



Quarterly Briefing for the City of Chehalis

July 8th , 2019

Randy Mueller, CEO

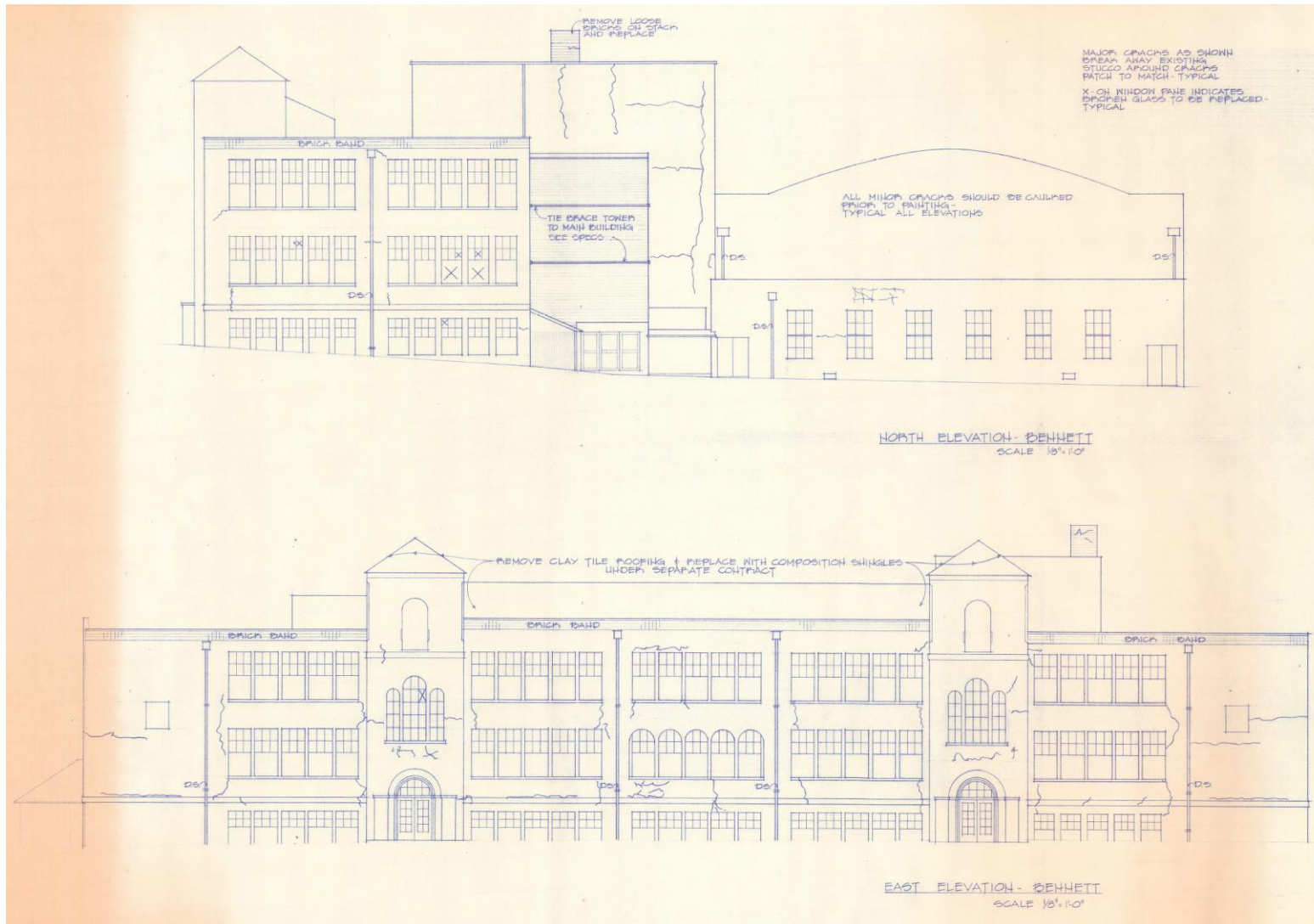
The Basics

- ▶ District boundaries: (N) Sunbirds to (S) Forest Road, (W) Curtis to (E) north of Onalaska
- ▶ 6 freeway interchanges (3 in Chehalis, one in unincorporated Chehalis UGA, 2 in Napavine)
- ▶ Population about 14,000, 55% are City of Chehalis residents
- ▶ Governed by 3 elected commissioners: Mark Giffey, Ken Kostick, and Mark Anders.

What's Going On?

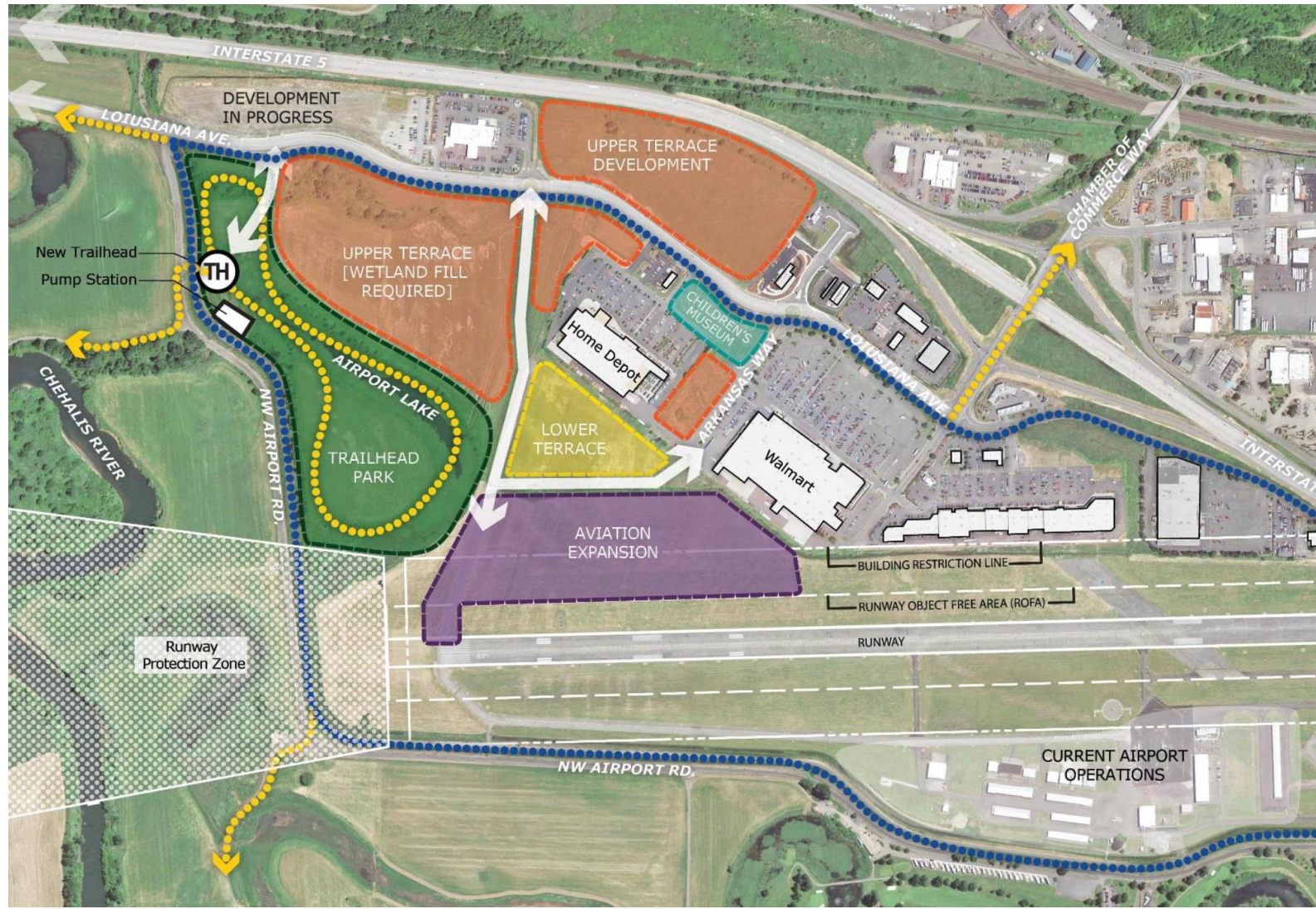
- ▶ **RE Bennett/Cascade redevelopment feasibility study**
- ▶ **Airport Partnership Planning**
- ▶ **New Building construction**
- ▶ **Rail Reload and Agricultural Service Center**
- ▶ **...and more**

RE Bennett/Cascade redevelopment feasibility study



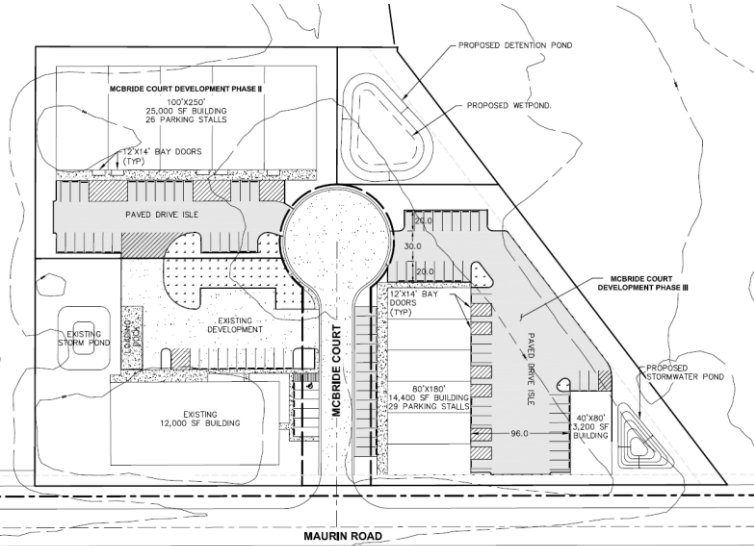
- The feasibility study is now complete
- Next step: the study will be provided to both the Port Commission and School Board, who funded it jointly.
- The Port Commission will consider options to present to School Board

Airport Partnership Planning



- We have been working with city staff on ideas to bring new commercial and aviation business to the airport.
- We have provided city staff with the first draft of an MOU that would establish how we'd do that work together.

New Building construction



- Staging starts late this month; construction starts early August.
- Construction should be complete end of November.
- Kaufman Construction
- \$1.85M project:
 - \$800K port
 - \$650K TransAlta
 - \$400K .09 funds
- 20,000 SF, available in increments of 2,500-7,500 SF.

Rail Reload and Agricultural Service Center



- Currently: Going out to bid on the first phase, the rail reload (spur).
 - \$800K project, funded by .09 funds.
- Next step: Partnering with NABC to design the Agricultural Service Center (rail reload, grain storage, bulk fertilizer distributor, and food hub warehouse).
 - \$38K grant, funded by USDA.

...and more

- **International clients** - the port is still in talks with 2 different groups of international clients about wood pellet manufacturing plants.
- **CCR&M** - The port and the steam train organization are still working towards a transfer of the rail line to the group.
- **CCRT** - The port is funding CCRT with \$40K this year to continue their work enhancing our city.
 - The port/CCRT partnership on building and operating Chehalis Coworks has been a success, our next step is to make it permanent.
 - CCRT programs of extra importance to the port in 2019:
 - Monthly Downtown Business Academy events
 - Blight removal, beautification, and redevelopment

The End. Questions?

Contact info:

Randy Mueller, EMPA, MRED

Chief Executive Officer

360.748.9365

rmueller@portofchehalis.com