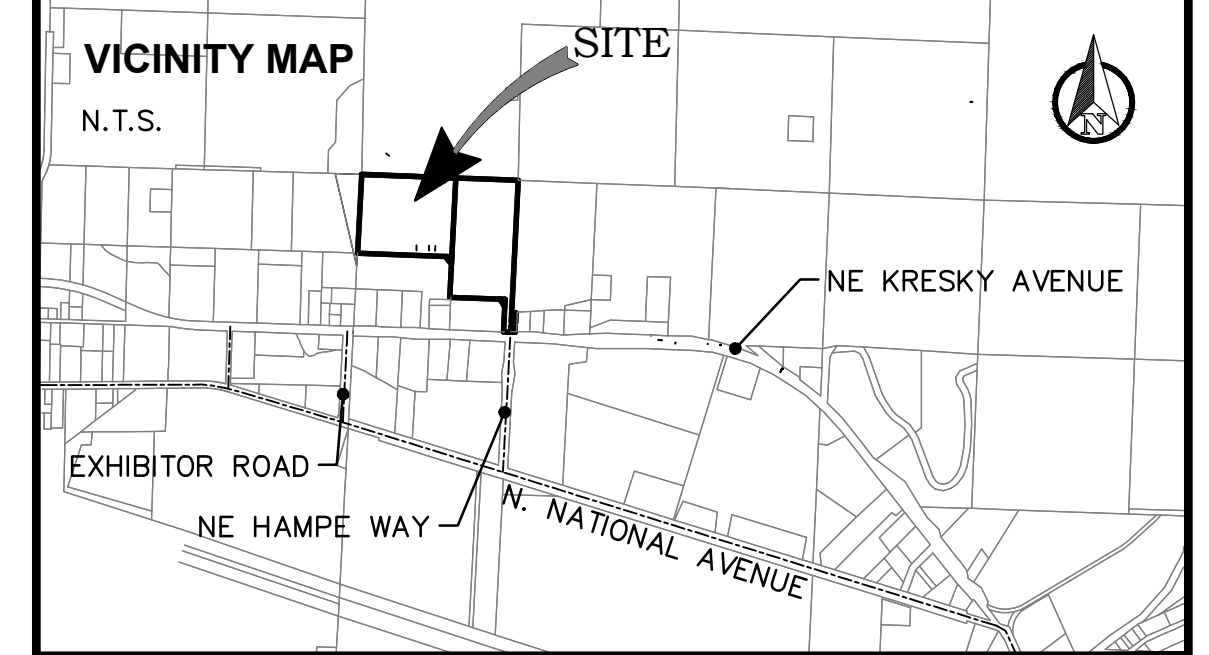
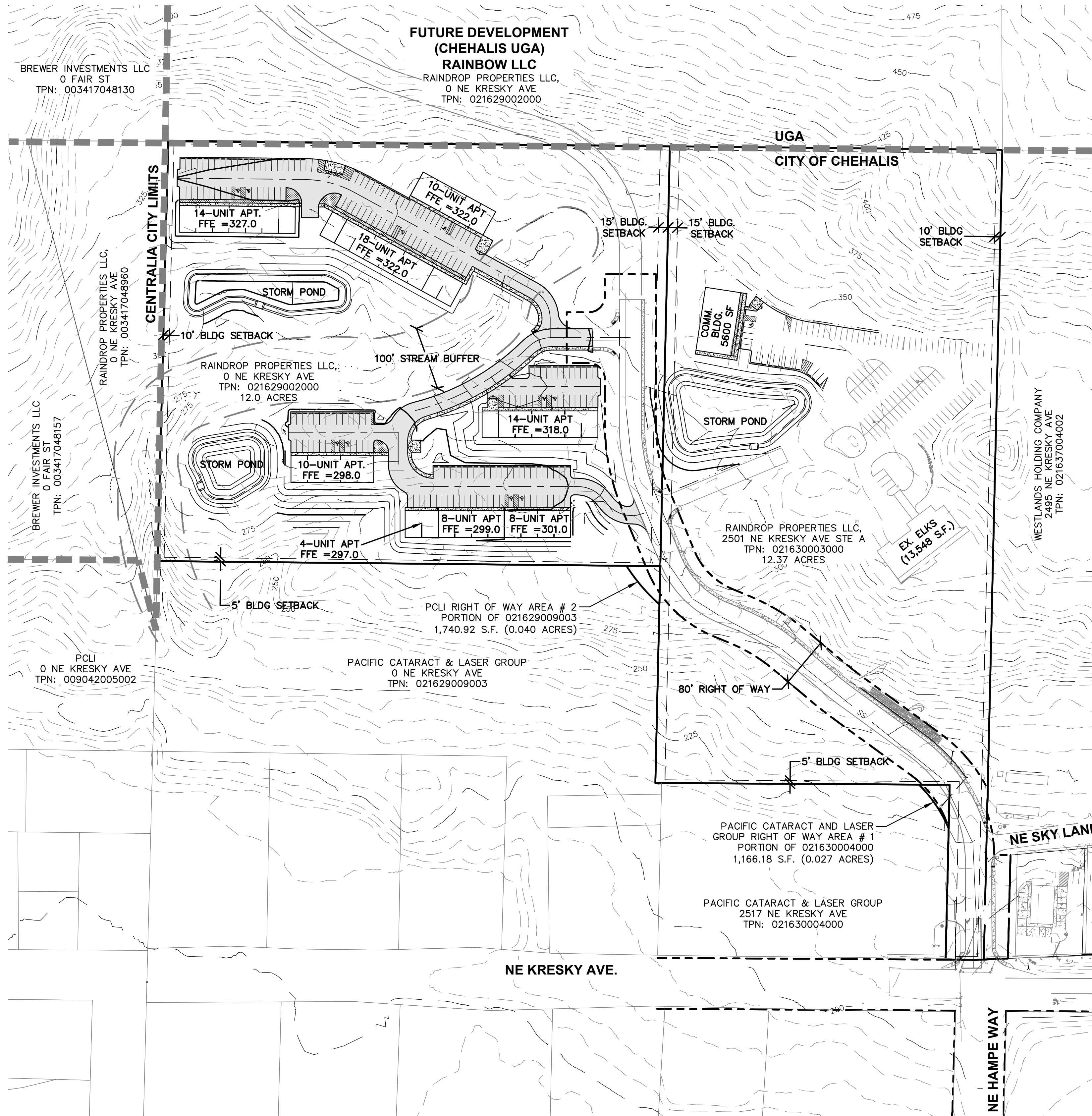
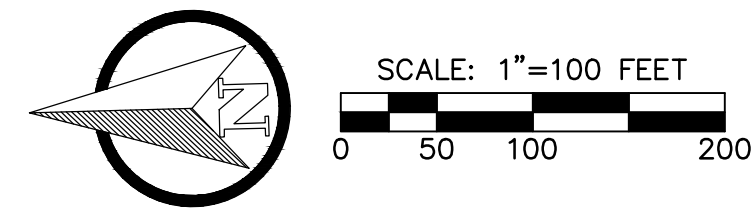


LEGEND		
EXISTING	PROPOSED	
— W —	— W —	WATER MAIN
— SS —	— SS —	SANITARY SEWER MAIN
— FM —	— FM —	FORCE MAIN
— SD —	— SD —	STORM MAIN
— RD —	— RD —	ROOF DRAIN
	— FD —	FOOTING DRAIN
— G —	— G —	GAS LINE
— UGP —	— UGP —	POWER LINE
— T —	— T —	TELEPHONE LINE
— TV —	— CATV —	CABLE TV LINE
— — — — —	— — — — —	ROADWAY CENTERLINE
— — — — —	— — — — —	RIGHT-OF-WAY LINE
— — — — —	— — — — —	EASEMENT LINE
— — — — —	— — — — —	FRONT/BACK OF CURB
— — — — —	— — — — —	EDGE OF GRAVEL SHOULDER
— EP —	— EP —	EDGE OF PAVEMENT
OBO	●	BLOWOFF ASSEMBLY
α	⊙	FIRE HYDRANT
W	⊕	GATE VALVE
	⊕	AIR RELIEF VALVE
	⊕	REDUCER
	⊕	THRUST BLOCKING
□ W	□	WATER METER BOX
⊙	⊙	WELL
	●	GUARD POST (BOLLARD)
	■	DCVA
□	□	CAP/PLUG
□	□	STORM DRAIN CATCH BASIN
○	○	STORM DRAIN MANHOLE
○	○	CLEANOUT
XXX	XXX	SURFACE FLOW DIRECTION
	—	SLOPE
	—	RIPRAP
418.85	●	SPOT ELEVATION
○	●	SEWER MANHOLE
○	●	SEWER CLEANOUT
	⊕	AIR RELEASE VALVE
	⊕	THRUST BLOCKING
	⊕	REDUCER
□	□	CAP/PLUG
⊕	⊕	GATE VALVE
□	□	JUNCTION BOX
□ SIG	□	SERVICE DISCONNECT
⊕	⊕	YARD/PEDESTRIAN LIGHT
⊕	⊕	STREET LIGHT
⊕	⊕	TRANSFORMER
⊕	⊕	POWER VAULT
⊕	⊕	POWER POLE
⊕	⊕	POLE ANCHOR
⊕	⊕	TELEPHONE VAULT
⊕	⊕	TELEPHONE RISER
⊕	⊕	GAS VALVE
⊕	⊕	GAS METER
⊕	⊕	BUSH/SHRUB
⊕	⊕	TREE (CONIFER)
⊕	⊕	TREE (DECIDUOUS)
⊕	⊕	SIGN
⊕	⊕	BARRICADE

HAMPE WAY MULTI-FAMILY DEVELOPMENT

SECTION 20, TOWNSHIP 14 NORTH, RANGE 02 WEST, W.M.
LEWIS COUNTY, WASHINGTON



PROJECT INFORMATION	
APPLICANT:	MR. JOHN BRAUN RAINDROP PROPERTIES LLC PO BOX 1224 CHEHALIS, WA 98532 360.748.0195
SURVEYOR:	BUTLER SURVEYING INC. 475 NW CHEHALIS AVE CHEHALIS, WA 98532 PH.: 360.748.8803
PARCEL NOS:	021630003000, 021629002000,
SITE ADDRESS:	2501 NE KRESKY AVE STE A CHEHALIS, WA 98532
ZONING:	CG-GENERAL COMMERCIAL / CITY
SITE AREA:	24.37 TOTAL ACRES
MULTI-FAMILY LOT COVERAGE:	BLDG: 46,954 SF (1.07 AC) = 8.9% SITE PAVING-ASPHALT: ~98,770 SF (2.26 AC) = 18.9%
RESIDENTIAL DENSITY:	86 UNITS; 6 NEW, 2-STORY MF 3.5 DU/AC
COMMERCIAL LOT COVERAGE:	BLDG: 1- EX. 13,548 SF COMM. 1- NEW 5,600 SF COMM. OFFICE 19,148 TOTAL SF (0.44 AC) = 3.5% EX. 52,050 SF (1.19 AC) = 9.6%
SITE PAVING-ASPHALT:	
PARKING STALLS:	195 TOTAL RESIDENTIAL STALLS (2.2 STALLS/DU) 111 TOTAL COMMERCIAL STALLS (5.8 STALLS/1000 SF)
BUILDING SETBACKS:	FRONT - 15' SIDE - 5' REAR - 10'
GRADING:	20,884± CY CUT, 33,500± CY FILL
SOILS:	27- BUCKPEAK SILT LOAM (30-65% SLOPES) 130- MELBOURNE LOAM (0-8% SLOPES) 131- MELBOURNE LOAM (8-15% SLOPES) 132- MELBOURNE LOAM (15-30% SLOPES)
SANITARY SEWER:	CITY OF CHEHALIS
WATER:	CITY OF CHEHALIS
FIRE DISTRICT:	CITY OF CHEHALIS

SHEET INDEX	
P0.1	OVERALL SITE PLAN AND PROJECT INFORMATION
P1.1	PRELIMINARY MULTI-FAMILY AND ELKS SITE PLAN
P1.2	PRELIMINARY GRADING AND DRAINAGE PLAN
P1.3	PRELIMINARY UTILITY PLAN

SURVEY INFORMATION	
LEGAL DESCRIPTION	
SECTION 20 TOWNSHIP14N RANGE 02W S 522.6' NE4 NE4 E NE KRESKY RD EX N 462.6' W 275'	
VERTICAL DATUM	
NAVD88	
BASIS OF BEARING	
ASSUMED	

GEOTECHNICAL NOTE
A GEOTECHNICAL REPORT WAS PREPARED FOR THIS PROJECT BY SOUTH SOUND GEOTECHNICAL CONSULTING. ALL RETAINING WALL CONSTRUCTION, EARTHWORK, SUB-GRADE PREPARATION, AND PAVING ACTIVITIES SHALL COMPLY WITH THE REPORTED RECOMMENDATIONS. SPECIFICATIONS. THE GEOTECH SHALL BE NOTIFIED OF ANY DEVELOPMENT CHANGES.

TOPOGRAPHIC NOTE
TOPOGRAPHIC INFORMATION DEPICTED HEREON WAS PROVIDED BY CANDU ENVIRONMENTAL LLC. TOPOGRAPHIC INFORMATION WAS NOT FIELD VERIFIED BY RB ENGINEERING.

NO.	DATE	REVISION
DESIGNED BY: RWB		
DRAWN BY: ALE		
CHECKED BY: RWB		
DATE: 08/25/2023		
SCALE: 1" = 100'		

HAMPE WAY MULTI-FAMILY DEVELOPMENT

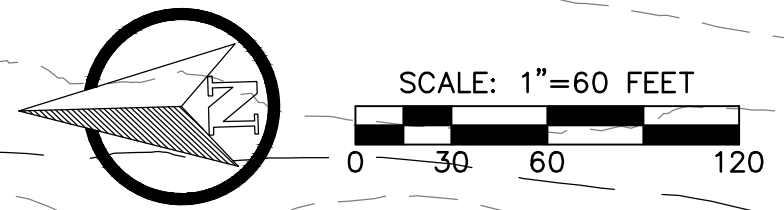
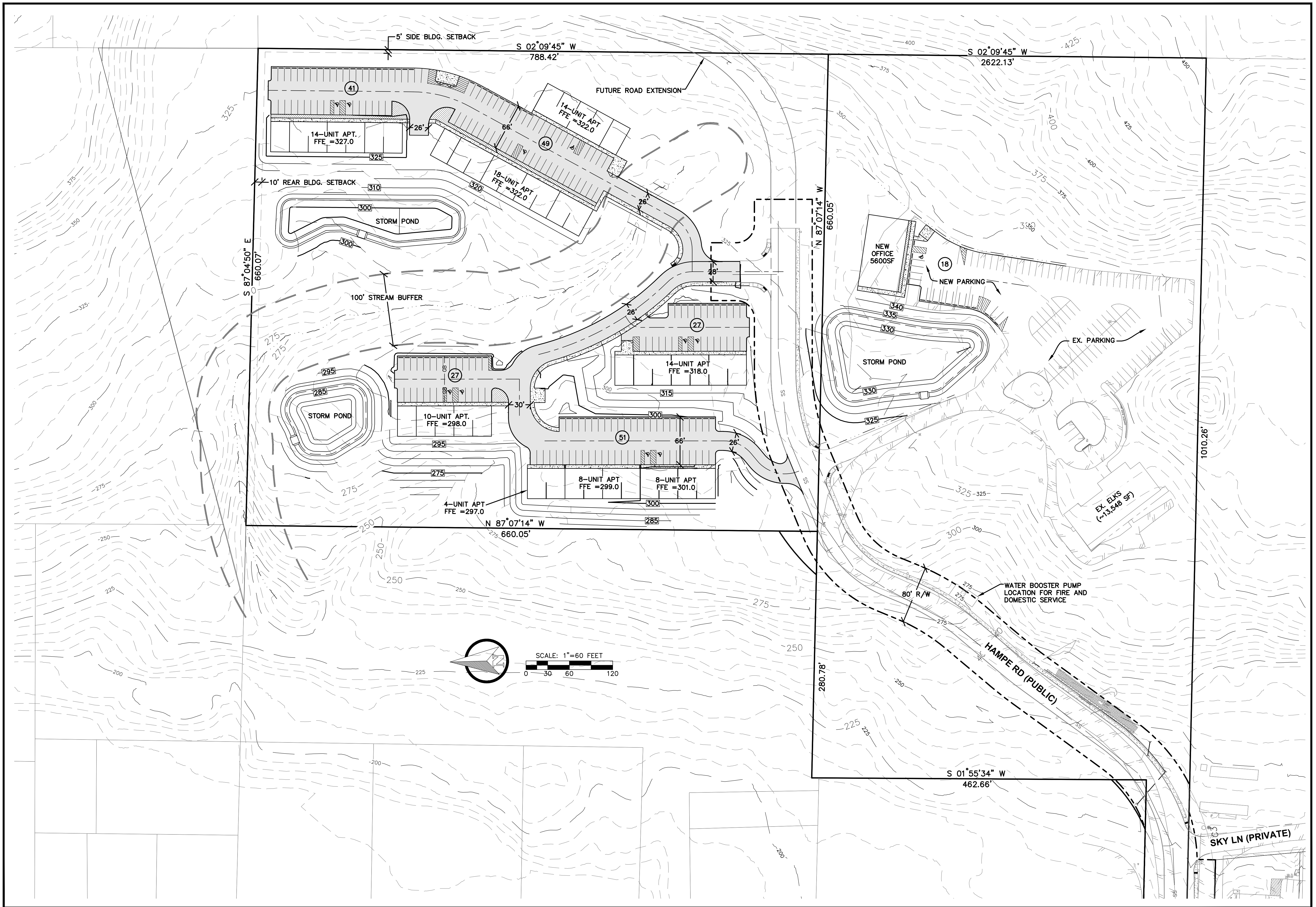
OVERALL SITE PLAN AND PROJECT INFORMATION

CITY OF CHEHALIS WA.

RB Engineering
DESIGN → PERMIT → MANAGE
OFF: (360) 740-8819
EMAIL: CnduPro@aol.com
P.O. Box 923
CHEHALIS, WA 98532

811 Know what's below. Call 811 before you dig.

JOB NUMBER: 19081
DRAWING NAME: 19081_PO.1_COVR
P0.1
1 OF 4



NO.	DATE	REVISION
DESIGNED BY: <u>RWB</u>		
DRAWN BY: <u>ALE</u>		
CHECKED BY: <u>RWB</u>		
DATE: <u>08/25/2023</u>		
SCALE: <u>1" = 60'</u>		

HAMPE WAY MULTI-FAMILY DEVELOPMENT

PRELIMINARY MULTI-FAMILY AND ELKS SITE PLAN

ROBERT W. BAUMANN
 REGISTERED PROFESSIONAL ENGINEER

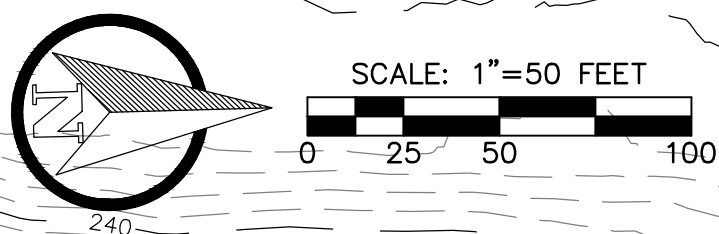
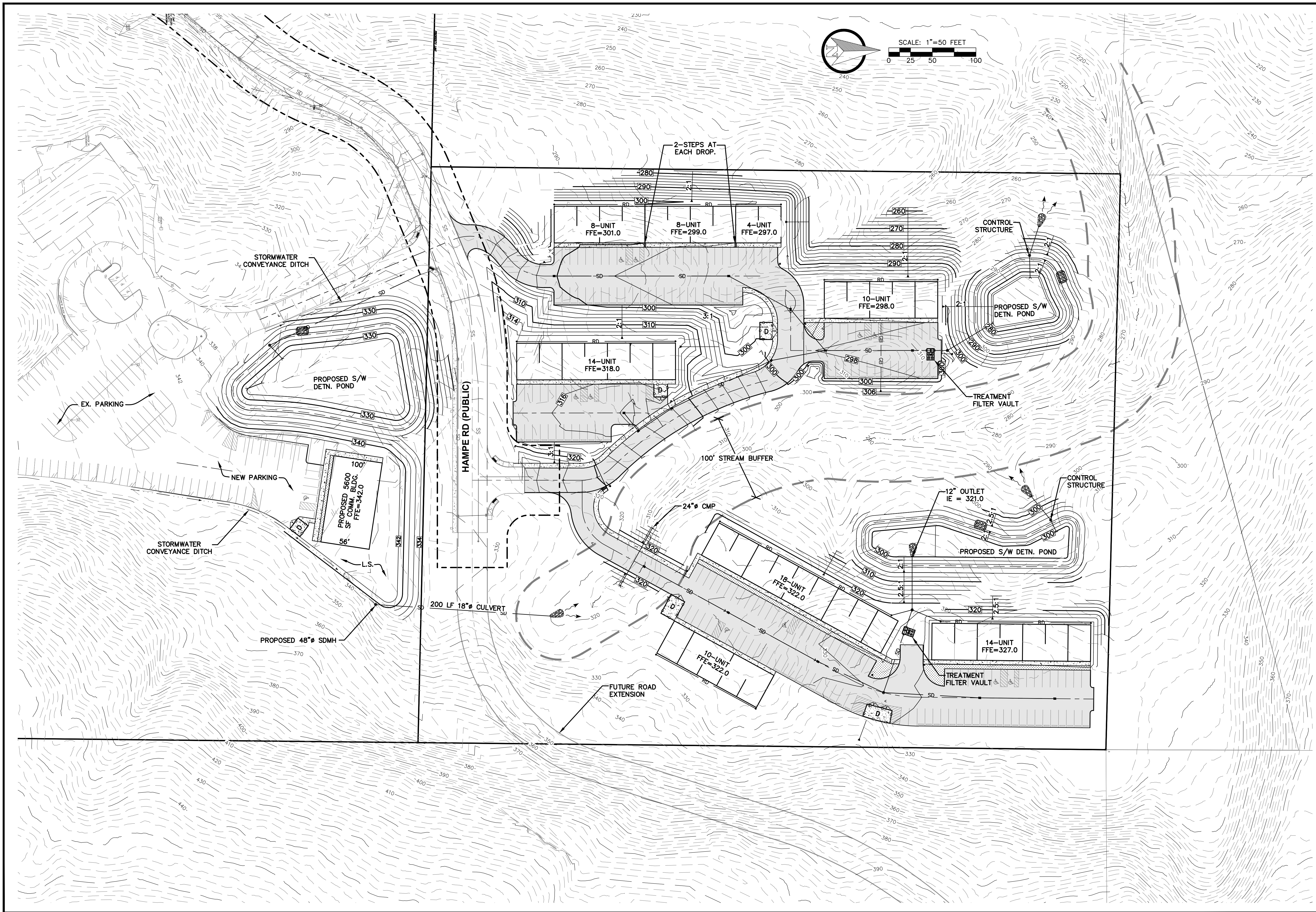
RB Engineering
 DESIGN → PERMIT → MANAGE

P.O. Box 923
 CHEHALIS, WA 98532

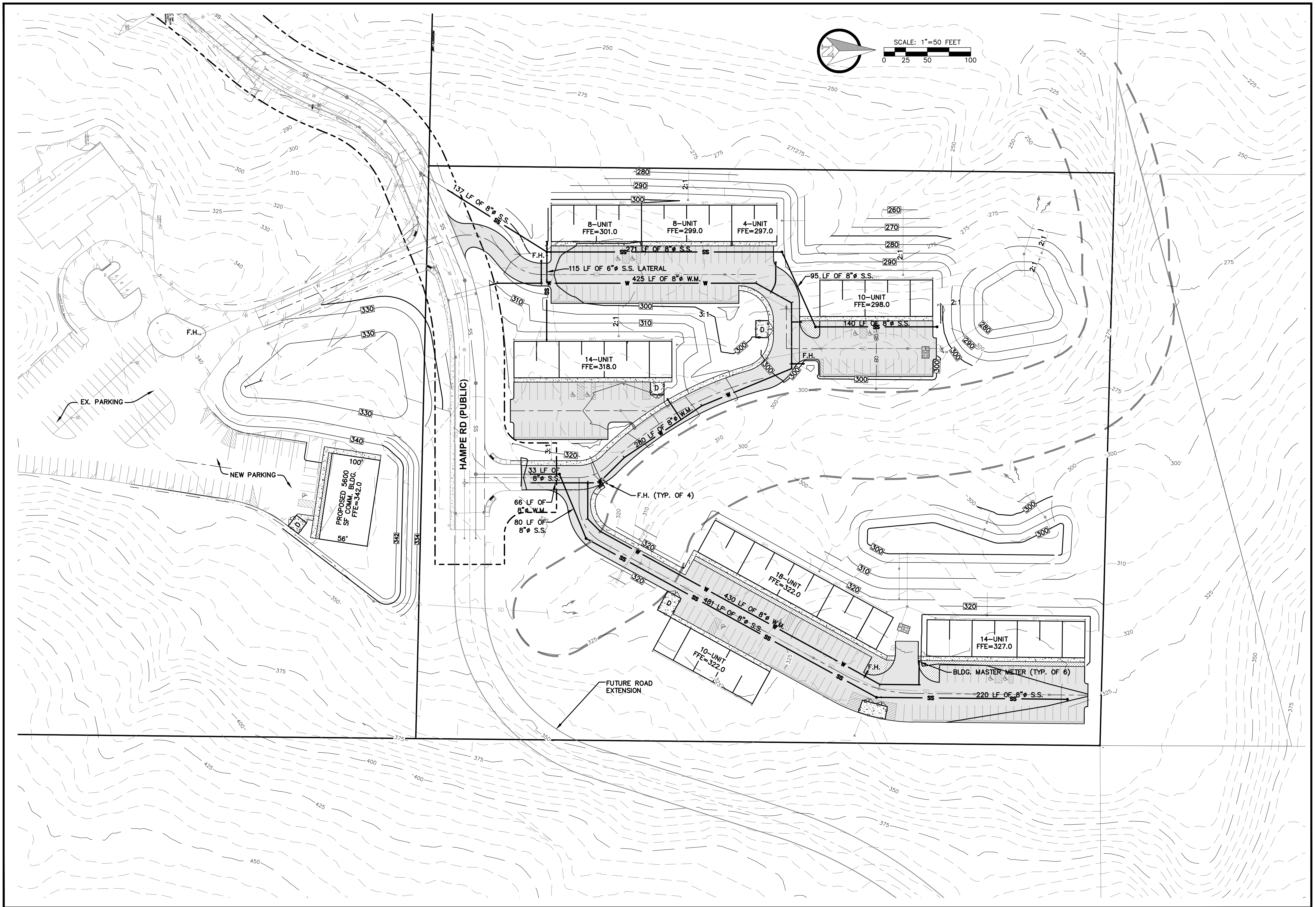
OFF: (360) 740-8819
 EMAIL: info@rbengineers.com

811 Know what's below. Call 811 before you dig.

JOB NUMBER: 19081
 DRAWING NAME: 19081_P1.1_PSTPL
P1.1
 2 OF 4



NO.	DATE	DESIGNED BY: <u>RWB</u>	DRAWN BY: <u>ALE</u>	CHECKED BY: <u>RWB</u>	DATE: <u>08/25/2023</u>	SCALE: <u>1" = 50'</u>
HAMPE WAY MULTI-FAMILY DEVELOPMENT CITY OF CHEHALIS WA.						
PRELIMINARY GRADING AND DRAINAGE PLAN						
RB Engineering DESIGN → PERMIT → MANAGE P.O. Box 923 CHEHALIS, WA 98532 OFF: (360) 740-8819 EMAIL: info@rbengineering.com						
811 Know what's below. Call 811 before you dig.						
JOB NUMBER: 19081 DRAWING NAME: 19081_P1.2_PGDPL P1.2 3 OF 4						

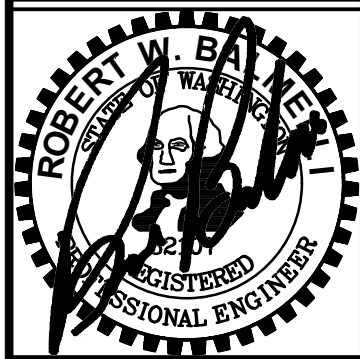


NO.	DATE	REVISION

DESIGNED BY: RWB
 DRAWN BY: ALE
 CHECKED BY: RWB
 DATE: 08/25/2023
 SCALE: 1" = 50'

**HAMPE WAY MULTI-FAMILY
DEVELOPMENT**
 CITY OF CHEHALIS WA.

PRELIMINARY UTILITY PLAN



RB Engineering
 DESIGN → PERMIT → MANAGE
 P.O. Box 923
 CHEHALIS, WA 98532
 OFF: (360) 740-8819
 EMAIL: info@rbengineers.com

811 Know what's below. Call 811 before you dig.
 JOB NUMBER
 19081
 DRAWING NAME
 19081_P1.3_PUTPL
P1.3
 4 OF 4