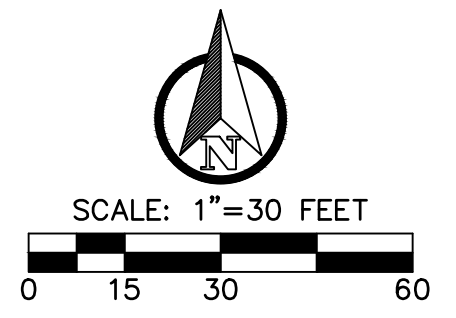
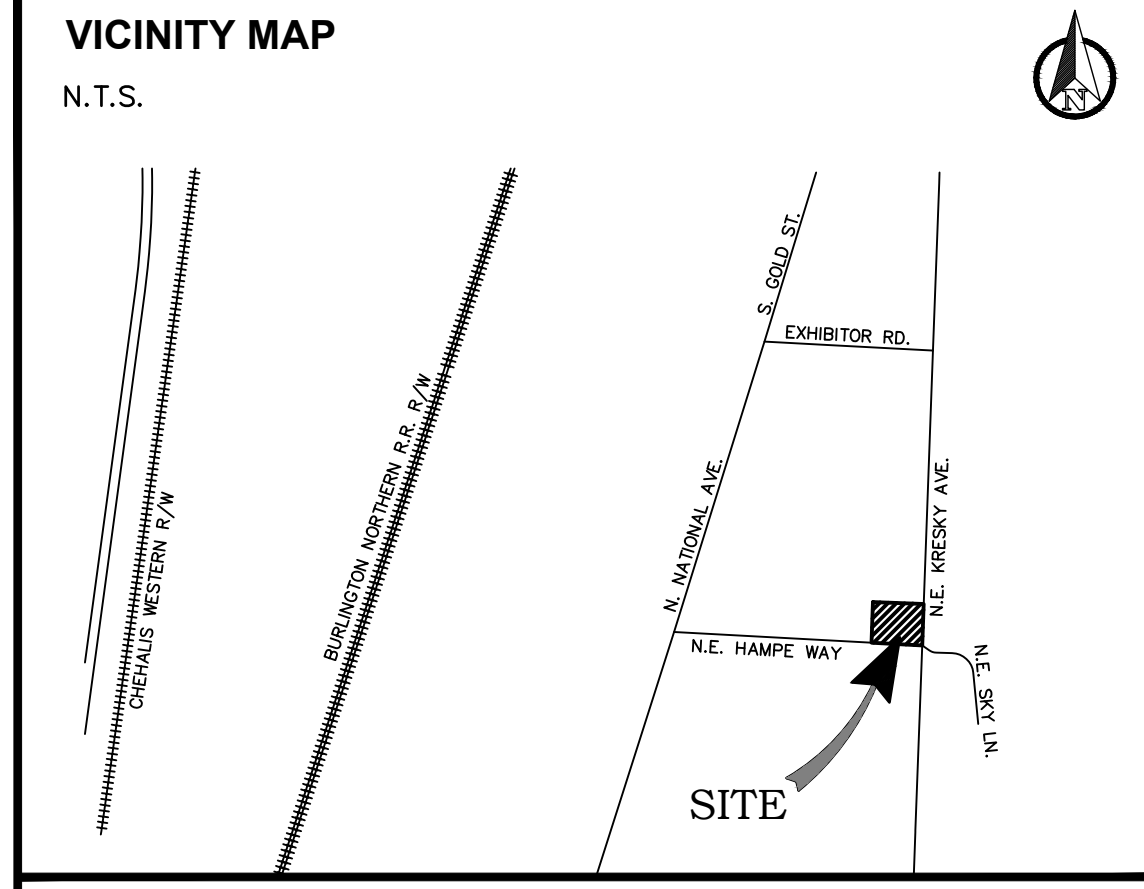
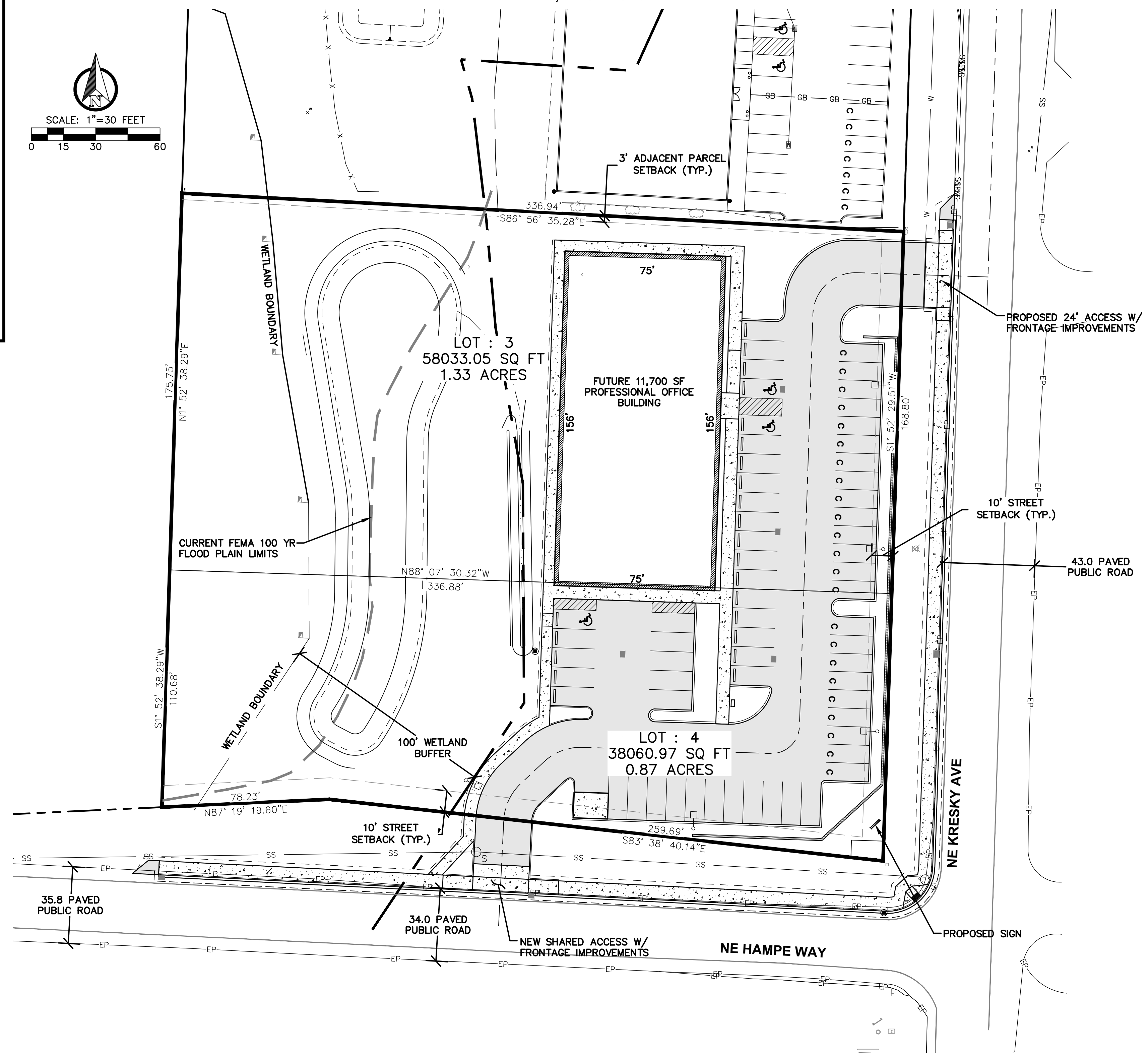


LEGEND		
EXISTING	PROPOSED	
W	W	WATER MAIN
SS	SS	SANITARY SEWER MAIN
FM	FM	FORCE MAIN
SD	SD	STORM MAIN
RD	RD	ROOF DRAIN
		FOOTING DRAIN
G	G	GAS LINE
UGP	UGP	POWER LINE
T	T	TELEPHONE LINE
TV	CATV	CABLE TV LINE
		ROADWAY CENTERLINE
		RIGHT-OF-WAY LINE
		EASEMENT LINE
		FRONT/BACK OF CURB
		EDGE OF GRAVEL SHOULDER
EP		EDGE OF PAVEMENT



WILSON COMMERCIAL BUILDING

SECTION 20, TOWNSHIP 14 NORTH, RANGE 02 WEST, W.M.
CHEHALIS, WASHINGTON



PROJECT INFORMATION	
APPLICANT:	WILSON REAL ESTATE LLC KIM & AARON WILSON (360) 269-3982
SURVEYOR:	FORESIGHT SURVEYING, INC. 1583 N. NATIONAL AVE. #2210 CHEHALIS, WA 98532 (360) 748-4000
PARCEL NOS:	005606039-001, 002
SITE ADDRESS:	2510 & 2520 KRESKY AVE NE CENTRALIA, WA 98531
ZONING:	CG - GENERAL COMMERCIAL
SITE AREA:	2.21
GRADING:	±4310 CY CUT ±3715 CY FILL
NET GRADING:	±595 CY CUT
SOIL TYPE (RATING):	MELBOURNE LOAM
SANITARY SEWER:	CITY OF CHEHALIS (HAMPE WAY)
WATER:	CITY OF CHEHALIS (KRESKY)
FIRE DISTRICT:	LEWIS COUNTY
PROPOSED BLDG:	11,700 GROSS FLOOR AREA
PARKING REQ'D:	5 STALLS / 1000 SF (CMC 17.78.020 B080/B191) 59 STALLS
PARKING PROPOSED:	62 STALLS 36 STANDARD 23 COMPACT 3 ACCESSIBLE

SHEET INDEX	
CO.1	PRELIMINARY SITE PLAN
CO.2	EXISTING CONDITIONS PLAN
C1.1	PRELIMINARY GRADING AND DRAINAGE PLAN
C1.2	PRELIMINARY UTILITY PLAN
L1.0	PRELIMINARY LANDSCAPE PLANTING PLAN

SURVEY INFORMATION	
LEGAL DESCRIPTION	SECTION 20 TOWNSHIP 14N RANGE 02W PT NW NE LT 2 SP
VERTICAL DATUM	NGVD 29
BASIS OF BEARING	RECORD OF SURVEY, V18/P84

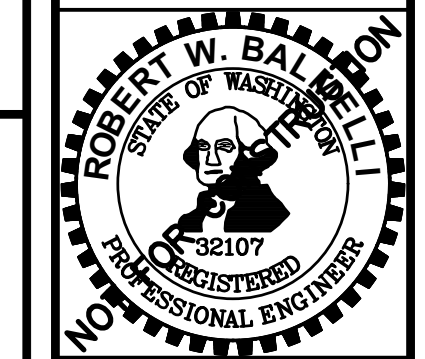
TOPOGRAPHIC NOTE
TOPOGRAPHIC INFORMATION DEPICTED HEREON WAS PROVIDED BY FORESIGHT SURVEYING, INC. TOPOGRAPHIC INFORMATION WAS NOT FIELD VERIFIED BY RB ENGINEERING.

NO.	DATE	REVISION

DESIGNED BY:	ARP
DRAWN BY:	ARP
CHECKED BY:	RWB
DATE:	10/06/2022
SCALE:	1" = 30'

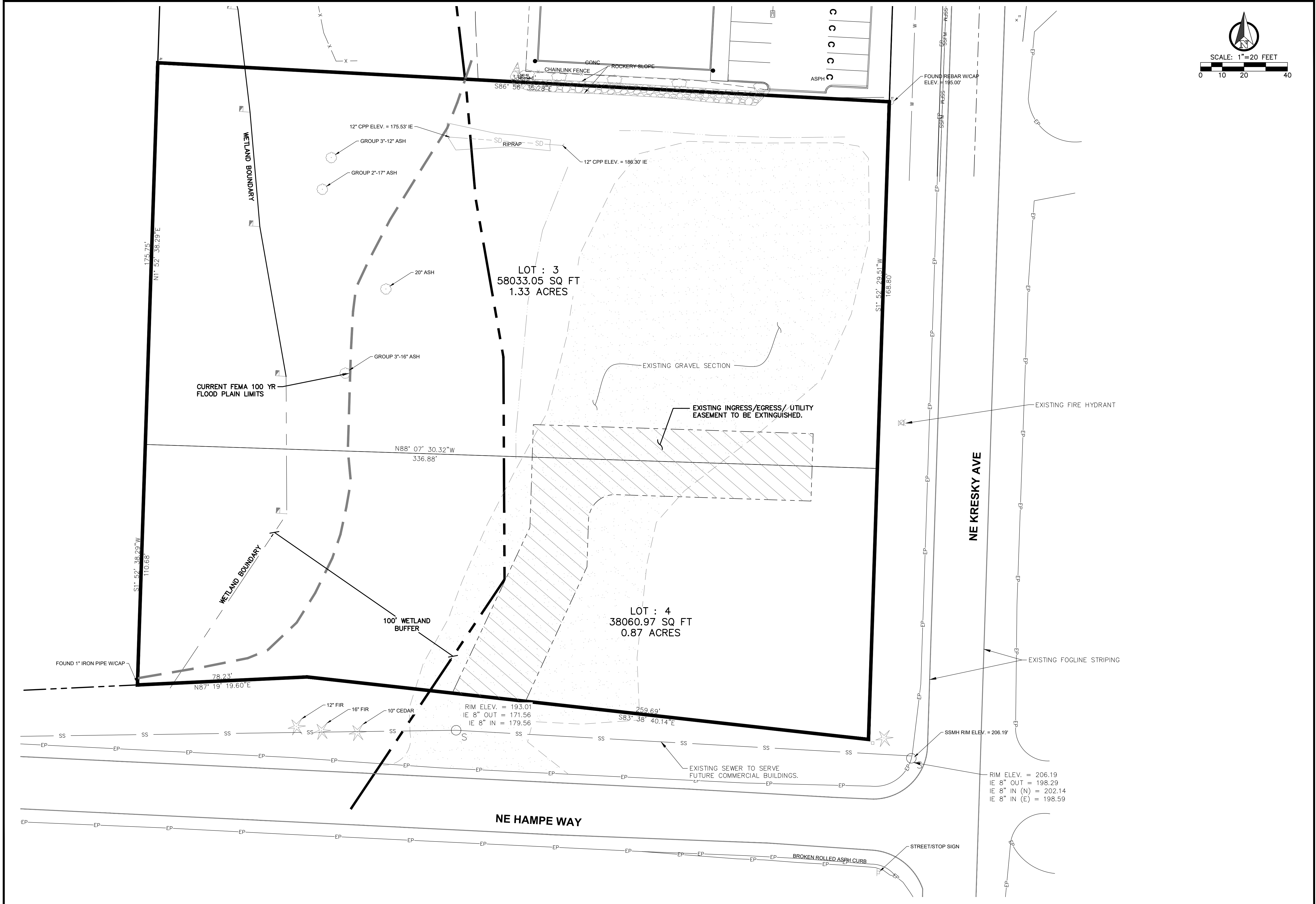
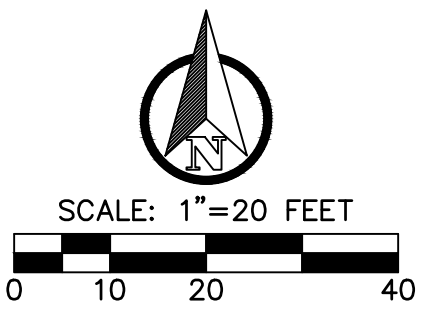
WILSON COMMERCIAL BUILDING
CITY OF CHEHALIS WA.

PRELIMINARY SITE PLAN



RB Engineering
CIVIL ENGINEERING - LAND PLANNING - UTILITIES
P.O. Box 923
CHEHALIS, WA 98532
OFF: (360) 748-8019
FAX: (360) 748-8912

JOB NUMBER	21116
DRAWING NAME	21116_CO.1_PSP1
C0.1	1 OF 5

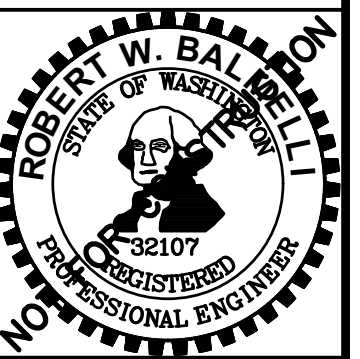


NO.	DATE	REVISION

DESIGNED BY: ARP
 DRAWN BY: ARP
 CHECKED BY: RWB
 DATE: 10/06/2022
 SCALE: 1" = 20'

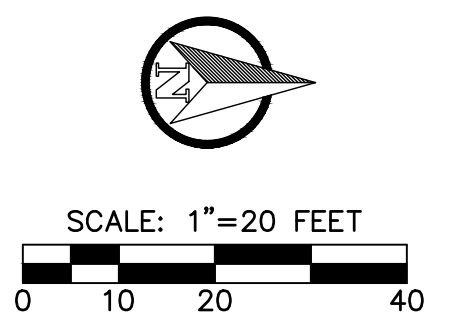
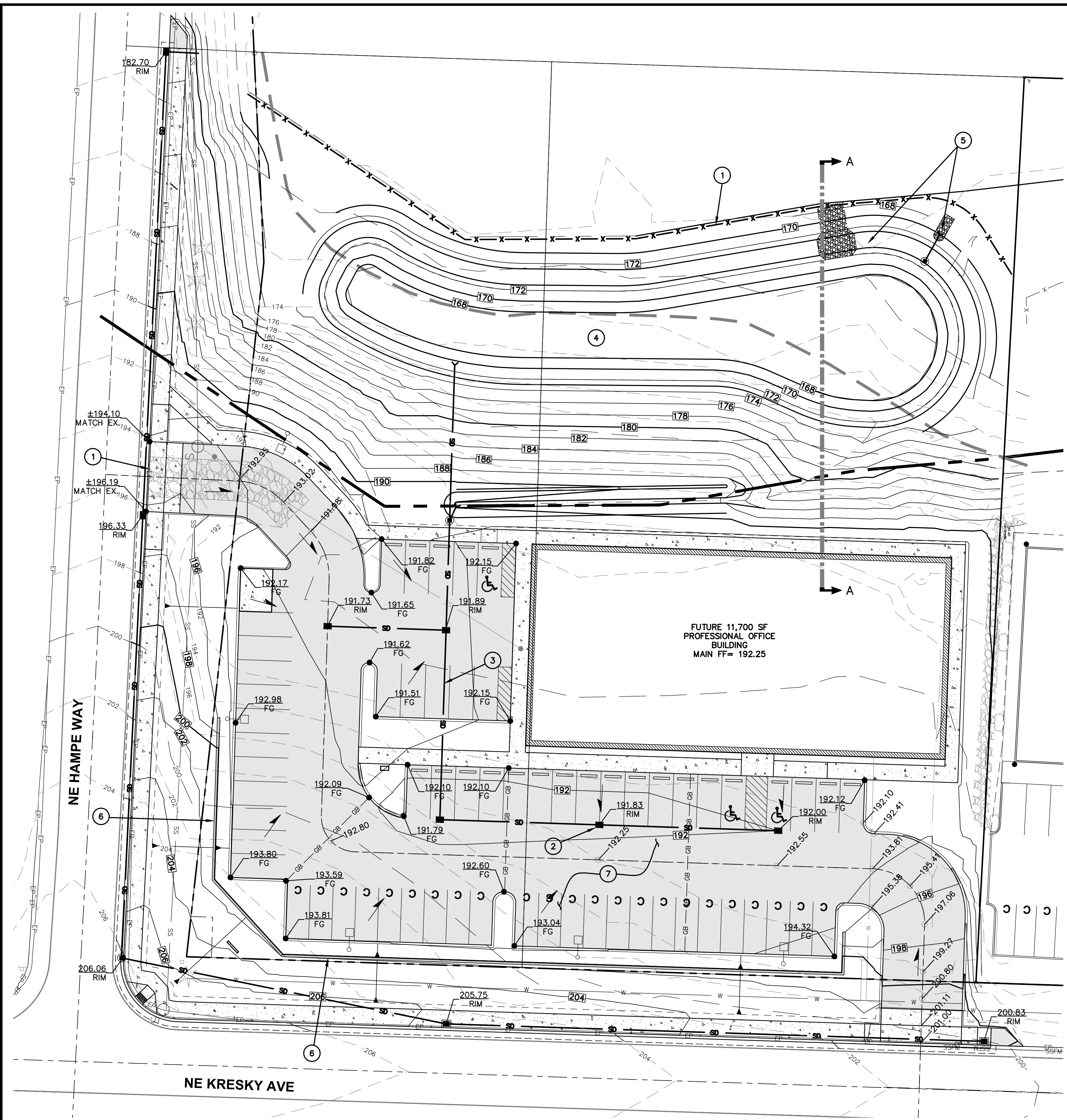
WILSON COMMERCIAL BUILDING
 CITY OF CHEHALIS WA.

EXISTING CONDITIONS PLAN



RB Engineering
 CIVIL ENGINEERING - LAND PLANNING - UTILITIES
 OFF: (360) 740-8010
 FAX: (360) 740-8912
 P.O. Box 923
 CHEHALIS, WA 98522

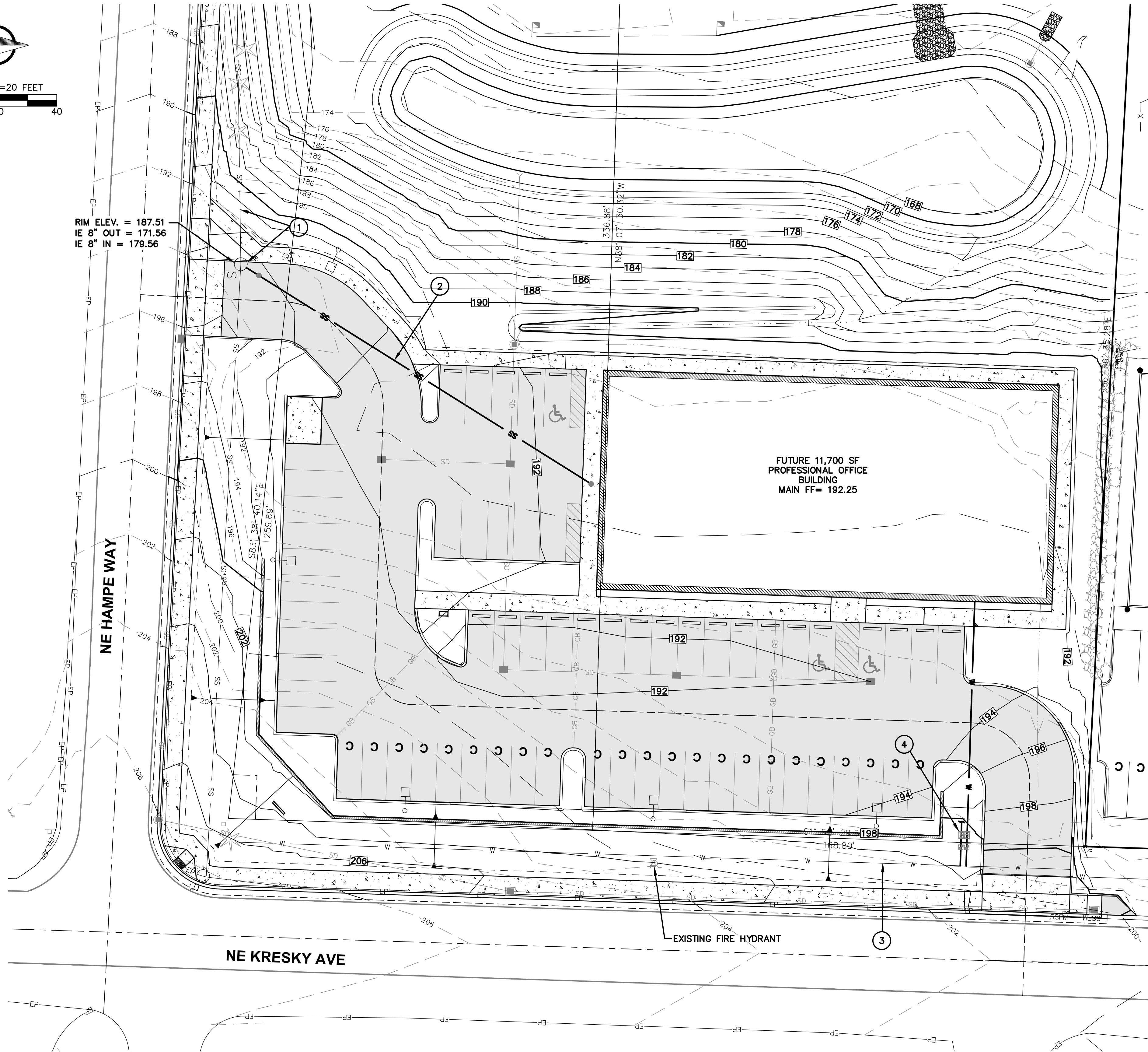
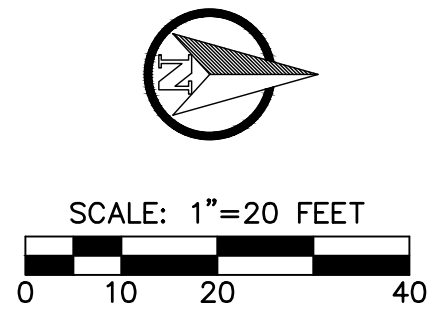
JOB NUMBER: 21116
 DRAWING NAME: 21116_CO.2_EXPL
C0.2
 2 OF 5



PRELIMINARY GRADING AND DRAINAGE NOTES:

- 1 PROPOSED TEMPORARY EROSION AND SEDIMENTATION CONTROL MEASURES SHALL BE PROVIDED PRIOR TO CONSTRUCTION.
- 2 PROPOSED CATCH BASINS FOR PARKING LOT AND BUILDING RUNOFF.
- 3 PROPOSED STORMWATER CONVEYANCE PIPE.
- 4 PROPOSED STORMWATER DETENTION POND
- 5 PROPOSED OVERFLOW STRUCTURE AND PIPE TO DISCHARGE INTO EXISTING HYDRIC SOILS.
- 6 PROPOSED 4-FT TALL RETAINING WALL.
- 7 ALL REMOVED DEBRIS AND MATERIAL RESULTING FROM CUT AREA TO BE DISPOSED OF AT AN APPROVED LOCATION.

NO.	DATE	REVISION	
DESIGNED BY:	DRAWN BY:	CHECKED BY:	DATE: 10/06/2022 SCALE: 1" = 20'
ARP	ARP	RWB	
WILSON COMMERCIAL BUILDING			CITY OF CHEHALIS WA.
PRELIMINARY GRADING AND DRAINAGE PLAN			
RB Engineering CIVIL ENGINEERING - LAND PLANNING - UTILITIES P.O. Box 923 CHEHALIS, WA 98532 OFF: (360) 746-8819 FAX: (360) 746-8812			
JOB NUMBER: 21116 DRAWING NAME: 21116_C1.1_PGDPL C1.1 3 OF 5			



RIM ELEV. = 187.51
 IE 8" OUT = 171.56
 IE 8" IN = 179.56

FUTURE 11,700 SF
 PROFESSIONAL OFFICE
 BUILDING
 MAIN FF= 192.25

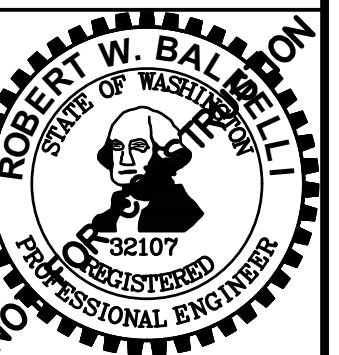
NE KRESKY AVE

NE HAMPE WAY

EXISTING FIRE HYDRANT

PRELIMINARY UTILITY NOTES:

- ① EXISTING SEWER TO SERVE FUTURE COMMERCIAL BUILDINGS.
- ② PROPOSED GRAVITY SEWER LATERAL FOR LOT 1.
- ③ EXISTING 8"Ø WATER MAIN TO SERVE COMMERCIAL BUILDINGS.
- ④ PROPOSED DOMESTIC AND IRRIGATION METER LOCATIONS FOR LOT 1.



RB Engineering
 CIVIL ENGINEERING - LAND PLANNING - UTILITIES
 P.O. Box 923
 CHEHALIS, WA 98532
 OFF: (360) 740-8019
 FAX: (360) 740-8812

JOB NUMBER
 21116
 DRAWING NAME
 21116_C1.2_PUPL

C1.2
 4 OF 5

DESIGNED BY: ARP	NO. DATE	REVISION
DRAWN BY: ARP		
CHECKED BY: RWB		
DATE: 10/06/2022		
SCALE: 1" = 20'		
WILSON COMMERCIAL BUILDING		WA.
PRELIMINARY UTILITY PLAN		
CITY OF CHEHALIS		