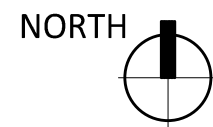




PARTIAL LEGAL DESCRIPTION:
 Section 32 Township 14N Range 02W
 LOTS 3 THRU 11 & W 17' LOT 12 BLK
 E MAIN ST ADD

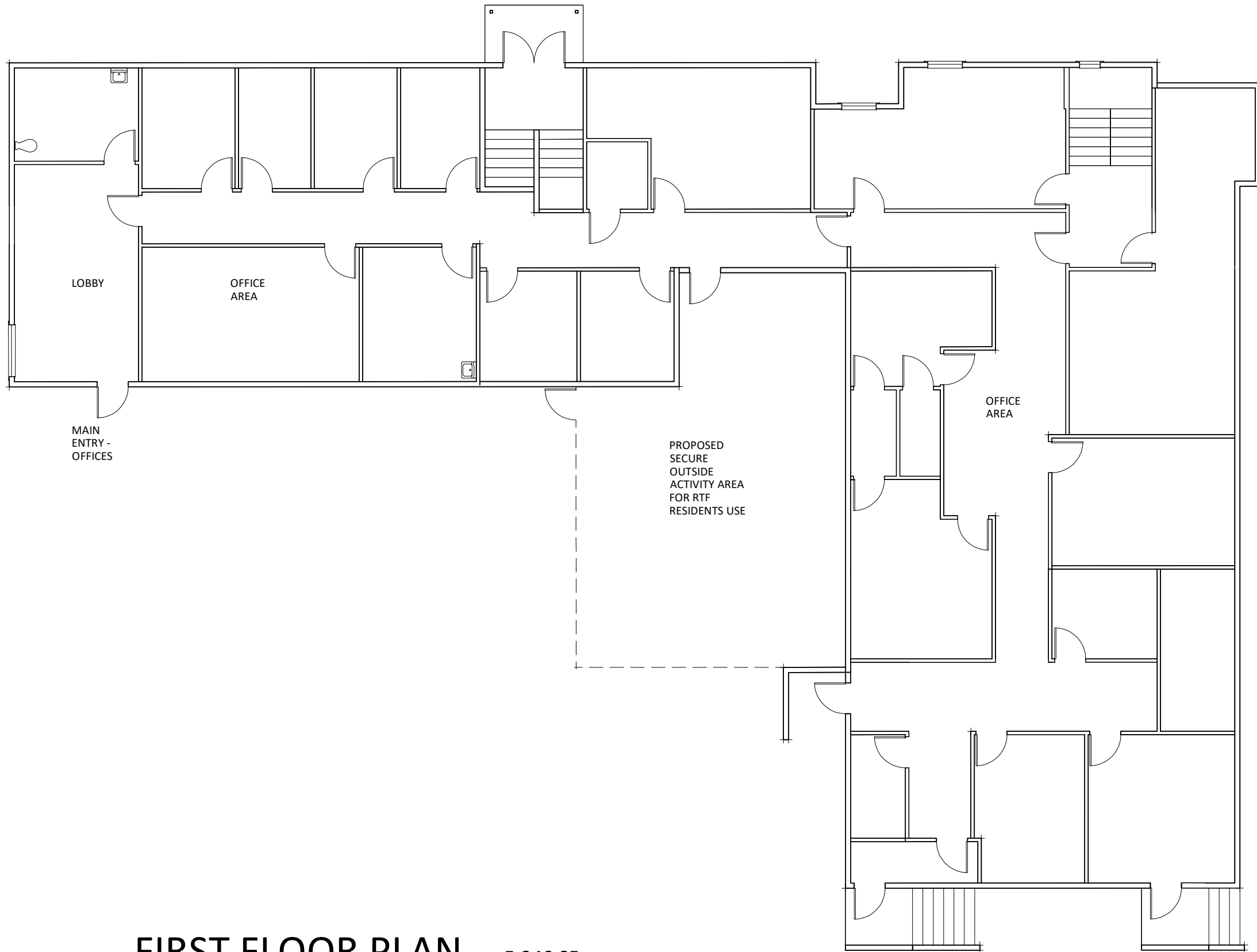



SITE VICINITY

10,880 SF (EXISTING BUILDING)

**CASCADE COMMUNITY HEALTHCARE - CASCADE SUD
 135 WEST MAIN STREET, CHEHALIS**

Ron Wright & Associates/Architects, P.S.
 2003 Western Avenue, Suite 610
 Seattle, Washington 98121
 (206) 728-4248

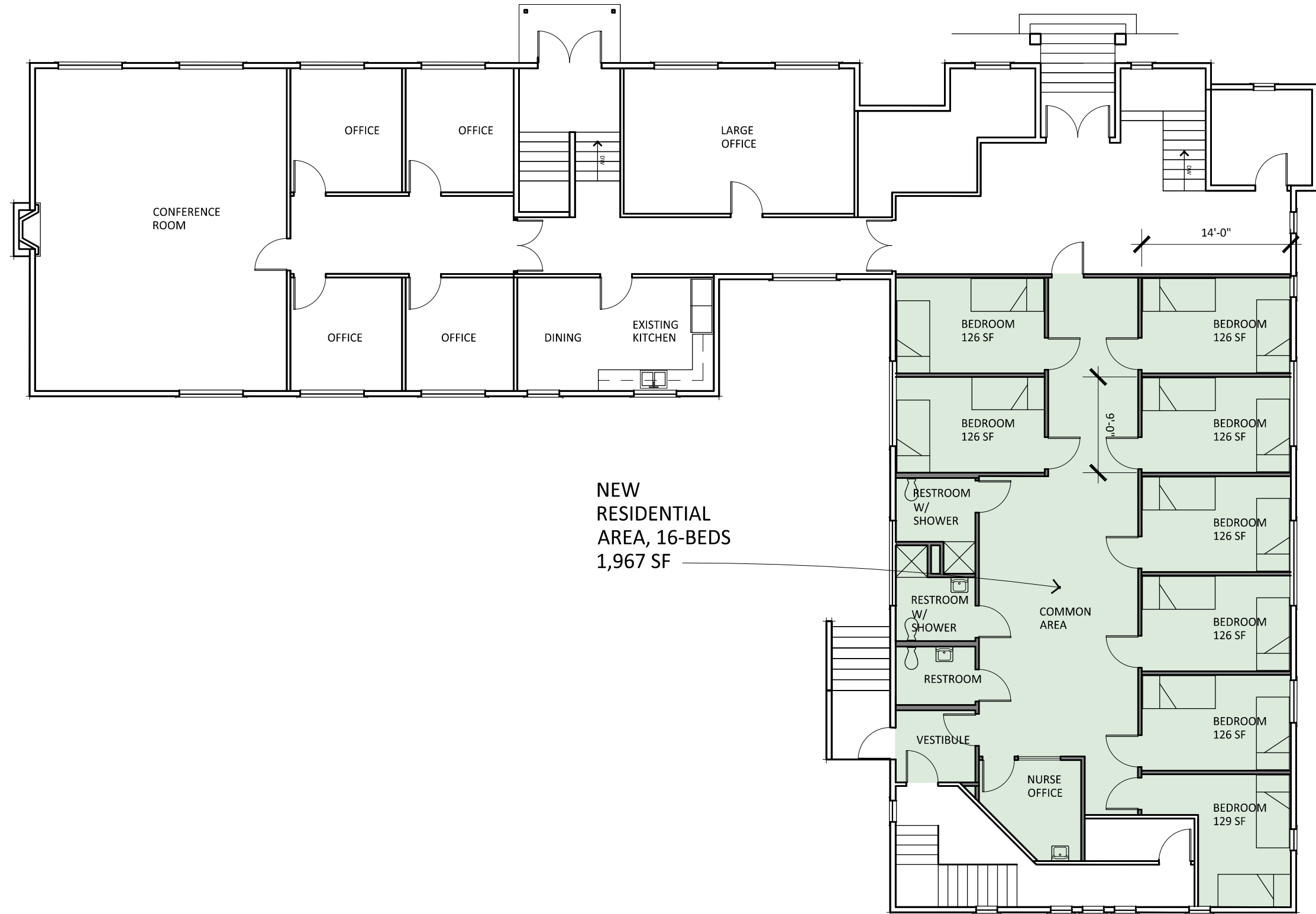


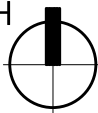
NORTH  3/32" = 1'-0"

FIRST FLOOR PLAN 5,340 SF

CASCADE COMMUNITY HEALTHCARE
135 WEST MAIN STREET, CHEHALIS

Ron Wright & Associates/Architects, P.S.
2003 Western Avenue, Suite 610
Seattle, Washington 98121
(206) 728-4248

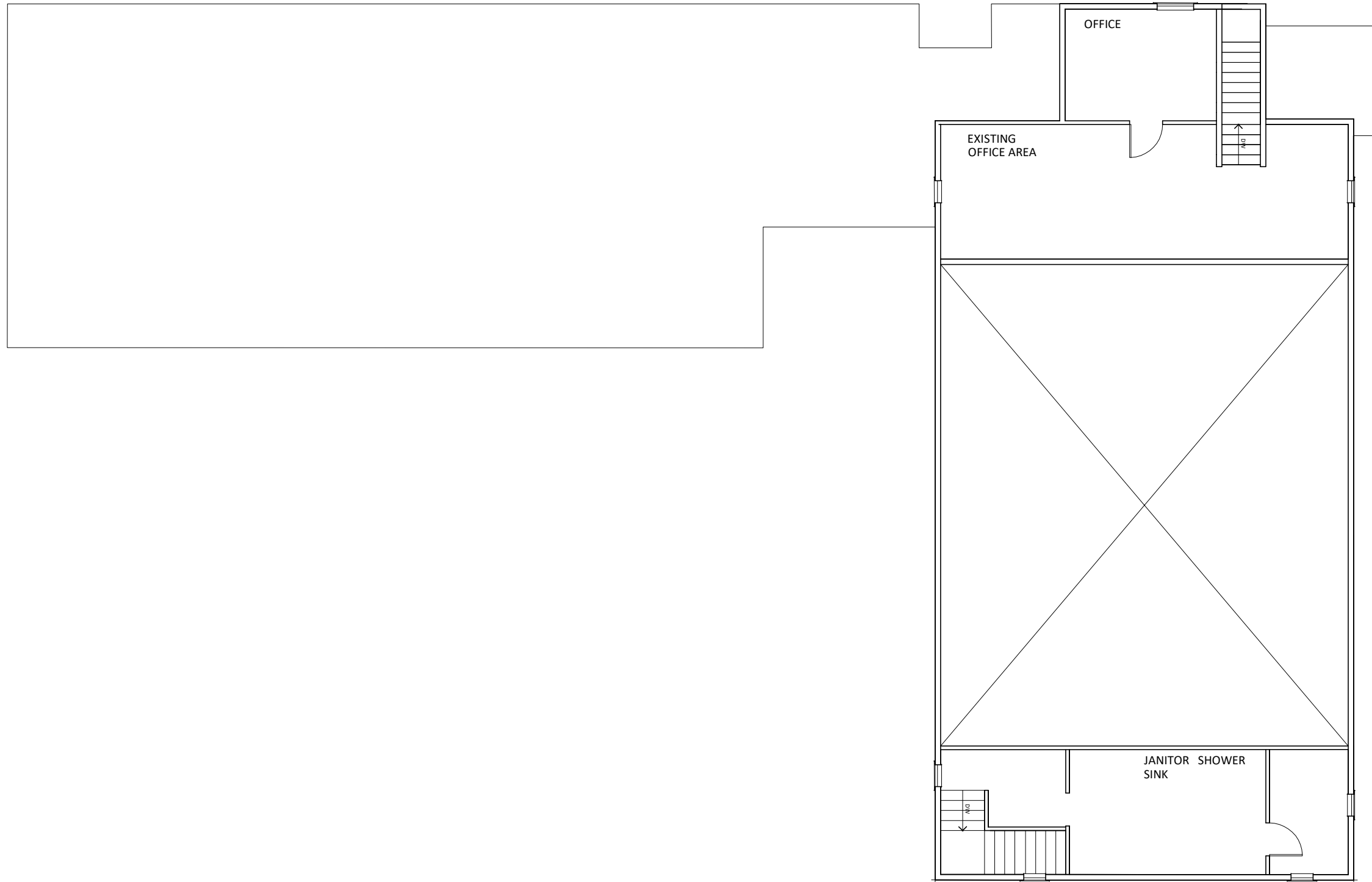



NORTH  3/32" = 1'-0"

SECOND FLOOR PLAN 5,340 SF

CASCADE COMMUNITY HEALTHCARE
135 WEST MAIN STREET, CHEHALIS

Ron Wright & Associates/Architects, P.S.
 2003 Western Avenue, Suite 610
 Seattle, Washington 98121
 (206) 728-4248



NORTH  3/32" = 1'-0"

THIRD FLOOR PLAN 950 SF
CASCADE COMMUNITY HEALTHCARE
135 WEST MAIN STREET, CHEHALIS

Ron Wright & Associates/Architects, P.S.
2003 Western Avenue, Suite 610
Seattle, Washington 98121
(206) 728-4248