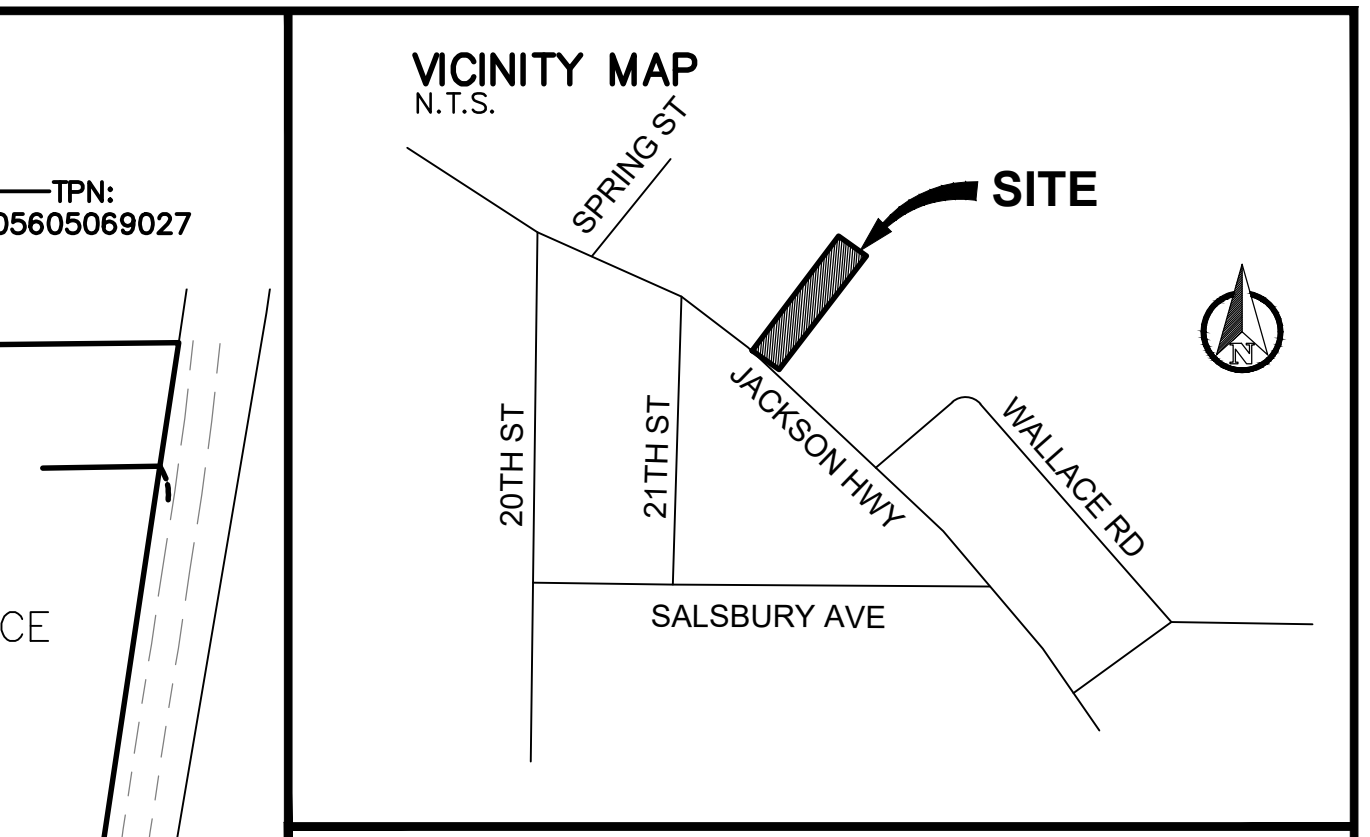
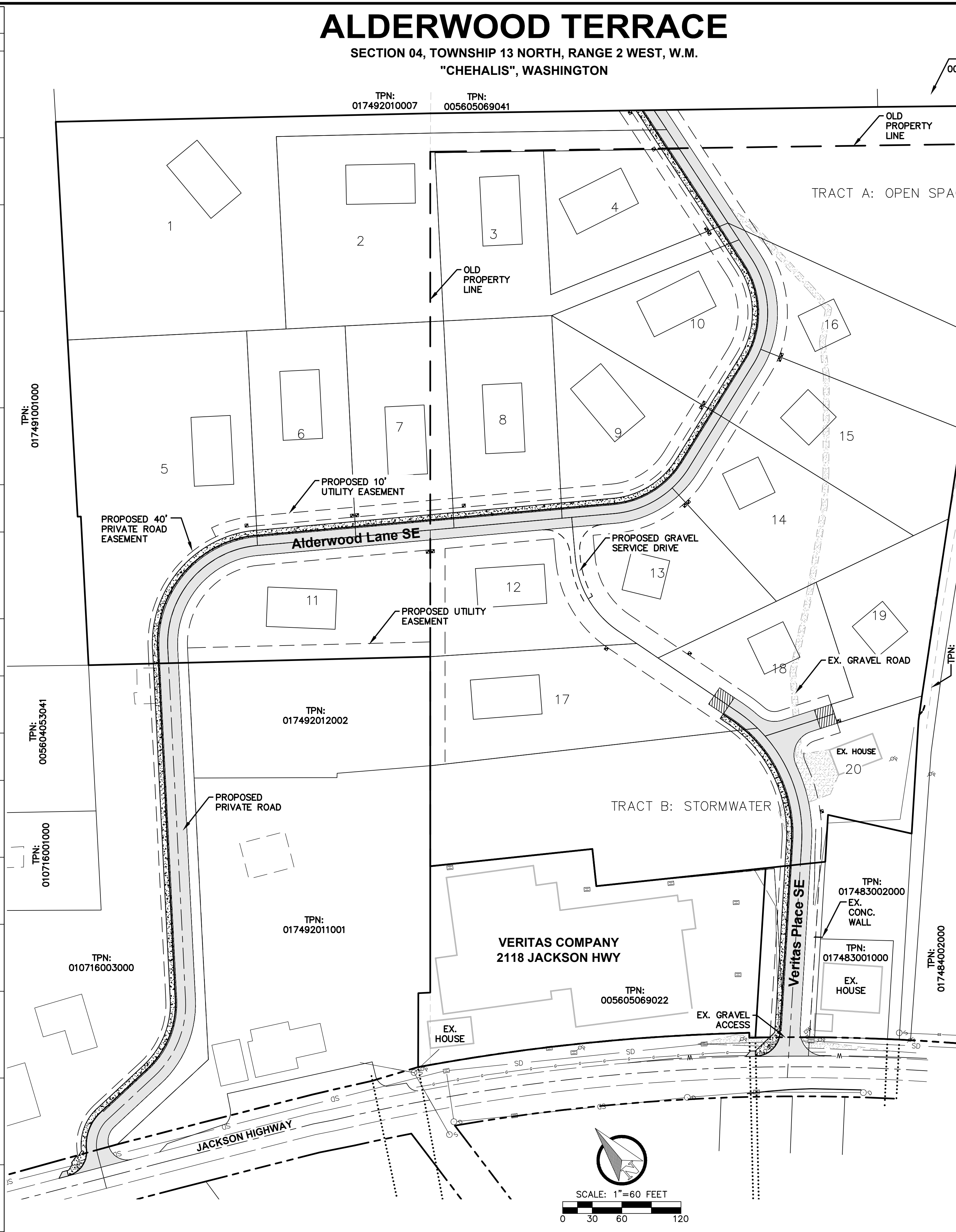


ALDERWOOD TERRACE

SECTION 04, TOWNSHIP 13 NORTH, RANGE 2 WEST, W.M.
"CHEHALIS", WASHINGTON

PARCEL SUMMARY TABLE				
LOT #	AREA (AC)	PERIMETER (FT)	SEGMENT BEARING	SEGMENT LENGTH
TRACT B: STORMWATER	1.04	±998	S43° 21' 30.59"W	21.90
			N56° 13' 34.55"E	208.19
			N33° 46' 25.45"E	37.87
			N56° 13' 34.55"W	165.45
			N39° 50' 52.22"E	101.88
			S36° 42' 47.68"E	334.32
TRACT A: OPEN SPACE	1.20	±1012	S3° 37' 44.69"E	11.09
			S20° 55' 26.11"W	117.47
			S50° 53' 18.88"E	362.00
			S48° 25' 37.27"W	236.28
			N25° 41' 13.54"W	276.45
			N6° 35' 20.76"E	89.53
1	1.29	±1666	N6° 35' 20.76"E	23.70
			N6° 35' 20.76"E	23.70
			S51° 26' 36.60"E	222.85
			S31° 26' 36.60"E	157.55
			S50° 58' 50.82"E	226.64
			S6° 35' 20.76"W	23.70
2	0.82	±1195	N50° 58' 50.82"W	236.22
			N50° 58' 50.82"W	138.13
			S36° 57' 30.86"W	110.07
			S36° 57' 30.86"W	170.94
			N53° 02' 29.14"W	100.00
			N53° 02' 29.14"W	60.00
3	0.52	±956	N36° 57' 30.86"E	195.42
			S51° 26' 29.17"E	160.06
			S50° 58' 50.82"E	236.22
			S6° 35' 20.76"W	20.39
			N72° 10' 32.36"W	204.94
			N53° 02' 29.14"W	110.00
4	0.43	±568	N36° 57' 30.86"E	170.94
			S50° 58' 50.82"E	110.07
			S36° 57' 30.86"W	145.81
			S72° 10' 32.36"E	194.03
			S50° 58' 50.82"E	138.13
			S6° 35' 20.76"W	89.53
5	1.16	±983	N72° 10' 32.36"W	194.03
			N36° 57' 30.86"E	145.81
			S36° 57' 30.86"W	153.18
			S80° 50' 23.68"W	153.18
			S36° 57' 27.72"W	14.69
			N51° 33' 51.60"W	81.24
6	0.50	±632	N36° 52' 57.09"E	150.92
			N51° 27' 01.42"W	3.28
			N36° 38' 35.16"E	179.53
			S53° 02' 29.14"E	181.78
			S53° 02' 29.14"E	60.00
			S36° 57' 30.86"W	214.11
7	0.49	±624	N55° 16' 40.36"W	100.08
			N36° 57' 30.86"E	218.01
			S53° 02' 29.14"E	40.00
			S36° 57' 30.86"W	210.20
			N55° 16' 40.36"W	24.19
			N55° 16' 40.36"W	75.89
8	0.53	±636	N36° 57' 30.86"E	214.11
			S53° 02' 29.14"E	100.00
			S36° 57' 30.86"W	205.91
			N55° 16' 40.36"W	110.08
			N36° 57' 30.86"E	210.20
			S53° 02' 29.14"E	110.00
9	0.49	±613	S71° 41' 14.20"W	61.20
			S79° 28' 35.27"W	27.19
			N74° 00' 22.01"W	65.37
			N55° 16' 40.36"W	43.36
			N55° 16' 40.36"W	9.86
			N36° 57' 30.86"E	205.91
10	0.47	±603	S19° 25' 36.52"E	199.74
			S72° 10' 32.36"E	204.94
			S6° 35' 20.76"W	23.09
			S34° 03' 00.17"W	95.86
			S66° 35' 56.89"W	17.76
			S71° 41' 14.20"W	61.20
11	0.69	±738	N19° 25' 36.52"E	199.74
			S39° 50' 52.22"W	128.50
			N51° 33' 51.60"W	265.54
			N36° 57' 27.72"E	14.69
			N80° 50' 23.68"E	153.18
			S55° 16' 40.36"E	100.08
12	0.48	±635	S55° 16' 40.36"E	75.89
			S34° 43' 19.64"W	41.63
			S9° 19' 35.63"E	88.65
			S16° 04' 08.38"E	22.53
			N53° 48' 36.84"W	209.92
			N39° 50' 52.22"E	128.50
13	0.48	±577	S55° 16' 40.36"E	24.19
			S55° 16' 40.36"E	110.08
			S55° 16' 40.36"E	9.86
			S74° 00' 22.01"E	65.37
			S2° 44' 03.66"E	156.20
			N75° 44' 01.97"W	133.07
14	0.49	±629	N16° 04' 08.38"W	26.14
			N16° 04' 08.38"W	22.53
			N9° 19' 35.63"E	88.65
			N34° 43' 19.64"E	41.63
			S55° 16' 40.36"E	43.36
			N71° 41' 14.20"E	61.20



PROJECT INFORMATION	
APPLICANT/OWNER:	CHAD O'MEALY 2188 JACKSON HIGHWAY CHEHALIS, WA 98532 (800) 766-4885
PARCEL NO:	005605069022, -9024, 017492009000
SITE ADDRESS:	2118 & 2124 JACKSON HIGHWAY CHEHALIS, WA 98532
ZONING:	R-UGA/R-2 (MIN LOT SIZE = 6,000SF/5,000SF)
SITE AREA:	15.19 AC. TOTAL
PARKING:	137 STALLS
SANITARY SEWER:	CITY OF CHEHALIS
WATER:	CITY OF CHEHALIS
FIRE DISTRICT:	FIRE DISTRICT 6

SURVEY INFORMATION	
LEGAL DESCRIPTION:	SECTION 04 TOWNSHIP 13N RANGE 02W PT E. MILLS DLC PT NW4 NE4 LY NWLY JACKSON HWY
VERTICAL DATUM:	ASSUMED
BASIS OF BEARING:	WASHINGTON STATE PLANE, SOUTH ZONE (NAD 83/11) AS PER TIES TO WSDOT CONTROL POINTS CHE-18 AND CHE-06. HELD THE PUBLISHED COORDINATE AND COMBINED SCALE FACTOR AT POINT CHE-18 TO SCALE DISTANCES FROM GRID TO GROUND.

PARCEL SUMMARY TABLE				
LDT #	AREA (AC)	PERIMETER (FT)	SEGMENT BEARING	SEGMENT LENGTH
15	0.54	±660	N66° 35' 56.89"E	17.76
			S28° 29' 20.43"E	219.76
			S48° 23' 23.07"W	91.96
			N75° 44' 01.97"W	39.44
			N18° 18' 45.80"W	229.86
16	0.52	±731	N71° 41' 14.20"E	61.20
			S25° 41' 13.54"E	276.45
			S48° 23' 23.07"W	95.81
			N28° 29' 20.43"W	219.76
			N34° 03' 00.17"E	95.86
17	0.65	±805	N6° 35' 20.76"E	23.09
			N6° 35' 20.76"E	20.39
			S16° 04' 08.38"E	96.69
			S10° 54' 29.69"E	27.02
			N56° 42' 47.68"W	334.32
18	0.38	±542	N39° 50' 52.22"E	110.71
			S53° 48' 36.84"E	209.92
			S16° 04' 08.38"E	26.14
			S21° 58' 52.41"W	122.68
			N68° 01' 07.59"W	23.42
19	0.38	±587	S21° 58' 52.41"W	10.00
			N68° 01' 07.59"W	73.76
			N3° 37' 44.69"W	11.09
			N10° 54' 29.69"W	27.02
			N16° 04' 08.38"W	96.69
20	0.35	±614	S75° 44' 01.97"E	133.07
			S75° 44' 01.97"E	44.76
			S48° 23' 23.07"W	181.63
			N68° 01' 07.59"W	90.24
			N21° 58' 52.41"E	10.00

REVISION	NO.	DATE
DESIGNED BY: ARP	DRAWN BY: ARP	CHECKED BY: RWB
DATE: 11/23/21	SCALE: 1" = 60'	
ALDERWOOD TERRACE		
PRELIMINARY PLAT MAP		
RB Engineering DESIGN → PERMIT → MANAGE OFF: (360) 746-8919 EMAIL: info@rbengineering.com P.O. Box 923 CHEHALIS, WA 98532		
811 Know what's below. Call 811 before you dig.		
JOB NUMBER 17025		
DRAWING NAME 17025_C01_PLAT		
P0.1 1 OF 1		