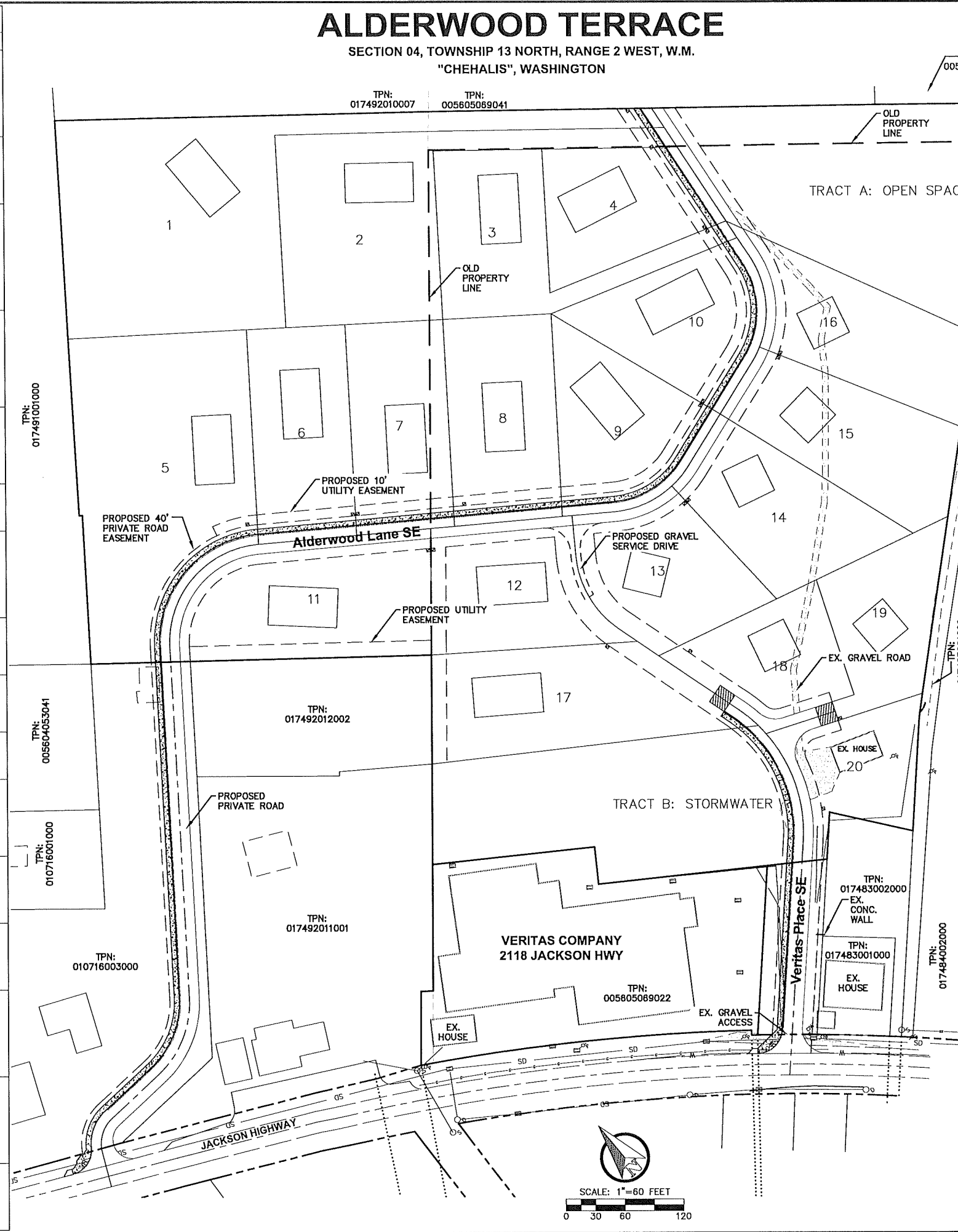


PARCEL SUMMARY TABLE				
LOT #	AREA (AC)	PERIMETER (FT)	SEGMENT BEARING	SEGMENT LENGTH
TRACT B: STORMWATER	1.04	±998	S43° 21' 30.59"W	21.90
			N56° 13' 34.55"W	208.19
			N33° 46' 25.45"E	37.87
			N56° 13' 34.55"W	165.45
			N39° 50' 52.22"E	101.88
			S56° 42' 47.68"E	334.32
TRACT A: OPEN SPACE	1.20	±1012	S3° 37' 44.69"E	11.09
			S20° 55' 26.11"W	117.47
			S50° 53' 18.88"E	362.00
			S48° 25' 37.27"W	236.28
			N25° 41' 13.54"W	276.45
			N6° 35' 20.76"E	89.53
1	1.29	±1666	N6° 35' 20.76"E	23.70
			N6° 35' 20.76"E	23.70
			N51° 26' 36.60"E	222.85
			S51° 26' 36.60"E	157.65
			S50° 58' 50.82"E	226.64
			S6° 35' 20.76"W	23.70
			N50° 58' 50.82"W	236.22
			N51° 26' 29.17"W	160.06
			S36° 57' 30.86"W	195.42
			N53° 02' 29.14"W	40.00
2	0.82	±1195	N53° 02' 29.14"W	181.78
			N36° 42' 12.63"E	221.67
			S6° 35' 20.76"W	23.70
			N50° 58' 50.82"W	138.13
			N50° 58' 50.82"W	110.07
			S36° 57' 30.86"W	170.94
3	0.52	±956	N53° 02' 29.14"W	100.00
			N53° 02' 29.14"W	60.00
			N36° 57' 30.86"E	195.42
			S51° 26' 29.17"E	160.06
			S50° 58' 50.82"E	236.22
			S6° 35' 20.76"W	20.39
4	0.43	±568	N72° 10' 32.36"W	204.94
			N53° 02' 29.14"W	110.00
			N36° 57' 30.86"E	170.94
			S50° 58' 50.82"E	110.07
			S36° 57' 30.86"W	145.81
			S72° 10' 32.36"E	194.03
5	1.16	±983	S50° 58' 50.82"E	138.13
			S6° 35' 20.76"W	89.53
			N72° 10' 32.36"W	194.03
			N36° 57' 30.86"E	145.81
			S36° 57' 30.86"W	218.01
			S80° 50' 23.68"W	153.18
6	0.50	±632	S36° 57' 27.72"W	14.69
			N51° 33' 51.60"W	81.24
			N36° 52' 57.09"E	150.92
			N51° 27' 01.42"W	3.28
			N36° 38' 35.16"E	179.53
			S53° 02' 29.14"E	181.78
7	0.49	±624	S53° 02' 29.14"E	60.00
			S36° 57' 30.86"W	214.11
			N55° 16' 40.36"W	100.08
			N36° 57' 30.86"E	218.01
			S53° 02' 29.14"E	40.00
			S36° 57' 30.86"W	210.20
8	0.53	±636	N55° 16' 40.36"W	24.19
			N55° 16' 40.36"W	75.89
			N36° 57' 30.86"E	214.11
			S53° 02' 29.14"E	100.00
			S36° 57' 30.86"W	205.91
			N55° 16' 40.36"E	110.08
9	0.49	±613	N36° 57' 30.86"E	210.20
			S53° 02' 29.14"E	110.00
			S71° 41' 14.20"W	61.20
			S79° 28' 35.27"W	27.19
			N74° 00' 22.01"W	65.37
			N55° 16' 40.36"W	43.36
10	0.47	±603	N55° 16' 40.36"W	9.86
			N36° 57' 30.86"E	205.91
			S19° 25' 36.52"E	199.74
			S72° 10' 32.36"E	204.94
			S6° 35' 20.76"W	23.09
			S34° 03' 00.17"W	95.86
11	0.69	±738	S36° 57' 30.86"W	17.76
			S71° 41' 14.20"W	61.20
			N19° 25' 36.52"W	199.74
			S39° 50' 52.22"W	128.50
			N51° 33' 51.60"W	265.54
			N36° 57' 27.72"E	14.69
12	0.48	±635	N80° 50' 23.68"E	153.18
			S55° 16' 40.36"E	100.08
			S55° 16' 40.36"E	75.89
			S34° 43' 19.64"W	41.63
			S9° 19' 35.63"W	88.65
			S16° 04' 08.38"E	25.52
13	0.48	±577	N53° 48' 36.84"W	209.92
			N39° 50' 52.22"E	128.50
			S55° 16' 40.36"E	24.19
			S55° 16' 40.36"E	110.08
			S55° 16' 40.36"E	9.86
			S74° 00' 22.01"E	65.37
14	0.49	±629	S2° 44' 03.66"E	156.20
			N75° 44' 01.97"W	133.07
			N16° 04' 08.38"W	26.14
			N16° 04' 08.38"W	22.53
			N9° 19' 35.63"E	88.65
			N34° 43' 19.64"E	41.63
15	0.54	±660	S55° 16' 40.36"E	43.36
			N71° 41' 14.20"E	61.20
			S18° 18' 45.80"E	229.86
			N75° 44' 01.97"W	109.52
			N75° 44' 01.97"W	44.76
			N2° 44' 03.66"W	156.20
16	0.52	±731	N79° 28' 35.27"E	27.19
			N2° 44' 03.66"W	156.20
			N75° 44' 01.97"W	44.76
			N2° 44' 03.66"W	156.20
			N79° 28' 35.27"E	27.19
			S21° 58' 52.41"W	10.00
17	0.65	±805	S48° 23' 23.07"W	181.63
			N68° 01' 07.59"W	90.24
			N21° 58' 52.41"E	10.00
			N21° 58' 52.41"E	10.00
			S68° 01' 07.59"E	23.42
			N21° 58' 52.41"E	122.68
18	0.38	±542	S75° 44' 01.97"E	109.52
			S75° 44' 01.97"E	39.44
			S47° 47' 18.45"W	25.40
			S43° 17' 32.07"W	114.75
			N37° 30' 57.93"W	87.00
			S43° 17' 32.07"W	47.69
19	0.38	±587	N56° 13' 34.55"W	25.36
			N43° 21' 30.59"E	21.90
			N20° 55' 26.11"E	117.47
			S68° 01' 07.59"E	73.76
			S21° 58' 52.41"W	10.00
			S68° 01' 07.59"E	90.24
20	0.35	±614	S21° 58' 52.41"W	10.00
			S68° 01' 07.59"E	90.24
			S48° 23' 23.07"W	181.63
			N68° 01' 07.59"W	90.24
			N21° 58' 52.41"E	10.00
			N21° 58' 52.41"E	10.00



## ALDERWOOD TERRACE

SECTION 04, TOWNSHIP 13 NORTH, RANGE 2 WEST, W.M.  
"CHEHALIS", WASHINGTON

TPN: 017492010007      TPN: 005605089041

TPN: 005605069027

TPN: 017491001000

TPN: 005604053041

TPN: 010716001000

TPN: 017492012002

TPN: 017483002000

TPN: 017483001000

TPN: 017484002000

TPN: 017485001000

TPN: 010716003000

TPN: 017492011001

TPN: 005805069022

VICINITY MAP  
N.T.S.

**PROJECT INFORMATION**

APPLICANT/OWNER: CHAD O'MEALY  
2188 JACKSON HIGHWAY  
CHEHALIS, WA 98532  
(800) 766-4885

PARCEL NO: 005605069022, -9024, 017492009000

SITE ADDRESS: 2118 & 2124 JACKSON HIGHWAY  
CHEHALIS, WA 98532

ZONING: R-UGA/R-2  
(MIN LOT SIZE = 6,000SF/5,000SF)

SITE AREA: 15.19 AC. TOTAL

PARKING: 137 STALLS

SANITARY SEWER: CITY OF CHEHALIS

WATER: CITY OF CHEHALIS

FIRE DISTRICT: FIRE DISTRICT 6

**SURVEY INFORMATION**

LEGAL DESCRIPTION:  
SECTION 04 TOWNSHIP 13N RANGE 02W PT E. MILLS DLC PT NW4  
NE4 LY NWLY JACKSON HWY

VERTICAL DATUM:  
ASSUMED

BASIS OF BEARING:  
WASHINGTON STATE PLANE, SOUTH ZONE (NAD 83/11) AS PER  
TIES TO WSDOT CONTROL POINTS CHE-18 AND CHE-06. HELD THE  
PUBLISHED COORDINATE AND COMBINED SCALE FACTOR AT POINT  
CHE-18 TO SCALE DISTANCES FROM GRID TO GROUND.

PARCEL SUMMARY TABLE				
LOT #	AREA (AC)	PERIMETER (FT)	SEGMENT BEARING	SEGMENT LENGTH
15	0.54	±660	N66° 35' 56.89"E	17.76
			S28° 29' 20.43"E	219.76
			S48° 23' 23.07"W	91.96
			N75° 44' 01.97"W	39.44
			N18° 18' 45.80"W	229.86
16	0.52	±731	N71° 41' 14.20"E	61.20
			S25° 41' 13.54"E	276.45
			S48° 23' 23.07"W	95.81
			N28° 29' 20.43"W	219.76
			N34° 03' 00.17"E	95.86
17	0.65	±805	N6° 35' 20.76"E	23.09
			N6° 35' 20.76"E	20.39
			S16° 04' 08.38"E	96.69
			S10° 54' 29.69"E	27.02
			N56° 42' 47.68"W	334.32
18	0.38	±542	N39° 50' 52.22"E	110.71
			S53° 48' 36.84"E	209.92
			S16° 04' 08.38"E	26.14
			S21° 58' 52.41"W	122.68
			N68° 01' 07.59"W	23.42
19	0.38	±587	S21° 58' 52.41"W	10.00
			N68° 01' 07.59"W	73.76
			N3° 37' 44.69"W	11.09
			N10° 54' 29.69"W	27.02
			N16° 04' 08.38"W	96.69
20	0.35	±614	S75° 44' 01.97"E	133.07
			S75° 44' 01.97"E	44.76
			S48° 23' 23.07"W	181.63
			N68° 01' 07.59"W	90.24
			N21° 58' 52.41"E	10.00

NO. DATE

DESIGNED BY: ARP  
DRAWN BY: ARP  
CHECKED BY: RWB

DATE: 11/23/21  
SCALE: 1" = 60'

**ALDERWOOD TERRACE**

PRELIMINARY PLAT MAP

CITY OF CHEHALIS WA.

**RB Engineering**  
DESIGN → PERMIT → MANAGE  
OFF: (360) 740-8819  
EMAIL: [chad@rbengineering.com](mailto:chad@rbengineering.com)  
P.O. Box 823  
CHEHALIS, WA 98532

811 Know what's below. Call 811 before you dig.

JOB NUMBER: 17025

DRAWING NAME: 17025\_CO.1\_PLAT

**P0.1**  
1 OF 1