

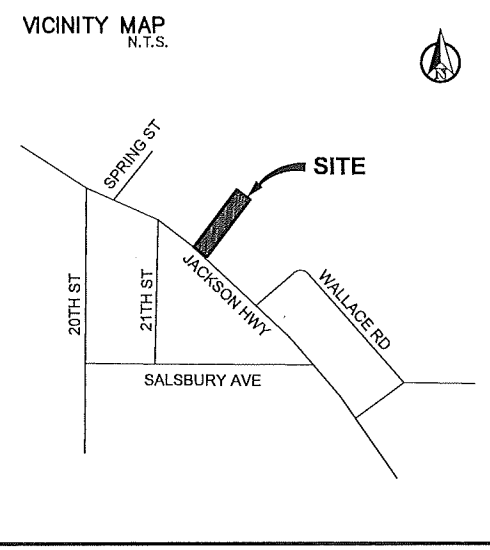
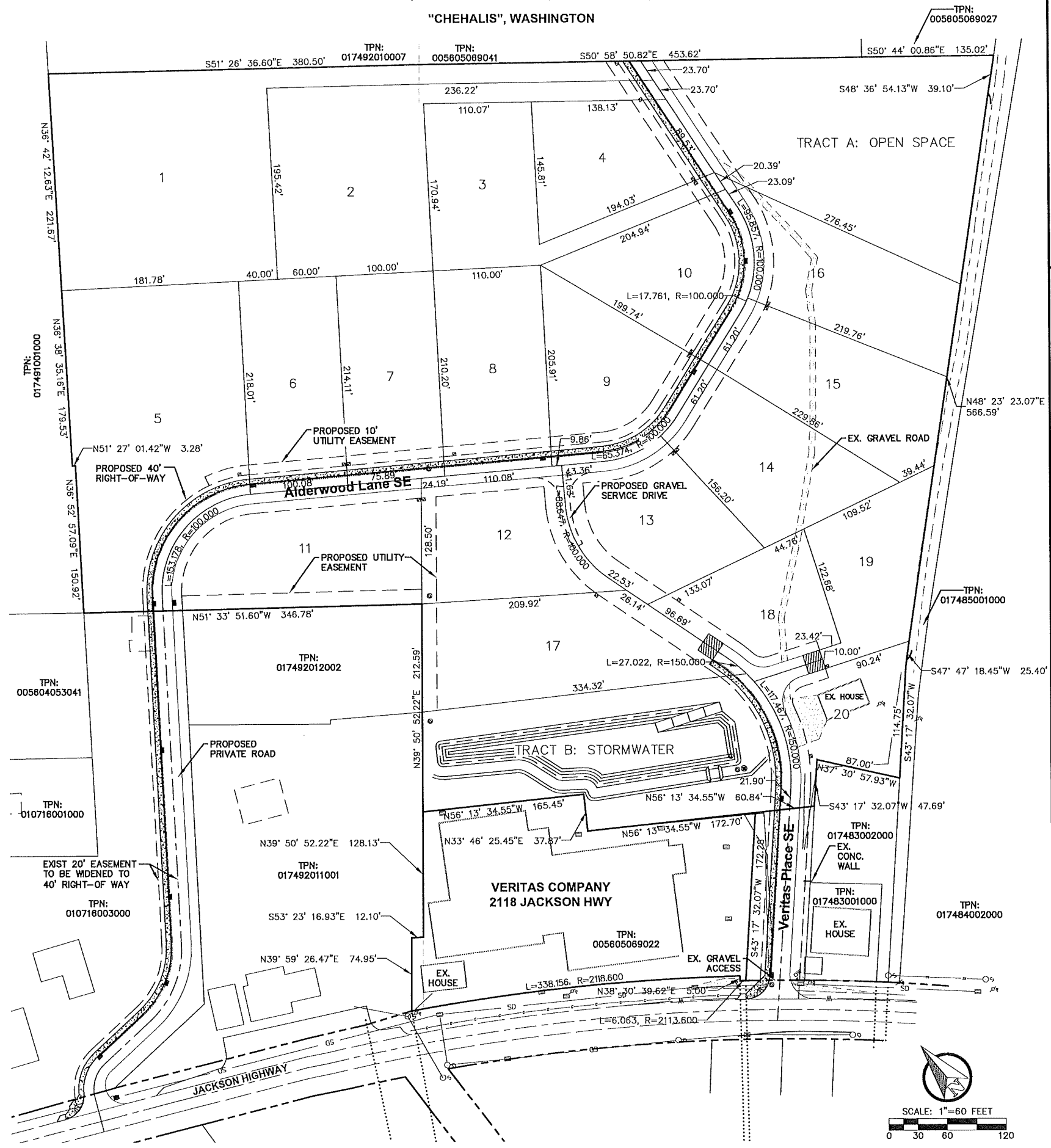
# ALDERWOOD TERRACE

SECTION 04, TOWNSHIP 13 NORTH, RANGE 2 WEST, W.M.

"CHEHALIS", WASHINGTON

LEGEND		
EXISTING	PROPOSED	
— W —	— W —	WATER MAIN
— SS —	— SS —	SANITARY SEWER MAIN
— FM —	— FM —	FORCE MAIN
— SD —	— SD —	STORM MAIN
— RD —	— RD —	ROOF DRAIN
— w —	— w —	FOOTING DRAIN
— G —	— G —	GAS LINE
— UGP —	— UGP —	POWER LINE
— T —	— T —	TELEPHONE LINE
— TV —	— CATV —	CABLE TV LINE
— — —	— — —	ROADWAY CENTERLINE
— — —	— — —	RIGHT-OF-WAY LINE
— — —	— — —	EASEMENT LINE
— — —	— — —	FRONT/BACK OF CURB
— — —	— — —	EDGE OF GRAVEL SHOULDER
— EP —	— EP —	EDGE OF PAVEMENT
	⊕	GATE VALVE
	⊥	THRUST BLOCKING
	⊞	WATER METER BOX
	⊞⊞	DOUBLE CHECK VALVE ASSEMBLY
	■	STORM DRAIN CATCH BASIN
	○	STORM DRAIN MANHOLE
	●	CLEANOUT
	xxx	SPOT ELEVATION
	●	SEWER MANHOLE
	●	SEWER CLEANOUT

LOT #	AREA (SF)	AREA (AC)
TRACT B: STORMWATER	45425	1.04
TRACT A: OPEN SPACE	52310	1.20
1	56386	1.29
2	35754	0.82
3	22576	0.52
4	18584	0.43
5	50746	1.16
6	21606	0.50
7	21215	0.49
8	22886	0.53
9	21340	0.49
10	20519	0.47
11	30171	0.69
12	20969	0.48
13	20843	0.48
14	21515	0.49
15	23536	0.54
16	22848	0.52
17	28365	0.65
18	16479	0.38
19	16434	0.38
20	15463	0.35



**PROJECT INFORMATION**

APPLICANT/OWNER: CHAD O'NEALY  
218B JACKSON HIGHWAY  
CHEHALIS, WA 98532  
(800) 766-4885

PARCEL NO: 005605069022

SITE ADDRESS: 2118 & 2124 JACKSON HIGHWAY  
CHEHALIS, WA 98532

ZONING: CITY

SITE AREA: 10.29 AC. TOTAL

PARKING: 137 STALLS

SANITARY SEWER: CITY OF CHEHALIS

WATER: CITY OF CHEHALIS

FIRE DISTRICT: FIRE DISTRICT 6

P0.1 CIVIL COVER SHEET AND OVERALL SITE PLAN  
P1.1 PRELIMINARY GRADING AND DRAINAGE PLAN  
P1.2 PRELIMINARY UTILITY PLAN

**SURVEY INFORMATION**

LEGAL DESCRIPTION:  
SECTION 04 TOWNSHIP 13N RANGE 02W PT E. MILLS DLC PT NW4 NE4 LY NWLY JACKSON HWY

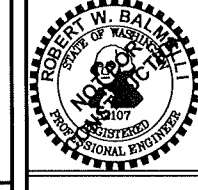
VERTICAL DATUM:  
ASSUMED

BASIS OF BEARING:  
WASHINGTON STATE PLANE, SOUTH ZONE (NAD 83/11) AS PER TIES TO WSDOT CONTROL POINTS CHE-18 AND CHE-06. HELD THE PUBLISHED COORDINATE AND COMBINED SCALE FACTOR AT POINT CHE-18 TO SCALE DISTANCES FROM GRID TO GROUND.

NO.	DATE	REVISION

DESIGNED BY: ARP  
DRAWN BY: ARP  
CHECKED BY: RWB  
DATE: 11/23/21  
SCALE: 1" = 40'

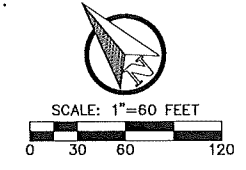
ALDERWOOD TERRACE  
CITY OF CHEHALIS WA

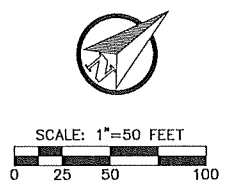


**RB Engineering**  
DESIGN → PERMIT → MANAGE  
OFF: (360) 746-8816  
EMAIL: rb@rbengineering.com  
P.O. Box 221  
CHEHALIS, WA 98532

811 Know what's below. Call 811 before you dig.

JOB NUMBER: 17025  
DRAWING NAME: 17025\_PO.1\_COVR  
**P0.1**  
1 OF 3

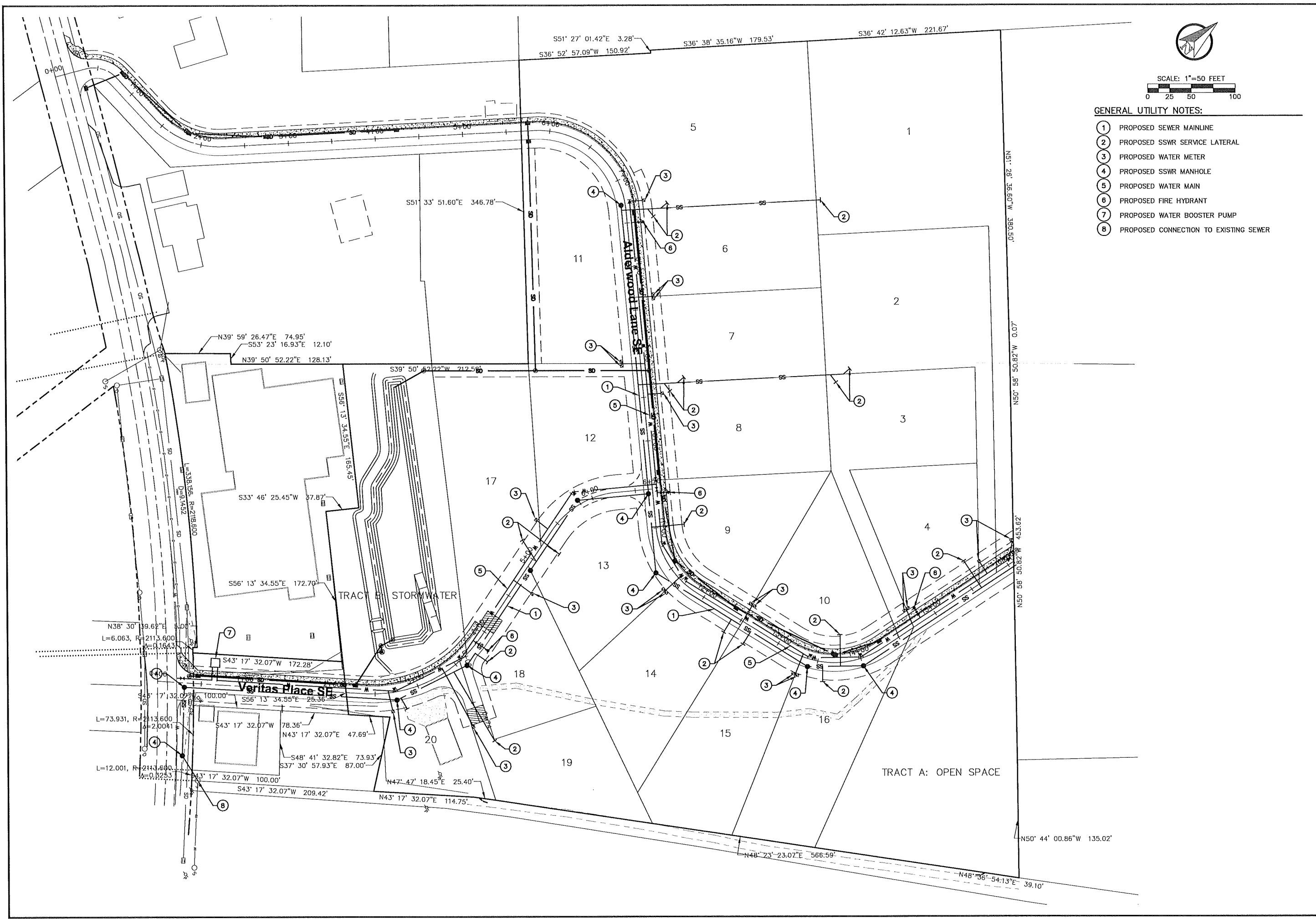




**GRADING & DRAINAGE NOTES:**

- ① DETENTION POND
- ② EMERGENCY SPILLWAY
- ③ PROPOSED STORM MANHOLE
- ④ PROPOSED CATCH BASIN

NO.   DATE	REVISION	DESIGNED BY: ARP	DRAWN BY: ARP	CHECKED BY: RWB	DATE: 11/23/21	SCALE: 1" = 50'
ALDERWOOD TERRACE			CITY OF CHEHALIS WA.			
PRELIMINARY GRADING AND DRAINAGE PLAN						
<b>RB Engineering</b> DESIGN → PERMIT → MANAGE P.O. Box 923 CHEHALIS, WA 98532 OFF: (360) 740-8819 EMAIL: <a href="mailto:info@rbengineering.com">info@rbengineering.com</a>						
JOB NUMBER: 17025 DRAWING NAME: 17025_P1.1_GDPL <b>P1.1</b> 2 OF 3						



SCALE: 1"=50 FEET  
 0 25 50 100

**GENERAL UTILITY NOTES:**

- ① PROPOSED SEWER MAINLINE
- ② PROPOSED SSWR SERVICE LATERAL
- ③ PROPOSED WATER METER
- ④ PROPOSED SSWR MANHOLE
- ⑤ PROPOSED WATER MAIN
- ⑥ PROPOSED FIRE HYDRANT
- ⑦ PROPOSED WATER BOOSTER PUMP
- ⑧ PROPOSED CONNECTION TO EXISTING SEWER

NO. DATE	
DESIGNED BY: ARP	DRAWN BY: ARP
CHECKED BY: RWB	DATE: 11/23/21
SCALE: 1" = 40'	
<b>ALDERWOOD TERRACE</b>	
<b>PRELIMINARY UTILITY PLAN</b>	
<b>RB Engineering</b> DESIGN → PERMIT → MANAGE P.O. Box 573 CHEHALIS, WA 98522 OFF: (360) 740-8919 EMAIL: info@rbengineering.com	
JOB NUMBER 17025 DRAWING NAME 17025_P1.2_SSWR <b>P1.2</b> 3 OF 3	