

JACKSON PARK III

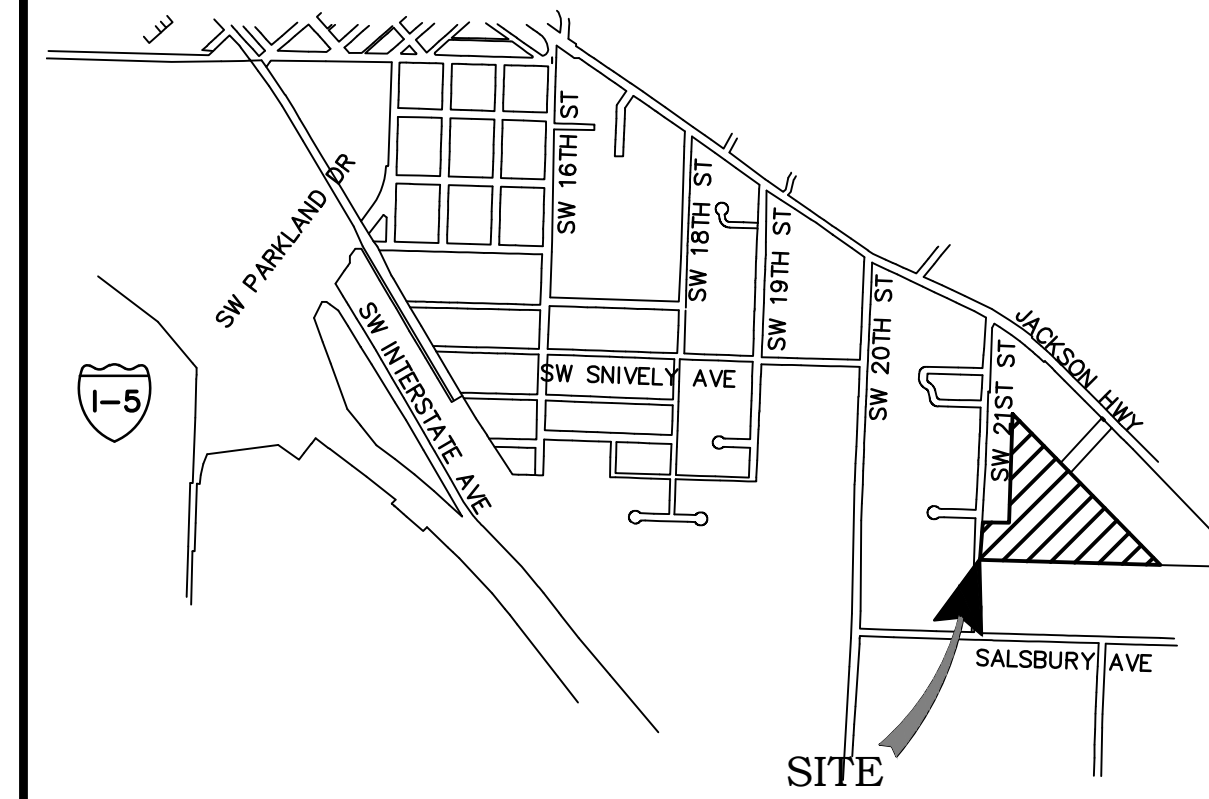
SECTION 4, TOWNSHIP 13 NORTH, RANGE 2 WEST, W.M.
"CHEHALIS", WASHINGTON



SCALE: 1"=40 FEET
0 20 40 80

VICINITY MAP

N.T.S.



NO.	DATE	REVISION

DESIGNED BY: CA
DRAWN BY: ALE
CHECKED BY: RWB
DATE: 7/9/2021
SCALE: 1" = 40'

PROJECT INFORMATION

APPLICANT/OWNER: K&W PROPERTIES LLC.
ATTN: STEPHANIE & KARL WERNER
148 ROSEWOOD DR.
CHEHALIS, WA 98532
(360) 520-4080
STEPHANIERWERNER@MSN.COM

PARCEL NO: 005604183244

SITE ADDRESS: "0" SW 21ST STREET
CHEHALIS, WA. 98532

ZONING: R4 - MULTI-FAMILY, HIGH DENSITY

SITE AREA: TOTAL = 5.1 AC
WETLAND = 0.56 AC
NET = 4.54 AC

DENSITY: 13.3 (GROSS)
15.0 (NET)

PARKING - REQUIRED: 136 STALLS (2 PER UNIT)
PROVIDED: 126 STD./RESERVED
3 ADA
16 GARAGES
145 TOTAL STALLS

SOILS: GALVIN SILT LOAM, LACAMAS SILT LOAM

WATER: CITY OF CHEHALIS

SEWER: CITY OF CHEHALIS

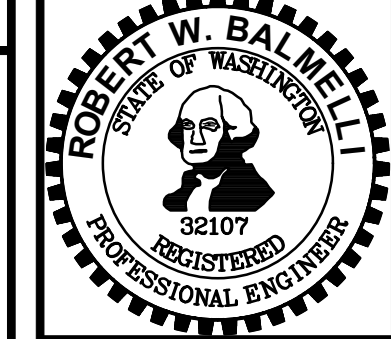
FIRE DISTRICT: FIRE DISTRICT 6

BUILDING SETBACKS: FRONT YARD = 20'
ADJACENT PARCELS = 5'

JACKSON PARK III
CHEHALIS, WA 98532

LEWIS COUNTY WA.

PRELIMINARY SITE PLAN



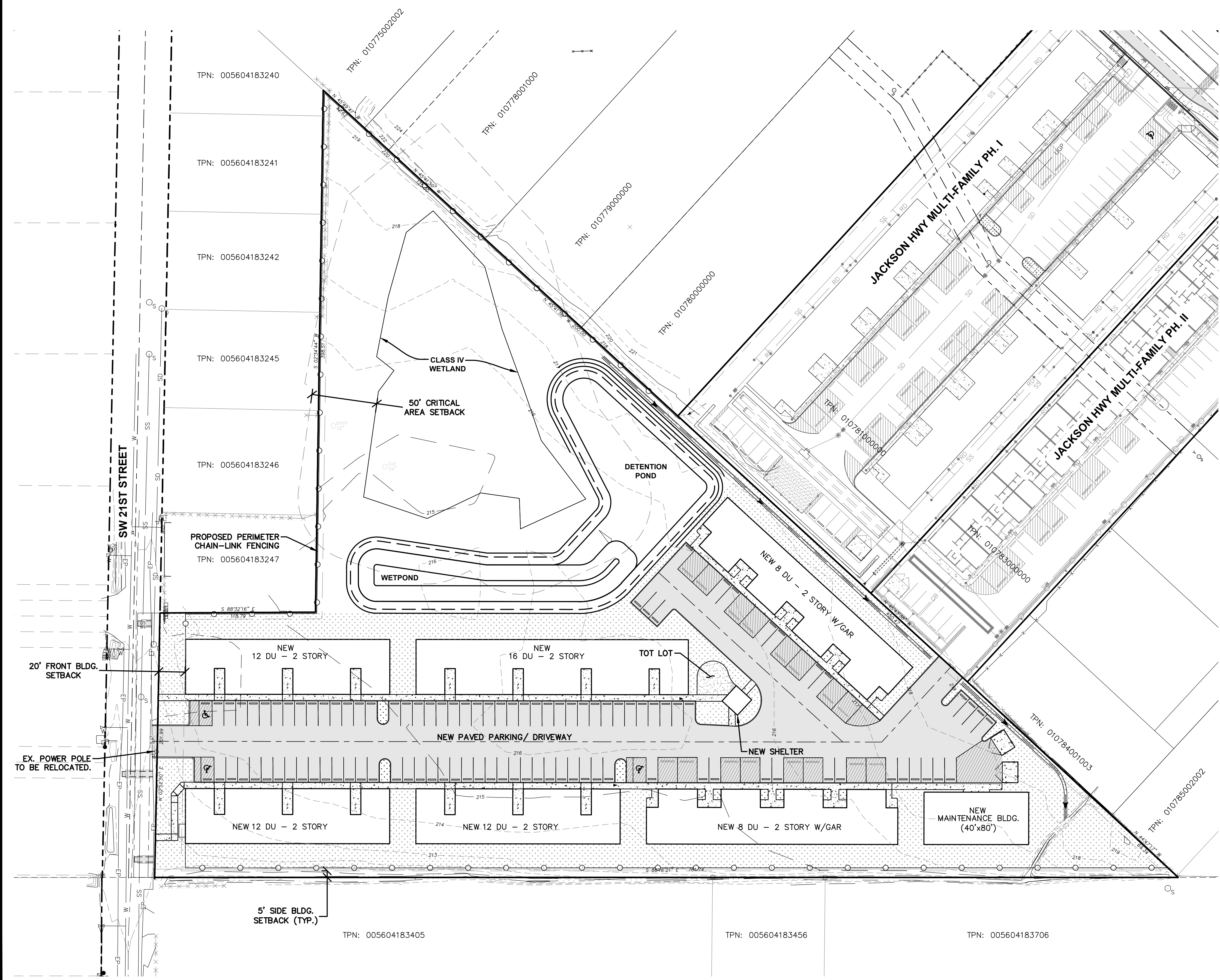
RB Engineering
DESIGN → PERMIT → MANAGE

OFF: (360) 740-8819
EMAIL: CnrProse@RBEng.com

P.O. Box 923
CHEHALIS, WA 98532

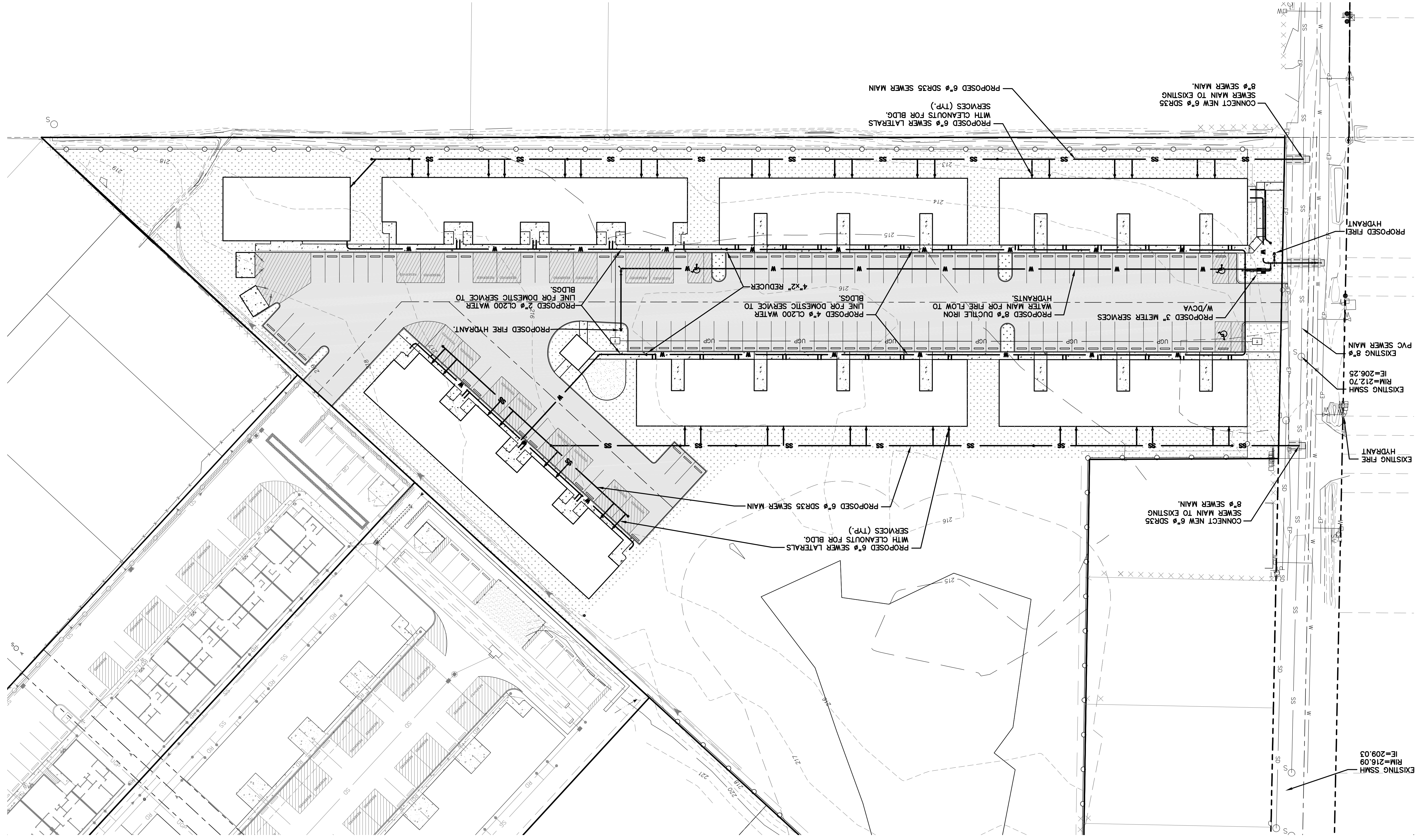
811 Know what's below. Call 811 before you dig.

JOB NUMBER: 21011
DRAWING NAME: 21011_PSP
C1.0
1 OF 4



LEGEND

EXISTING	PROPOSED	DESCRIPTION
— W —	— W —	WATER MAIN
— SS —	— SS —	SANITARY SEWER MAIN
— FM —	— FM —	FORCE MAIN
— SD —	— SD —	STORM MAIN
— RD —	— RD —	ROOF DRAIN
— G —	— G —	FOOTING DRAIN
— UGP —	— UGP —	GAS LINE
— T —	— T —	POWER LINE
— TV —	— TV —	TELEPHONE LINE
— — —	— — —	CABLE TV LINE
— — —	— — —	ROADWAY CENTERLINE
— — —	— — —	RIGHT-OF-WAY LINE
— — —	— — —	EASEMENT LINE
— — —	— — —	FRONT/BACK OF CURB
— — —	— — —	EDGE OF GRAVEL SHOULDER
— EP —	— EP —	EDGE OF PAVEMENT



3 OF 4
C1.2

21011_PUPL
DRAWING NAME

21011
JOB NUMBER

811
Know what's below.
Call 811 before you dig.

RB Engineering
DESIGN → PERMIT → MANAGE

P.O. Box 973
CHEHALIS, WA 98532

OFF: (360) 746-8919
EMAIL: info@rbengineering.com

PRELIMINARY UTILITY PLAN

JACKSON PARK III
CHEHALIS, WA 98532

WA.
LEWIS COUNTY

DESIGNED BY: CA
DRAWN BY: ALE
CHECKED BY: RWB

DATE: 6/3/2021
SCALE: 1" = 40'

NO.	DATE	REVISION

EXISTING SSMH
RIM=216.09
IE=209.03

EXISTING FIRE
HYDRANT

EXISTING SSMH
RIM=212.70
IE=206.25

EXISTING 8" PVC
SEWER MAIN

PROPOSED FIRE
HYDRANT

CONNECT NEW 6" SDR35
SEWER MAIN TO EXISTING
8" SEWER MAIN.

PROPOSED 6" SEWER LATERALS
WITH CLEANOUTS FOR BLDG.
SERVICES (TYP.)

PROPOSED 3" METER SERVICES
W/DCVA

PROPOSED 8" DUCTILE IRON
WATER MAIN FOR FIRE FLOW TO
HYDRANTS.

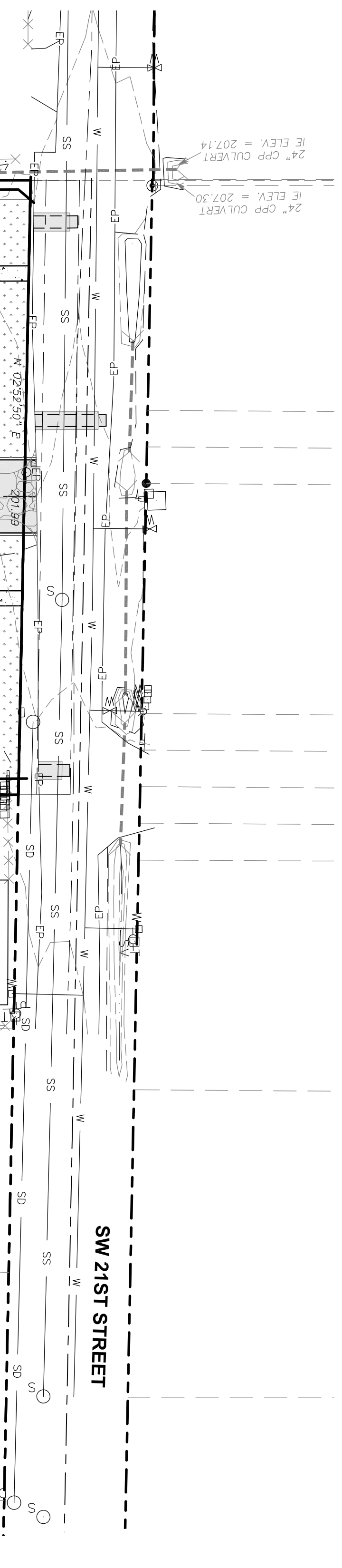
PROPOSED 4" CL200 WATER
LINE FOR DOMESTIC SERVICE TO
BLDG.

PROPOSED 2" CL200 WATER
LINE FOR DOMESTIC SERVICE TO
BLDG.

PROPOSED FIRE HYDRANT.

PROPOSED 6" SDR35 SEWER MAIN
WITH CLEANOUTS FOR BLDG.
SERVICES (TYP.)

CONNECT NEW 6" SDR35
SEWER MAIN TO EXISTING
8" SEWER MAIN.



- WSDE BMP LIST:
- (CE) STABILIZED CONSTRUCTION ENTRANCE-EXIT - BMP C105
 - (TPS) TEMPORARY AND PERMANENT SEEDING - BMP C120
 - (SR) SURFACE ROUGHENING - BMP C
 - (OP) OUTLET PROTECTION - BMP C209
 - (IP) STORM DRAIN INLET PROTECTION - BMP C220
 - (SF) SILT FENCE - BMP C233

