

Development Review Committee is represented by the City of Chehalis:
Building and Planning | Engineering | Public Works | Fire Department | Police Department | Airport

Development Review Committee Agenda

Chehalis Building and Planning Department

May 10, 2023, at 9 A.M.

Meeting Location: Chehalis Airport Conference Room

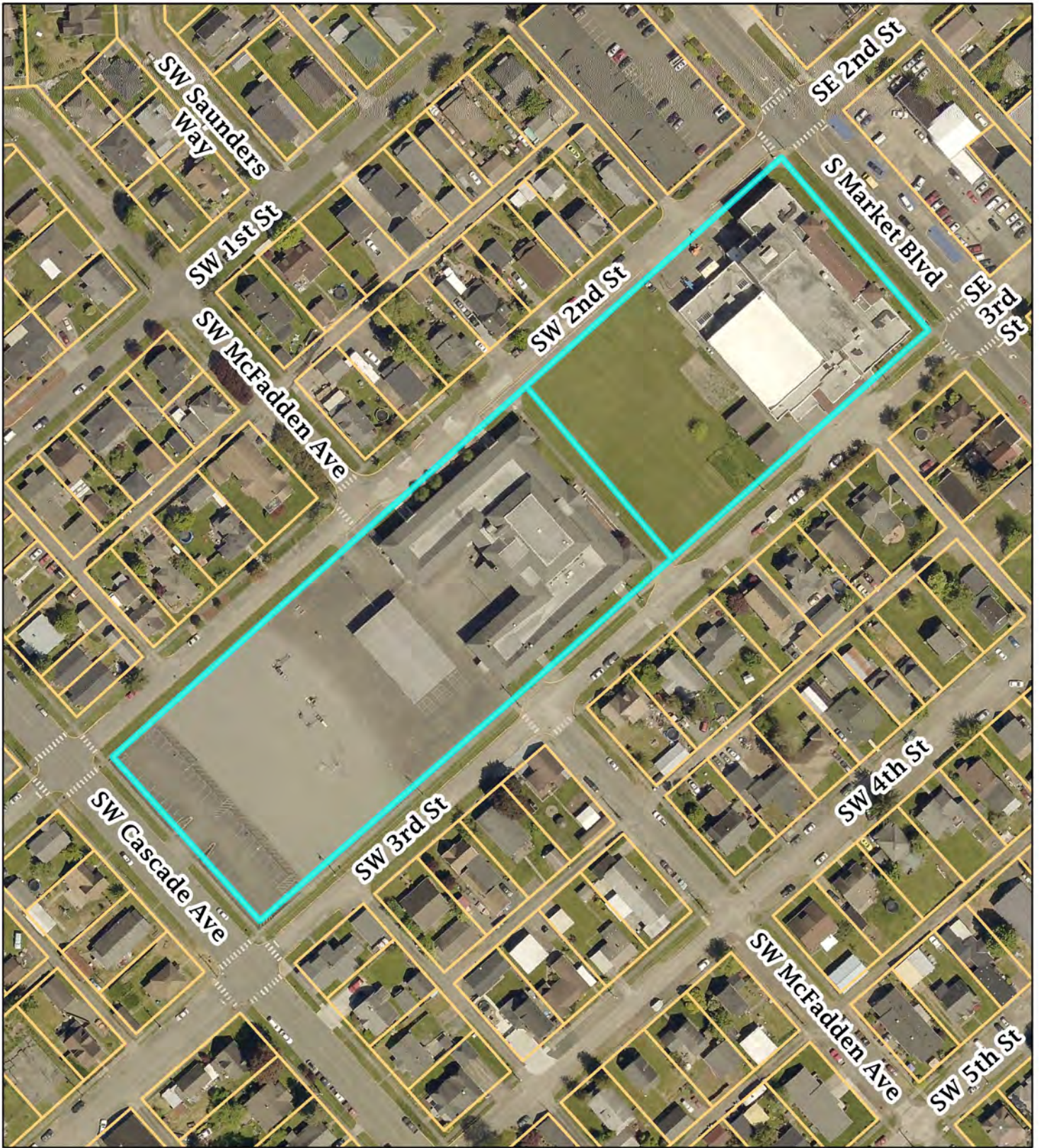
9:00 AM ST-22-0008 RE Bennett and Cascade Elementary Schools Apartments

The applicant proposes 84-unit multi-family development in the historic structures of RE Bennett and Cascade Elementary School. Lewis County parcel ID # 004236002001 and 004236002002. The property is approximately 3.81 acres; 165,964 sq ft.

9:30 Interdepartmental staff meeting.

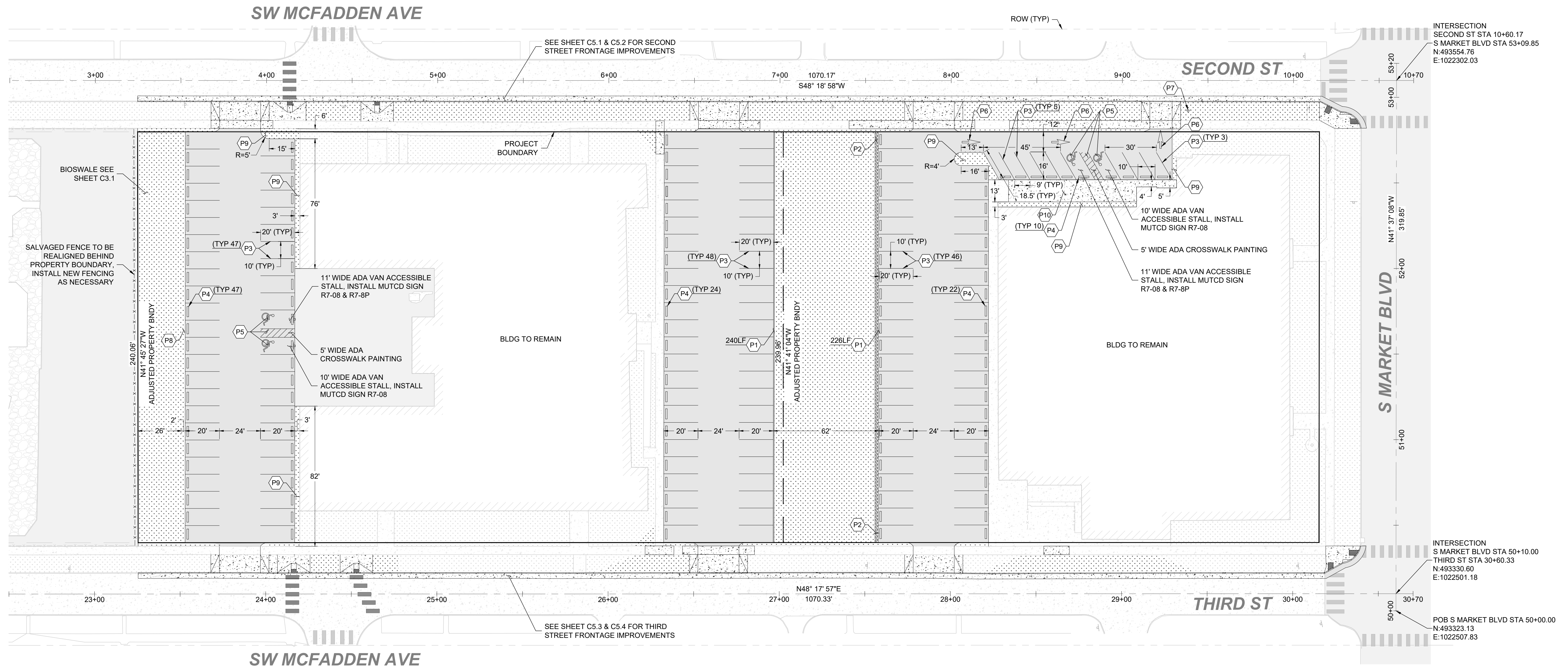
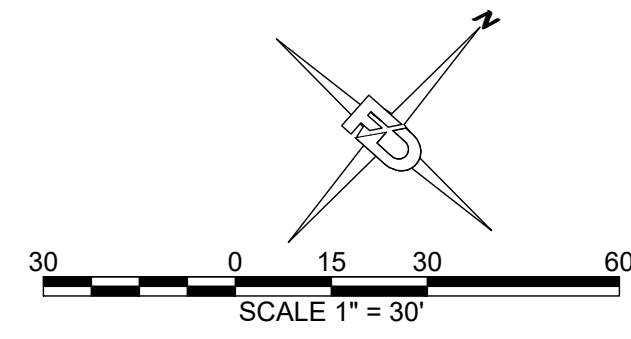
Join Zoom Meeting

<https://us06web.zoom.us/j/83910241095?pwd=dUI1Ym0rTkt6SHZCZjkxUTRlVDBUUT09>



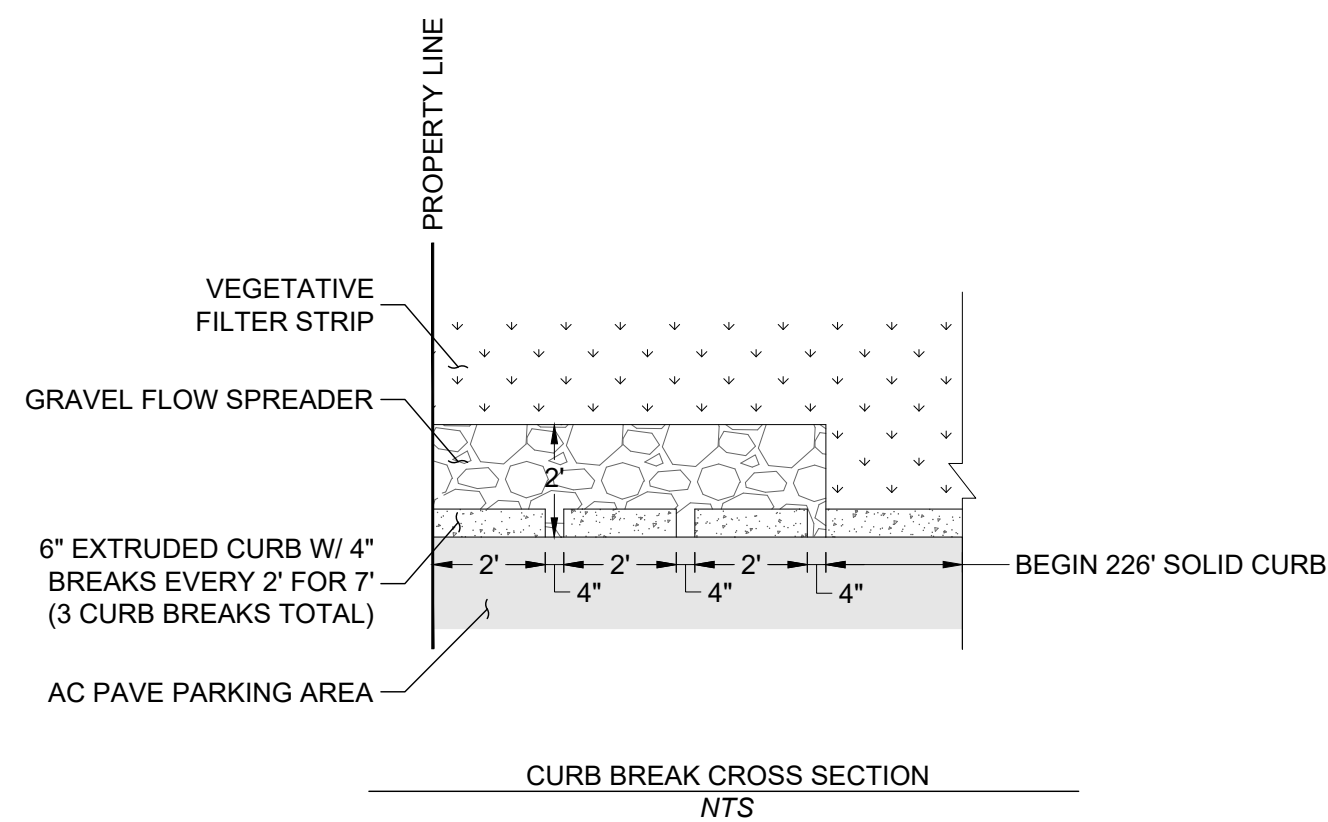
Vicinity map for ST-22-0008
233 S Market Blvd
RE Bennett and Cascade Elementary

SECTION 32 TOWNSHIP 14N RANGE 02W



PARKING LOT NOTES:

- P1 INSTALL 6" CURB
- P2 INSTALL 7LF 6" CURB WITH 4" CURB BREAKS AND GRAVEL FLOW SPREADER, SEE CROSS SECTION THIS SHEET
- P3 PAINT PARKING STALL
- P4 INSTALL WHEEL STOP
- P5 PAINT ADA CROSS STRIPING, SYMBOL AND INSTALL RESERVED PARKING MUTCD SIGNS
- P6 PAINT ONE WAY ARROWS
- P7 INSTALL DO NOT ENTER MUTCD SIGN R5-1
- P8 INSTALL 240LF GRAVEL FLOW SPREADER
- P9 INSTALL PLANTER
- P10 INSTALL CONC PATHWAY, WIDTH VARIES, SEE PLAN DIMENSIONS



NOTE TO CONTRACTOR:

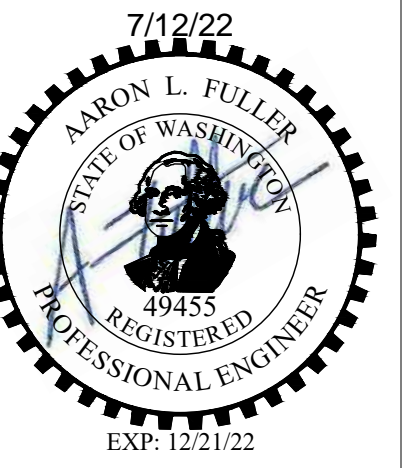
1. A HIGH PROFILE GAS FACILITY IS LOCATED ALONG THE NE SIDE OF SECOND ST. CONTRACTOR TO VERIFY LOCATION AND DEPTH. IF CHANGES ARE NECESSARY CONTRACTOR IS TO CONTACT FULLER DESIGNS. CONTRACTOR MUST CONTACT PSE AND SCHEDULE A STANDBY
2. CONTRACTOR TO POT HOLE AND FIELD VERIFY UTILITIES PRIOR TO CONSTRUCTION

APPROVED FOR CONSTRUCTION

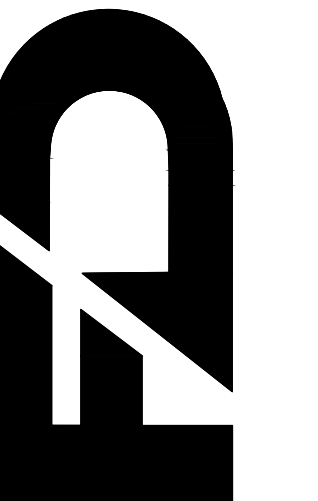
BY: _____ DATE: _____
PUBLIC WORKS DEPARTMENT OR
DESIGNATED CONSULTANT

APPROVAL EXPIRES: _____

DRAWING TITLE: LOT LAYOUT
DATE: 6/22/22
SCALE: 1"=30'
DRAWN: BW
CHECKED: MP
PROJECT NAME: HISTORIC SCHOOL HOUSING RENOVATION



FULLER DESIGNS
1101 KRESKY AVE
CENTRALIA, WA 98531
(360) 807-4420



REV.	DESCRIPTION	DATE
0	ISSUED FOR CONSTRUCTION	6/22/22

C2.1

6 OF 15