

GREEN HILL SCHOOL

RECREATION BUILDING

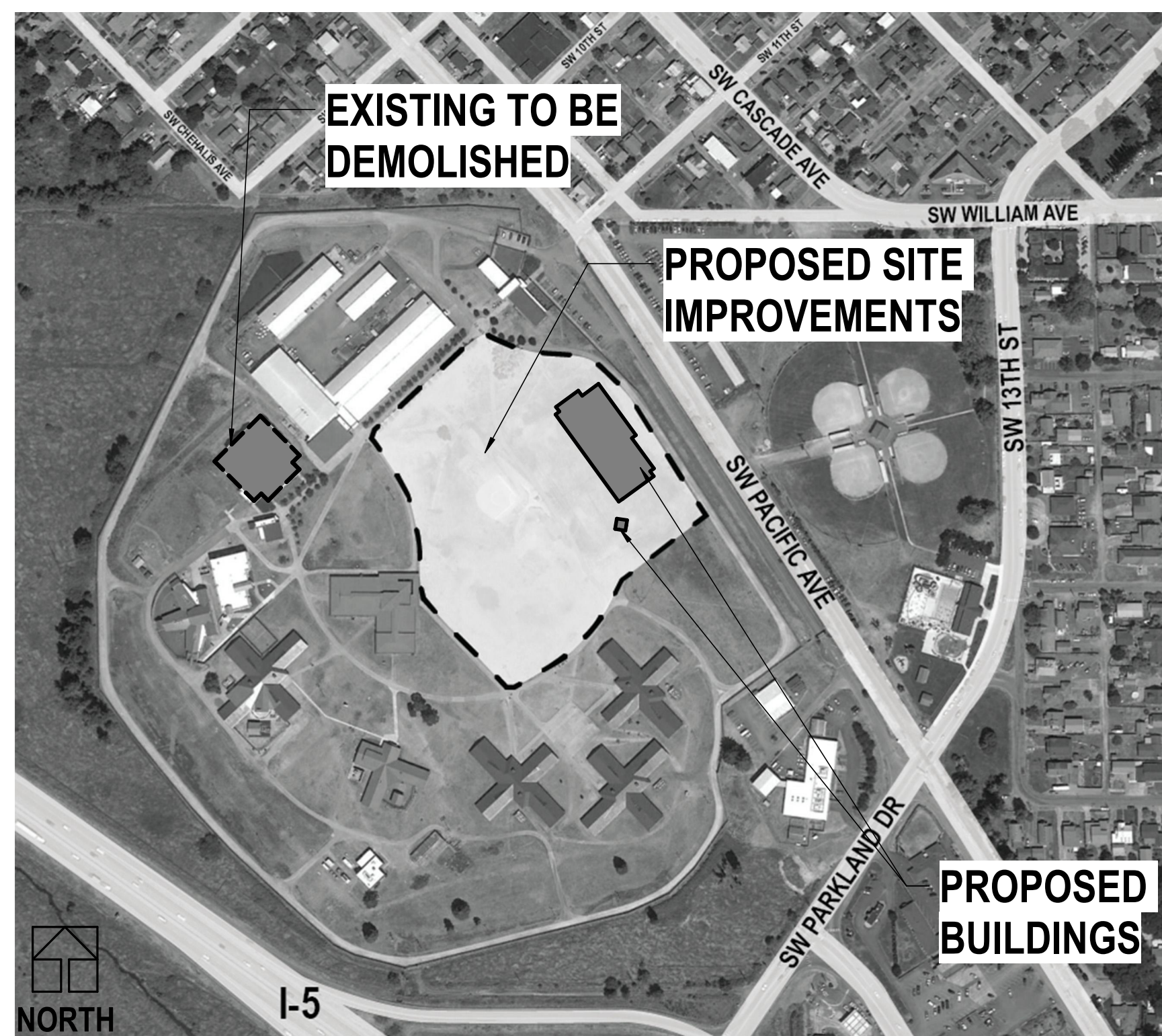
LAND USE PERMIT

375 SW 11TH STREET
CHEHALIS, WA 98532

OCTOBER 01, 2021



VICINITY MAP



PROJECT TEAM

OWNER

DEPARTMENT OF CHILDREN, YOUTH & FAMILIES (DCYF)
1110 JEFFERSON ST SE
OLYMPIA, WA 98501
P. 360.951.0717

TRENT PHILLIPS
PHILLTA@DCYF.WA.GOV

MECHANICAL ENGINEER

DLR GROUP
51 UNIVERSITY STREET, SUITE 600
SEATTLE, WA 98101
P. 206.461.6000

JOE LLONA
JLLONA@DLRGROUP.COM

OWNER REPRESENTATIVE

WASHINGTON STATE DEPARTMENT OF ENTERPRISE SERVICES
1500 JEFFERSON ST SE
OLYMPIA, WA 98504
P. 360.401.9528

DAVID HINKSON
DAVID.HINKSON@DES.WA.GOV

ELECTRICAL ENGINEER

DLR GROUP
51 UNIVERSITY ST, #600
SEATTLE, WA 98101
P. 206.461.6000

SEAN AVERY
SAVERY@DLRGROUP.COM

ARCHITECT

DLR GROUP
51 UNIVERSITY ST, SUITE 600
SEATTLE, WA 98101
P. 206.461.6000

ERICA LOYND
ELOYND@DLRGROUP.COM

LANDSCAPE ARCHITECT

HBB LANDSCAPE ARCHITECTURE
2101 4TH AVE N, SUITE 1800
SEATTLE, WA 98103
P. 206.682.3051

JULIET VONG
JVONG@HBBSEATTLE.COM

CIVIL ENGINEER

KPFF CONSULTING ENGINEERS
1601 5TH AVE, #1600
SEATTLE, WA 98101
P. 206.622.5822

MARTY CHASE
MARTY.CHASE@KPFF.COM

ENVELOPE CONSULTANT

RDH BUILDING SCIENCE
2101 N 34TH ST
SEATTLE, WA 98103
P. 206.324.2272

MICHAEL KRAMER
MKRAMER@RDH.COM

STRUCTURAL ENGINEER

DLR GROUP
51 UNIVERSITY STREET, SUITE 600
SEATTLE, WA 98101
P. 206.461.6000

WILLIAM RAGLAND
WRAGLAND@DLRGROUP.COM

ACOUSTICIAN

DLR GROUP
51 UNIVERSITY STREET, SUITE 600
SEATTLE, WA 98101
P. 206.461.6000

LOGAN PIPPIN
LPIPPIN@DLRGROUP.COM

