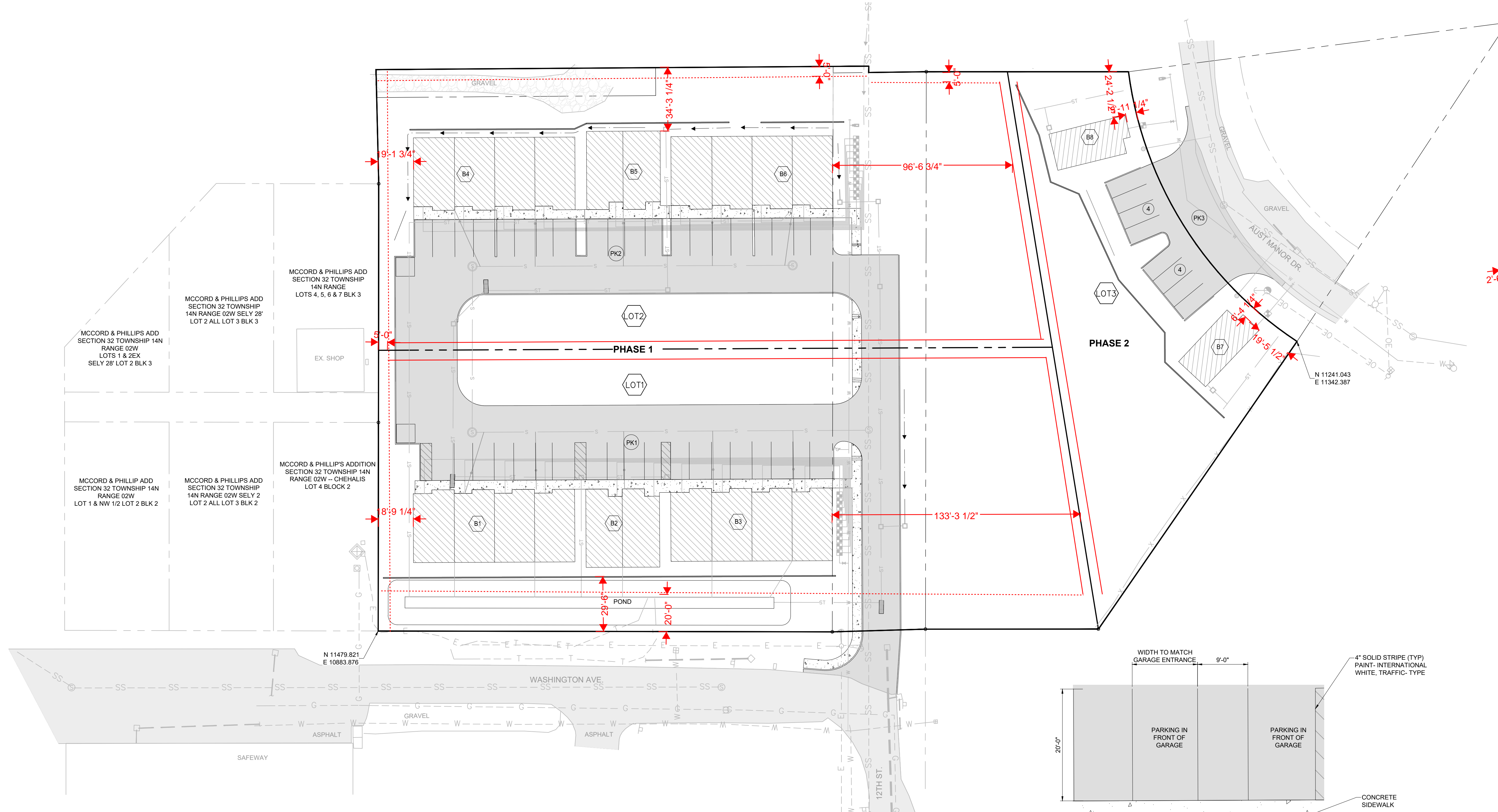
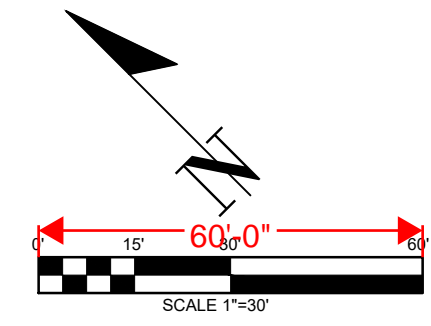


SECTION 32 TOWNSHIP 14N RANGE 02W
CHEHALIS, WASHINGTON



DEVELOPMENT CONCEPT NOTES:

EXISTING 3.02 ACRES TOTAL TO BE DIVIDED INTO 3 LOTS

PHASE 1

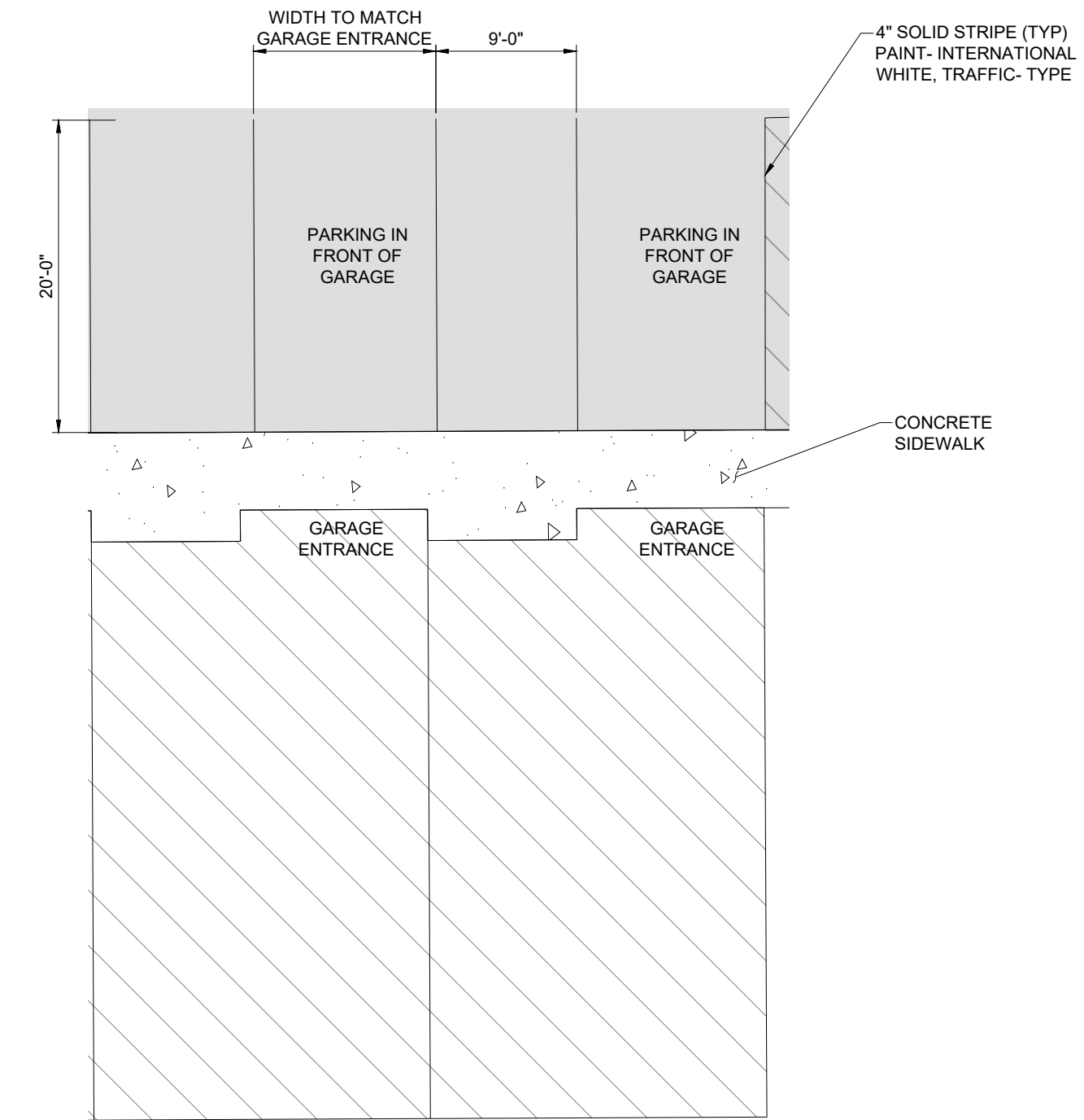
(LOT1) 1.30 ACRES POND	(LOT2) 1.21 ACRES
(B1) MULTIFAMILY BUILDING 2 STORY 4 UNITS	(B4) MULTIFAMILY BUILDING 2 STORY 4 UNITS
(B2) DUPLEX BUILDING 2 STORY 2 UNITS	(B5) DUPLEX BUILDING 2 STORY 2 UNITS
(B3) MULTIFAMILY BUILDING 2 STORY 4 UNITS	(B6) MULTIFAMILY BUILDING 2 STORY 4 UNITS
(PK1) ASPHALT PARKING LOT 18 SPACES 1 ADA SPACE	(PK2) ASPHALT PARKING LOT 20 SPACES

TOTAL PARKING SPACES = 39

PHASE 2

(LOT3) 0.51 ACRE
(B7) SINGLE HOME BUILDING 2 STORY 1 UNITS
(B8) SINGLE HOME BUILDING 2 STORY 1 UNITS
(PK3) ASPHALT PARKING LOT 8 SPACES

TOTAL PARKING SPACES = 8



TYPICAL PARKING SPACES LAYOUT

APPROVED FOR CONSTRUCTION
BY _____ DATE _____
PUBLIC WORKS DEPARTMENT OR
DESIGNATED CONSULTANT
APPROVAL EXPIRES: _____

DRAWING TITLE: LOT LAYOUT PLAN	
SCALE: 1:30	CHECKED: ALF
DATE: 03/15/22	DRAWN: MM
PROJECT NAME: NICHOLAS WASHINGTON AVE.	

FULLER DESIGNS
1101 KRESKY AVE
CENTRALIA, WA 98531
(360) 807-4420

REV:	DESCRIPTION:	DATE:
0	ISSUED FOR CONSTRUCTION	03/15/22

C2.2