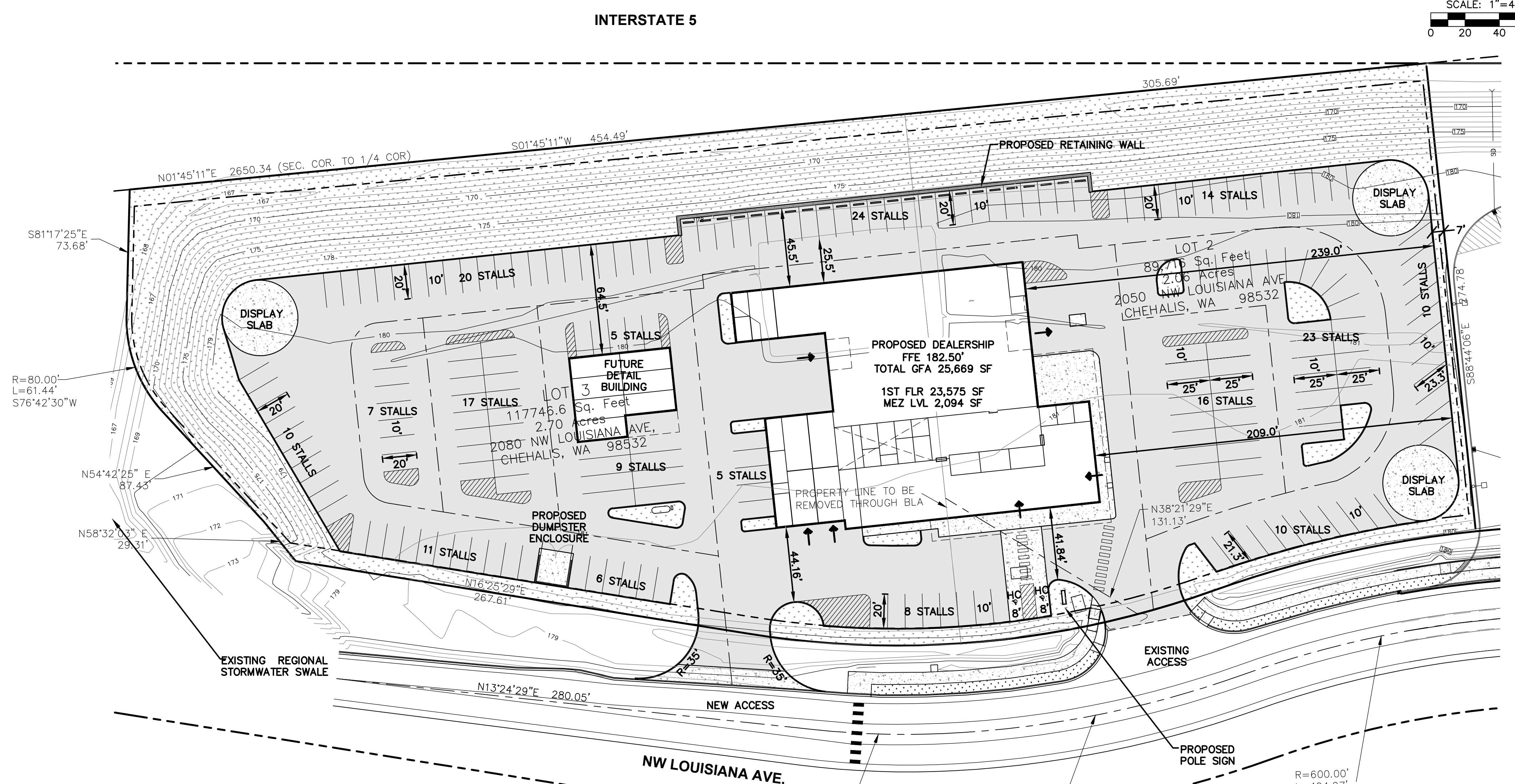
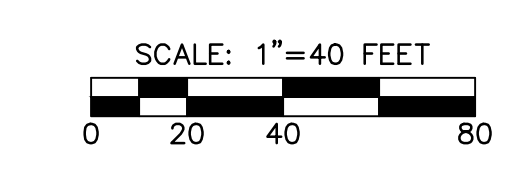
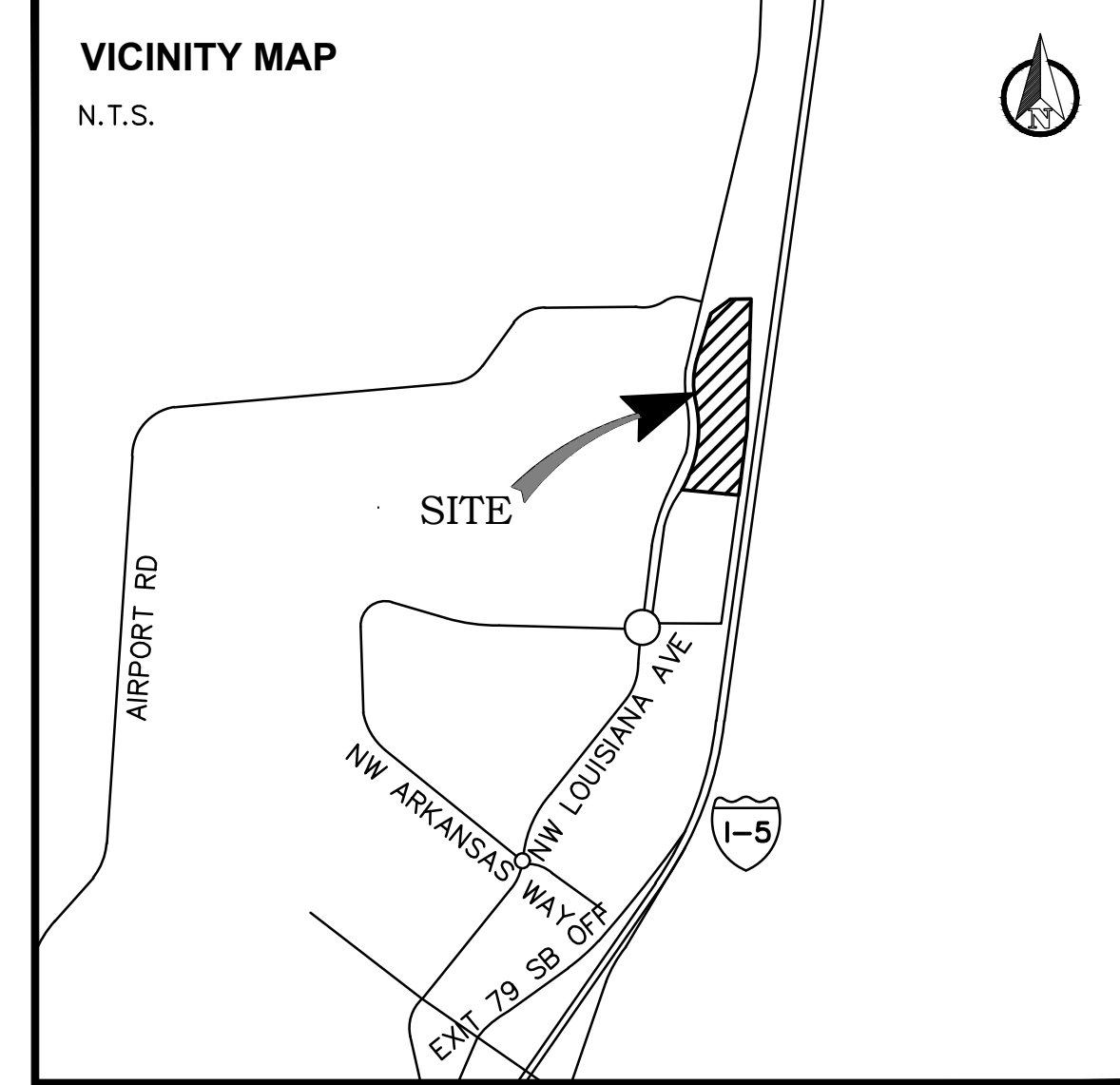


AWESOME CHEVROLET/BUICK

SECTION 19, TOWNSHIP 14 NORTH, RANGE 02 WEST, W.M.
LEWIS COUNTY, WASHINGTON



PROJECT INFORMATION	
APPLICANT:	HJP INVESTMENTS, HEIDI PEHL PO BOX 1227 CHEHALIS, WA 98532 HEIDIPEHL@5CARS.COM
PARCEL NOS:	0216120110-21, 22, 23,
SITE ADDRESS:	2050 & 2080 NW LOUISIANA AVE. CHEHALIS, WA 98532
ZONING:	GC - GENERAL COMMERCIAL
SITE AREA:	4.76 ACRES
GRADING ESTIMATE:	4,150 ± CY CUT XXXX ± CY FILL
SOILS:	ALVOR SILTY CLAY LOAM REED SILTY CLAY LOAM
SANITARY SEWER:	CITY OF CHEHALIS
WATER:	CITY OF CHEHALIS
FIRE DISTRICT:	CITY OF CHEHALIS

SHEET INDEX	
C0.1	PRELIMINARY CIVIL COVER SHEET
C1.1	PRELIMINARY GRADING AND DRAINAGE PLAN
C1.2	PRELIMINARY WATER AND SEWER SERVICE PLAN

SURVEY INFORMATION	
LEGAL DESCRIPTION	
SECTION 19 TOWNSHIP 14N RANGE 02W PT E2 E2 E2 LT 2 BLA 3476732	
VERTICAL DATUM	
NAVD 88 (NGVD 29 = -3.41 FT)	
BASIS OF BEARING	
BEARINGS ARE BASED ON WASH. ST. COORDINATE SYSTEM SOUTH ZONE - GRID NORTH - FROM TIES TO NGS AND WSDOT MONUMENTS. SECTION AND BOUNDARIES ARE BASED ON PREVIOUS SURVEY RECORDED ON THIS PARCEL UNDER AUDITOR'S FILE NO. 3235421	

GEOTECHNICAL REPORT
CONTRACTOR SHALL OBTAIN SITE GEOTECHNICAL REPORT
PREPARED BY INSIGHT GEOLOGIC. ALL CONSTRUCTION,
EARTHWORK AND SUBGRADE PREPARATION SHALL COMPLY
WITH THE REPORT AND IBC STANDARDS.

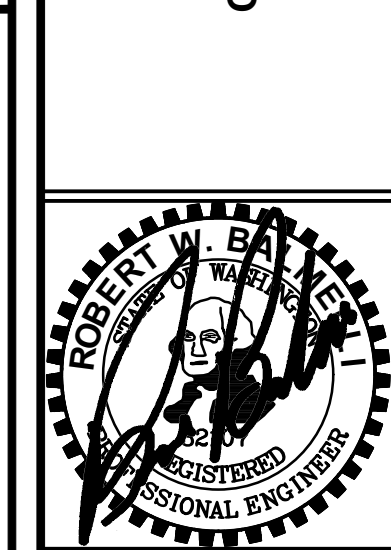
PARKING SUMMARY	
NEW UNIT DISPLAY:	2
NEW UNIT STORAGE/DISPLAY:	110
USED UNIT DISPLAY:	27
CUSTOMER STALLS:	18
ADA ACCESSIBLE:	2
EMPLOYEE STALLS:	18
ELECT. VEHICLE STA:	5
DETAIL PARKING:	8
SERVICE PARKING:	23
TOTAL EXTERIOR:	213

LEGEND		
EXISTING	PROPOSED	
— W —	— W —	WATER MAIN
— SS —	— SS —	SANITARY SEWER MAIN
— FM —	— FM —	FORCE MAIN
— SD —	— SD —	STORM MAIN
— RD —	— RD —	ROOF DRAIN
	— / —	FOOTING DRAIN
— G —	— G —	GAS LINE
— UGP —	— UGP —	POWER LINE
— T —	— T —	TELEPHONE LINE
— TV —	— CATV —	CABLE TV LINE
— — —	— — —	ROADWAY CENTERLINE
— — —	— — —	RIGHT-OF-WAY LINE
— — —	— — —	EASEMENT LINE
— — —	— — —	FRONT/BACK OF CURB
— — —	— — —	EDGE OF GRAVEL SHOULDER
— EP —	— EP —	EDGE OF PAVEMENT

NO.	DATE	REVISION

DESIGNED BY: CLA
DRAWN BY: CES
CHECKED BY: RWB
DATE: 4/23/2021
SCALE: 1" = 40'

AWESOME CHEVROLET/BUICK
2050 NW LOUISIANA AVE.
CHEHALIS, WA 98532
CITY OF CHEHALIS, WA.



RB Engineering
DESIGN → PERMIT → MANAGE
OFF: (360) 740-8819
EMAIL: CWP@rbengineering.com
P.O. Box 923
CHEHALIS, WA 98532

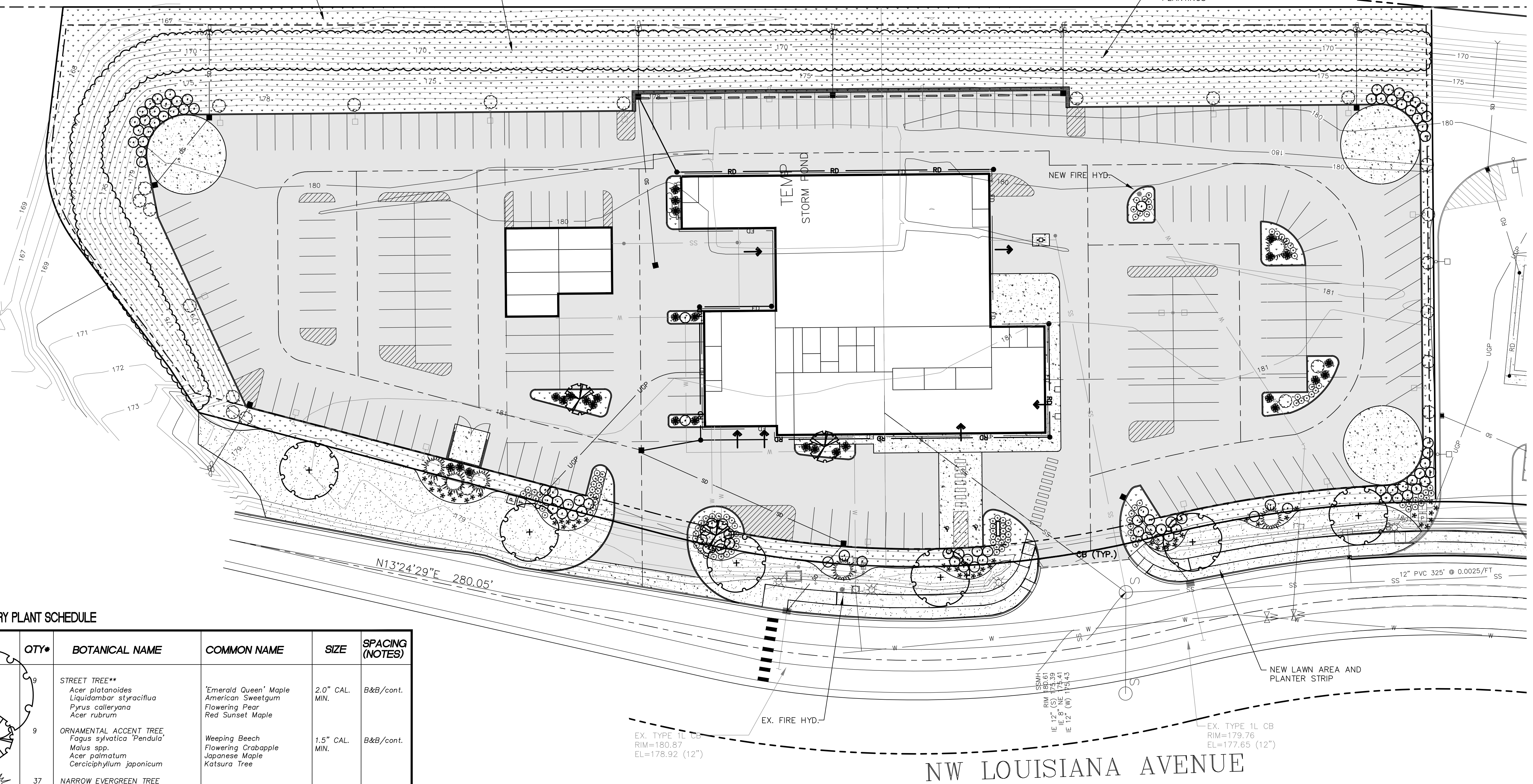
811 Know what's below. Call 811 before you dig.
JOB NUMBER: 20125
DRAWING NAME: 20125_COVR
C0.1
1 OF 3

APPROVED FOR CONSTRUCTION
BY: _____ DATE: _____
DIRECTOR OF PUBLIC WORKS
APPROVAL EXPIRES: _____ PW# _____

INTERSTATE 5

ALL VOLUNTEER VEGETATION ON EXISTING SLOPE WILL BE REMOVED. SLOPE TO BE STABILIZED WITH GEOTEXTILE AND NEW GROUNDCOVER PLANTINGS

RETAIN EXISTING VEGETATION IN REGIONAL STORMWATER DITCH
NEW MOUNDING GROUNDCOVER ON LOWER PORTION OF SLOPE



PRELIMINARY PLANT SCHEDULE

SYMBOL	QTY*	BOTANICAL NAME	COMMON NAME	SIZE	SPACING (NOTES)
	9	STREET TREE** <i>Acer platanoides</i> <i>Liquidambar styraciflua</i> <i>Pyrus calleryana</i> <i>Acer rubrum</i>	'Emerald Queen' Maple American Sweetgum Flowering Pear Red Sunset Maple	2.0" CAL. MIN.	B&B/cont.
	9	ORNAMENTAL ACCENT TREE <i>Fagus sylvatica 'Pendula'</i> <i>Malus spp.</i> <i>Acer palmatum</i> <i>Cercidiphyllum japonicum</i>	Weeping Beech Flowering Crabapple Japanese Maple Katsura Tree	1.5" CAL. MIN.	B&B/cont.
	37	NARROW EVERGREEN TREE <i>Chamaecyparis nootkatensis</i> <i>Pinus leucodermis</i>	Alaskan Weeping Cedar Bosnian Pine	7-8' HT. MIN.	B&B/cont.
		MEDIUM GROWING SHRUBS <i>Nandina domestica</i> <i>Prunus laurocerasus</i> <i>Leucothoe</i> <i>Euonymus alata 'Compacta'</i>	Heavenly Bamboo 'Otto Luyken' Laurel Leucothoe Dwarf Burning Bush		
		LOW GROWING SHRUBS <i>Nandina domestica</i> <i>Azalea spp.</i> <i>Spirea x. bumalda</i> <i>Pennisetum 'Rubrum'</i> <i>Hemmerocallis x. 'Malja'</i> <i>Sarcococca ruscifolia</i> <i>Erica carnea 'Springwood Pink'</i>	Harbor Dwarf Nandina Azalea Gold Mound Spirea Dwarf Fountain Grass Golden Zebra Daylily Sweet Box Spring Heath		
		SPREADING GROUNDCOVERS <i>Viburnum davidii</i> <i>Euonymus fortunei</i> <i>Archostaphylos uva-ursi</i> <i>Cotoneaster dammerii</i>	David's Viburnum 'Emerald Gaiety' Euonymus Kinnikinnick Bearberry		
		MOUNDING GROUNDCOVER <i>Rosa x 'NOA97400A'</i> <i>Rosa rugosa</i>	Flower Carpet Rose Rugosa rose		
		SEEDING TURF AREA			

PRELIMINARY PLANTING NOTES

* PRELIMINARY QUANTITY BASED ON MINIMUM CODE REQUIREMENTS. THE FINAL LANDSCAPE PLAN SHALL BE REVIEWED AND APPROVED ILLUSTRATING THE ACTUAL LANDSCAPE PLANT MATERIALS PROPOSED FOR CONSTRUCTION.

** STREET TREE SELECTION SUBJECT TO PUBLIC WORKS STANDARDS. FINAL SELECTION SHALL HAVE CHARACTERISTICS SUITABLE FOR CAR DISPLAY.

- FINAL LANDSCAPE PLANTING PLANS SHALL ILLUSTRATE LANDSCAPE INSTALLATION DETAILS & SPECIFICATIONS INCLUDING SOIL PREPARATION AND AMENDMENTS.
- ALL LANDSCAPED AREAS SHALL BE IRRIGATED WITH AN AUTOMATIC IN-GROUND SPRINKLER SYSTEM WITH SOLID STATE PROGRAMMABLE CONTROLLER.

AREA TAKE OFF ESTIMATE:
SHRUB/GC AREA: 57,365 S.F. ORNAMENTAL PLANTINGS INCLUDING SLOPES
2,390 S.F. PARKING ISLANDS
LAWN AREA (EST): 14,110 S.F. FRONTAGE

TOTAL LANDSCAPE AREA TO PREP: 73,865 SQUARE FEET
EDGING TYPE: (TO BE DETERMINED)

DESIGNED BY: CLA	REVISION
DRAWN BY: CA	NO.
CHECKED BY: CA	DATE
DATE: 4/23/2021	
SCALE: 1" = 30'	

AWESOME
CHEVROLET/BUICK
2050 NW LOUISIANA AVE.
CHEHALIS, WA 98532

CITY OF CHEHALIS, WA.

PRELIMINARY LANDSCAPE PLAN

RB Engineering
DESIGN → PERMIT → MANAGE
P.O. Box 923
CHEHALIS, WA 98532
OFF: (360) 740-8819
EMAIL: ChePro@RBEngineers.com

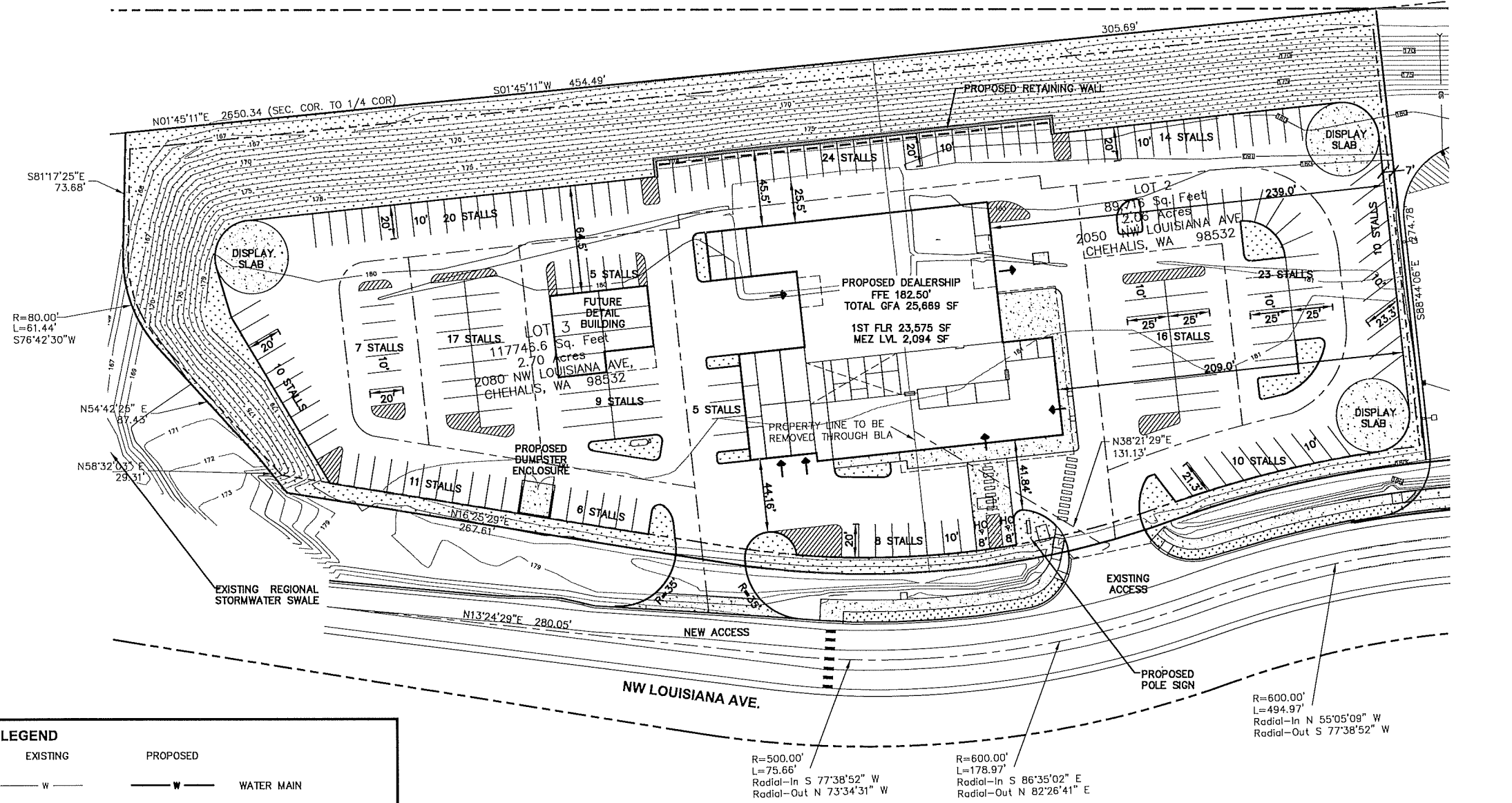
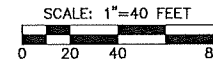
811 Know what's below. Call 811 before you dig.

JOB NUMBER
20125
DRAWING NAME
20125_PLSP
L1.1
1 OF 1

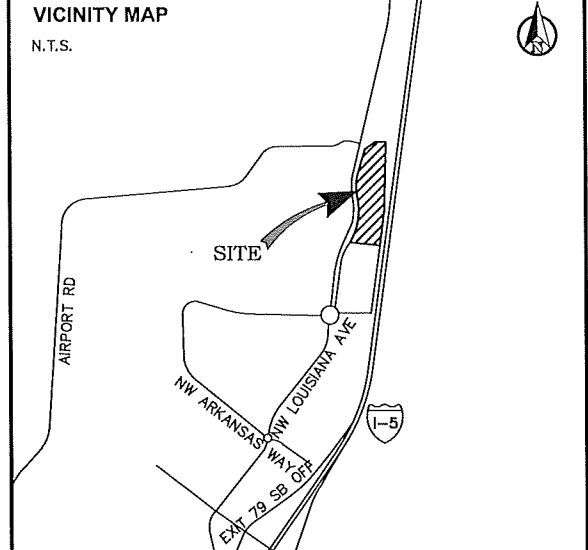
AWESOME CHEVROLET/BUICK

SECTION 19, TOWNSHIP 14 NORTH, RANGE 02 WEST, W.M.
LEWIS COUNTY, WASHINGTON

INTERSTATE 5



LEGEND		
EXISTING	PROPOSED	
— W —	— W —	WATER MAIN
— SS —	— SS —	SANITARY SEWER MAIN
— FM —	— FM —	FORCE MAIN
— SD —	— SD —	STORM MAIN
— RD —	— RD —	ROOF DRAIN
— — —	— W —	FOOTING DRAIN
— G —	— G —	GAS LINE
— UGP —	— UGP —	POWER LINE
— T —	— T —	TELEPHONE LINE
— TV —	— CATV —	CABLE TV LINE
— — —	— — —	ROADWAY CENTERLINE
— — —	— — —	RIGHT-OF-WAY LINE
— — —	— — —	EASEMENT LINE
— — —	— — —	FRONT/BACK OF CURB
— — —	— — —	EDGE OF GRAVEL SHOULDER
— EP —	— EP —	EDGE OF PAVEMENT



PROJECT INFORMATION	
APPLICANT:	HJP INVESTMENTS, HEIDI PEHL PO BOX 1227 CHEHALIS, WA 98532 HEIDIPEHL@SCARS.COM
PARCEL NOS:	0216120110-21, 22, 23,
SITE ADDRESS:	2050 & 2080 NW LOUISIANA AVE. CHEHALIS, WA 98532
ZONING:	GC - GENERAL COMMERCIAL
SITE AREA:	4.76 ACRES
GRADING ESTIMATE:	4,150 ± CY CUT XXXX ± CY FILL
SOILS:	ALVOR SILTY CLAY LOAM REED SILTY CLAY LOAM
SANITARY SEWER:	CITY OF CHEHALIS
WATER:	CITY OF CHEHALIS
FIRE DISTRICT:	CITY OF CHEHALIS

SHEET INDEX	
C0.1	PRELIMINARY CIVIL COVER SHEET
C1.1	PRELIMINARY GRADING AND DRAINAGE PLAN
C1.2	PRELIMINARY WATER AND SEWER SERVICE PLAN

SURVEY INFORMATION
LEGAL DESCRIPTION
 SECTION 19 TOWNSHIP 14N RANGE 02W PT E2 E2 LT 2
 BLA 3476732
VERTICAL DATUM
 NAVD 88 (NGVD 29 = -3.41 FT)
BASIS OF BEARING
 BEARINGS ARE BASED ON WASH. ST. COORDINATE SYSTEM
 SOUTH ZONE - GRID NORTH - FROM TIES TO NGS AND
 WSDOT MONUMENTS. SECTION AND BOUNDARIES ARE BASED
 ON PREVIOUS SURVEY RECORDED ON THIS PARCEL UNDER
 AUDITOR'S FILE NO. 3235421

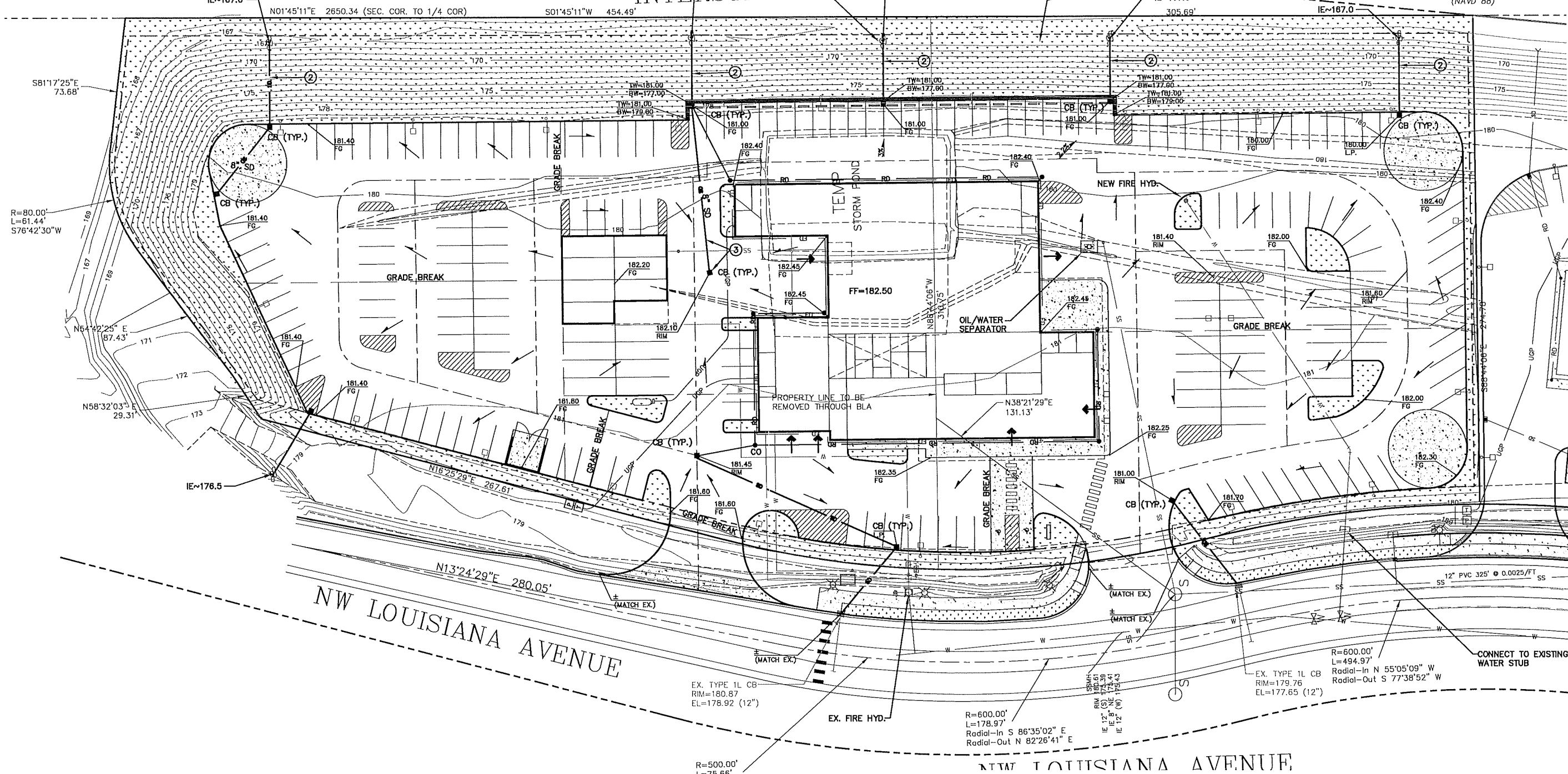
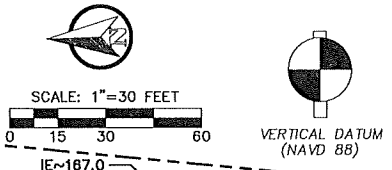
GEOTECHNICAL REPORT
 CONTRACTOR SHALL OBTAIN SITE GEOTECHNICAL REPORT
 PREPARED BY INSIGHT GEOLOGIC. ALL CONSTRUCTION,
 EARTHWORK AND SUBGRADE PREPARATION SHALL COMPLY
 WITH THE REPORT AND IBC STANDARDS.

PARKING SUMMARY	
NEW UNIT DISPLAY:	2
NEW UNIT STORAGE/DISPLAY:	110
USED UNIT DISPLAY:	27
CUSTOMER STALLS:	18
ADA ACCESSIBLE:	2
EMPLOYEE STALLS:	18
ELECT. VEHICLE STA:	5
DETAIL PARKING:	8
SERVICE PARKING:	23
TOTAL EXTERIOR:	213

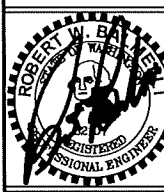
APPROVED FOR CONSTRUCTION
 BY: _____ DATE: _____
 DIRECTOR OF PUBLIC WORKS
 APPROVAL EXPIRES: _____ PW# _____

DESIGNED BY: CLA	REVISION
DRAWN BY: CES	NO. DATE
CHECKED BY: RMB	
DATE: 4/23/2021	
SCALE: 1" = 40'	
AWESOME CHEVROLET/BUICK	
2050 NW LOUISIANA AVE. CHEHALIS, WA 98532	
CITY OF CHEHALIS, WA.	
PRELIMINARY CIVIL COVER SHEET	
RB Engineering DESIGN - PERMIT - MANAGE OFF: (360) 740-8819 P.O. Box 923 CHEHALIS, WA 98532 EMAIL: info@rbengineering.com	
811 Know what's below. Call 811 before you dig.	
JOB NUMBER 20125	DRAWING NAME 20125_COVR
C0.1	
1 OF 3	

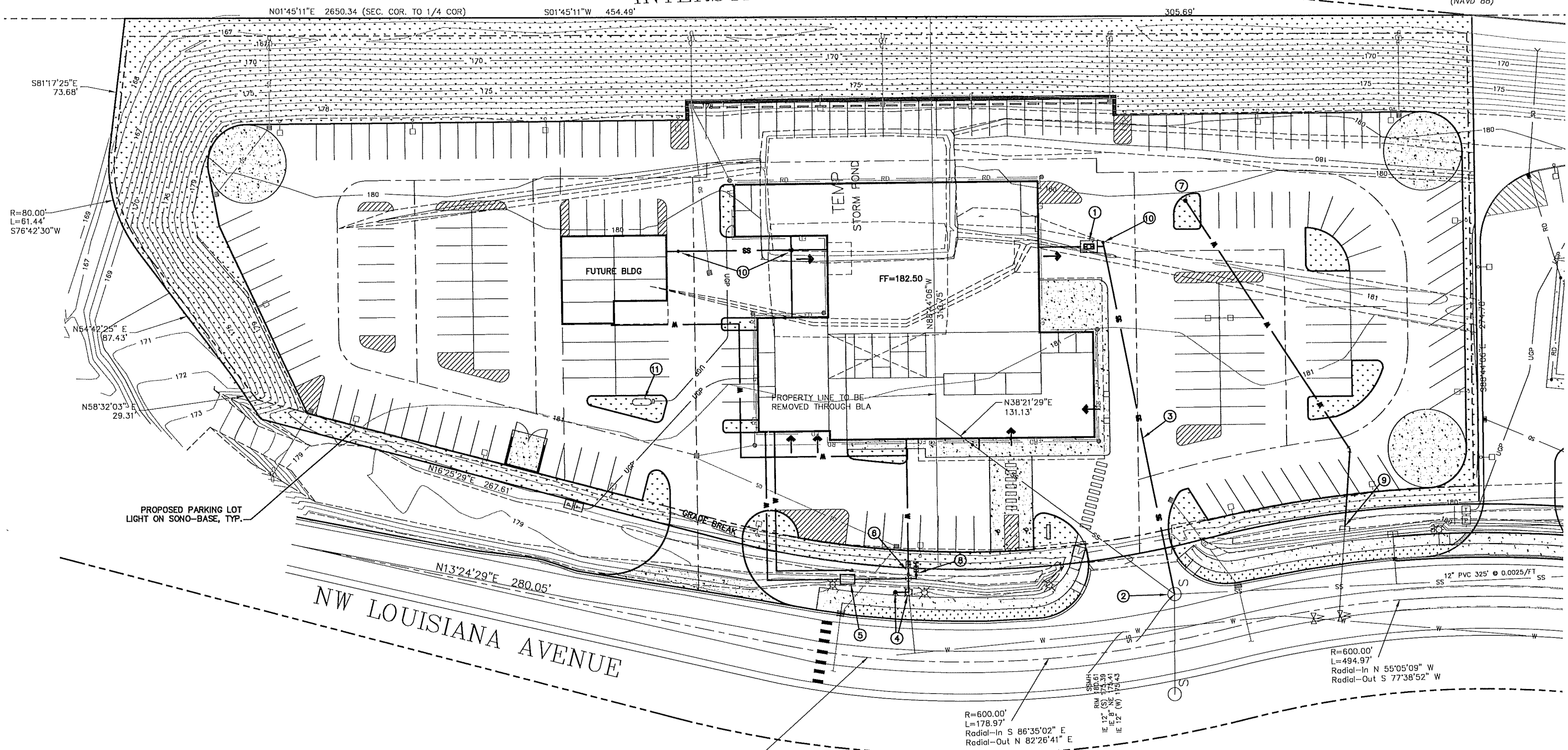
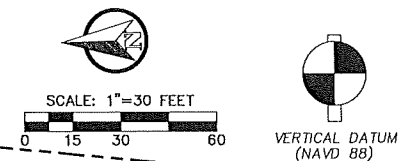
ARMORING AT OUTLETS, TYP.
INTERSTATE 5



- PRELIMINARY CONSTRUCTION NOTES:**
- ① EXISTING BIOFILTRATION SWALE, DRAINS NORTH TO AIRPORT LAKE.
 - ② PROPOSED STORM DRAINAGE LINES AND CATCH BASINS, DISCHARGE TO SWALE.
 - ③ PROPOSED ONSITE STORM DRAINAGE PIPING AND CATCH BASINS.

NO. DATE REVISION	DESIGNED BY: CLA DRAWN BY: CES CHECKED BY: RMB DATE: 4/23/2021 SCALE: 1" = 30' WA. AWESOME CHEVROLET/BUICK 2060 NW LOUISIANA AVE. CHEHALIS, WA 98532 CITY OF CHEHALIS, WA. PRELIMINARY GRADING AND DRAINAGE PLAN 
RB Engineering DESIGN → PERMIT → MANAGE P.O. Box 923 CHEHALIS, WA 98532 OFF: (360) 740-8515 EMAIL: info@rbengineering.com	
811 Know what's below. Call 811 before you dig.	
APPROVED FOR CONSTRUCTION BY: _____ DATE: _____ DIRECTOR OF PUBLIC WORKS APPROVAL EXPIRES: _____ PW# _____	
JOB NUMBER: 20125 DRAWING NAME: 20125_GDPL C1.1 2 OF 3	

INTERSTATE 5



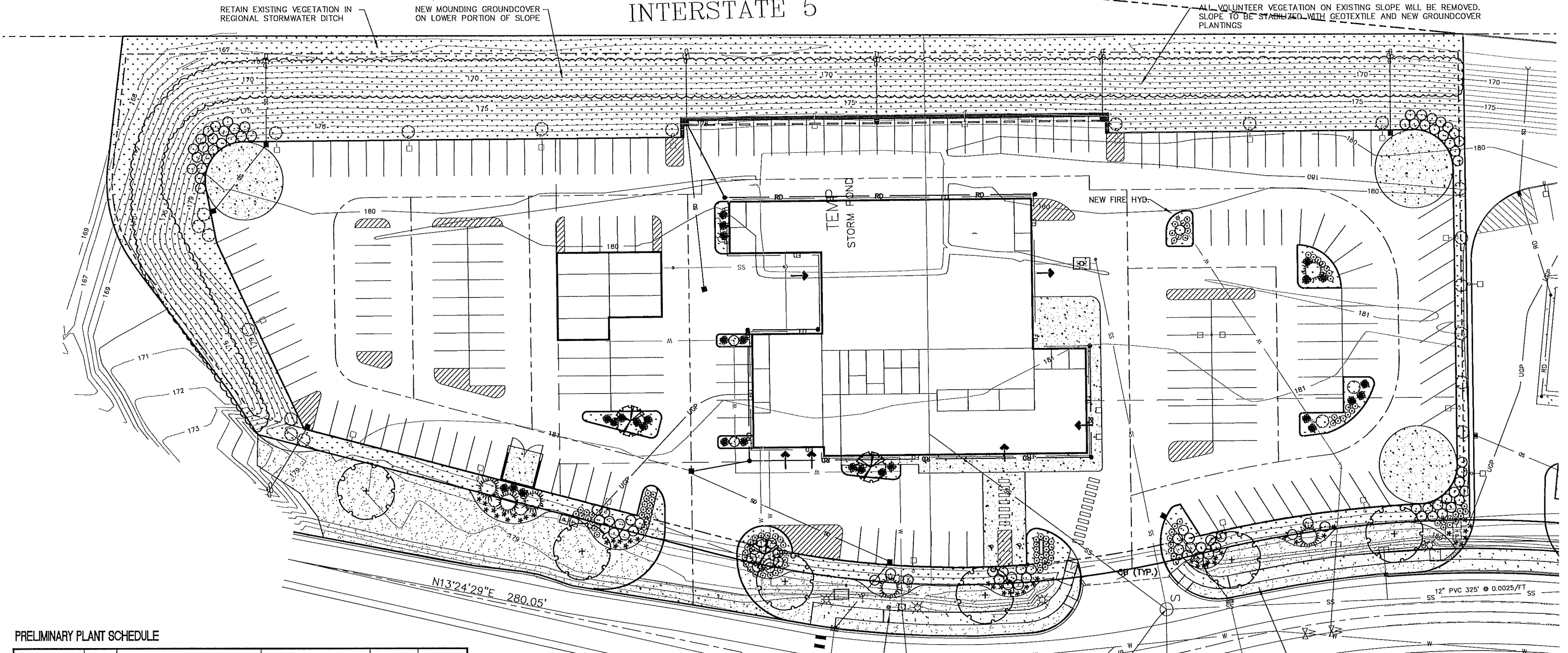
PRELIMINARY CONSTRUCTION NOTES:

- ① PROPOSED OIL WATER SEPARATOR FOR BUILDING DRAINS AND TIRE WASH FACILITY.
- ② PROPOSED NEW MANHOLE CONNECTION.
- ③ PROPOSED NEW SANITARY SEWER LATERAL CONNECTION TO EXISTING MANHOLE FOR BUILDING SANITARY SEWER PLUMBING.
- ④ RELOCATE EXISTING FIRE HYDRANT TO PROVIDE FIRE LINE SERVICE TO BUILDING.
- ⑤ PROPOSED NEW FIRE LINE BACK FLOW DOUBLE DETECTOR CHECK VALVE VAULT AND FIRE DEPARTMENT CONNECTION.
- ⑥ PROPOSED NEW DOMESTIC WATER SERVICE AND REDUCED PRESSURE BACKFLOW ASSEMBLY.
- ⑦ PROPOSED NEW FIRE HYDRANT.
- ⑧ PROPOSED IRRIGATION METER WITH DCVA
- ⑨ WATER CONNECTION FOR FIRE HYDRANT.
- ⑩ SEWER CLEAN OUT
- ⑪ PROPOSED U/G LIQUID PROPANE STORAGE

APPROVED FOR CONSTRUCTION
 BY: _____ DATE: _____
 DIRECTOR OF PUBLIC WORKS
 APPROVAL EXPIRES: _____ PWF

NO. DATE REVISION	DESIGNED BY: CL DRAWN BY: CES CHECKED BY: RWB DATE: 4/23/2021 SCALE: 1" = 30'
AWESOME CHEVROLET/BUICK 2060 NW LOUISIANA AVE. CHEHALIS, WA 98532	
PRELIMINARY WATER AND SEWER PLAN	
RB Engineering DESIGN → PERMIT → MANAGE OFF: (360) 746-8919 P.O. Box 923 CHEHALIS, WA 98532 EMAIL: info@rbengineering.com	
811 Know what's below. Call 811 before you dig.	
JOB NUMBER: 20125 DRAWING NAME: 20125_WSPL C1.2 3 OF 3	

INTERSTATE 5



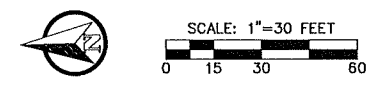
PRELIMINARY PLANT SCHEDULE

SYMBOL	QTY*	BOTANICAL NAME	COMMON NAME	SIZE	SPACING (NOTES)
	9	STREET TREE** <i>Acer platanoides</i> <i>Liquidambar styraciflua</i> <i>Pyrus calleryana</i> <i>Acer rubrum</i>	'Emerald Queen' Maple American Sweetgum Flowering Pear Red Sunset Maple	2.0" CAL. MIN.	B&B/cont.
	9	ORNAMENTAL ACCENT TREE <i>Fagus sylvatica 'Pendula'</i> <i>Malus spp.</i> <i>Acer palmatum</i> <i>Cercidiphyllum japonicum</i>	Weeping Beech Flowering Crabapple Japanese Maple Katsura Tree	1.5" CAL. MIN.	B&B/cont.
	37	NARROW EVERGREEN TREE <i>Chamaecyparis nootkatensis</i> <i>Pinus leucodermis</i>	Alaskan Weeping Cedar Bosnian Pine	7'-8" HT. MIN.	B&B/cont.
		MEDIUM GROWING SHRUBS <i>Nandina domestica</i> <i>Prunus laurocerasus</i> <i>Leucothoe hyb.</i> <i>Euonymus alata 'Compacta'</i>	Heavenly Bamboo 'Otto Luyken' Laurel Leucothoe Dwarf Burning Bush		
		LOW GROWING SHRUBS <i>Nandina domestica</i> <i>Azalea</i> <i>Spiraea x. bumalda</i> <i>Pennisetum 'Rubrum'</i> <i>Hemmercallis x. 'Malja'</i> <i>Sarcococca ruscifolia</i> <i>Erica cornea 'Springwood Pink'</i>	Harbor Dwarf Nandina Azalea spp. Gold Mound Spirea Dwarf Fountain Grass Golden Zebra Daylily Sweet Box Spring Heath		
		SPREADING GROUNDCOVERS <i>Viburnum davidii</i> <i>Euonymus fortunei</i> <i>Archtothaphyas uva-ursi</i> <i>Cotoneaster dammerii</i>	David's Viburnum 'Emerald Gaiety' Euonymus Kinnikinnick Bearberry		
		MOUNDING GROUNDCOVER <i>Rosa x 'NOA97400A'</i> <i>Rosa rugosa</i>	Flower Carpet Rose Rugosa rose		
		SEEDING TURF AREA			

PRELIMINARY PLANTING NOTES

- * PRELIMINARY QUANTITY BASED ON MINIMUM CODE REQUIREMENTS. THE FINAL LANDSCAPE PLAN SHALL BE REVIEWED AND APPROVED ILLUSTRATING THE ACTUAL LANDSCAPE PLANT MATERIALS PROPOSED FOR CONSTRUCTION.
 - ** STREET TREE SELECTION SUBJECT TO PUBLIC WORKS STANDARDS. FINAL SELECTION SHALL HAVE CHARACTERISTICS SUITABLE FOR CAR DISPLAY.
- FINAL LANDSCAPE PLANTING PLANS SHALL ILLUSTRATE LANDSCAPE INSTALLATION DETAILS & SPECIFICATIONS INCLUDING SOIL PREPARATION AND AMENDMENTS.
 - ALL LANDSCAPED AREAS SHALL BE IRRIGATED WITH AN AUTOMATIC IN-GROUND SPRINKLER SYSTEM WITH SOLID STATE PROGRAMMABLE CONTROLLER.
- AREA TAKE OFF ESTIMATE:
 SHRUB/GC AREA: 57,365 S.F. ORNAMENTAL PLANTINGS INCLUDING SLOPES
 2,390 S.F. PARKING ISLANDS
 LAWN AREA (EST): 14,110 S.F. FRONTAGE
- TOTAL LANDSCAPE AREA TO PREP: 73,865 SQUARE FEET
 EDGING TYPE: (TO BE DETERMINED)

NW LOUISIANA AVENUE



DESIGNED BY: CLA	REVISION
DRAWN BY: CA	NOI DATE
CHECKED BY: CA	
DATE: 4/23/2021	
SCALE: 1" = 30'	

AWESOME CHEVROLET/BUICK
 2050 NW LOUISIANA AVE.
 CHEHALIS, WA 98532

CITY OF CHEHALIS, WA.

PRELIMINARY LANDSCAPE PLAN

RB Engineering
 DESIGN → PERMIT → MANAGE
 P.O. Box 523
 CHEHALIS, WA 98532
 OFF: (360) 740-8819
 EMAIL: info@rbengineers.com

811 Know what's below. Call 811 before you dig.

JOB NUMBER: 20125
 DRAWING NAME: 20125_PLSP
L1.1
 1 OF 1