

LEWIS COUNTY COMMUNITY DEVELOPMENT - FACADE IMPROVEMENT

SECTION 32, TOWNSHIP 14 NORTH, RANGE 02 WEST, W.M.

LEWIS COUNTY, WA

LANDSCAPE SET SHEET INDEX

L-100	COVER SHEET
L-101	OVERALL LANDSCAPE PLAN
L-102	LANDSCAPE PLAN
L-103	IRRIGATION PLAN
L-104	LARGE-SCALE PLANS - SITE DETAILS
L-105	LANDSCAPE DETAILS
L-106	IRRIGATION DETAILS

PROJECT / LANDSCAPE DATA

PROJECT ADDRESS: -

PARCEL NO: -

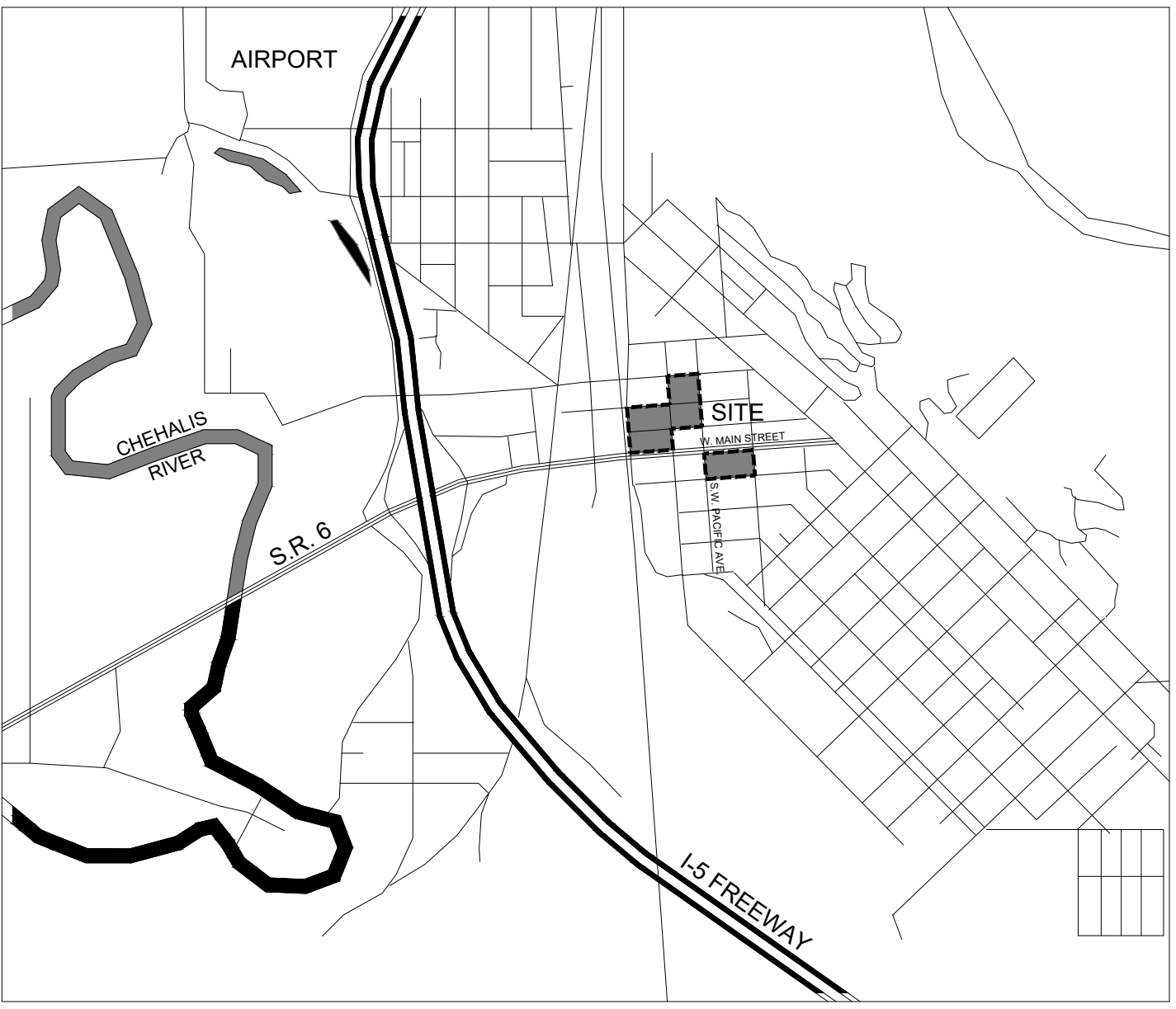
CURRENT ZONING: -

PROPOSED USE: -

SITE AREA: -

ON-SITE PARKING: -

VICINITY MAP



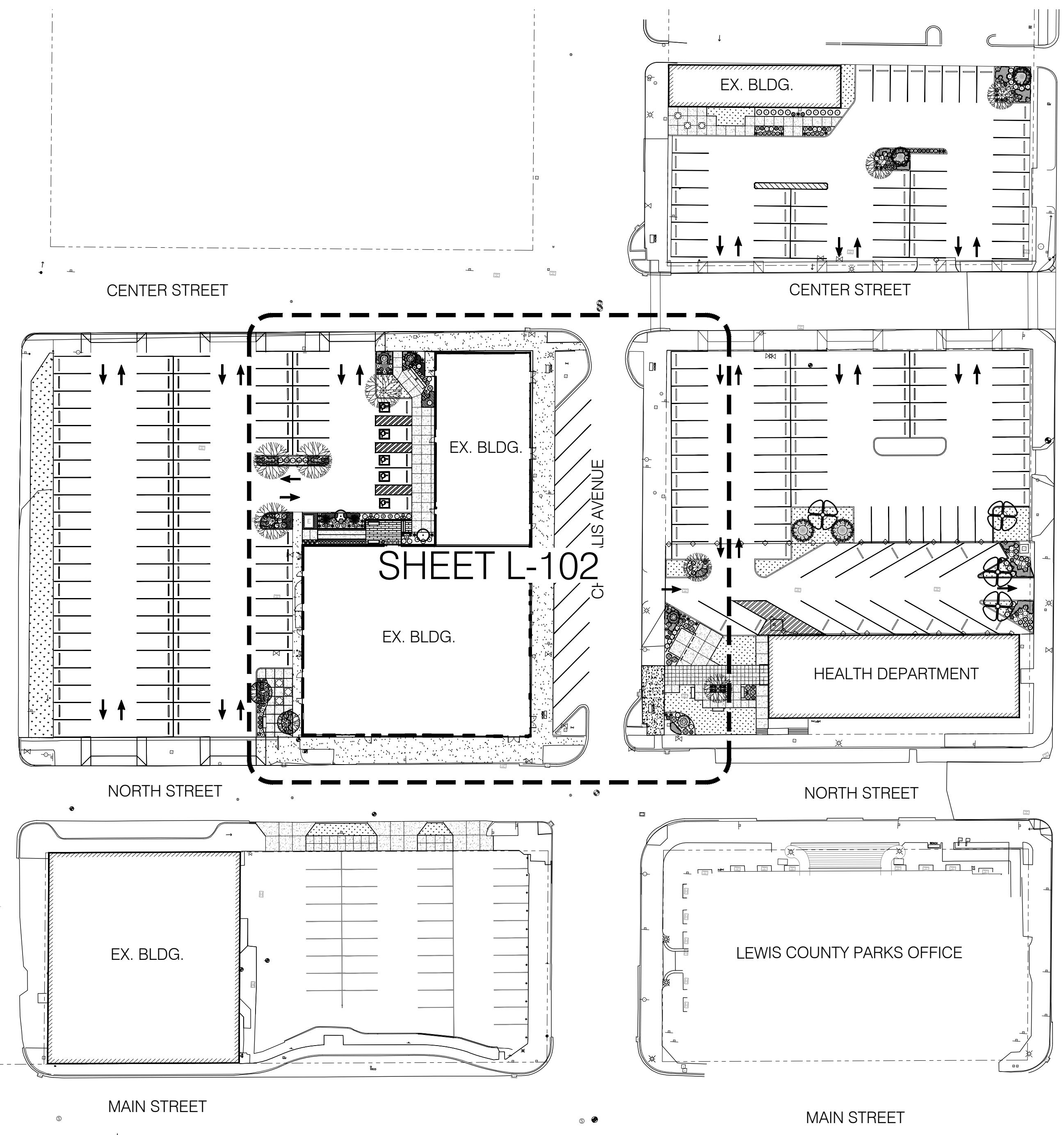
LEWIS COUNTY COMMUNITY DEVELOPMENT FACADE IMPROVEMENT
LEWIS COUNTY FACILITIES DEPARTMENT
 351 NW NORTH STREET, CHEHALIS, WA 98532
 Facilities Department

ORIGINAL SHEET SIZE = 24 x 36
HALF SIZE REDUCTIONS = 11 x 17

REVISIONS:

DATE: 06-21-2021
PERMIT TI SET

SHEET NO:
L-100
COVER SHEET -
BLDG 1



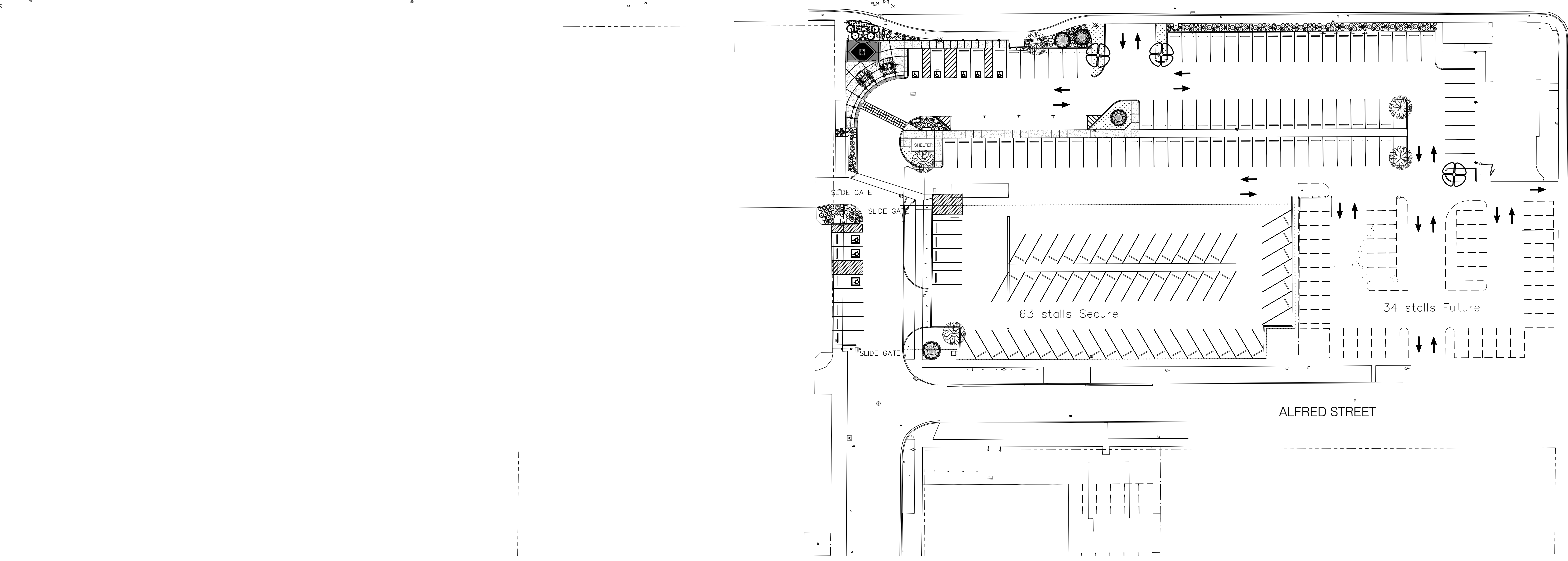
PLANT PALETTE

TREES	GRAPHIC	ABBR.	BOTANICAL NAME	COMMON NAME	SIZE	QTY.	SPACING	DROUGHT	COMMENTS
	•	AP	ACER PALMATUM 'VILLA TARANTO'	VILLA TARANTO MAPLE	5.0'(h)	2	N/A		UPRIGHT TREE FORM
	•	CN	CHAMAECYPARIS NOOTKATENSIS 'PENDULA'	WEeping ALASKA CEDAR	8.0'(h)	2	N/A		MATCH SIZE & FORM
	•	PO	PICEA OMORIKA 'RIVERSIDE'	RIVERSIDE SPRUCE	5.0'(h)	2	N/A		MATCH SIZE & FORM
	•	PS	PRUNUS SARGENTII 'COLUMNARIS'	COLUMNAR SARGENT'S CHERRY	1.75" cal	2	N/A		6.0' PEDESTRIAN CLEARANCE, MATCH SIZE & FORM
	•	NS	NYSSA SYLVATICA 'WILDFIRE'	WILDFIRE SOURGUM	2.00" cal.	4	N/A		6.0' VEHICULAR CLEARANCE

SHRUBS	GRAPHIC	ABBR.	BOTANICAL NAME	COMMON NAME	SIZE	QTY.	SPACING	DROUGHT	COMMENTS
	•	BS	BUXUS SEMPVIRENS 'SUFFRUTICOSA'	DWARF ENGLISH BOXWOOD	2 gal.	6	-		MATCH SIZE & FORM IN ROW
	•	BT	BERBERIS THUNBERGIANA 'CONCORDE'	CONCORDE BARBERRY	2 gal.	10	-		-
	•	EA	EUONYMUS ALATA 'COMPACTA'	DWARF BURNING BUSH	5 gal.	6	-		-
	•	HM	HEUCHERA 'LIME MARMALADE'	LIME MARMALADE 'CORAL BELLS'	1 gal.	15	-		-
	•	ND	NANDINA DOMESTICA 'GULFSTREAM'	GULFSTREAM HEAVENLY BAMBOO	5 gal.	11	-		-
	•	PL	PRUNUS LAURACERACUS 'OTTO LUYKEN'	OTTO LUYKEN LAUREL	5 gal.	5	-		-
	•	PM	PINUS MUGO 'SHERWOOD COMPACT'	DWARF MUGO PINE	18"(w)	12	-		SELECT GOOD PIN-CUSHION FORM
	•	SH	SARCOCOCCA HOOKERI 'HUMILIS'	SWEETBOX	5 gal.	3	-		-
	•	SJ	SPIRAEA JAPONICA 'MAGIC CARPET'	MAGIC CARPET SPIRAEA	5 gal.	10	-		-
	•	TC	TAXUS CUSPIDATA 'NANA'	DWARF YEW	2 gal.	12	-		MATH SIZE IN CLUSTERS

GROUND COVER	GRAPHIC	ABBR.	BOTANICAL NAME	COMMON NAME	SIZE	QTY.	SPACING	DROUGHT	COMMENTS
	•	AR	AJUGA REPTANS 'PINK LIGHTNING'	PINK LIGHTNING BUGLEWEED	1 gal.	89 s.f.	24" o.c.		TRIANGULAR SPACING
	•	AU	ARCTOSTAPHYLOS UVA 'VANCOUVER JADE'	VANCOUVER JADE KINNIKINICK	1 gal.	71 s.f.	18" o.c.		TRIANGULAR SPACING
	•	SM	SEDUM MAKINOI 'OGON'	OGON STONECROP	1 gal.	88 s.f.	18" o.c.		TRIANGULAR SPACING

ORNAMENTAL GRASSES, VINES, ETC.	GRAPHIC	ABBR.	BOTANICAL NAME	COMMON NAME	SIZE	QTY.	SPACING	DROUGHT	COMMENTS
	•	CA	CALAMAGROSTIS ACUTI 'KARL FOERSTER'	K. FOERSTER FEATHER REED GRASS	1 gal.	12	-		FULL TUFT
	•	HA	HAKONECHLORA MACRA 'ALL GOLD'	ALL GOLD JAPANESE FOREST GRASS	1 gal.	9	-		FULL TUFT
	•	LM	LIRIOPE MUSCARI 'SILVERY SUNPROOF'	SILVERY SUNPROOF LILYTURF	1 gal.	13	-		FULL TUFT
	•	RF	RUDBECKIA FUGILDA 'GOLDSTRUM'	GOLDSTRUM BLACK-EYED SUSAN	1 gal.	10	-		

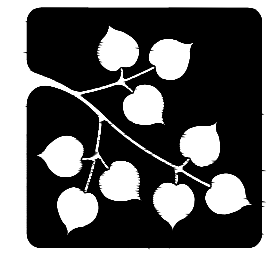


LEWIS COUNTY COMMUNITY DEVELOPMENT FACADE IMPROVEMENT

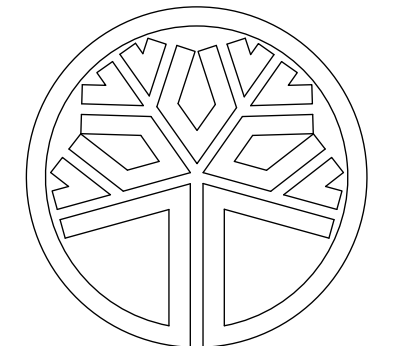
LEWIS COUNTY FACILITIES DEPARTMENT

351 NW NORTH STREET, CHEHALIS, WA 98532
Facilities Department

DESIGN CONSULTANT



ASPEN
LANDSCAPE ARCHITECTURE
SITE PLANNING
ASPEN DESIGN GROUP
P.O. BOX 2394
ISSAQUAH, WA 98027
(425) 292-9645 (PHONE)
CONTACT: PAUL J. DIX

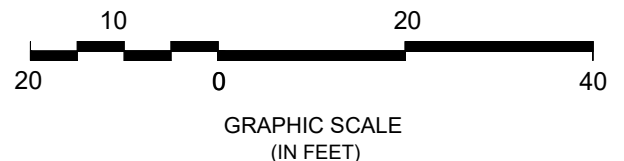


STATE OF WASHINGTON
REGISTERED LANDSCAPE ARCHITECT
PAUL J. DIX
CERTIFICATE NO. 620
(NOT FOR CONSTRUCTION)

SHEET TITLE

OVERALL LANDSCAPE PLAN
SCALE: 1" = 40.0'

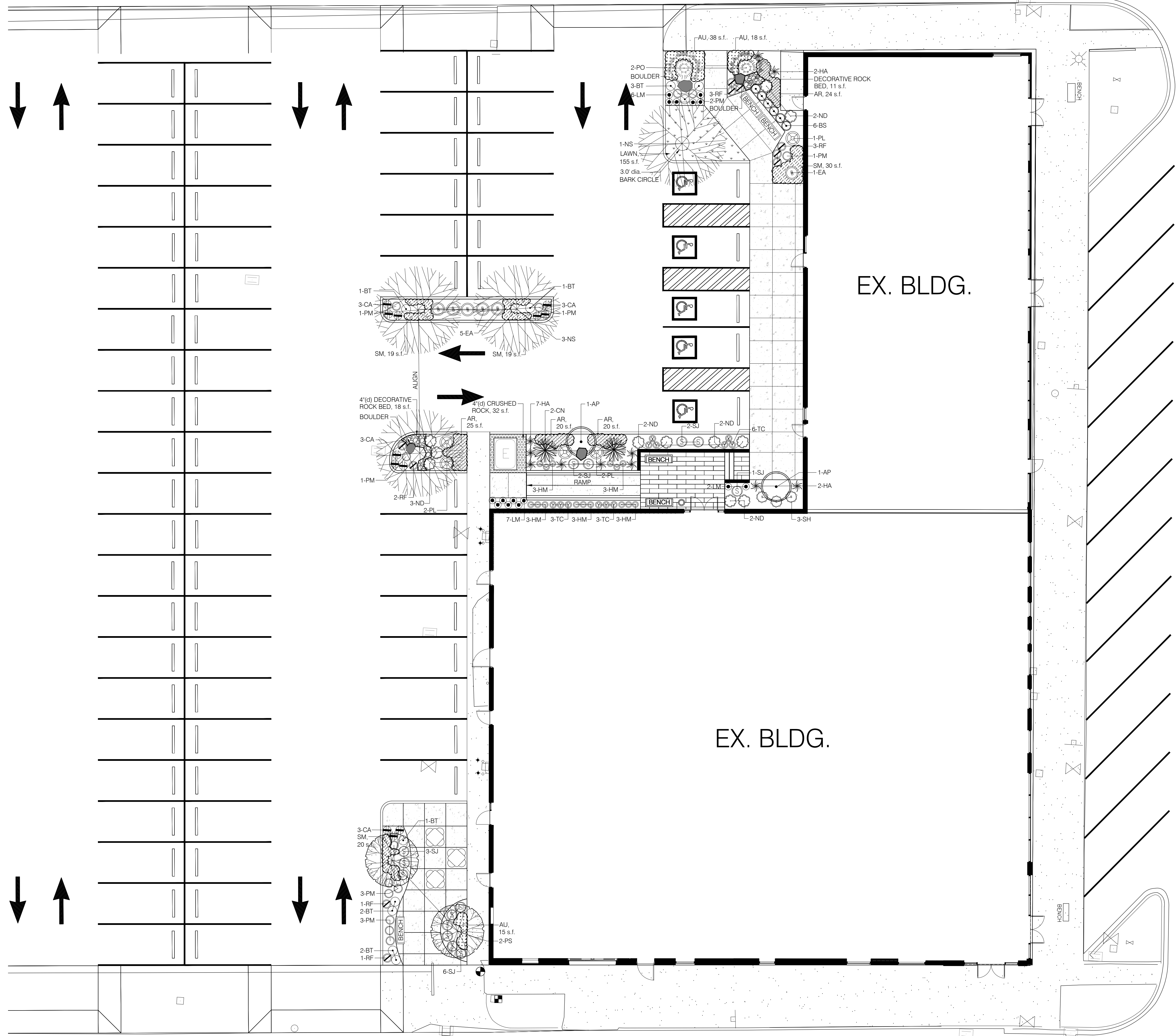
NORTH



GRAPHIC SCALE (IN FEET)

ORIGINAL SHEET SIZE = 24 x 36
HALF SIZE REDUCTIONS = 11 x 17

DATE: 06-21-2021
PERMIT T1 SET
SHEET NO.
L-101
ENLARGED SLAB PLAN - BLDG 1



GENERAL LANDSCAPE NOTES

- Plant material shall conform to guidelines established by the American Nurseryman's Association by the American Standard for Nursery Stock.
- Defective/dead plants shall be replaced w/in 6 months after notification from City w/living plants of equal size to original plant. Plants are under a 1-year warranty from date of Substantial Completion.
- Landscape contractor shall field locate all utility lines prior to the start of construction. The use of on-site utility plans as a part of this contract are available for review.
- All plants shall be balled & burlapped or container grown as specified. No container grown stock will be accepted if deemed to be root-bound. All plastic root wrapping material shall be removed. No bare root stock will be accepted unless submitted in writing for approval.
- Plants shall originate from established nurseries located w/in region of project. Plants that are not available in size specified or quantity may be secured from outside the region if submitted for review and approval.
- All plants shall meet the minimum size specified on the plan. One plant from each grouping shall be labeled, indicating the plant name and size. Tags shall then be removed after review.
- All plants shall be sprayed w/ia anti-desiccant w/in the first 24 hours.
- All plants shall be installed per the planting details. Alternate staking methods may be proposed for review and approval.
- Stockpile plant material upon delivery to the site in a shady location, embedded in sawdust or mulch. Stockpile all plants near a source of water - water at least once a day to maintain healthy plant stock.
- A pre & post-emergent herbicide shall be applied except at Storm Swale and Street Trees. Herbicide shall be Surflan A.S. tank-mixed w/Roundup (4 qt's / acre. Adhere to all product manufacturer's directions in addition to all environmental regulations. Do not apply in areas that drain directly to critical sensitive areas. Do not apply when wind speed exceeds 5 mph.
- An insecticide and fungicide application shall be performed w/ type to be selected by contractor and submitted in writing for review & approval.
- Planting beds shall have a mix of 2"(d) layer of medium-ground bark, or gravel rock mulch where indicated. Rake beds smooth. Tamp-down areas adjacent to conc. pads/walks to compact, then add additional bark to 1/4"-1/2" below finish grade of conc. surface, (where occurring)
- Install all plant material during favorable weather and within seasonal planting limitations. Do not install plants when daily high temperatures exceed 90° (F) degrees or low temperatures are below 32° (F) degrees. Flowering fruit trees may need to be dug after 3 consecutive nights of temperatures less than 45 (f) degrees in the Fall or as determined by local nursery. Weather data will be from the nearest airport location to project site (Chehalis - Centralia Airport)
- Apply fertilizer tablets as indicated in the following table:

1 gallon	= 2 tablets
2-5 gallon	= 3 tablets
1.5" cal. - 2.0" cal.	= 6 tablets
2.0" cal. - 4.0" cal.	= 8 tablets
6.0" - 8.0" + high	= 7 tablets
- Lack of maintenance shall constitute a violation of local Municipal Code.
- Landscaped areas on private property shall be reasonably maintained by Owner or Lessee of the property as to pruning, watering or other requirements to create an attractive, safe appearance for development. Landscape Contractor shall submit a "Maintenance Manual" that will identify weekly, monthly, annual & biennial maintenance regimes.
- On-site tree locations that are 4' or less to a utility structure, pipe, curb sidewalk or asphalt, a root barrier panel shall be added on the side of the root ball that is closest to item that is to be protected. Barriers shall be Deep Root UB-24-2 24"(w) x 24"(d) ribbed panels w/intermittent panel breaks as needed to allow groundwater to flow freely and not oversaturate rootball. Place root barrier panels in trench with vertical ribs facing toward rootball and align in a straight fashion. Keep top of root barrier's double-top edge at least 1/2" above finish grade.
- Landscape Contractor shall provide watering of plants every other day after installation for 2 weeks. Thereafter, Owner is responsible to hire a Landscape Maintenance firm to maintain a healthy landscape.
- Construct water saucers at each large shrub & tree location to assist in capturing rainwater toward root zone. Add Soil-Moist polymers at plant pits at a rate recommended by manufacturer.



KMB Project # J2037C

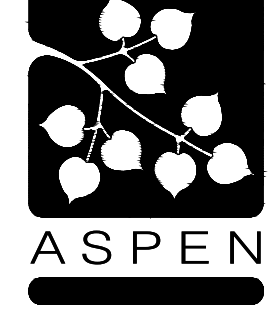
CHEHALIS AVENUE

LEWIS COUNTY COMMUNITY DEVELOPMENT FACADE IMPROVEMENT

LEWIS COUNTY FACILITIES DEPARTMENT

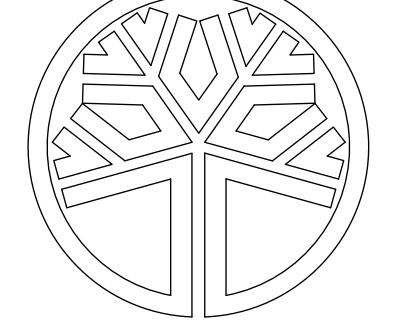
351 NW NORTH STREET, CHEHALIS, WA 98532
Facilities Department

DESIGN CONSULTANT



ASPEN

LANDSCAPE ARCHITECTURE
SITE PLANNING
ASPEN DESIGN GROUP
P.O. BOX 2384
ISSAQUAH, WA 98027
(425) 292-9845 (PHONE)
CONTACT: PAUL J. DIX



STATE OF WASHINGTON
REGISTERED LANDSCAPE ARCHITECT
PAUL J. DIX
CERTIFICATE NO. 620
(NOT FOR CONSTRUCTION)

SHEET TITLE

LANDSCAPE PLAN
SCALE: 1" = 10.0'

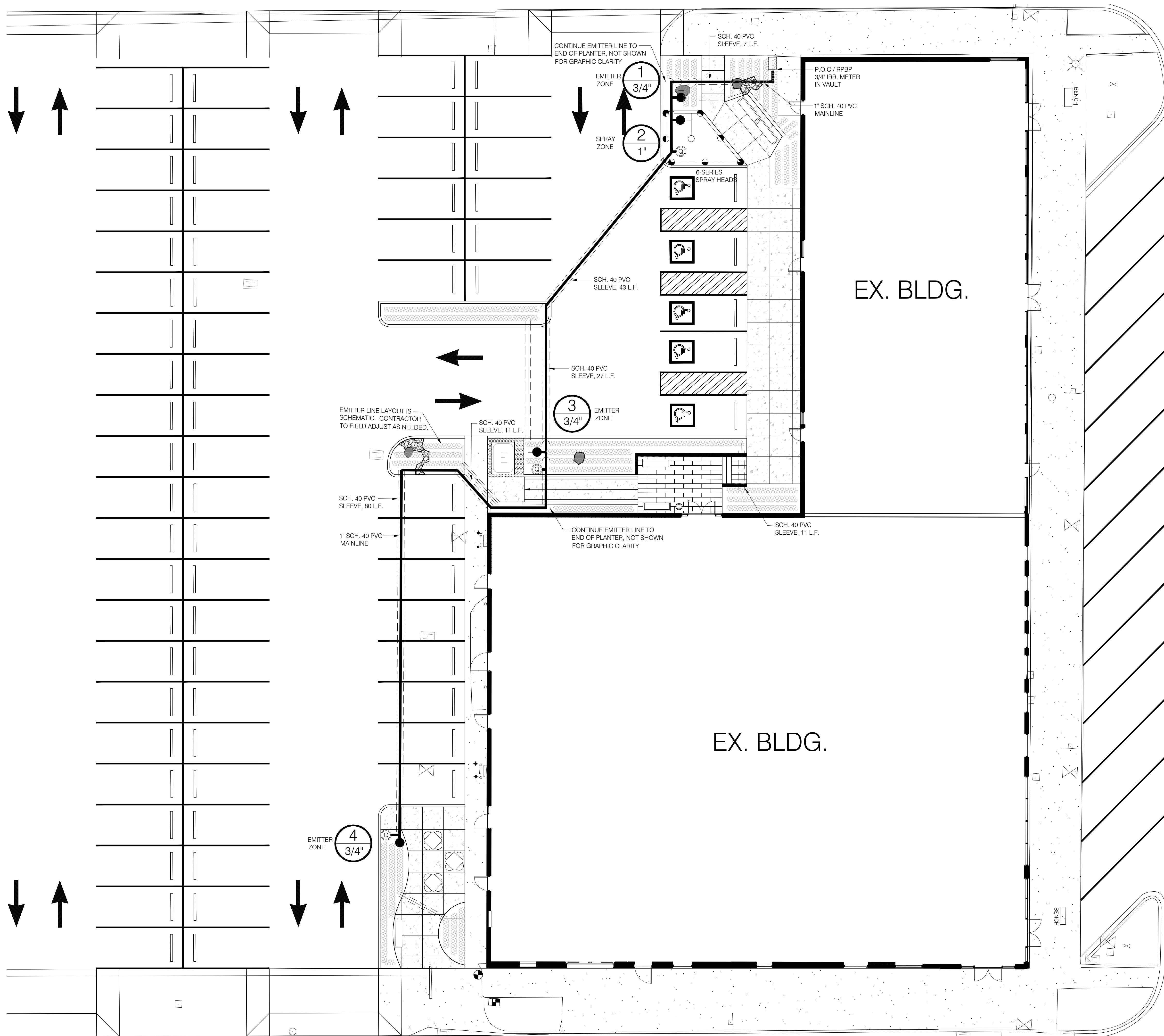
LANDSCAPE PLAN - BLDG 1

DATE: 06-21-2021
PERMIT TI SET
SHEET NO: **L-102**

GRAPHIC SCALE (IN FEET)
0 2 4 6 8 10 12 14 16 18 20

ORIGINAL SHEET SIZE = 24 x 36
HALF SIZE REDUCTIONS = 11 x 17
REVISIONS:

5/24/2021 9:36:21 AM



GENERAL IRRIGATION NOTES

1. This plan is schematic & diagrammatic. The intent of plan is to indicate basic components, locations and scope of proposed irrigation system. Landscape Contractor may make minor field adjustments as needed as a "design-build" effort to successfully complete a fully operational system.
2. The contractor shall assure full and even water coverage to all planting areas, adjustments may be required. Plan components are schematic.
3. An electrical permit must be obtained from the City of Chehalis.
4. The ex. static & operating water pressure shall be verified by the City of Chehalis prior to construction as seasonal pressure variation may occur.
5. Install PVC sleeving as shown at all pavement, sidewalk & wall locations. Place in straight-line segments prior to pavement installation. Extend all sleeving 12" beyond edge of pavement crossing.
6. Adhere to all applicable codes, install all components per manufacturer's instructions. Verify codes, water scheduling & tests w/ City of Chehalis.
7. Install 24-volt wiring (UF 600 volt) direct burial, #14 GA., solid copper wire or strand. Splice in valve boxes only. Route all wiring in 4" elect. conduit to the controller. Run (1) "hot" wire to each valve and (1) common wire through each valve. Provide (1) spare wire at the end of the mainline run. The control wire shall be red, ground wire white & the spare blue.
8. Irrigation controller shall be set for this site to avoid irrigation between the hours of 9:00 AM to 10:00 PM. In addition, irrigation system should not be operated during times of moderate-high wind, excessive or adequate soil moisture or during active precipitation.
9. Provide a minimum of 3 quick coupler valves. The entire system shall be winterized prior to the first freeze by using compressed air. Install a teflon seated ball valve w/ brass body & T-fitting for winterization.
10. The contractor shall inspect, prevent, detect & repair any irrigation system damage which shall include excessive leakage or wear on system. Any future repairs or adjustments shall have the same system components.
11. The irrigation contractor shall provide an irrigation as-built plan submitted on a 24" x 36" mylar plan sheet to the landscape architect for review and approval and to the owner and city for record storage.
12. The irrigation contractor shall provide a written summary of the system design, including any hydraulic calculations, operating instructions and submit to the landscape architect and owner. The irrigation installer shall arrange a site visit with the owner to review operational procedures.

KMB
architects
906 Columbia Street SW, Suite 400
Olympia, Washington 98501
360.352.8883

KMB Project # J2037C

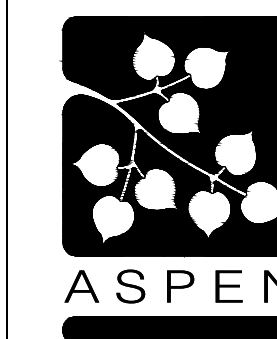
CHEHALIS AVENUE

LEWIS COUNTY COMMUNITY DEVELOPMENT FACADE IMPROVEMENT

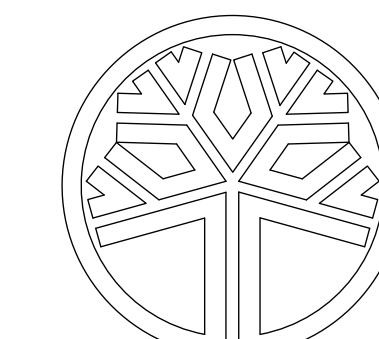
LEWIS COUNTY FACILITIES DEPARTMENT

351 NW NORTH STREET, CHEHALIS, WA 98532
Facilities Department

DESIGN CONSULTANT



LANDSCAPE ARCHITECTURE
SITE PLANNING
ASPEN DESIGN GROUP
P.O. BOX 2384
ISSAQUAH, WA 98027
(425) 292-9845 (PHONE)
CONTACT: PAUL J. DIX



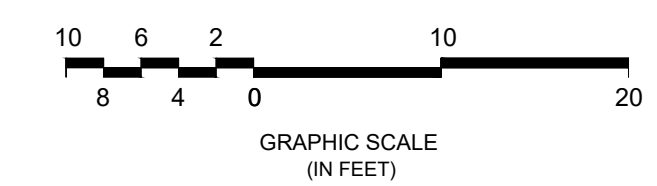
STATE OF WASHINGTON
REGISTERED LANDSCAPE ARCHITECT
PAUL J. DIX
CERTIFICATE NO. 620

(NOT FOR CONSTRUCTION)

SHEET TITLE

IRRIGATION PLAN

SCALE: 1" = 10.0'



ORIGINAL SHEET SIZE = 24 x 36
HALF SIZE REDUCTIONS = 11 x 17

DATE: 06-21-2021

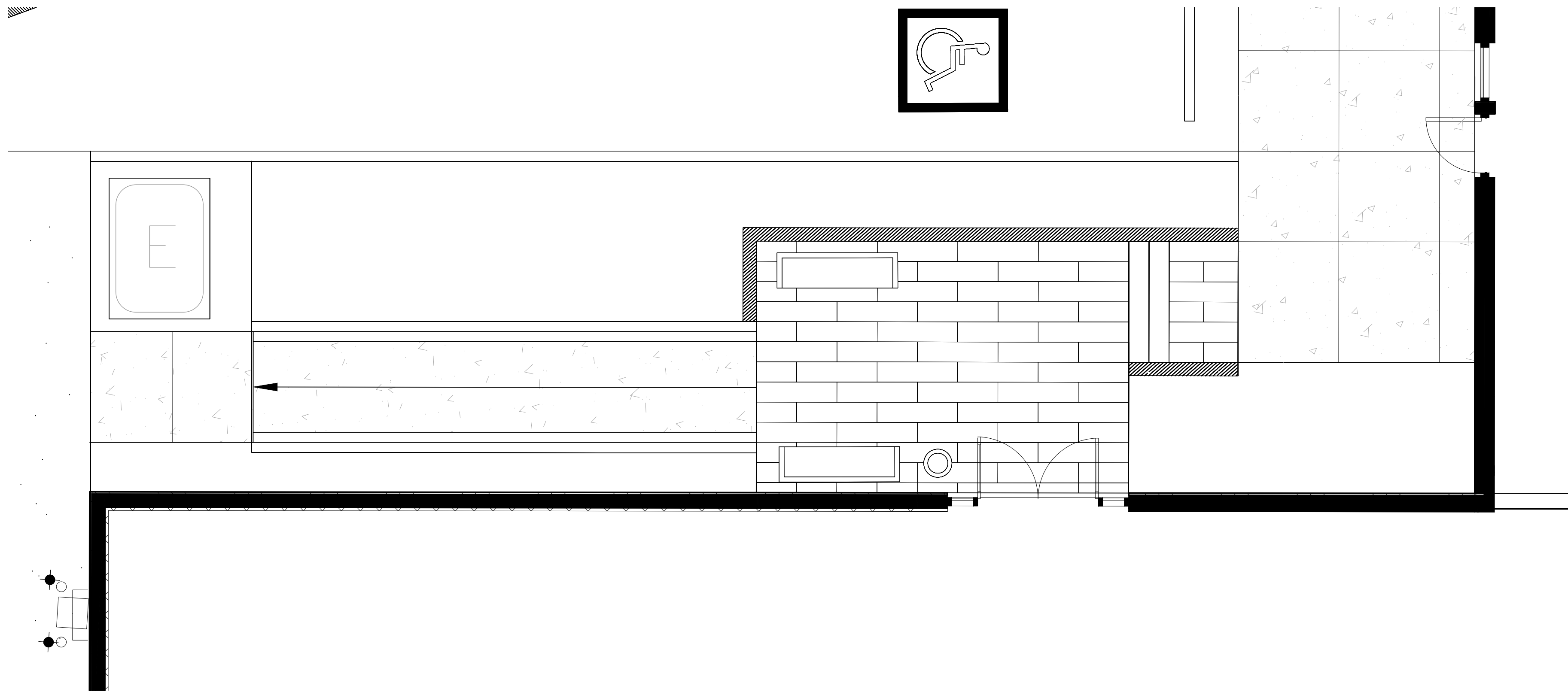
PERMIT SET

SHEET NO.

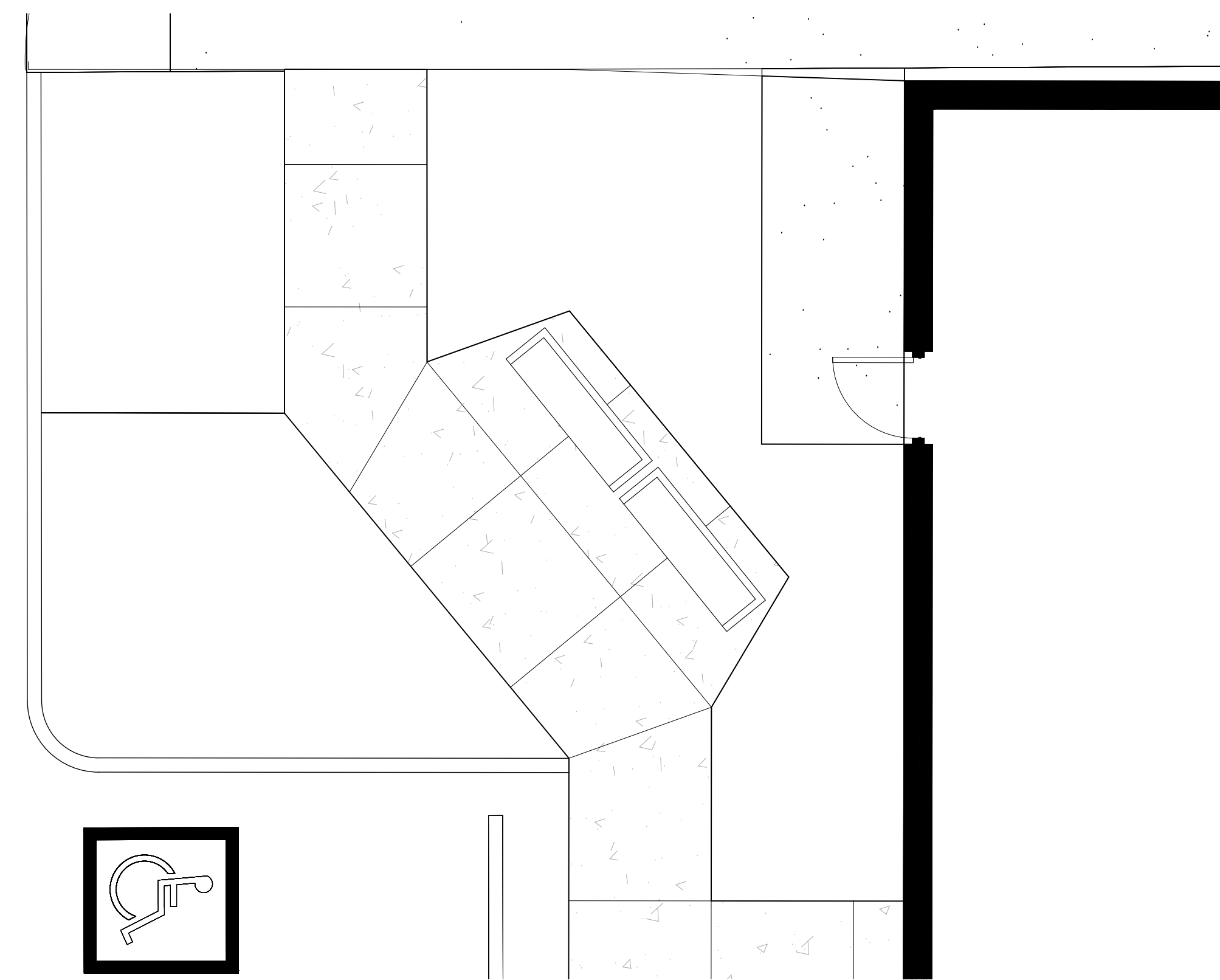
L-102

IRRIGATION PLAN - BLDG 1

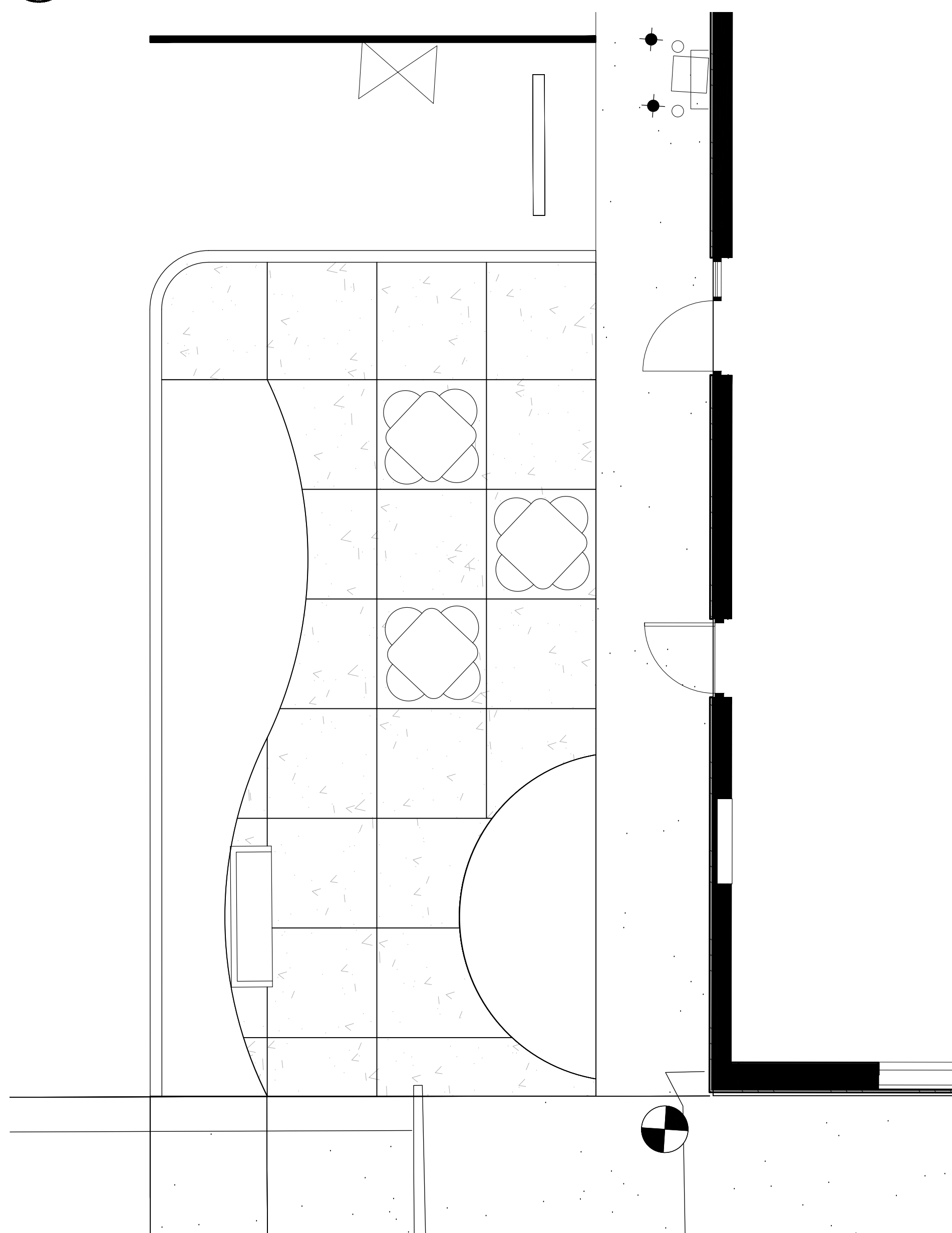
5/24/2021 9:36:21 AM



1 LARGE-SCALE PLAN - CENTRAL PLAZA
L-X | L-6 SCALE: 1/4" = 1'-0"



2 LARGE-SCALE PLAN - NORTH PLAZA
L-X | L-6 SCALE: 1/4" = 1'-0"



5 LARGE-SCALE PLAN - S.W. PLAZA
L-X | L-6 SCALE: 1/4" = 1'-0"

3 OUTDOOR DINING TABLE
L-X | L-6 SCALE: NONE

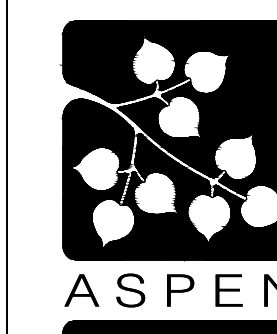
4 BENCH
L-X | L-6 SCALE: NONE

6 TRASH RECEPTACLE
L-X | L-6 SCALE: NONE

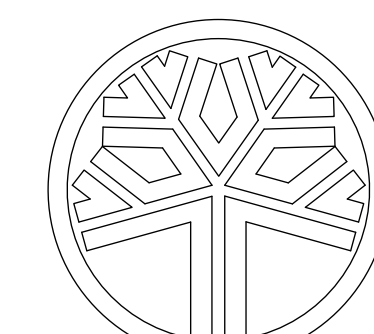
**LEWIS COUNTY COMMUNITY DEVELOPMENT FACADE
IMPROVEMENT
LEWIS COUNTY FACILITIES DEPARTMENT**

351 NW NORTH STREET, CHEHALIS, WA 98532
Facilities Department

DESIGN CONSULTANT



LANDSCAPE
ARCHITECTURE
SITE PLANNING
ASPEN DESIGN GROUP
P.O. BOX 2384
ISSAQUAH, WA 98027
(425) 292-9845 (PHONE)
CONTACT: PAUL J. DIX



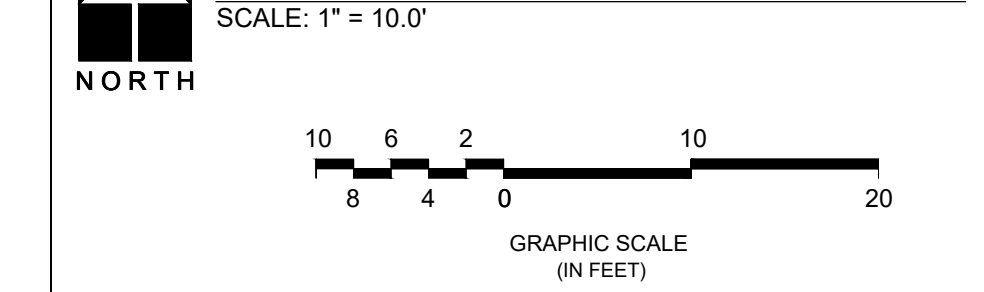
STATE OF WASHINGTON
REGISTERED LANDSCAPE ARCHITECT
PAUL J. DIX
CERTIFICATE NO. 620

(NOT FOR CONSTRUCTION)

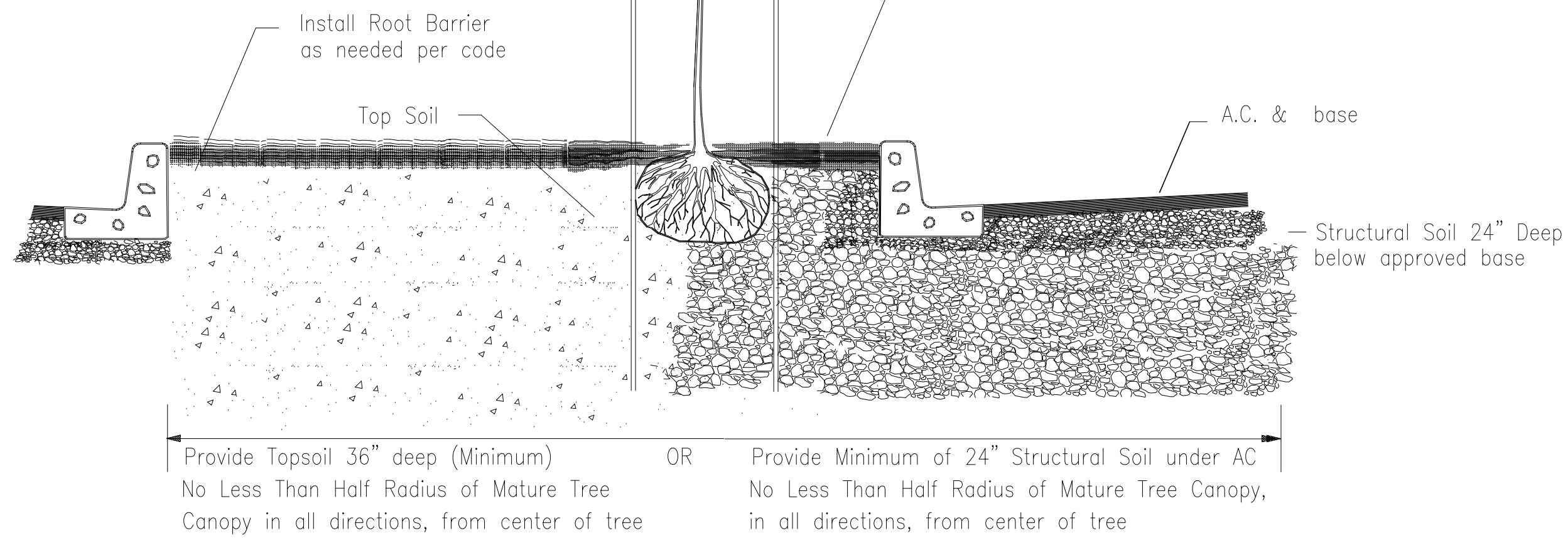
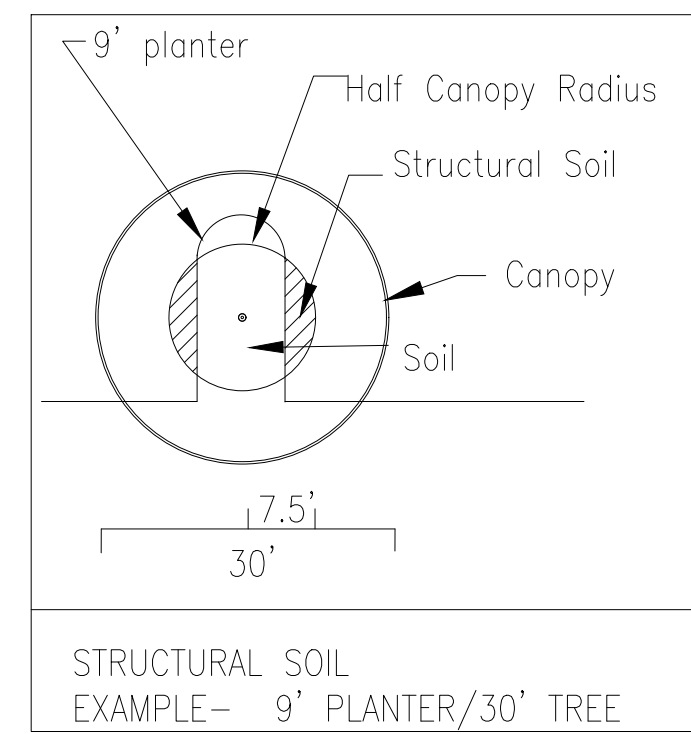
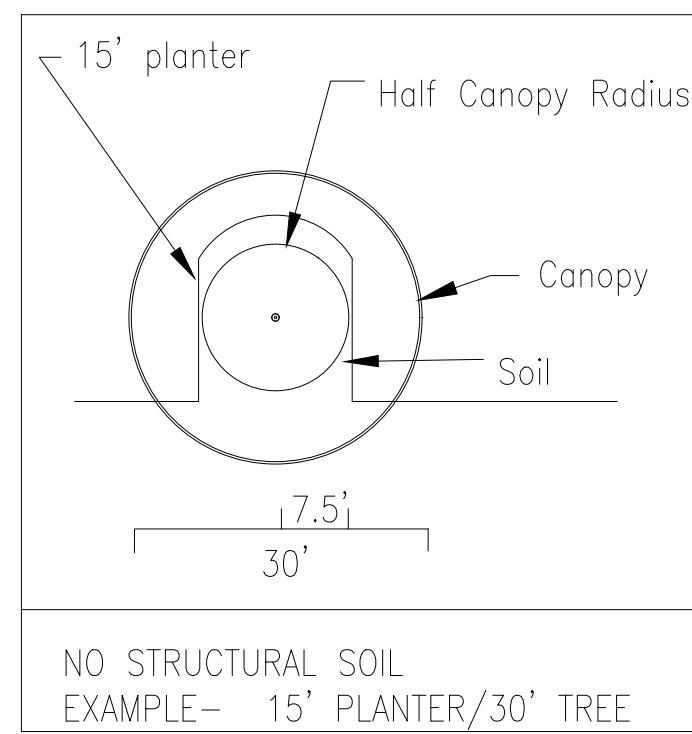
ORIGINAL SHEET SIZE = 24 x 36
HALF SIZE REDUCTIONS = 11 x 17
REVISIONS:

SHEET TITLE

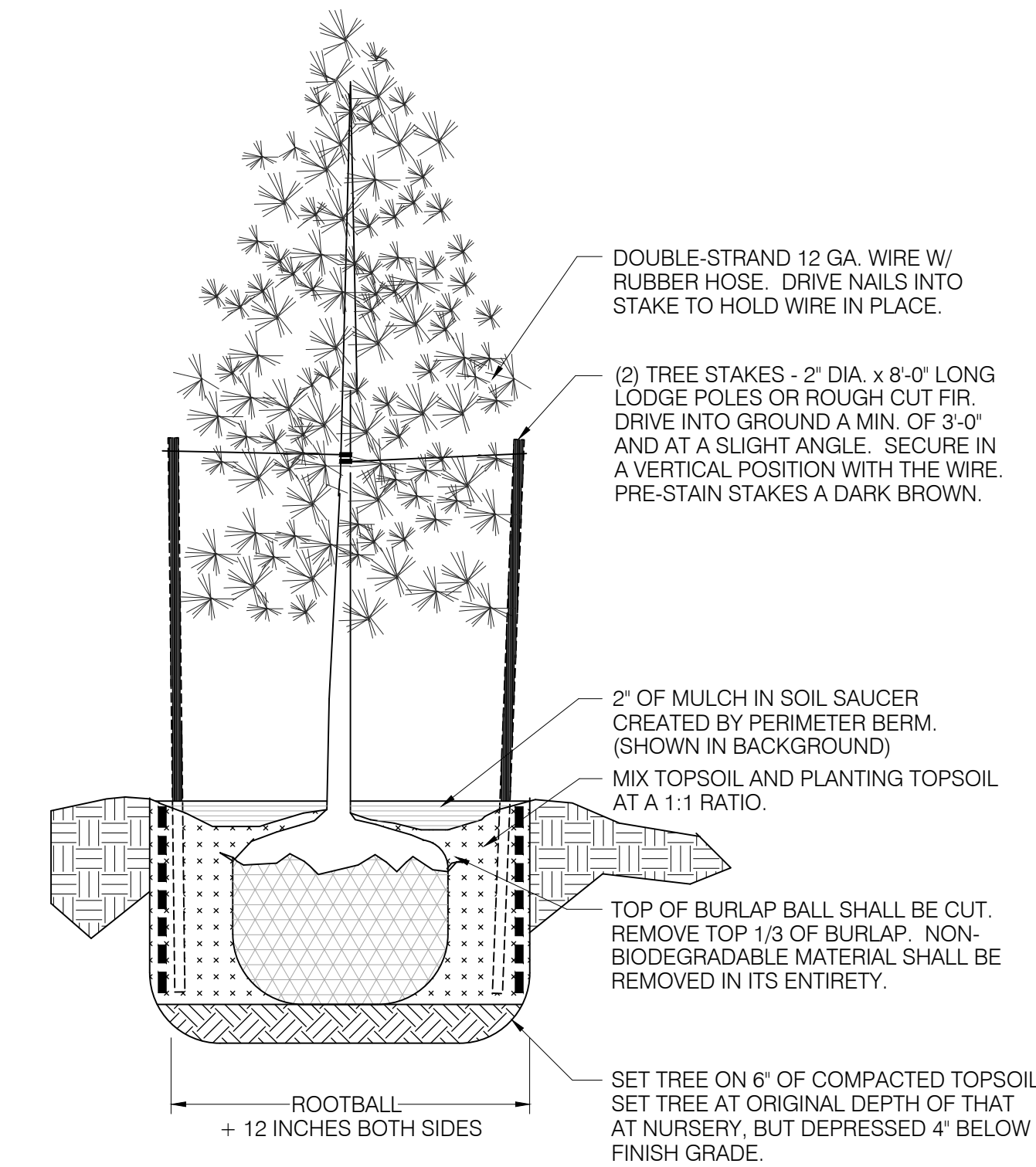
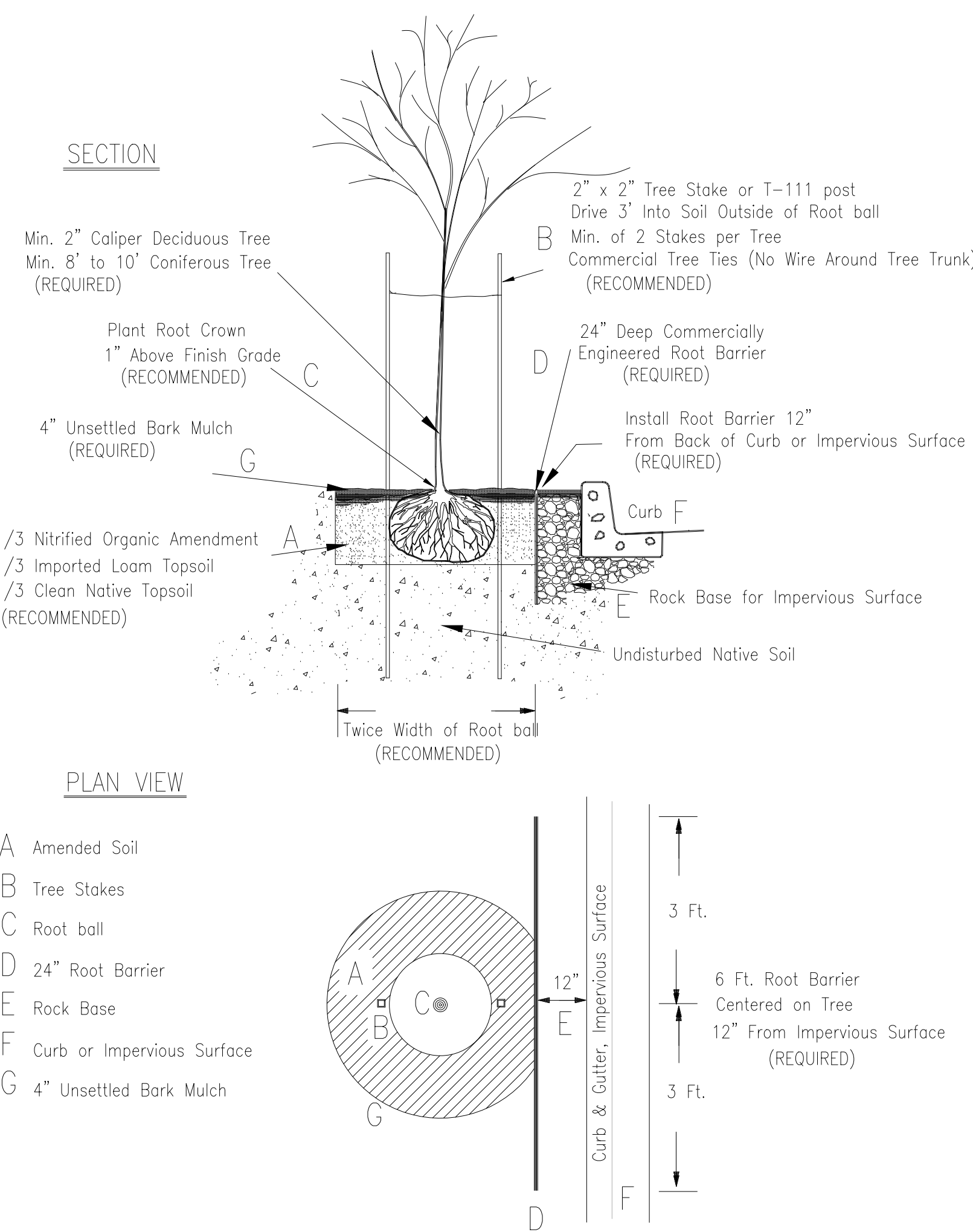
LARGE-SCALE PLANS / DETAILS
SCALE: 1" = 10.0'



DATE: 06-21-2021
PERMIT TI SET
SHEET NO.
L-104
LARGE-SCALE PLANS / DETAILS
BLDG 1



PROVIDE TREES WITH ADEQUATE TOPSOIL TO THRIVE.
PLANTER WIDTH MUST BE A MINIMUM OF 1/4 DIAMETER OF MATURE TREE CANOPY, IN ALL DIRECTIONS, FROM CENTER OF TREE; OR STRUCTURAL SOILS MAY BE INSTALLED UNDER PAVING TO MEET THIS REQUIREMENT
STRUCTURAL SOIL SPECIFICATIONS PER CORNELL UNIVERSITY OR EQUAL



1 PARKING LOT TREE INSTALLATION

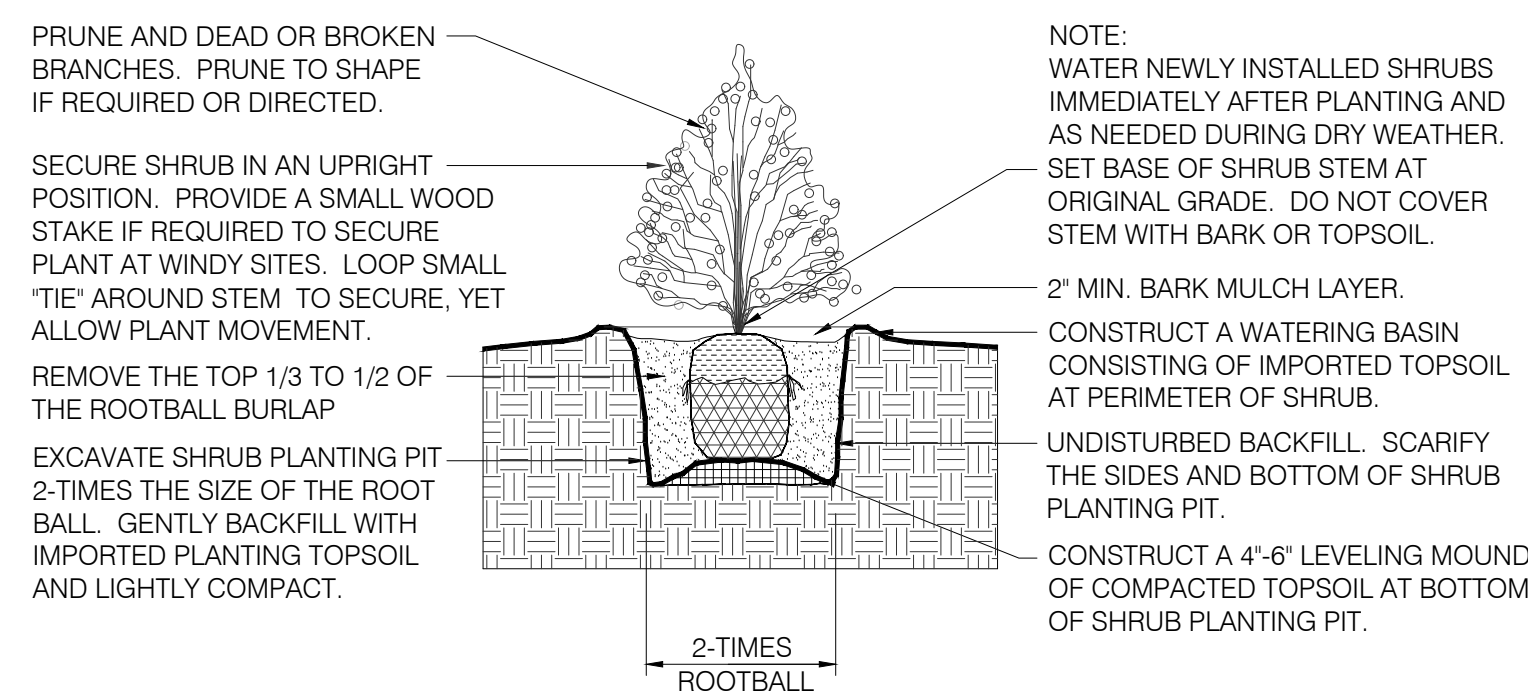
L-X | L-105 SCALE: 1/4" = 1'-0"

2 DECIDUOUS TREE INSTALLATION

L-X | L-101 SCALE: 1/4" = 1'-0"

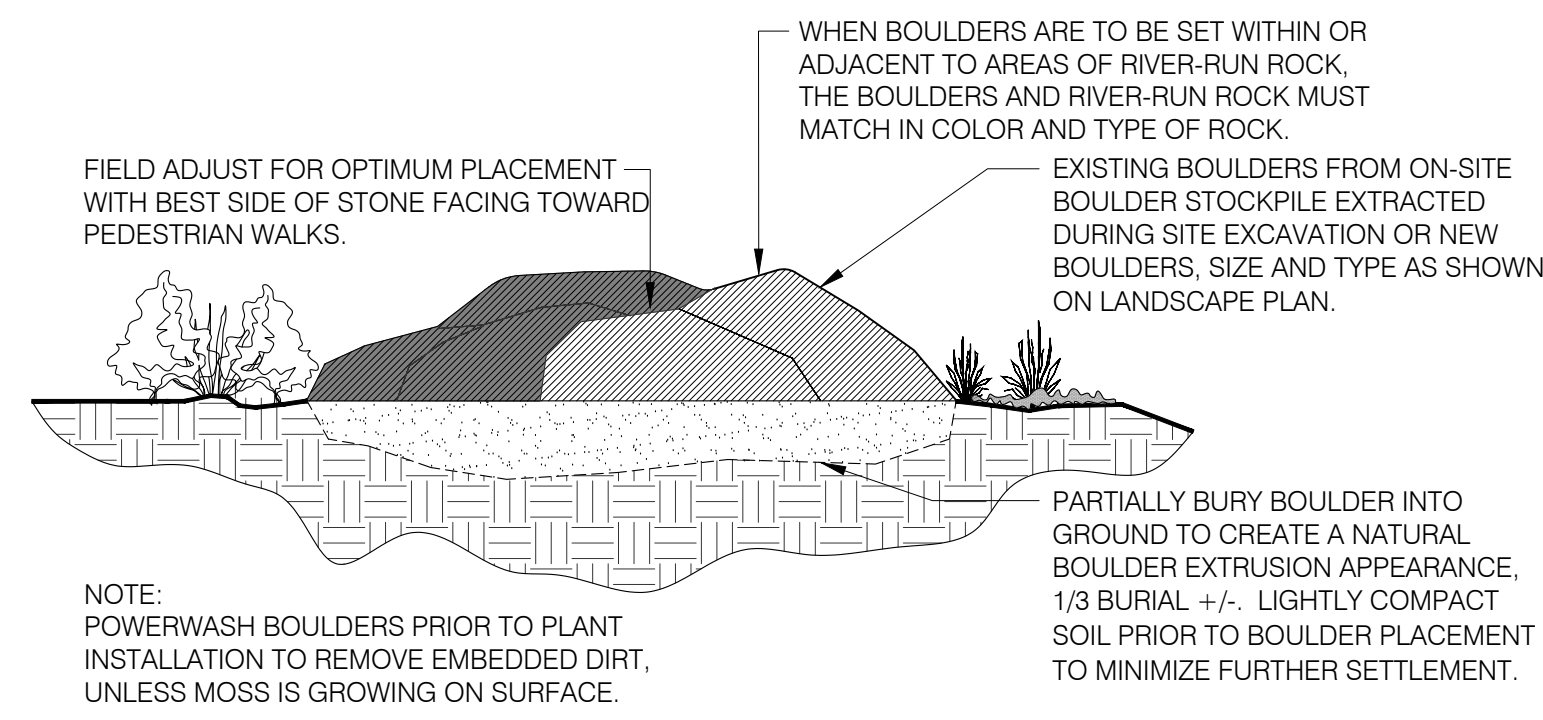
3 CONIFEROUS TREE INSTALLATION

L-X | L-105 SCALE: NONE



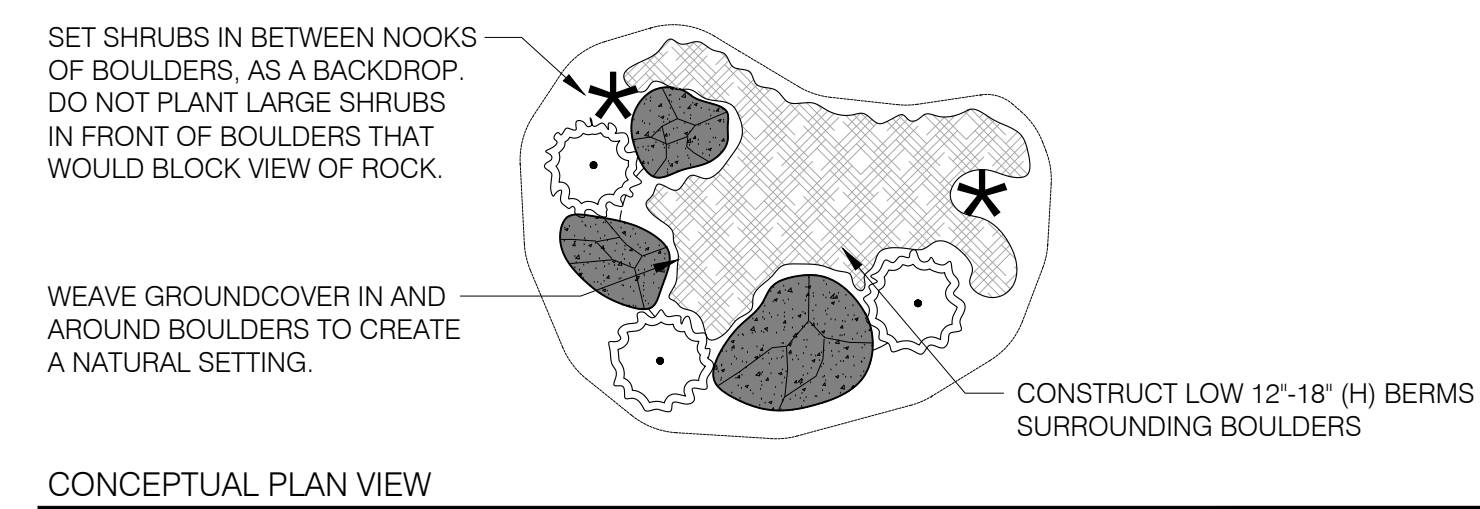
4 SHRUB INSTALLATION

L-X | L-105 SCALE: NONE

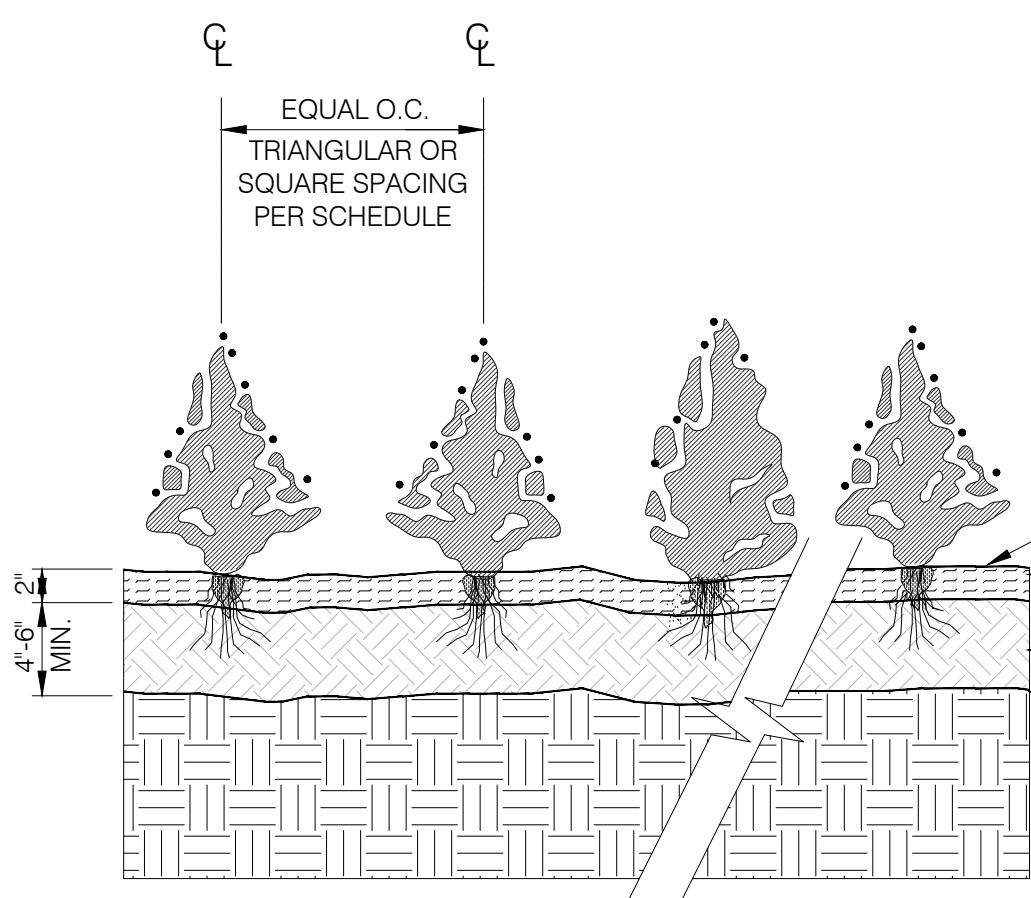


5 BOULDER / DECORATIVE ROCK INSTALLATION

L-X | L-105 SCALE: NONE

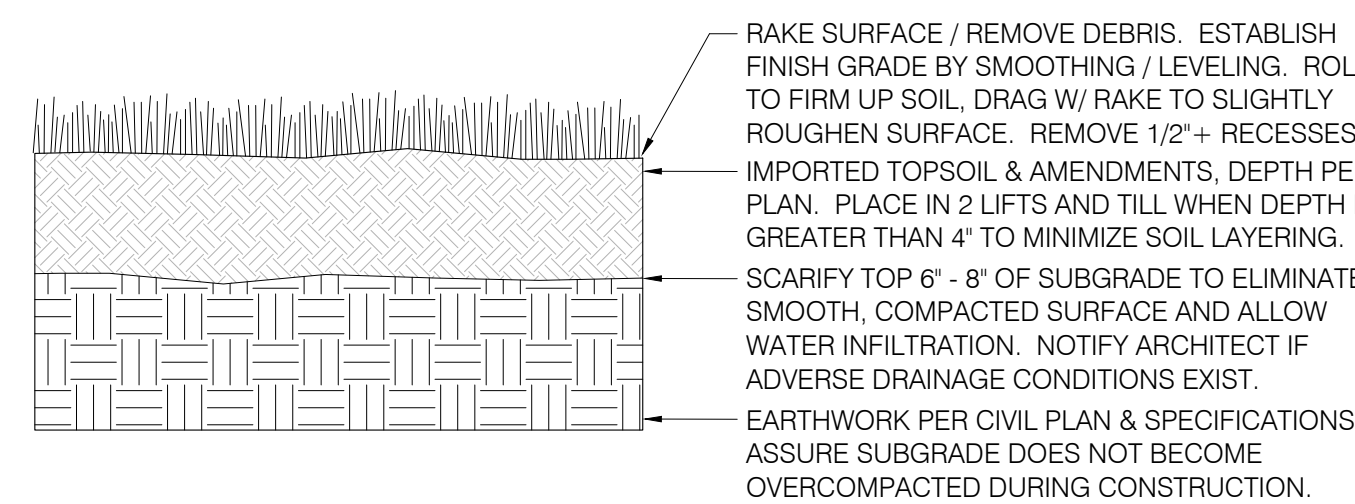


CONCEPTUAL PLAN VIEW



6 GROUNDCOVER INSTALLATION

L-X | L-105 SCALE: NONE



7 LAWN SECTION

L-X | L-105 SCALE: NONE

DESIGN CONSULTANT

LANDSCAPE ARCHITECTURE
SITE PLANNING
ASPEN DESIGN GROUP
P.O. BOX 2384
ISSAQUAH, WA 98027
(425) 292-9845 (PHONE)
CONTACT: PAUL J. DIX

STATE OF WASHINGTON
REGISTERED LANDSCAPE ARCHITECT
PAUL J. DIX
CERTIFICATE NO. 620
(NOT FOR CONSTRUCTION)

ORIGINAL SHEET SIZE = 24 x 36
HALF SIZE REDUCTIONS = 11 x 17

REVISIONS:

DATE: 06-21-2021

PERMIT TI SET

SHEET NO.

L-105

LANDSCAPE DETAILS
BLDG 1

1 SPRAY CONTROL ZONE VALVE IRRIGATION DETAIL
 SCALE: NOT TO SCALE
 L-103 | L-106

2 QUICK COUPLER VALVE IRRIGATION DETAIL
 SCALE: NOT TO SCALE
 L-103 | L-106

3 MASTER BALL VALVE IRRIGATION DETAIL
 SCALE: NOT TO SCALE
 L-103 | L-106

4 REDUCED PRESSURE BACKFLOW ASSEMBLY
 SCALE: NOT TO SCALE
 L-103 | L-106

5 IRRIGATION CONTROLLER IRRIGATION DETAIL
 SCALE: NOT TO SCALE
 L-103 | L-106

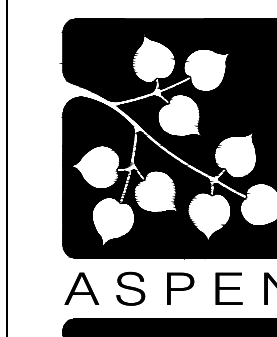
6 SOLAR SYNC IRRIGATION DETAIL
 SCALE: NOT TO SCALE
 L-103 | L-106

7 TRENCH SECTIONS
 SCALE: NOT TO SCALE
 L-103 | L-106

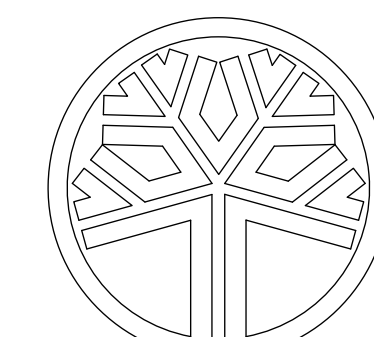
8 POP-UP SPRAY IRRIGATION DETAIL
 SCALE: NOT TO SCALE
 L-103 | L-106

**LEWIS COUNTY COMMUNITY DEVELOPMENT FACADE
 IMPROVEMENT
 LEWIS COUNTY FACILITIES DEPARTMENT**
 351 NW NORTH STREET, CHEHALIS, WA 98532
 Facilities Department

DESIGN CONSULTANT



LANDSCAPE
 ARCHITECTURE
 SITE PLANNING
 ASPEN DESIGN GROUP
 P.O. BOX 2384
 ISSAQUAH, WA 98027
 (425) 292-9845 (PHONE)
 CONTACT: PAUL J. DIX



STATE OF WASHINGTON
 REGISTERED LANDSCAPE ARCHITECT
 PAUL J. DIX
 CERTIFICATE NO. 620

(NOT FOR CONSTRUCTION)

ORIGINAL SHEET SIZE = 24 x 36
 HALF SIZE REDUCTIONS = 11 x 17

REVISIONS:

DATE:
 06-21-2021

PERMIT TI SET

SHEET NO.

L-106
 IRRIGATION DETAILS
 BLDG 1