

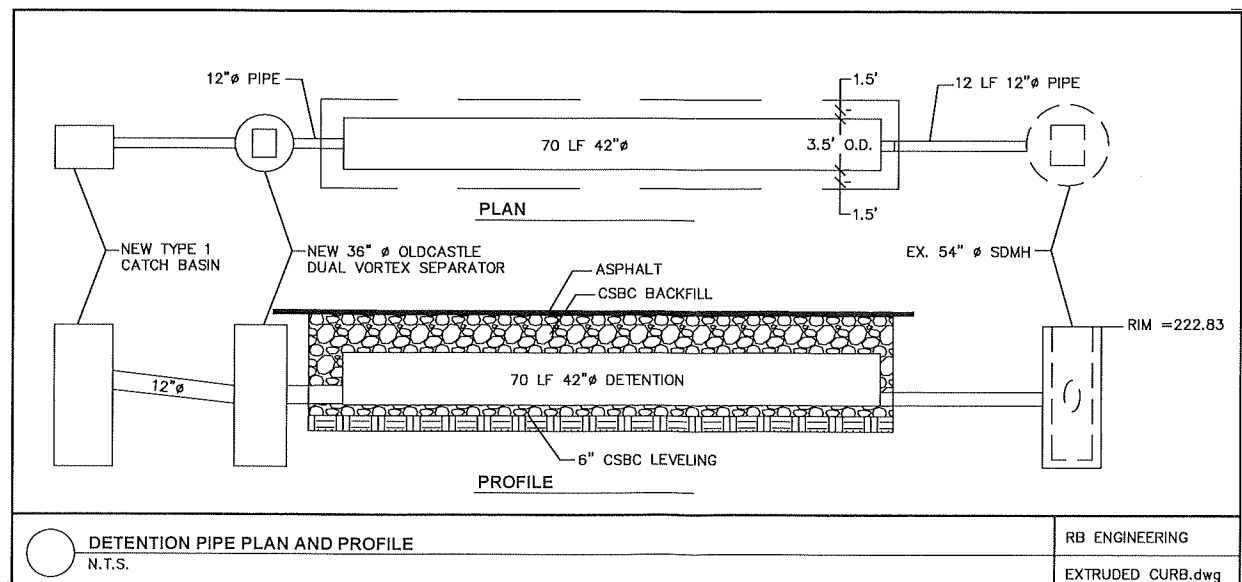
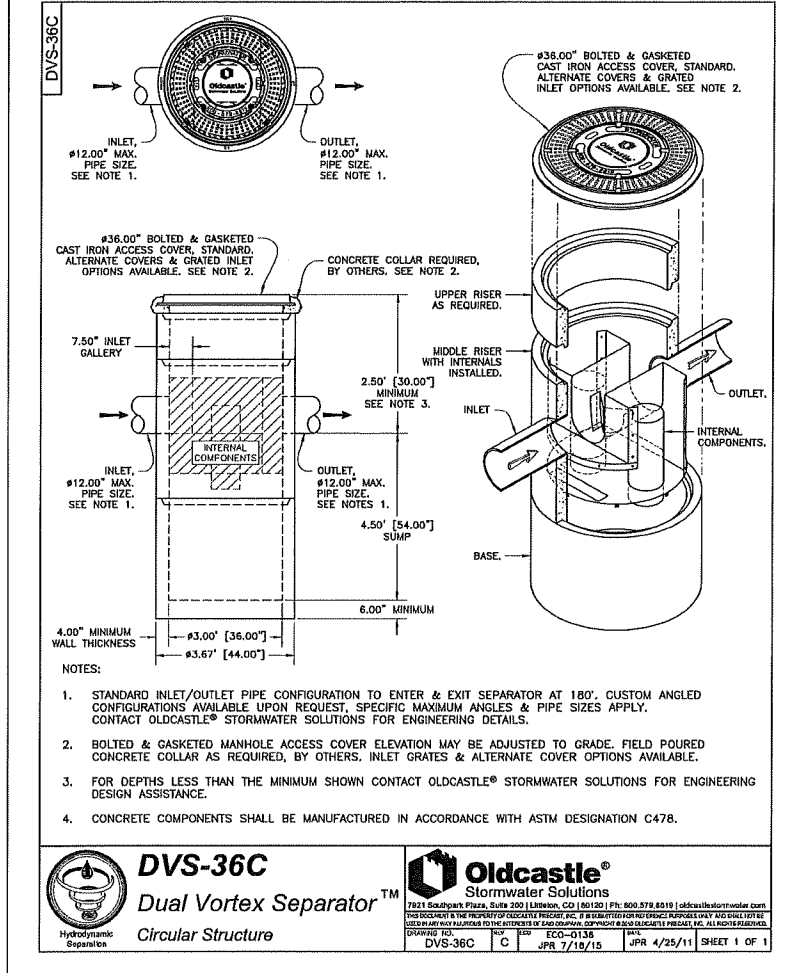
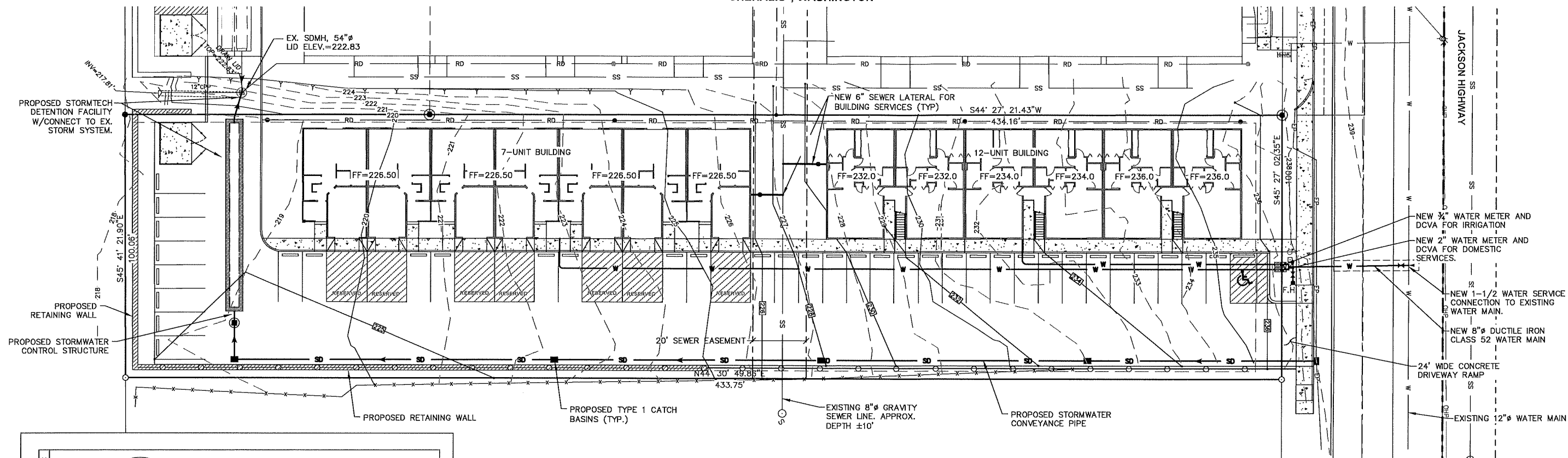
JACKSON PARK PHASE II

SECTION 4, TOWNSHIP 13 NORTH, RANGE 2 WEST, W.M.

"CHEHALIS", WASHINGTON



SCALE: 1"=20 FEET
0 10 20 40



| | | | | | | |
|--|------|------------------|---------------|-----------------|-----------------|---------------|
| NO. | DATE | DESIGNED BY: ALE | DRAWN BY: ALE | CHECKED BY: RWB | DATE: 1/29/2021 | SCALE: 1"=20' |
| JACKSON PARK PHASE II | | | | | | |
| | | | | | | WA. |
| | | | | | | LEWIS COUNTY |
| PRELIMINARY DRAINAGE AND UTILITY PLAN | | | | | | |
| | | | | | | |
| RB Engineering CIVIL ENGINEERING - LAND PLANNING - UTILITIES OFF: (360) 740-8819 FAX: (360) 740-8812 P.O. Box 823 CHEHALIS, WA 98522 | | | | | | |
| JOB NUMBER 20119 | | | | | | |
| DRAWING NAME 20119_PGDP_L | | | | | | |
| 2 OF 2 | | | | | | |

DVS-36C
Dual Vortex Separator™
Circular Structure

Oldcastle®
Stormwater Solutions

17921 Southpark Plaza, Suite 200 | Littleton, CO 80120 | PH: 800.579.8519 | oldcastlestormwater.com
 DEVELOPED BY THE MEMBER OF OLDCASTLE PRODUCTS, INC. IF SEEN IN OTHER REFERENCED DOCUMENTS BY OLDCASTLE, IT IS
 THE PROPERTY OF OLDCASTLE PRODUCTS, INC. AND IS NOT TO BE REPRODUCED OR TRANSMITTED IN ANY FORM OR BY ANY MEANS
 WITHOUT THE WRITTEN PERMISSION OF OLDCASTLE PRODUCTS, INC. ALL RIGHTS RESERVED.
 DRAWING NO. ECG-0138 REV. 04/25/11

RB ENGINEERING
EXTRUDED_CURB.dwg