

PRELIMINARY PLAT OF HOMESTREET PLAT

PREPARED FOR
HOMESTREET DEVELOPMENT, LLC
1868 STATE AVE NE
OLYMPIA, WA 98506

LEGAL DESCRIPTION

THAT PORTION OF THE SOUTHWEST QUARTER OF SECTION 14, TOWNSHIP 13 NORTH, RANGE 2 WEST, W.M., LYING NORTHERLY OF THE NORTHERLY RIGHT-OF-WAY LINE OF THE C.C. & C. RAILROAD, AND EAST OF RUSH ROAD.

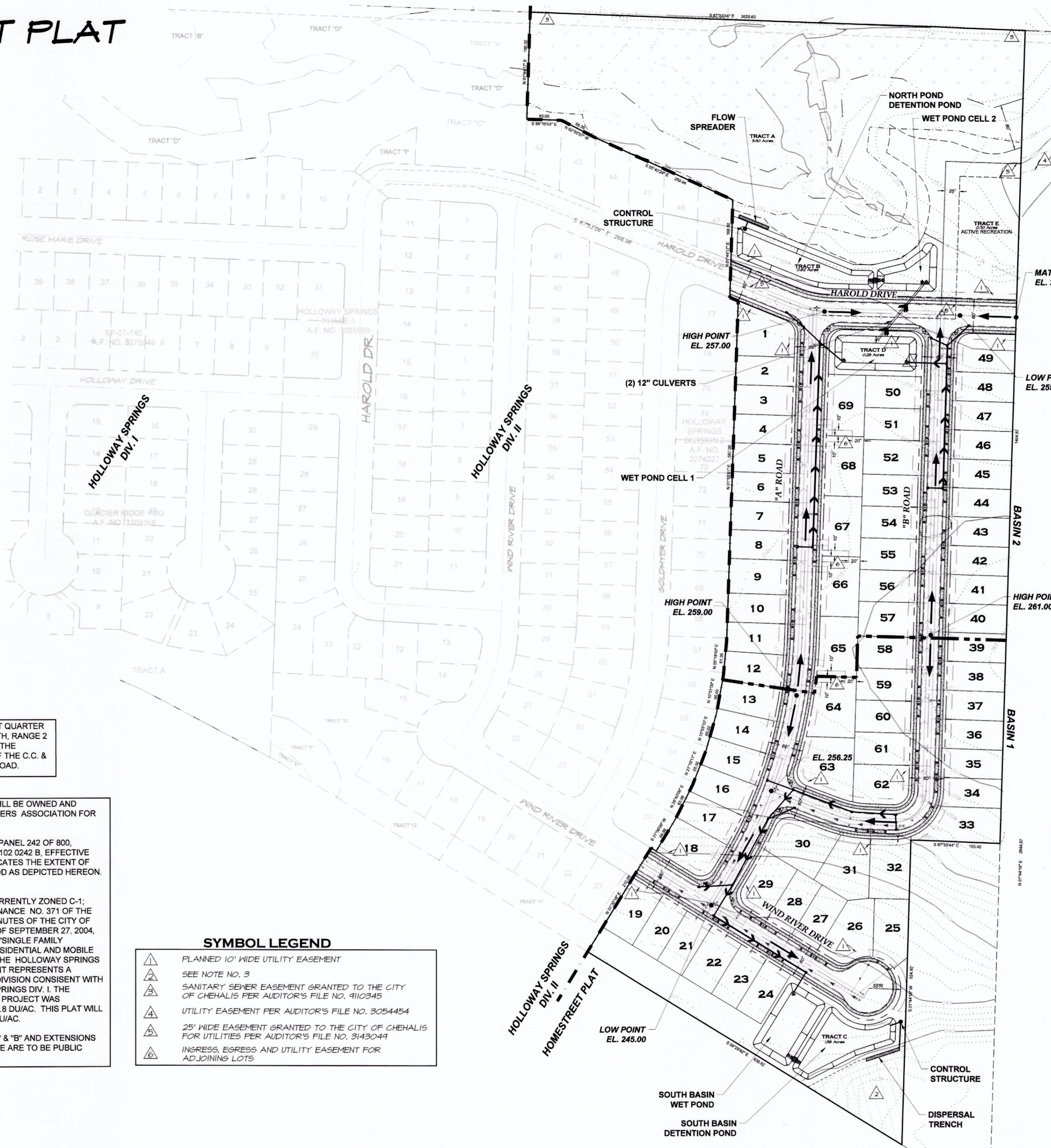
NOTES

- TRACTS "A", "B", "C", "D", & "E" WILL BE OWNED AND MAINTAINED BY THE HOMEOWNERS ASSOCIATION FOR HOMESTREET LACE.
- FLOOD INSURANCE RATE MAP, PANEL 242 OF 800, COMMUNITY-PANEL NUMBER 530102 0242 B, EFFECTIVE DATE: DECEMBER 15, 1981 INDICATES THE EXTENT OF THE ONE-HUNDRED-YEAR FLOOD AS DEPICTED HEREON. (HATCHED AREA)
- THE SUBJECT PROPERTY IS CURRENTLY ZONED C-1; HOWEVER PURSUANT TO ORDINANCE NO. 371 OF THE CITY OF NAPAVINE AND THE MINUTES OF THE CITY OF CHEHALIS COUNCIL MEETING OF SEPTEMBER 27, 2004, RESIDENTIAL USES INCLUDING "SINGLE FAMILY RESIDENTIAL, MULTIFAMILY RESIDENTIAL AND MOBILE HOME PARKS" ARE ALLOWED. THE HOLLOWAY SPRINGS DIVISION II AND III DEVELOPMENT REPRESENTS A PLANNED SINGLE FAMILY SUBDIVISION CONSISTENT WITH THE DENSITY OF HOLLOWAY SPRINGS DIV. I. THE HOLLOWAY SPRINGS DIVISION I PROJECT WAS DEVELOPED AT A DENSITY OF 4.8 DU/AC. THIS PLAT WILL RESULT IN A DENSITY OF 3.10 DU/AC.
- ROADWAYS DESIGNATED AS "A" & "B" AND EXTENSIONS OF HAROLD & WIND RIVER DRIVE ARE TO BE PUBLIC ROADWAYS.

SYMBOL LEGEND

- PLANNED 10' WIDE UTILITY EASEMENT
- SEE NOTE NO. 3
- SANITARY SEWER EASEMENT GRANTED TO THE CITY OF CHEHALIS PER AUDITOR'S FILE NO. 4110345
- UTILITY EASEMENT PER AUDITOR'S FILE NO. 3054454
- 25' WIDE EASEMENT GRANTED TO THE CITY OF CHEHALIS FOR UTILITIES PER AUDITOR'S FILE NO. 3143044
- INGRESS, EGRESS AND UTILITY EASEMENT FOR ADJOINING LOTS

TOPOGRAPHIC NOTE:
THE EXISTING TOPOGRAPHIC DATA SHOWN ON THESE DRAWINGS HAS BEEN PREPARED, IN PART, BASED UPON INFORMATION FURNISHED BY OTHERS. WHILE THIS INFORMATION IS BELIEVED TO BE RELIABLE, HGP CANNOT ENSURE ITS ACCURACY AND THIS IS NOT RESPONSIBLE FOR THE ACCURACY OF THAT INFORMATION OR FOR ANY ERRORS OR OMISSIONS WHICH MAY HAVE BEEN INCORPORATED INTO THESE DRAWINGS AS A RESULT.



SHEET INDEX

- 1 - PRELIMINARY GRADING & DRAINAGE PLAN
- 2 - ENLARGED POND PLANS
- 3 - TESC & DRAINAGE DETAILS
- 4 - PRELIMINARY UTILITY PLAN
- 5 - PRELIMINARY LANDSCAPE PLAN

SITE DATA

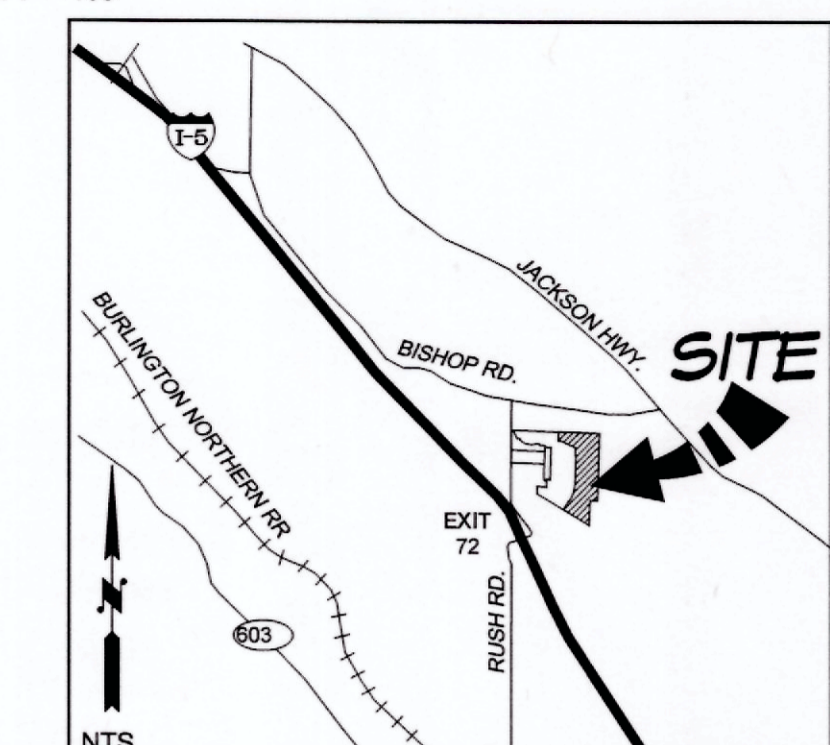
PARCEL NO.	017875734078
ZONING	C-1 (SEE NOTE #3)
AREA	22.27 ACRES
TOTAL LOTS	69
DENSITY	3.10 DU/AC.
AVERAGE LOT SIZE	5,716 SQ. FT.
SMALLEST LOT SIZE	5,000 SQ. FT.
LENGTH OF ROADS	3,031 LF
AREA OF ROADS	4.33 AC.
OPEN SPACE TOTAL	8.88 ACRES (40%)
TRACT USAGE	
TRACT "A" WETLAND/BUFFER / OPEN SPACE	5.90 AC.
TRACT "B" STORMWATER	0.62 AC.
TRACT "C" STORMWATER	1.38 AC.
TRACT "D" STORMWATER	0.28 AC.
TRACT "E" ACTIVE REC./TOT LOT	0.70 AC.
	8.88 AC.

LEGEND

- EX. POWER POLE
- EX. POWER VAULT
- EX. POWER TRANSFORMER
- EX. POWER PEDESTAL
- EX. PVC RISER
- EX. OVERHEAD POWER
- EX. UNDER GROUND POWER
- EX. TELEPHONE PEDESTAL
- EX. TELEPHONE MANHOLE
- EX. CABLE PEDESTAL
- EX. TELEPHONE LINE
- EX. GAS VALVE
- EX. GAS LINE
- EX. POWER JUNCTION BOX
- EX. CATCHBASIN TYPE 1
- EX. STORM MAIN LINE
- EX. SIGNS
- EX. FENCE
- EX. WATERMETER
- EX. HYDRANT
- EX. VALVE
- EX. BLOWOFF
- EX. WATER LINE
- EX. SEWER CLEANOUT
- EX. SEWER MANHOLE
- EX. SEWER LINE
- EX. EDGE OF PAVEMENT
- EX. MAJOR CONTOUR
- EX. MINOR CONTOUR
- FINISH MAJOR CONTOUR
- FINISH MINOR CONTOUR
- NEW PEDESTRIAN STREET LIGHT
- NEW HIGH MAST W/ PED SCALE LIGHT
- NEW LIGHTING J BOX
- NEW TRANSFORMER & SERVICE DISCONNECT
- NEW WATERMETER
- NEW HYDRANT
- NEW VALVE
- NEW BLIND FLANGE
- NEW BLOCKING
- NEW WATERMAIN
- NEW CATCHBASIN TYPE 1
- NEW CATCHBASIN TYPE 2-48
- NEW STORM CATCHBASIN W/ SOLID LID
- NEW STORM MAIN LINE
- NEW LOT DRAINAGE LINE
- NEW SEWER CLEANOUT
- NEW SEWER MANHOLE
- NEW GRAVITY SEWER LINE
- NEW PIGG LAUNCH PORT
- NEW SEWER FORCEMAIN
- EX. CONCRETE
- EX. ASPHALT
- NEW CONCRETE
- NEW ASPHALT

CITY OF CHEHALIS
VERTICAL DATUM: NGVD 1929 CITY OF CHEHALIS
BASIS OF BEARING: PLAT OF HOLLOWAY SPRINGS DIVISION 2 RECORDED UNDER AUDITOR'S FILE NO. 3274227

SCALE: 1" = 100'



DESIGNED BY: DS
DRAWN BY: MAM
CHECKED BY: SDH
DATE: FEB. 2020
SCALE: H 1" = 100'
V V
N/A



HATTON GODAT AND SURVEYORS
ENGINEERS
3910 MARTIN WAY E, SUITE B
OLYMPIA, WA 98506
TEL: 360.943.1599 FAX: 360.357.6299
hatterpantier.com

DATE: _____
REVISIONS: _____

HOMESTREET PLAT
DIVISION III PRELIMINARY SITE PLAN
PRELIMINARY GRADING & DRAINAGE PLAN

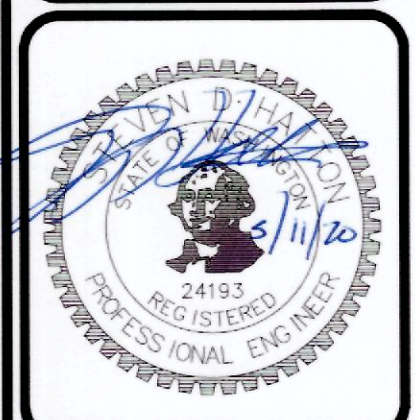
TPN# 017875734078

A PORTION OF SECTION 14, TOWNSHIP 13 NORTH, RANGE 2 WEST, W.M.

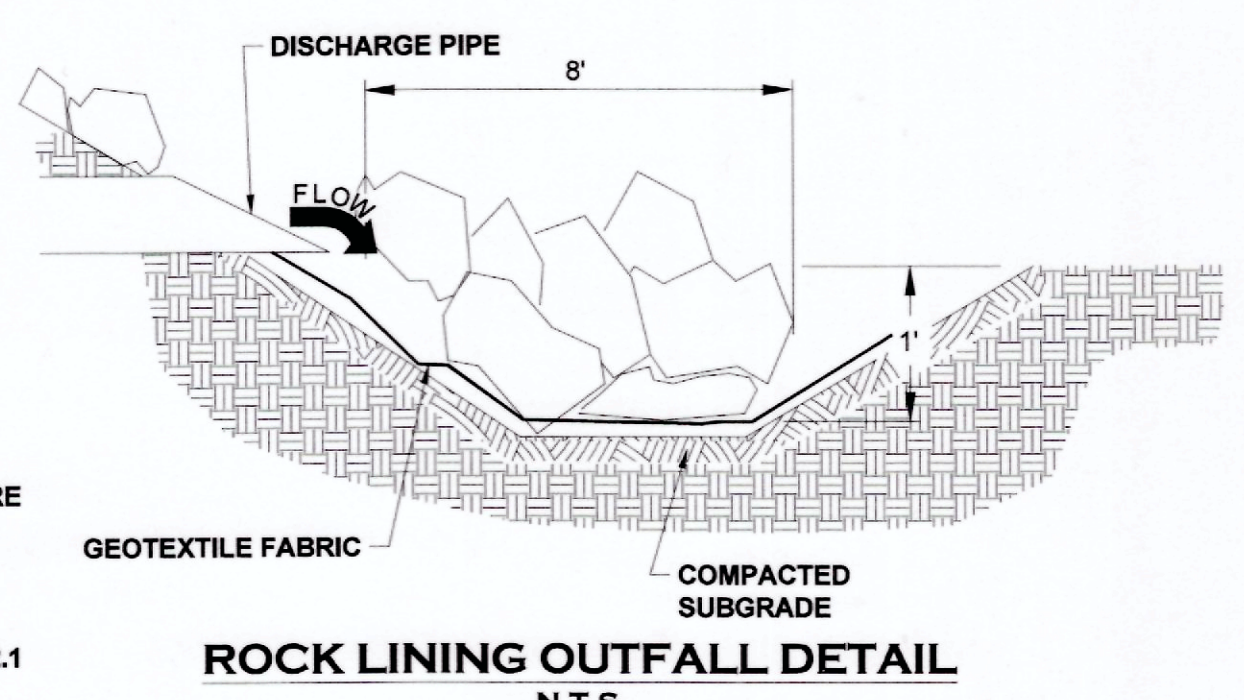
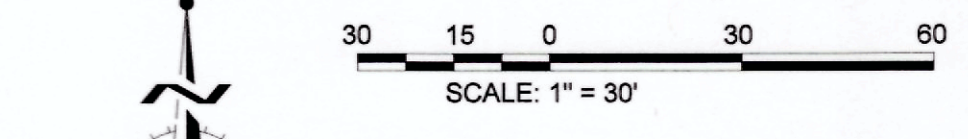
AGENCY NO. _____
SHEET: 1 OF 5
E:\dgn\19-000\19-059\Preliminary INDEX-19-059-pre-cov.dwg
JOB: 19-059

CITY OF CHEHALIS
 VERTICAL DATUM
 NGVD 1929 CITY OF CHEHALIS
 BASIS OF BEARING
 PLAT OF HOLLOWAY SPRINGS
 DIVISION 2 RECORDED UNDER
 AUDITOR'S FILE NO. 3274227

DESIGNED BY: DS
 DRAWN BY: MJM
 CHECKED BY: SDH
 DATE: FEB 2020
 SCALE: H: #####
 V: N/A

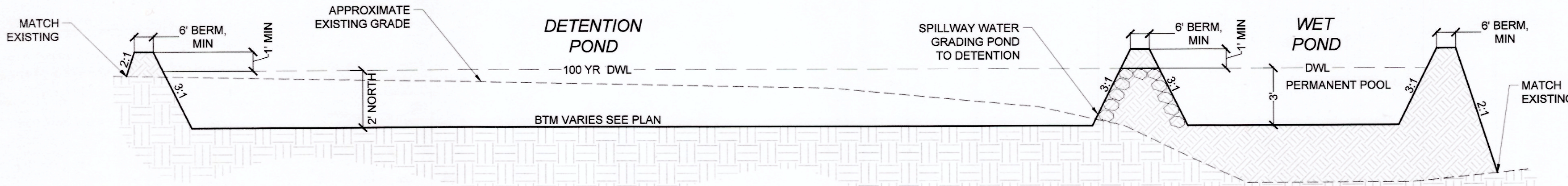
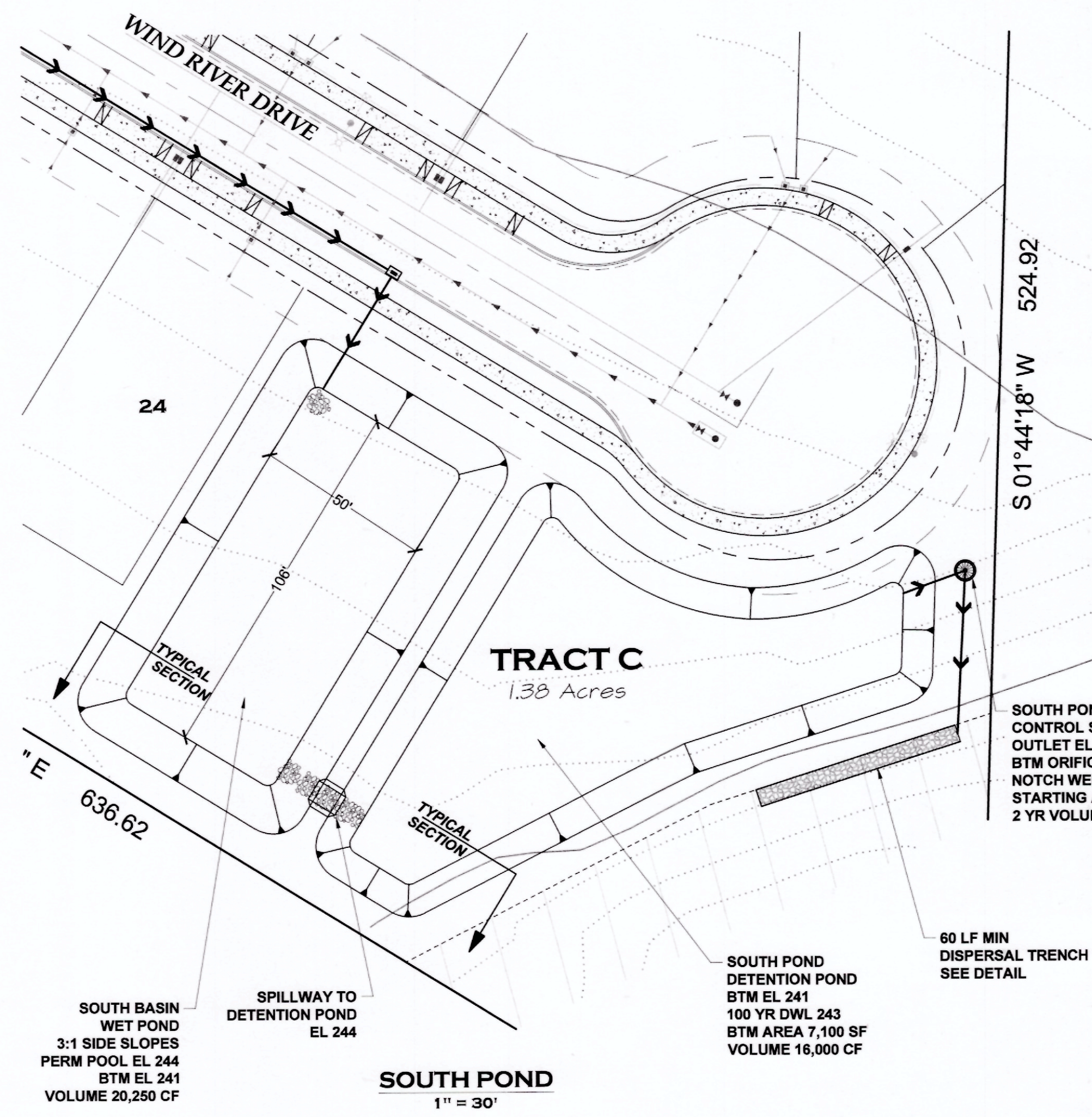
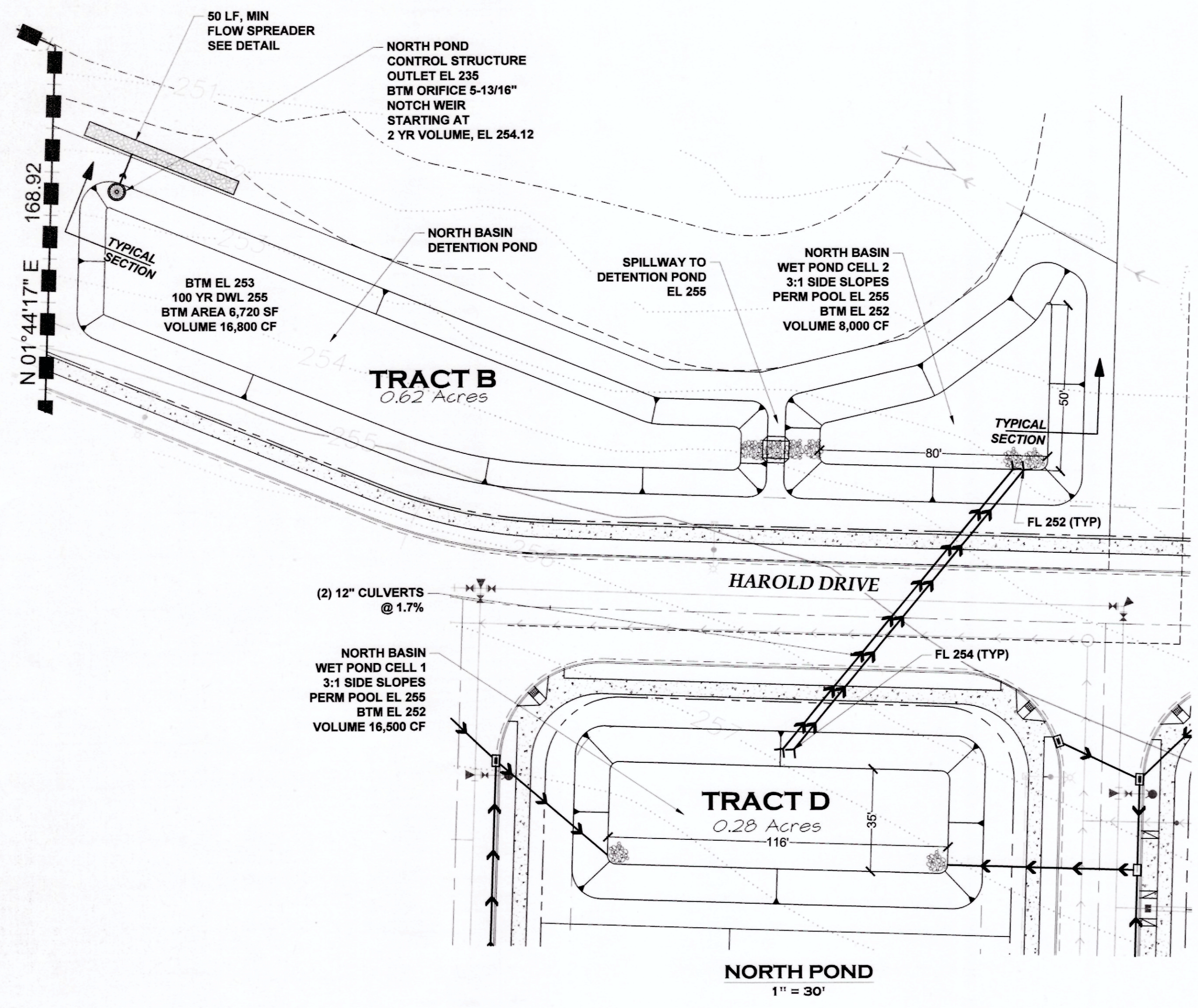


HATTON GODAT PANTIER
 ENGINEERS AND SURVEYORS
 3910 MARTIN WAY E. SUITE B
 OLYMPIA, WA 98506
 TEL: 360.943.1599 FAX: 360.357.6299
 hattonpantier.com

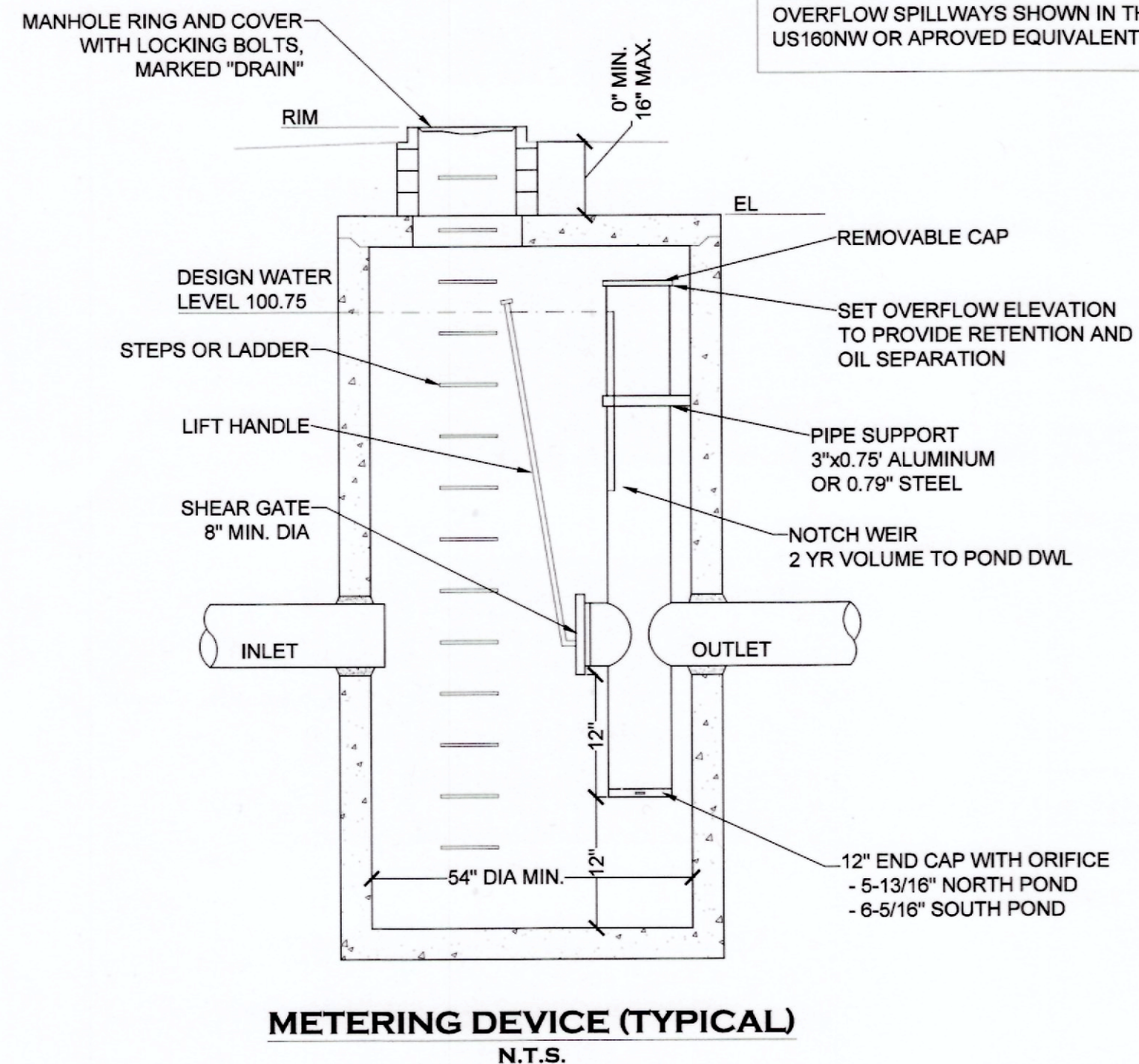
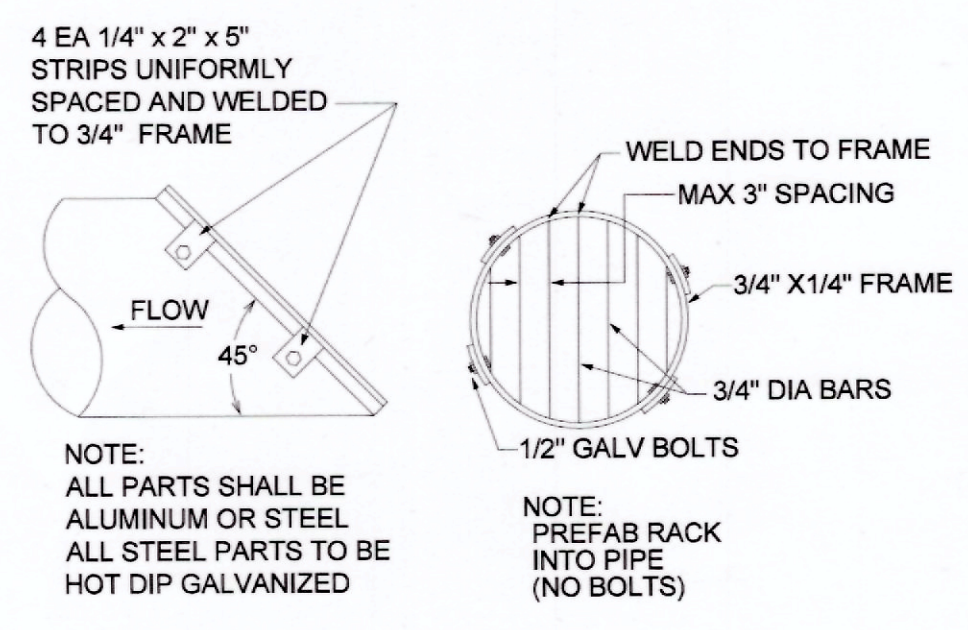
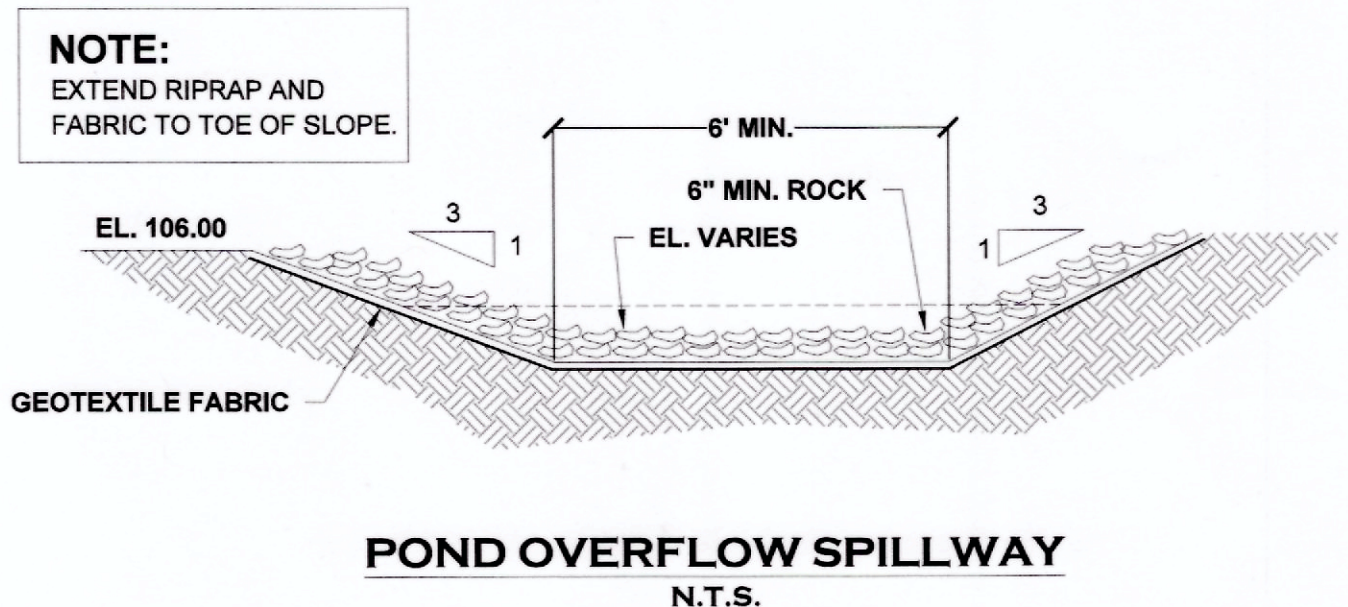
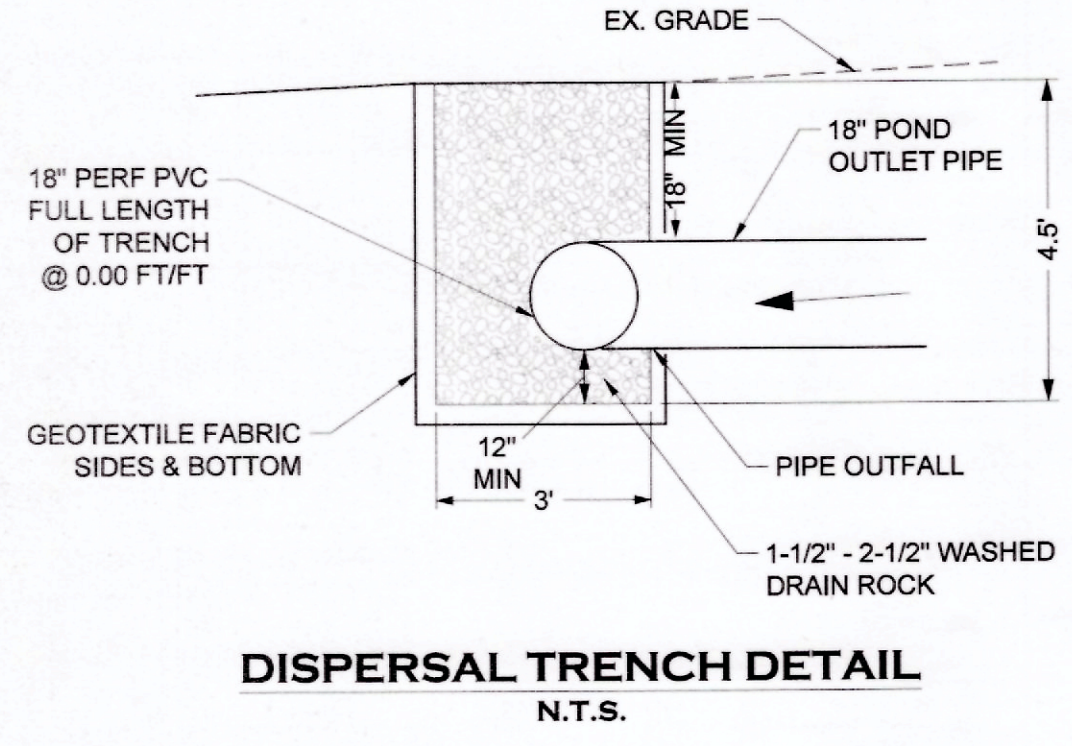


ROCK LINING NOTE:
 ROCK LINING SHALL CONFORM WITH TABLE 3.7 OF THE 2016 THURSTON COUNTY DRAINAGE DESIGN & EROSION CONTROL MANUAL.
 ROCK LINING SHALL BE REASONABLY WELL GRADED ASSORTMENT OF ROCK WITH THE FOLLOWING GRADATION:
 PASSING 8-INCH SQUARE SIEVE: 100%
 PASSING 3-INCH SQUARE SIEVE: 40 TO 60% MAXIMUM
 PASSING 3/4-INCH SQUARE SIEVE: 0 TO 10% MAXIMUM

GEOTEXTILE FABRIC NOTE:
 GEOTEXTILE FABRIC USED UNDER ROCK PROTECTION OF OUTFALLS AND OVERFLOW SPILLWAYS SHOWN IN THESE PLANS SHALL BE US FABRICS US160NW OR APPROVED EQUIVALENT.



GRASS NOTE:
 THE DETENTION PONDS SHALL BE SEEDED WITH A SEE MIXTURE SUITABLE FOR WET CONDITIONS. THE FOLLOWING OR EQUIVALENT MIXTURE MAY BE USED:
 TALL FESCUE.....65%
 SEASIDE BENTGRASS.....16%
 MEADOW FOXTAIL.....10%
 ALSIKE CLOVER.....9%
 SEE LANDSCAPING PLAN BY OTHERS FOR POND PLANTINGS



TOPOGRAPHIC NOTE:
 THE EXISTING TOPOGRAPHIC DATA SHOWN ON THESE DRAWINGS HAS BEEN PREPARED, IN PART, BASED UPON INFORMATION FURNISHED BY OTHERS. WHILE THIS INFORMATION IS BELIEVED TO BE RELIABLE, HGP CANNOT ENSURE ITS ACCURACY AND THIS IS NOT RESPONSIBLE FOR THE ACCURACY OF THAT INFORMATION OR FOR ANY ERRORS OR OMISSIONS WHICH MAY HAVE BEEN INCORPORATED INTO THESE DRAWINGS AS A RESULT.

REVISIONS:

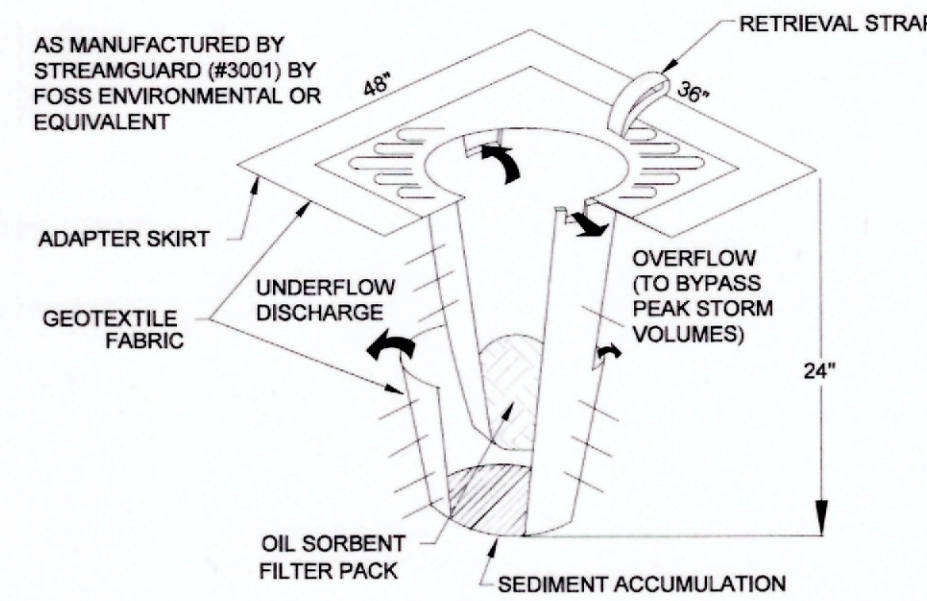
NO.	DATE	DESCRIPTION

TPN# 017875734078
HOMESTREET PLAT
 DIVISION III PRELIMINARY SITE PLAN
 ENLARGED POND PLANS
 A PORTION OF SECTION 14, TOWNSHIP 13 NORTH, RANGE 2 WEST, W.M.

AGENCY NO. _____
 SHEET: 2 OF 5
 E:\dgn\19-000\19-059\preliminary
 INDEX: 19-059-pre-pond.dwg
 JOB: 19-059

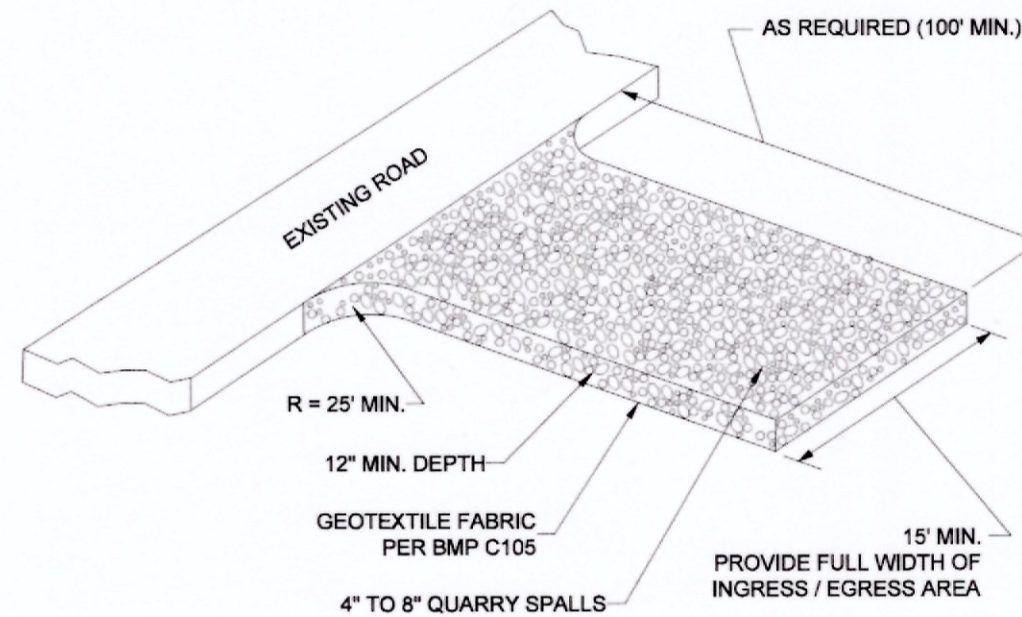
GENERAL NOTES (EROSION CONTROL)

- EROSION CONTROL MEASURES WILL BE IN PLACE PRIOR TO THE BEGINNING OF CONSTRUCTION. A REPRESENTATIVE FROM THE CITY WILL INSPECT AND APPROVE THE EROSION CONTROL MEASURES PRIOR TO THE START OF CONSTRUCTION.
- EROSION CONTROL MEASURES ARE NOT LIMITED TO THE ITEMS ON THIS PLAN. THE CONTRACTOR IS RESPONSIBLE FOR THE INSTALLATION AND MAINTENANCE OF ALL EROSION MEASURES, AS REQUIRED UNDER THE MOST RECENT VERSION OF THE CHEHALIS STORM WATER MANAGEMENT PLAN. CARE WILL BE TAKEN TO PREVENT MIGRATION OF SILT AND/OR POLLUTED RUNOFF TO OFF-SITE PROPERTIES.
- THE CONTRACTOR WILL MAKE REGULAR SURVEILLANCE OF ALL EROSION CONTROL MEASURES. IN ADDITION, EROSION CONTROL WILL BE THOROUGHLY INSPECTED AFTER EACH RAINFALL EVENT. THE CONTRACTOR WILL MAKE ALL NECESSARY REPAIRS, MODIFICATIONS, AND ADDITIONS AS NECESSARY TO ENSURE THE PROPER OPERATION OF THE EROSION CONTROL MEASURES. THE CITY MAY REQUIRE MORE FREQUENT INSPECTIONS OF EROSION CONTROL MEASURES BY THE CONTRACTOR SHOULD SITE OR WEATHER CONDITIONS DICTATE.
- DURING THE WET SEASON, NOVEMBER THROUGH MARCH, ALL DISTURBED SOILS WILL BE STABILIZED WITHIN 48 HOURS AFTER LAND DISTURBANCE ACTIVITIES HAVE CEASED. EROSION CONTROL MEASURES WILL INCLUDE, BUT ARE NOT LIMITED TO, INSTALLATION OF STRAW MATTING, JUTE MATTING, STRAW MULCH AND/OR WOOD CHIPS, AND COVERING THE AFFECTED AREA AND SPOIL PILES WITH PLASTIC SHEETING.
- THE CONTRACTOR WILL CHECK ALL SEEDED OR SODDED AREAS REGULARLY TO ENSURE THAT THE VEGETATIVE COVER IS BEING ADEQUATELY ESTABLISHED. AREAS WILL BE REPAIRED, RESEEDED, AND FERTILIZED AS REQUIRED.
- TRACKING OF SOIL OFF SITE WILL NOT BE ALLOWED. IF ANY SOIL IS TRACKED BEYOND THE LIMITS OF THE SITE, IT WILL BE REMOVED BEFORE THE END OF THAT WORKING DAY, TO PREVENT ADDITIONAL TRACKING. VEHICLE TIRES MUST BE SWEEPED OR WASHED PRIOR TO LEAVING THE PROJECT SITE.
- NO MORE THAN 500 LINEAL FEET (LF) OF TRENCH ON A DOWNSLOPE OF MORE THAN FIVE PERCENT WILL BE OPENED AT ONE TIME.
- EXCAVATED MATERIAL WILL BE PLACED ON THE UPHILL SIDE OF TRENCHES.
- EXCAVATED MATERIAL WILL NOT BE PLACED IN ESTABLISHED DRAINAGE DITCHES UNDER ANY CIRCUMSTANCES.
- TRENCH DEWATERING DEVICES WILL BE DISCHARGED IN A MANNER THAT WILL NOT ADVERSELY AFFECT FLOWING STREAMS, DRAINAGE SYSTEMS, OR OFF-SITE PROPERTIES. AN ESTABLISHED SEDIMENT TRAP WILL BE USED AS THE RECEIVER FOR ALL TRENCH DEWATERING OPERATIONS.
- ALL DISTURBED AREAS WILL BE SEEDED OR SODDED UPON COMPLETION OF WORK. THE CONTRACTOR WILL BE RESPONSIBLE TO ENSURE THAT COMPLETE COVERAGE OF THE DISTURBED AREAS IS PROVIDED AND THAT GROWTH OF VEGETATION IS ESTABLISHED. SEED AND SOD APPLICATIONS WILL BE CONDUCTED IN ACCORDANCE WITH THE TIMELINES NOTED IN THE MOST RECENT EDITION OF THE WSDOT STANDARD SPECIFICATIONS.
- ALL EROSION CONTROL WILL REMAIN IN PLACE UNTIL SUCH TIME AS THE SITE IS ADEQUATELY STABILIZED. PRIOR TO REMOVAL OF EROSION CONTROL MEASURES, THE ENGINEERING DIVISION WILL BE NOTIFIED FOR FINAL INSPECTION AND APPROVAL.



- INSTALL INSERT PER THE MANUFACTURERS SPECIFICATIONS.
- MAINTAIN AND REPLACE INSERTS AS RECOMMENDED BY THE MANUFACTURER, AS REQUIRED BY THE INSPECTOR OR PROJECT ENGINEER, AND AS OTHERWISE NECESSARY.

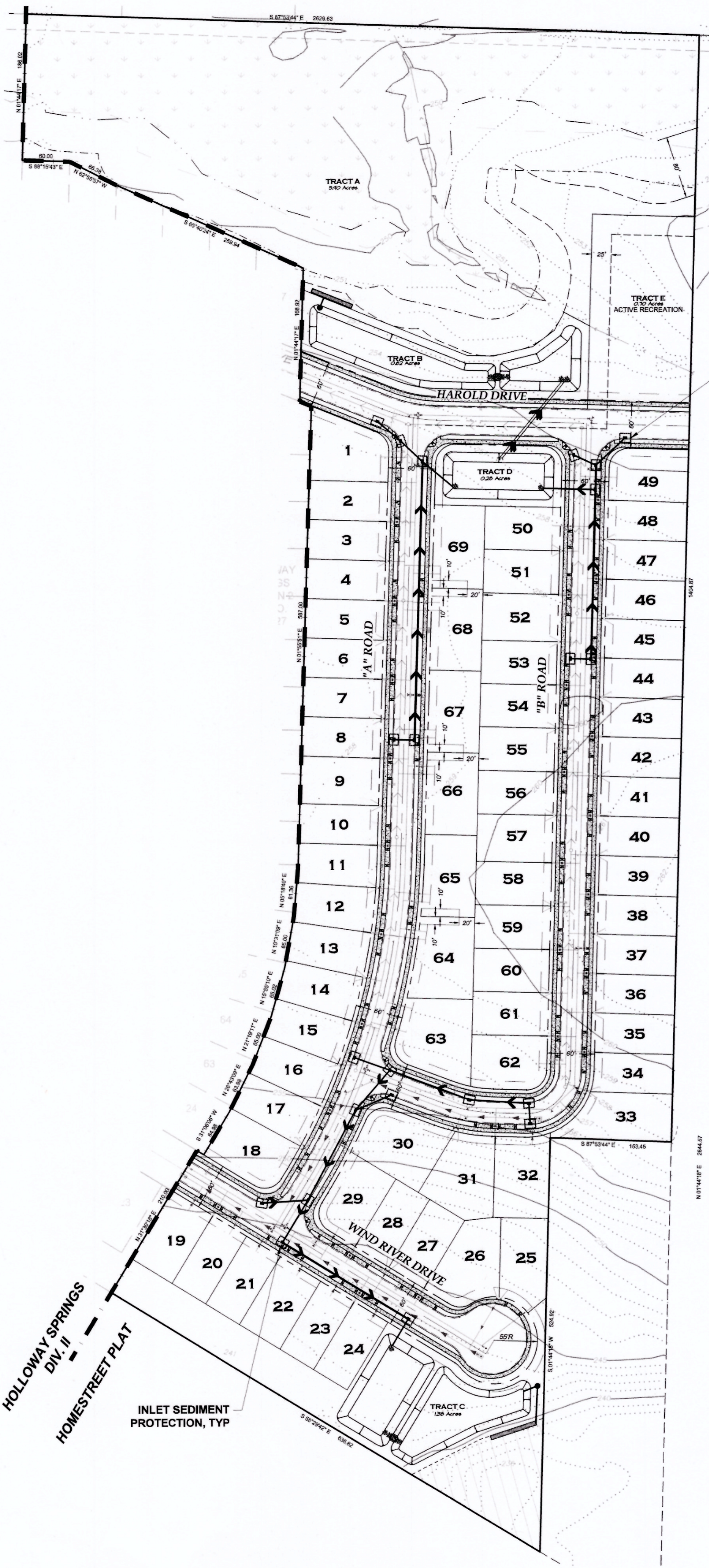
INLET SEDIMENT PROTECTION
N.T.S.



STABILIZED CONSTRUCTION ENTRANCE
N.T.S.

STABILIZED CONSTRUCTION ENTRANCE NOTES:

- MATERIAL SHALL BE 4 INCH TO 8 INCH QUARRY SPALLS AND MAY BE TOP-DRESSED WITH 1 INCH TO 3 INCH ROCK. (STATE STANDARD SPECIFICATIONS.)
- THE ROCK PAD SHALL BE AT LEAST 12 INCHES THICK AND 100 FEET LONG. WIDTH SHALL BE THE FULL WIDTH OF THE VEHICLE INGRESS AND EGRESS AREA. SMALLER PADS MAY BE APPROVED FOR SINGLE-FAMILY RESIDENTIAL AND SMALL COMMERCIAL SITES.
- ADDITIONAL ROCK SHALL BE ADDED PERIODICALLY TO MAINTAIN PROPER FUNCTION OF THE PAD.
- IF THE PAD DOES NOT ADEQUATELY REMOVE THE MUD FROM THE VEHICLE WHEELS, THE WHEELS SHALL BE HOSED OFF BEFORE THE VEHICLE ENTERS A PAVED STREET. THE WASHING SHALL BE DONE ON AN AREA COVERED WITH CRUSHED ROCK AND WASH WATER SHALL DRAIN TO A SEDIMENT RETENTION FACILITY OR THROUGH A SILT FENCE.



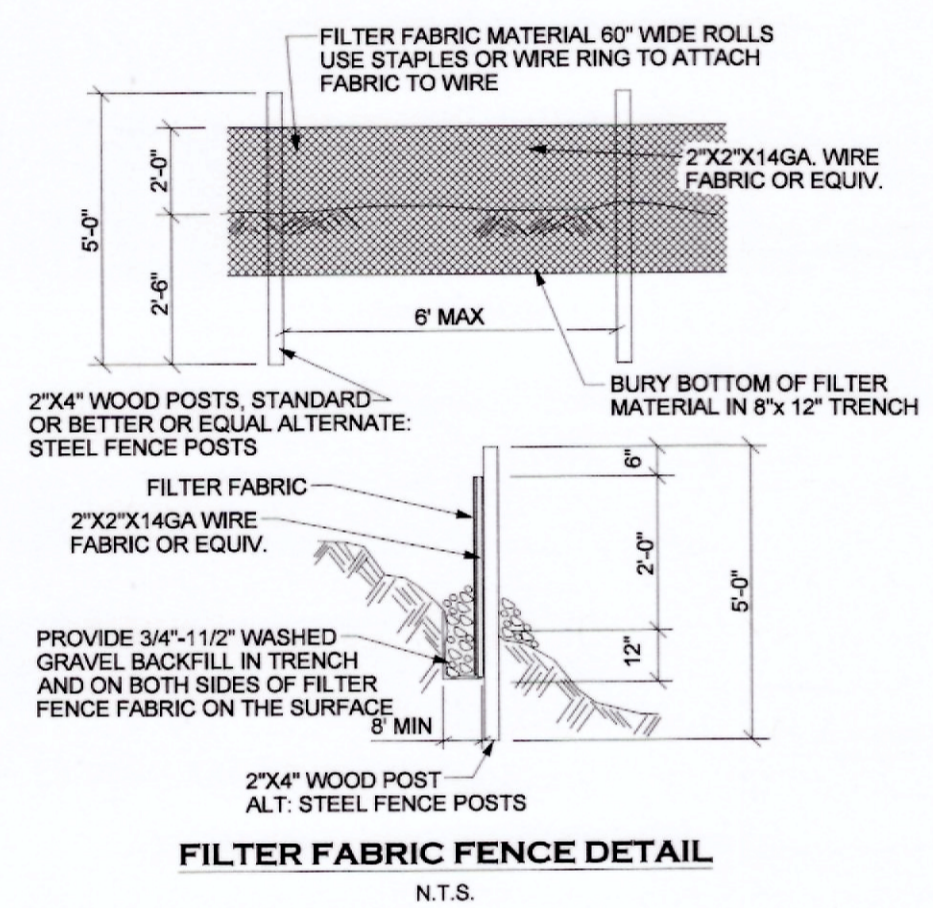
CITY OF CHEHALIS

VERTICAL DATUM NGVD 1929 CITY OF CHEHALIS	BASIS OF BEARING PLAT OF HOLLOWAY SPRINGS DIVISION 2 RECORDED UNDER AUDITOR'S FILE NO. 3274227
--	---

100 50 0 100 200
SCALE: 1" = 100'

LEGEND

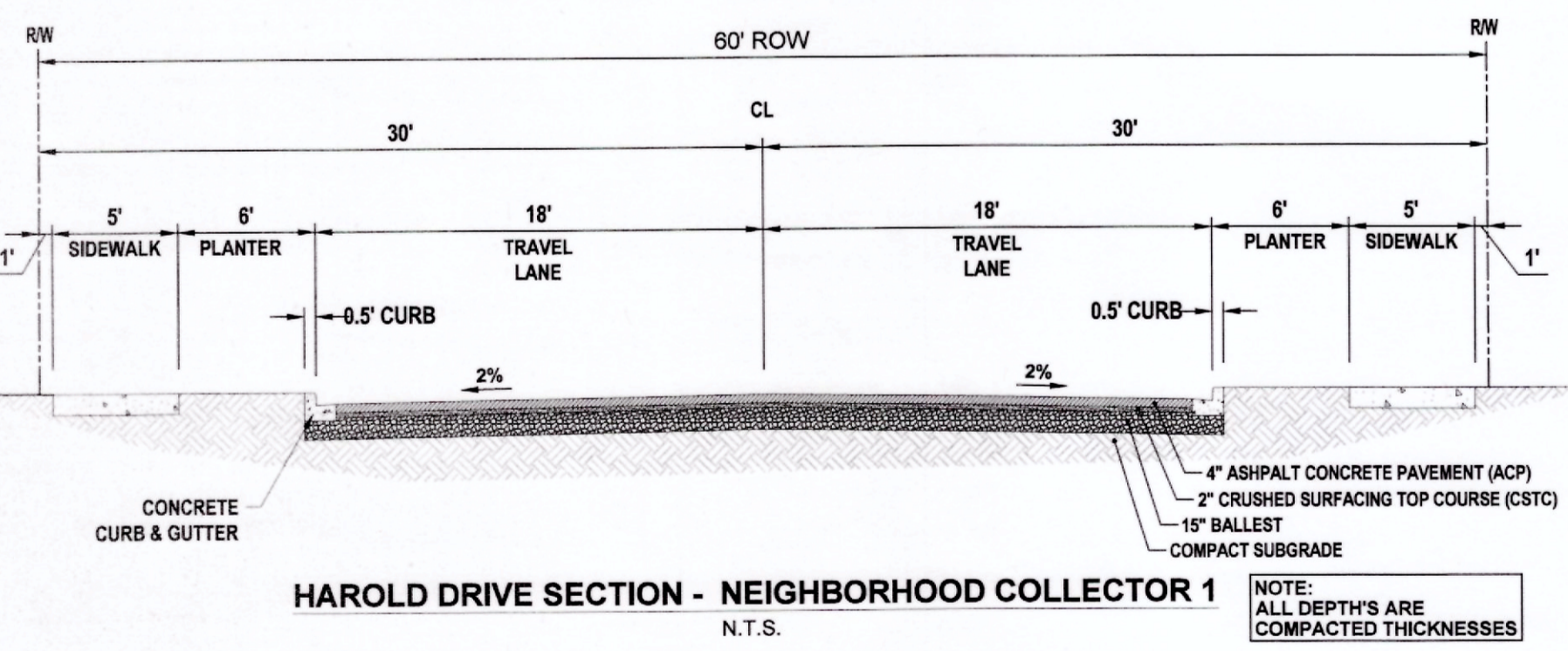
- CLEARING LIMITS
- - - HIGH VISIBILITY TREE PROTECTION / CLEARING LIMITS FENCING
- FILTER FABRIC FENCING
- INLET SEDIMENT PROTECTION



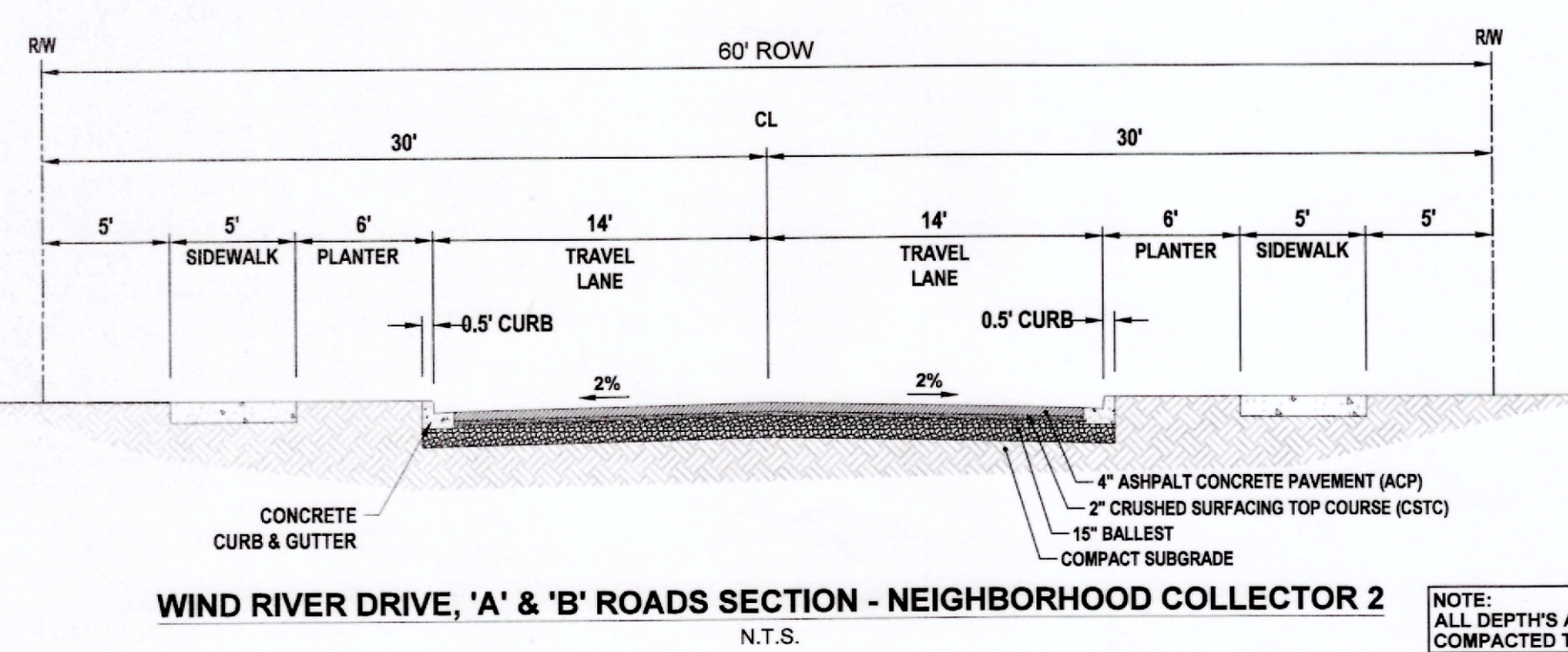
FILTER FABRIC FENCE DETAIL
N.T.S.

FILTER FABRIC FENCE NOTES:

- FILTER FABRIC SHALL BE PURCHASED IN A CONTINUOUS ROLL CUT TO THE LENGTH OF THE BARRIER TO AVOID USE OF JOINTS. WHEN JOINTS ARE NECESSARY, FILTER CLOTH SHALL BE SPLICED TOGETHER ONLY AT A SUPPORT POST, WITH A MINIMUM 6-INCH OVERLAP, AND SECURELY FASTENED AT BOTH ENDS TO POST.
- POSTS SHALL BE SPACED A MAXIMUM OF 6 FEET APART AND DRIVEN SECURELY INTO THE GROUND (MINIMUM OF 30 INCHES).
- A TRENCH SHALL BE EXCAVATED APPROXIMATELY 8 INCHES WIDE AND 12 INCHES DEEP ALONG THE LINE OF POSTS AND UPSLOPE FROM THE BARRIER.
- WHEN STANDARD STRENGTH FILTER FABRIC IS USED, A WIRE MESH SUPPORT FENCE SHALL BE FASTENED SECURELY TO THE UPSLOPE SIDE OF THE POSTS USING HEAVY-DUTY WIRE STAPLES AT LEAST 1 INCH LONG. THE WIRES OR HOG RINGS. THE WIRE SHALL EXTEND INTO THE TRENCH A MINIMUM OF 4 INCHES AND SHALL NOT EXTEND MORE THAN 36 INCHES ABOVE THE ORIGINAL GROUND SURFACE.
- THE STANDARD STRENGTH FILTER FABRIC SHALL BE STAPLED OR WIRED TO THE FENCE, AND 20 INCHES OF THE FABRIC SHALL BE EXTENDED INTO THE TRENCH. THE FABRIC SHALL NOT EXTEND MORE THAN 36 INCHES ABOVE THE ORIGINAL GROUND SURFACE. FILTER FABRIC SHALL NOT BE STAPLED TO EXISTING TREES.
- WHEN EXTRA-STRENGTH FILTER FABRIC AND CLOSER POST SPACING IS USED, THE WIRE MESH SUPPORT FENCE MAY BE ELIMINATED. IN SUCH A CASE, THE FILTER FABRIC IS STAPLED OR WIRED DIRECTLY TO THE POSTS WITH ALL OTHER PROVISIONS OF ABOVE NOTES APPLYING.
- FILTER FABRIC FENCES SHALL NOT BE REMOVED BEFORE THE UPSLOPE AREA HAS BEEN PERMANENTLY STABILIZED.
- FILTER FABRIC FENCES SHALL BE INSPECTED IMMEDIATELY AFTER EACH RAINFALL AND AT LEAST DAILY DURING PROLONGED RAINFALL. ANY REQUIRED REPAIRS SHALL BE MADE IMMEDIATELY.



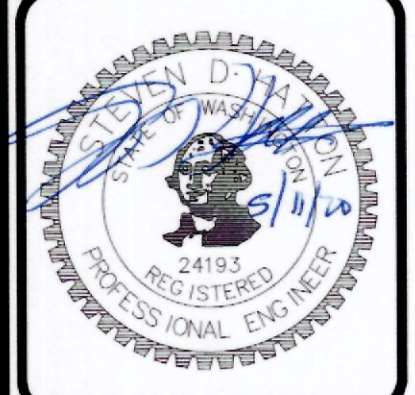
HAROLD DRIVE SECTION - NEIGHBORHOOD COLLECTOR 1
N.T.S.



WIND RIVER DRIVE, 'A' & 'B' ROADS SECTION - NEIGHBORHOOD COLLECTOR 2
N.T.S.

TOPOGRAPHIC NOTE:
THE EXISTING TOPOGRAPHIC DATA SHOWN ON THESE DRAWINGS HAS BEEN PREPARED, IN PART, BASED UPON INFORMATION FURNISHED BY OTHERS. WHILE THIS INFORMATION IS BELIEVED TO BE RELIABLE, HGP CANNOT ENSURE ITS ACCURACY AND THIS IS NOT RESPONSIBLE FOR THE ACCURACY OF THAT INFORMATION OR FOR ANY ERRORS OR OMISSIONS WHICH MAY HAVE BEEN INCORPORATED INTO THESE DRAWINGS AS A RESULT.

DESIGNED BY: DS
DRAWN BY: MJM
CHECKED BY: SDH
DATE: FEB 2020
SCALE: H 1" = 100'
V N/A



HATTON GODAT
ENGINEERS AND SURVEYORS
3910 MARTIN WAY E. SUITE B
OLYMPIA, WA 98506
TEL: 360.943.1599 FAX: 360.357.6299
hattonpantier.com

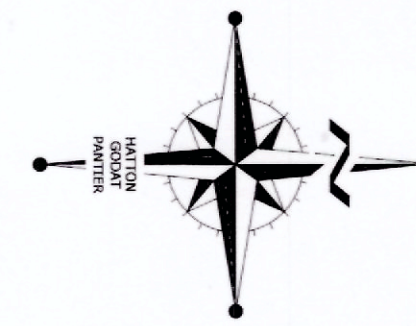
DATE: _____
REVISIONS: _____

HOMESTREET PLAT
DIVISION III PRELIMINARY SITE PLAN
TESC & DRAINAGE DETAILS

AGENCY NO. _____
SHEET: 3 OF 5
E:\dgn\19-000\19-059\Preliminary INDEX: 19-059-pre-ec.dwg
JOB: 19-059

TPN # 017875734078

A PORTION OF SECTION 14, TOWNSHIP 13 NORTH, RANGE 2 WEST, W.M.



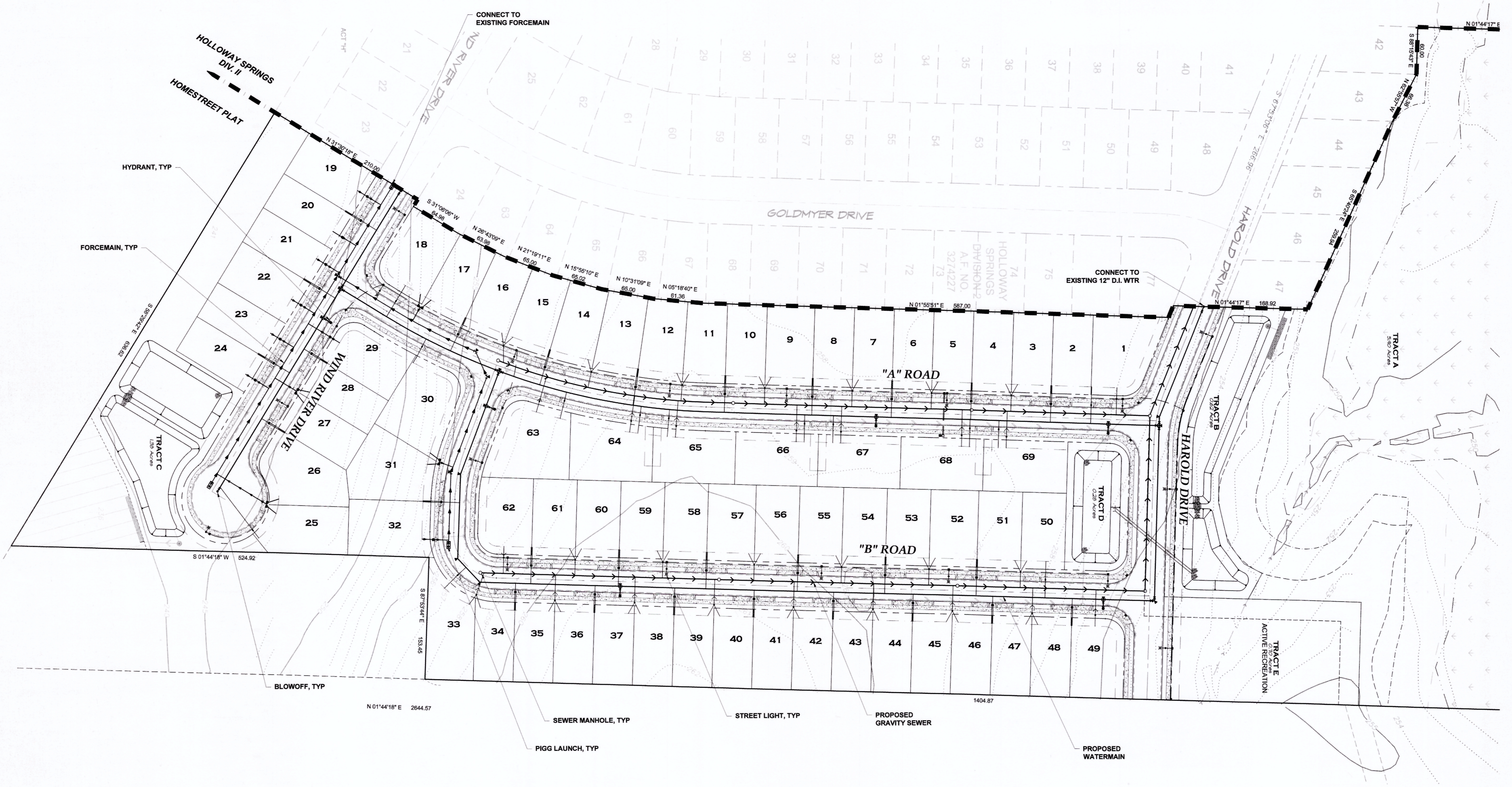
CITY OF CHEHALIS

VERTICAL DATUM
NGVD 1929 CITY OF CHEHALIS

BASIS OF BEARING
PLAT OF HOLLOWAY SPRINGS
DIVISION 2 RECORDED UNDER
AUDITOR'S FILE NO. 3274227

60 30 0 60 120

SCALE: 1" = 60'



DESIGNED BY: DS
DRAWN BY: MJM
CHECKED BY: SDH
DATE: FEB. 2020
SCALE: H #####
V N/A



HATTON GODAT
ENGINEERS
AND
SURVEYORS
3910 MARTIN WAY E, SUITE B
OLYMPIA, WA 98506
TEL: 360.943.1599 FAX: 360.357.6299
hattonpantier.com

REVISIONS:
DATE:

TPN# 017875734078

HOMESTREET PLAT
DIVISION III PRELIMINARY SITE PLAN
PRELIMINARY UTILITY PLAN

A PORTION OF SECTION 14, TOWNSHIP 13 NORTH, RANGE 2 WEST, W.M.

TOPOGRAPHIC NOTE:
THE EXISTING TOPOGRAPHIC DATA SHOWN ON THESE DRAWINGS HAS BEEN PREPARED, IN PART, BASED UPON INFORMATION FURNISHED BY OTHERS. WHILE THIS INFORMATION IS BELIEVED TO BE RELIABLE, HGP CANNOT ENSURE ITS ACCURACY AND THUS IS NOT RESPONSIBLE FOR THE ACCURACY OF THAT INFORMATION OR FOR ANY ERRORS OR OMISSIONS WHICH MAY HAVE BEEN INCORPORATED INTO THESE DRAWINGS AS A RESULT.

THIS DRAWING DOES NOT REPRESENT A RECORD DOCUMENT, UNLESS CERTIFIED BY HATTON GODAT PANTIER.
ANY ALTERATIONS TO THE DESIGN SHOWN HEREON MUST BE REVIEWED AND APPROVED BY HATTON GODAT PANTIER.

NOTE: THE CONTRACTOR SHALL BE FULLY RESPONSIBLE FOR THE LOCATION AND PROTECTION OF ALL EXISTING UTILITIES. THE CONTRACTOR SHALL VERIFY ALL UTILITY LOCATIONS PRIOR TO CONSTRUCTION BY CALLING THE UNDERGROUND LOCATE LINE AT 1-800-424-5555 A MINIMUM OF 48 HOURS PRIOR TO ANY EXCAVATION.

AGENCY NO.
SHEET: 4 OF 5
E:\sg\19-000\19-059\Preliminary
INDEX: 19-059-pre-utility.dwg
JOB: 19-059

PRELIMINARY LANDSCAPE OF HOLLOWAY SPRINGS

DIVISION III

PREPARED FOR

HOMESTREET DEVELOPMENT, LLC
1868 STATE AVE NE
OLYMPIA, WA 98506

SITE DEVELOPMENT

SITE ADDRESS:
RUSH RD
CHEHALIS, WA
98532

PARCEL NO: 17875007003, 17875007004
S/T/R: SEC. 14, T. 13N., RGE. 2W.,
JURISDICTION: LEWIS

SITE AREA: 24.34 AC
ZONING: RUGA - RESIDENTIAL IN UGA
SETBACKS:

FRONT: 20'
SIDE: 20'
REAR: 20'

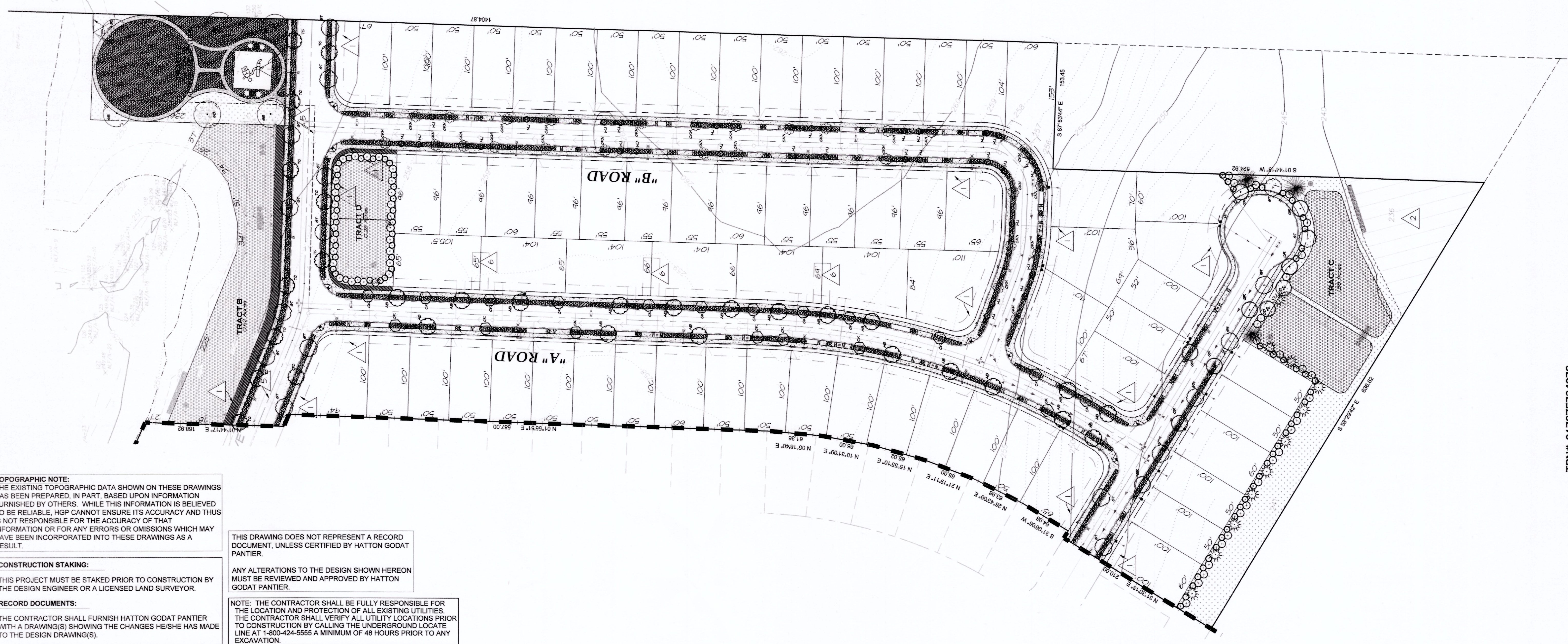
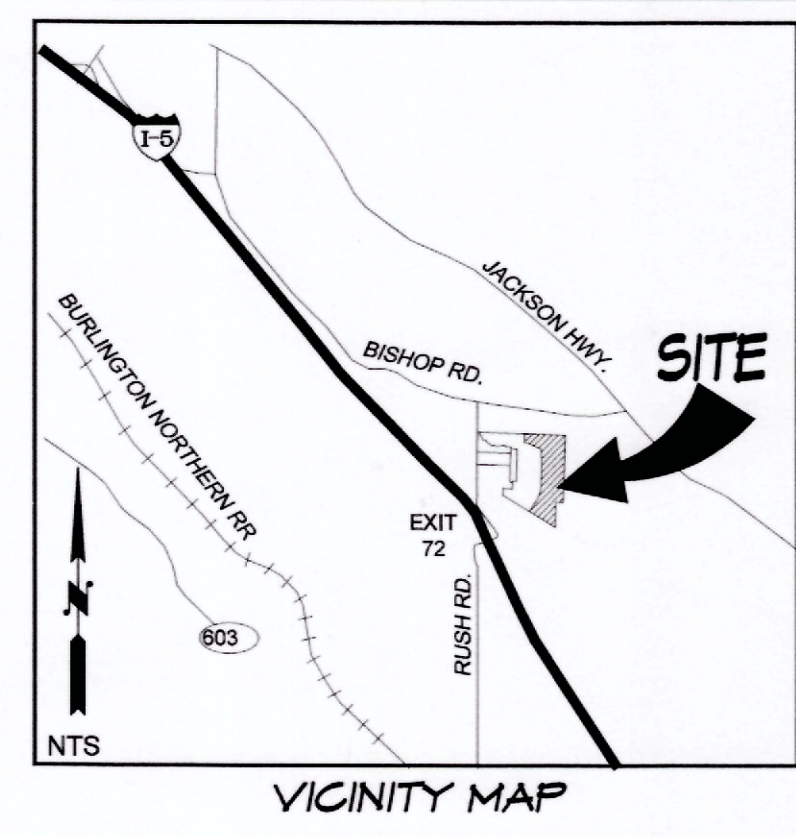
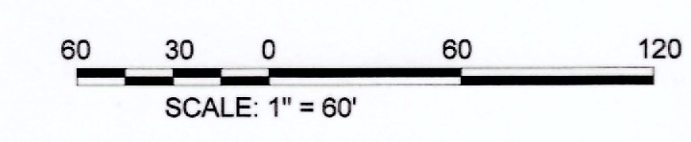
WATER:
SEWER:
ELECTRIC/GAS: PUGET SOUND ENERGY

OPEN AREA:
30% OPEN SPACE REQ.
2.87 OPEN SPACE / 9.54 AC
TOTAL OPEN SPACE: 30%

PLANT SCHEDULE		SIZE = CALIPER OR SPREAD					
QTY.	SYM.	SCIENTIFIC NAME	COMMON NAME	SYM.	SIZE	CONDITION	REMARKS
TREES							
18	AB	ACER DIERSKIANUM	TRIDENT MAPLE	⊙	2" CAL.	B and B	DECIDUOUS / MULTI-TRUNKED
10	CD	CEDRUS DEODORA	DEODORA CEDAR	⊙	2" CAL.	B and B	DECIDUOUS / SINGLE STEM
18	CK	CORNUS KOUSA MILKY WAY	MILKY WAY DOGWOOD	⊙	2" CAL.	B and B	DECIDUOUS / SINGLE STEM
27	CKN	CORNUS KOUSA N. NIT.	STARLIGHT DOGWOOD	⊙	2" CAL.	B and B	DECIDUOUS / SINGLE STEM
6	SB	SINIKO DILLOBA	SINIKO PRINCECEN BENTY	⊙	1.5" CAL.	B and B	DECIDUOUS / SINGLE STEM
20	BT	SLIDTISIA T. S.MASTER	SHADE MASTER HNY LOCUST	⊙	2" CAL.	B and B	DECIDUOUS / MULTI-TRUNKED
24	HJ	MALUS X. 'ADIRONDACK'	ADIRONDACK CRABAPPLE	⊙	1.5" CAL.	B and B	DECIDUOUS / SINGLE STEM
3	PV	PINUS F. 'VANDERKOLP'	VANDERKOLP PINE	⊙	6" - 7"	B and B	EVERGREEN / SINGLE STEM
10	TP	TALIA FLICATA	WESTERN RED CEDAR	⊙	6" - 7"	B and B	EVERGREEN / SINGLE STEM
11	TC	TILIA GORDATA 'HALKA'	SUMMER SPRITE LINDEN	⊙	2" CAL.	B and B	DECIDUOUS / MULTI-TRUNKED
4	OR	QUERCUS R. 'AUTUM BLAZE'	AUTUMN BLAZE OAK	⊙	2" CAL.	B and B	DECIDUOUS / MULTI-TRUNKED
SHRUBS							
54	○	RHAMNUS PURSHIANA	CASCARA	1.75" CAL.	B and B	B	DECIDUOUS / MULTI-TRUNKED
64	○	VIBURNUM RHY.	LEATHERLEAF VIBURNUM	#0	CONTAINER	B	EVERGREEN
GROUND COVER							
		BABY'S BREATH CORN FLOWER DWARF HYDRANGEA DWARF GERANIUM DWARF PANSY DWARF PINK DWARF PRIMULA DWARF ROSE DWARF VIOLET DWARF YUKON BLUE DWARF ZINNIA BLACK EYED SUSAN CORONILLA FLAX MILD PERENNIAL LUPINE	REMOVE/GRUB UNWANTED PLANTS/GRASS FROM SITE. REMOVE ALL DEBRIS. MAKE SURE THAT THE SEED FALLS ON BARE SOIL. SOON NATIVE FLOWERS MAY AT 12 LBS PER ACRE MIX WITH ANNUAL RYE AS A COVER CROP UNTIL PERENNIAL FLOWERS CAN GERMINATE AND ESTABLISH. MIX SEED WITH SAND/SOY SAND TO BROADCAST. BROADCAST WITH ROTARY SEEDER FOR BEST RESULTS. COMPRESS SEEDS WITH ROLLER. MOW IN LATE FALL AT 1" IN THE FIRST YEAR. MOW IN FALL AT 1" IN SECOND YEAR.				
HYDROSEED							
		PER CIVIL PLAN					
		RUBUS SPECTABILIS ARGOSTAPHYLOS UVA-URSI MAHONIA REPENS	SALMONBERRY KINNIKINICK LOW OREGON GRAPE	2 GAL. 1 GAL. @ 36" O.C.			
		HYDRO-SEED LAWN AREAS					
		WOOD CHIP WALKING TRAIL PICNIC TABLE BENCH					



CITY OF CHEHALIS
VERTICAL DATUM
NGVD 1929 CITY OF CHEHALIS
BASIS OF BEARING
PLAT OF HOLLOWAY SPRINGS
DIVISION 2 RECORDED UNDER
AUDITOR'S FILE NO. 3274227



TOPOGRAPHIC NOTE:
THE EXISTING TOPOGRAPHIC DATA SHOWN ON THESE DRAWINGS HAS BEEN PREPARED, IN PART, BASED UPON INFORMATION FURNISHED BY OTHERS. WHILE THIS INFORMATION IS BELIEVED TO BE RELIABLE, HGP CANNOT ENSURE ITS ACCURACY AND THUS IS NOT RESPONSIBLE FOR THE ACCURACY OF THAT INFORMATION OR FOR ANY ERRORS OR OMISSIONS WHICH MAY HAVE BEEN INCORPORATED INTO THESE DRAWINGS AS A RESULT.

CONSTRUCTION STAKING:
THIS PROJECT MUST BE STAKED PRIOR TO CONSTRUCTION BY THE DESIGN ENGINEER OR A LICENSED LAND SURVEYOR.

RECORD DOCUMENTS:
THE CONTRACTOR SHALL FURNISH HATTON GODAT PANTIER WITH A DRAWING(S) SHOWING THE CHANGES HE/SHE HAS MADE TO THE DESIGN DRAWING(S).

THIS DRAWING DOES NOT REPRESENT A RECORD DOCUMENT, UNLESS CERTIFIED BY HATTON GODAT PANTIER.

ANY ALTERATIONS TO THE DESIGN SHOWN HEREON MUST BE REVIEWED AND APPROVED BY HATTON GODAT PANTIER.

NOTE: THE CONTRACTOR SHALL BE FULLY RESPONSIBLE FOR THE LOCATION AND PROTECTION OF ALL EXISTING UTILITIES. THE CONTRACTOR SHALL VERIFY ALL UTILITY LOCATIONS PRIOR TO CONSTRUCTION BY CALLING THE UNDERGROUND LOCATE LINE AT 1-800-424-5555 A MINIMUM OF 48 HOURS PRIOR TO ANY EXCAVATION.

DESIGNED BY: CAUCH
DRAWN BY: JCH
CHECKED BY: CAUCH
DATE: FEB. 2020
SCALE: H. AS SHOWN



HATTON GODAT PANTIER
ENGINEERS AND SURVEYORS
3910 MARTIN WAY E, SUITE B
OLYMPIA, WA 98506
TEL: 360.943.1599 FAX: 360.357.6299
hatterpantier.com

REVISIONS:
DATE:

HOLLOWAY SPRINGS
DIVISION III PRELIMINARY SITE PLAN
PRELIMINARY LANDSCAPE PLAN

AGENCY NO.
SHEET: 5 OF 3
INDEX:
JOB: 19-059

TPN# 017875734078

A PORTION OF THE SOUTHWEST QUARTER OF SECTION 14, TOWNSHIP 13 NORTH, RANGE 2 WEST, WA 4