

Inventory of Historic Resources
Chehalis, Washington

**AN INVENTORY OF HISTORIC RESOURCES
in
THE CITY OF CHEHALIS, WASHINGTON**

Prepared by
**The Department of Community Services
City of Chehalis**

with assistance from

The Phoenix Group, Inc.
Community Planning and Development
1139 34th Avenue
Seattle, Washington 98122

This inventory was funded by:
The City of Chehalis
and

**The Office of Archeology and Historic Preservation,
Department of Community Development, State of Washington**

August 1987

INTRODUCTION

Over the past few years, the need to identify and document the historic buildings and places in Chehalis has been discussed several times. At the same time, growing concern about deterioration and vacancies in the central business district led to formation of an ad hoc downtown revitalization committee. The downtown committee requested the City to consider establishing a downtown historic district to encourage conservation and renovation of downtown historic buildings. In response to the specific downtown concerns and the general concerns about identifying and encouraging the conservation of historic buildings throughout the City, an historic conservation ordinance was developed, an historic commission was developed, and an inventory of historic places was undertaken as a first step in encouraging the conservation of the City's historic resources.

This report provides an overview of the history of the City of Chehalis and describes the major development trends. The methodology used to identify potentially historic buildings is included along with a list of all of the inventoried properties. This report concludes with the recommendations of what should be done next to encourage the conservation of the identified resources.

HISTORICAL DEVELOPMENT

PRE-EUROPEAN HISTORY

Prior to settlement of the Chehalis area by Europeans, the Valley of the Chehalis River was inhabited primarily by the Chi-Ha-Lis people (Upper Chehalis Tribe). They were linguistically and culturally related to the Coast Salish people who inhabited the Willapa and Grays Harbor vicinities. The Upper Chehalis Tribe conducted the historical trading trail over which the Chinook people to the East of the Cascade Mountains traded with the Coast Salish of Shoalwater Bay (Willapa).

Although no significant archeological remains exist in present day Chehalis, the river valley, especially in the vicinity of the confluence of the Chehalis and the Skookumchuck Rivers, plays a prominent role in the verbal history of the Chehalis people. For example, in the story of Honne, the spirit of the Chehalis, the first human, Honne, is placed on the Earth by the creator near the two rivers. Honne then wanders the valley observing and naming the creatures of the earth, the air and the water. From Honne is born humankind, as varied in attributes as the animals of creation.

THE SETTLEMENT PERIOD

Lewis County was named after Meriwether Lewis, the renowned explorer of the Northwest. During the period of initial settlement, the environs of present day Chehalis was known as Saunders' Bottom and was largely owned by Judge O.B. Schuyler and Eliza Saunders. At that time Lewis County "embraced half of the state and practically all of British Columbia" (1) and the village of Claquato, which preceded Chehalis as County seat, was "scarcely more than a trading post" (2). There were probably

O.B. Schuyler and Eliza Saunders. m.d.s.

no more than 400 settlers in all of the county, with the Chehalis River valley being the least sparsely populated.

It was into this frontier that William West, who was to become known as "The Father of Chehalis", arrived in the Fall of 1864 by way of the Oregon Trail and up the Cowlitz River. In his journals, partially published in the Chehalis BEE-NUGGET HISTORICAL SOUVENIR EDITION of May 14, 1915, Mr. West lists all of the homesteads lying in and around Saunders' Bottom, including the 1859 log cabin summer residence of Judge McFadden (Map Location # 192), which is the oldest residence yet standing in Chehalis and probably in the County.

For the most part, the early settlers took on the life of farmers and homesteaders. They eked out a subsistence living, while clearing the land for more crops and stock. Logging took place primarily as required for clearing of land and construction of necessary structures, as transportation problems made commerce difficult at best. To quote Mr. West, "The bad condition of our roads was a great hindrance to the profitable transportation of our products to market and which in winter was almost impossible."⁽³⁾

The rivers provided the best means of transportation to market through the winter months. Most of the farmers owned canoes which they used to carry their goods to the Borst Blockhouse on the Skookumchuck River from whence they were carried by wagon to Olympia. In 1866 Mr. J.T. Browning, storeowner and general merchant of Claquato, had built a steamer, the "Carrie Davis", which was used to carry goods from Saunders' Bottom and vicinity down the Chehalis River and up the Black River to within 10 miles of Olympia. This marked the beginning of serious commerce from the Chehalis River valley.

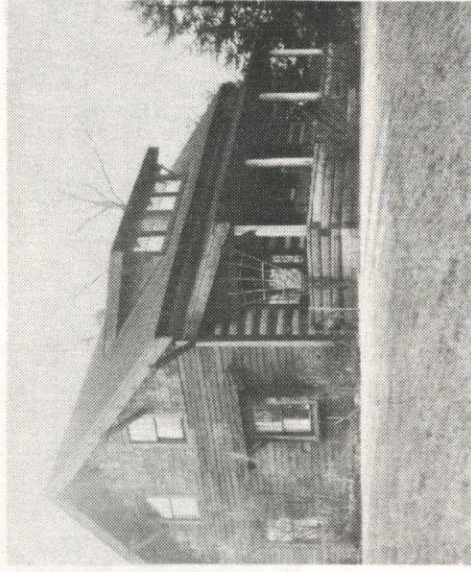


William West
"Father of Chehalis"

In the meantime, other events were taking place which eventually solved the area's transportation problem. In 1868 the Northern Pacific Railroad was chartered and received a land grant of every other section of land for a forty mile wide strip extending from Lake Superior to Puget Sound. In return the railroad was to build tracks across the Rocky and Cascade mountains to connect Puget Sound with the east coast.

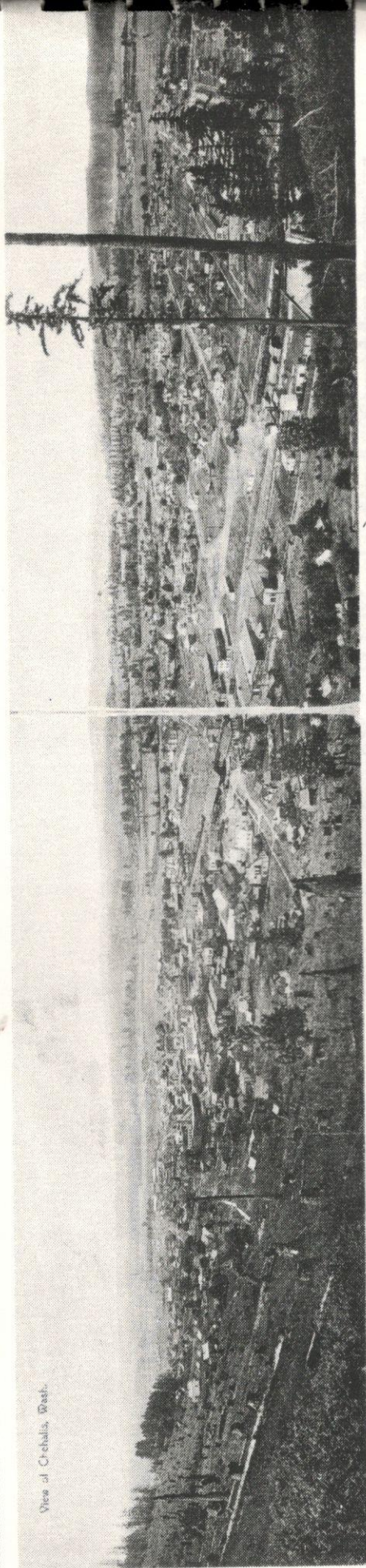
In 1872 a rail line was built from the Columbia River at Kalama to Tacoma. The railroad refused, however, to create a stop in the area of Saunders' Bottom, deciding instead to plat a town on its own land at Newaukum three miles of muddy road to the south. In order to compel trains to stop in a location accessible to their goods, the farmers of Saunders' Bottom set up a flag stop and in 1872 began construction of a warehouse along side the tracks. This was the first commercial building constructed in what was to become Chehalis, as well as the first organized business. The warehouse was capitalized through a \$10 per share stock subscription listed in the names of: William West, John Alexander, L.A. Davis, A.P. Scammon, William Pulsifer, W.A. Eadon, O.B. McFadden, Lorenz Boisen, J.H. Long, Thomas Waterbury, George J. Hogue, A.F. Tullus, J.T. Newland, R.H. Miller, and Joseph Clare.

Having secured transportation facilities from the railroad and a completed warehouse, George J. Hogue of Claquato constructed a branch store nearby. Thus began the commercial development of Chehalis. Shortly thereafter efforts were begun to have the County seat moved from Claquato to Chehalis.



*Mc Fadden Log Cabin
475 N.W. Chehalis Ave.
1859
Map Location #192*

View of Chehalis, Wash.



THE TOWN IS BORN

The petition to move the county seat from Claquato to Chehalis was opposed locally primarily by the railroad, which wanted to have the seat located at its own town of Newaukum. In 1874, a bill was passed in the Territorial Legislature which designated Chehalis as the Lewis County Seat, providing that the County would pay only \$1,000 of the cost of the new courthouse.

Noah Bosworth, George J. Hogue, John Dobson, J.T. Newland, and William West signed the necessary bonds to cover any excess costs and the courthouse was completed in June, 1874 at a cost of slightly over \$3,000. It was dedicated on the Fourth of July with a grand ball, speeches, games and a gala celebration.

The courtroom was also used as a schoolroom by School District 3 until 1876, when the pressure of County business made it necessary to build a schoolhouse. By June of that year, a 10 mil tax was levied and a call for bids was issued for construction of the first Chehalis school. William West was listed on the call for bids as the first school board chairman.

As new settlers were moving into the upper Chehalis valley, and as the Chehalis station was the principal shipping point in the valley, a movement was started to construct a bridge across the Chehalis River to the North. The County Commissioners were reluctant to raise public funds with which to build the bridge so the farmers and merchants called a public meeting and asked for subscriptions for the purpose. The movement was immediately successful and the first bridge across the river in Chehalis was built in 1877.

Don't this the built park by first bridge-builder funding near Allyn and S. subscription M.D.S.

The next year saw the first manufacturing-type venture in the valley in the form of the West & Dobson Packing House. It sprang to life out of necessity. Born of a price dispute between Victoria meat packers and local farmers, it proved successful from the outset. The next businesses to start-up and prosper were the Roudebush and Botham Flour Mill and the sawmill owned by Wadhams and Elliot of Portland. Both were built prior to 1880.

The growing importance and political strength of the area was attested to in 1881 when Chehalis was chosen as the site of the State Reform School for boys and girls. A 50 acre site on the outskirts of the town was selected, and plans for three buildings were prepared by the architect T.G. Bird. The school was opened on June 10, 1891 with Thomas Westendorf as the first superintendent. The name of the school was changed after 1906 to the Green Hill School (Map Location #212), and the present structure was subsequently built.

The building then built. Have all 1906 building. These 1906 M.D.S.

In fall of 1882 the Grange sponsored an exhibit of locally produced goods in the County courthouse. It proved so successful that a \$5.00 stock subscription was drawn up and sold, which resulted in the establishment of the first Lewis County Fair. Land was purchased, buildings were constructed, and articles of incorporation were filed in Olympia on November 29, 1882.

1881 1890 built school M.D.S. 1906 original copy

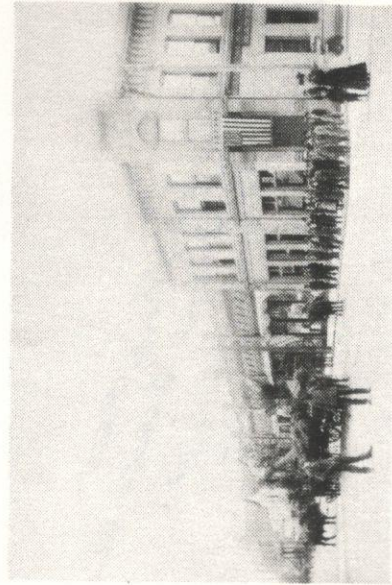
In the summer of 1883 Chehalis' first newspaper was founded. The Chehalis Nugget, established by Messrs. Mayfield and Tozier, was first published in August of that year.

During the fall of the same year meetings were held in Chehalis for the purpose of incorporating the town. The articles of incorporation were drawn up by J.E. Willis and were promptly adopted by the State legislature. On December 21, 1883 the first meeting of the Chehalis town council was held. A.F. Tullus was Mayor; J.E. Willis, City Clerk; U.E. Harmon, City Attorney; and T.L. Holloway, M.D. Roudebush, John Scott, H.J. Brooks, and W.H. Long were council members.

DEVELOPMENT OF THE COMMUNITY AND THE ECONOMY

With the completion of the Northern Pacific Railroad, it became much easier for settlers to travel from the East. It took fewer days for them to travel by rail than it took the earlier settlers months traveling by "prairie schooner". Businesses began to prosper, and new ones were established, such as the hardware and general merchandise store of Frank Everett in 1883. The first bank in Southwest Washington was founded in Chehalis in 1884 by N.B. Coffman and C.H. Allen. The bank was a success and, in just a few years, it was reorganized as a State Bank under the name of Coffman, Dobson and Company (Map Location #135).

G.O. Gingrich arrived in 1886 to open the grocery business which was to be but the first of his successful ventures, including purchase of the Chehalis Furniture



*Coffman & Dobson Bank
ca. 1884
475 N. Market Blvd.
Map Location #135*

and Manufacturing Company and organization of the Chehalis National Bank in 1909.

As the economy grew, so the social fabric of the community began to take form. A movement to build churches was begun in 1884 under the auspices of the Reverends J.B. Brouillette of the Presbyterian Board of Missions and R.D. Nevius, D.D. of the Episcopal Church. Churches for both congregations were started the following summer and were completed that same autumn (Map Location # 143). During the next two decades Baptist, Catholic, Christian (Map Location #164), Lutheran, and Methodist (Map Location #102) churches were built and consecrated.

In 1885 the Chehalis Cemetery Association was formed, Articles and By-laws were drawn up, and land was purchased and platted. The Articles of Incorporation were filed on May 23, 1885.

By the time Statehood was realized in 1889, Chehalis had become a well formed and prosperous town of 1,300 people. It was important not only as a center of commerce with a bustling commercial core, but also had considerable political influence in Lewis County and in the territory. S.H. Berry was elected as one of the two delegates from Lewis County to the Washington State Constitutional Convention held in Olympia beginning on July 4, 1889.

That same year the Citizens' Club of Chehalis was formed for the purpose of actively supporting civic progress and public affairs. It was to get ample opportunity to pursue its civic purposes after the fire of 1892 which destroyed most of Chehalis' business district.



*Westminster Presbyterian Church
349 N. Market Blvd.*

ca. 1900

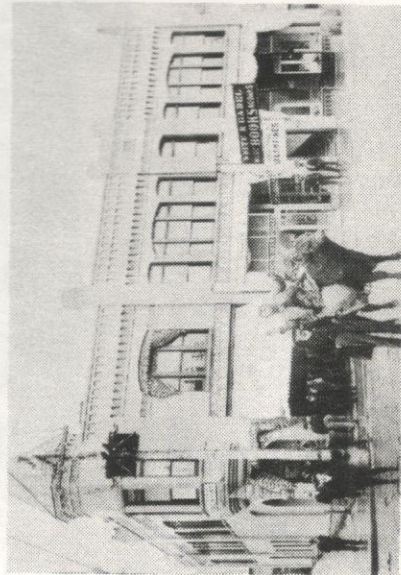
Map Location #143

DOWNTOWN RECONSTRUCTION AND DEVELOPMENT

Reconstruction of Chehalis' downtown was in full swing by the end of the 1890's. Construction of new commercial buildings took place in generally the same location as those businesses which preceded them. This was due in large part to the foresight of the original developers. Their plan was to influence the scale and direction of subsequent development by constructing on the principal corners of the downtown core large, modern buildings which would force similar infill development. To implement this plan, they formed a joint development corporation, pooled their downtown land, and hired an architect to design buildings for each corner of the blocks.

As more area for commercial development was needed, the area was expanded by relocation of residential structures rather than locating new commercial uses in different areas. The downtown district was developed practically to its existing size by the late 1920's and most of the present structures therein were built prior to 1938. The commercial buildings in downtown Chehalis reflect the prevailing architectural styles of the late 19th and early 20th centuries. They are generally Italianate, reflecting the Chicago commercial style, with a number of the older buildings in the Queen Anne style, and some of the newer buildings being Mission Revival.

The Coffman Building (Map Location #120) which contained the Citizens Club and H.C. Coffman's realty and insurance firm was one of the first new buildings in downtown Chehalis. Also in tenancy, until construction of their own building next door in 1906, was the firm of Hartman and Nathan, Clothiers (Map Location #119).



Gem Drug Store
486 N. Market Street
1890

Map Location #130

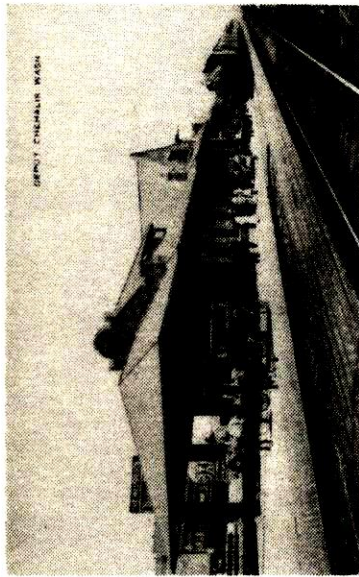
Also among the first of the post-fire buildings was the Grand Opera House (Map Location #152) built by William Brunswig around the turn of the century. The upper floors were designed as an opera house and public auditorium, while the lower floor was used for retail trade. The building was the center of public amusements until a fire in the adjoining building in 1907 limited the use of the upper floors.

Other representative, turn of the century, buildings in downtown Chehalis are the Royal Bakery (Map Location #161), built in 1902 and the Washington Hotel (Map Location #123).

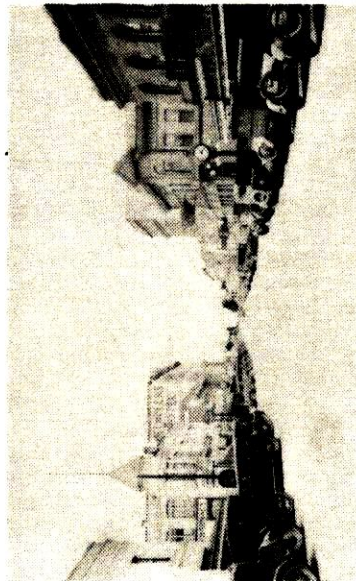
The previously mentioned Hartman & Nathan Building and the Saindon / Garbe Building (Map Location #158) were constructed in 1906 and 1907. The latter was built by John Garbe, the valley's largest hops dealer. The upper floors housed Garbe's hotel, while the lower floor was leased by Chehalis' largest mercantile business, the Saindon Company.

The next decade was one of dramatic growth in downtown Chehalis. 1913 saw the construction of the Northern Pacific Railroad Depot (Map Location #146). In its announcement on April 4, 1912, the Chehalis BEE-NUGGET stated that the railroad's intention was to construct a new depot "of brick, cement and stone, with a slate roof."⁽⁴⁾ That summer it was completed.

Arthur St. John built his garage (Map Location #133) which was to become the St. Helens Theater, and the San Juan Arms (Map Location #140) on opposite sides of the block and connected them with a service tunnel for a common heating plant.



Northern Pacific Depot
569 N.W. Front Street
1912
599
Map Location #146



Market Street
1920's

In 1914 the old Baptist Church at the corner of Chehalis Avenue and Center Street was moved to make room for a new three-story brick commercial structure for David Cohn and Nathan Mintzer (Map Location #162).

1918 witnessed the construction of The Smoke Shop (Map Location #127) on Market Street, and, more importantly, the replacement of the original wooden St. Helens Inn (Map Location #134) with a modern masonry structure designed by the architect C.E. Troutman. The building was constructed in sections, the first started in 1917, the second in 1918, and the top two stories were added in 1921.

Numerous infill buildings were constructed during the 1920's including the Judd Building (Map Location #139) at 433 N. Market; the Elks Club (Map Location #137) at 463 N. Market; and Moore's Men Store (Map Location #136) at 465 N. Market. The latter is one of the oldest continuously operating men's clothing stores in the Northwest.

Public and institutional buildings constructed downtown during the period include the Lewis County Courthouse (Map Location #170) built in 1927; the Masonic Temple (Map Location #172), 1932; and the U.S. Post Office (Map Location #166), a WPA project built in 1933. Postmaster Jesse R. Imus oversaw the building's dedication in the spring of 1934.

Meanwhile, industry was growing in the areas around Chehalis such as the World's first continuous rectification plant, J.P. Callison & Sons (Map Location #105), built around 1900. The Chehalis Brick and Tile Company (Map Location #104) was founded in 1902, and The Creamery (Map Location #205) in 1914. Other significant commercial enterprises developed during the period include the Rainier Cross Arms Company (Map Location #177); the Darigold Company

J.P. Callison

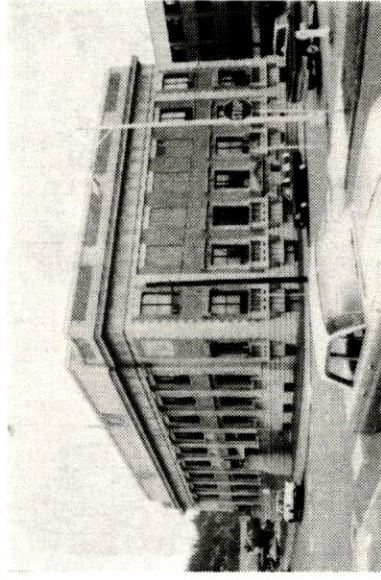
(Map Location #175); the West Side Grocery Company (Map Location #110) in 1915; and the Wibra & Cloud Greenhouses (Map Location #103) in 1935.

HOUSING THE POPULACE

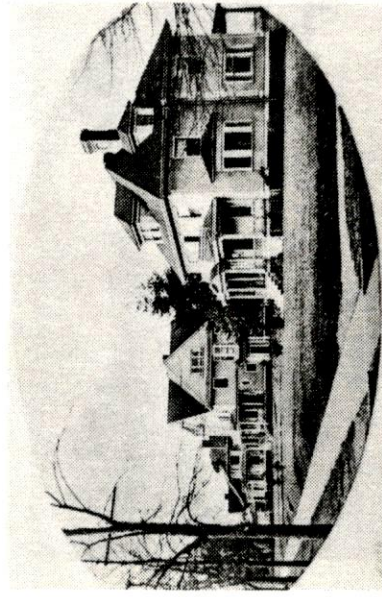
Beginning with the previously mentioned log house of O.B. McFadden, historical residential architecture in Chehalis is varied in both size and style. Homes range from Queen Anne, Italianate, Tudor and Colonial Revival mansions, and the Craftsman style bungalows of the Hillside and Pennsylvania Districts; to the vernacular cottages and bungalows of the millworkers along Prindle Street and Washington Avenue.

The earliest modern houses date from the late 1800's and include Map Location #20 in the victorian shingle style (1876); Map Location #32 in the American Foursquare style (1880); the Queen Anne style Rush Home (Map Location #67) dating from 1893; and the St. John Home (Map Location #64), built in 1895 in the Folk Victorian style.

As Chehalis prospered after the turn of the century, there was a boom in construction of all types and sizes of homes, for the most part, on the higher ground around the city center. Of note are the mansion-like homes of the most prominent of the City's citizens, generally located in the Pennsylvania and Hillside Districts. The Urquhart Home (Map Location #60), the Burnett Mansion (Map Location #57), and the N.B. Coffman Home (Map Location #42) are representative of those constructed in 1900. Dr. Dow's house (Map Location #70) was built in 1904, with the Parrish Home (Map Location #63) being completed in 1906.

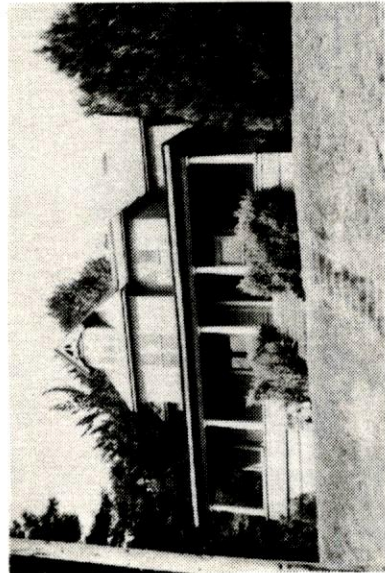


County Courthouse
ca. 1927
Map Location #170

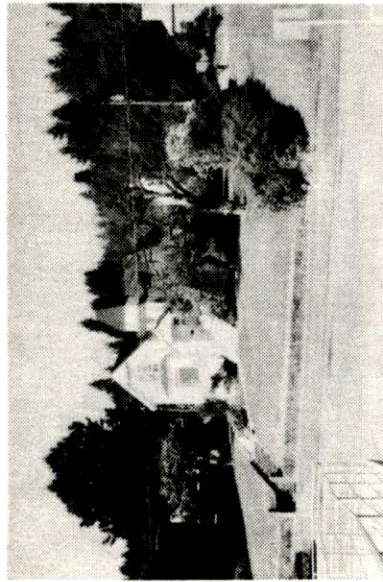


N.W. Pennsylvania Ave.
A.G. Coffman Home in the Foreground
565 N.W. Pennsylvania
1906
A.L.
Map Location #27

There was a mill at the end of Prindle near the river 1890-1910 also furniture & grocery factories on Chestnut Gate St. Also forerunner of Palmers Lbr Co - ca 1900



Rush Home
427 N.E. Washington
ca. 1895
Map Location #67



Urquhart Home
540 N.E. Adams
ca. 1900
Map Location #60

are these reversed

the Prindle Co. was the furniture factory

The Prindle Street Millworkers Housing was constructed between 1900 and 1920 to house workers of the Rainier Cross Arms Company and the Henry Date Lumber Mill. The Washington / Adams Avenue Millworkers houses were constructed during the 1920's to supplement the Prindle Street housing.

Henry Date was not here so early

POPULATION HISTORY

Most of the development of Chehalis and Lewis County occurred between 1880 and 1910, as the following population chart indicates. Over the twenty years from 1890 to 1910, the population in Chehalis increased by 244%. During the seventy years since 1910, the City's population has increased by only 35%.

Chehalis Population History	Lewis County Population History
1880— not available	1880 — 2,600
90 — 1,309	90 — 11,499
1900— 1,775	1900 — 15,157
10 — 4,507	10 — 32,127
20 — 4,558	20 — 36,840
30 — 4,907	30 — 40,034
40 — 4,857	40 — 41,393
50 — 5,639	50 — 43,755
60 — 5,199	60 — 41,467
70 — 5,727	70 — 45,467
80 — 6,100	80 — 50,025

RECENT TRENDS

Since 1940, Chehalis has gone through many changes but has retained a stable population level. Surrounding agriculture uses have decreased with most poultry raising businesses disappearing, dairy farming decreasing, and fruit and berry farms declining. At the same time, logging and lumber production has been decreasing. These economically declining areas have been offset some by new or expanded manufacturing (glass plant, manufactured homes) and a regional coal fired electrical generating plant.

At the same time, the Chehalis and Lewis County area has had major changes occur in their transportation systems. An airport was built in Chehalis, but there is no scheduled passenger service. A new freeway was built about a mile west of the original central business district, and the train station was closed.

In addition to these changes, a new retail shopping area was built in the 60's between Centralia and Chehalis. Since the population within Lewis County has not increased significantly, the new retail area has drawn stores, business and customers out of downtown Chehalis, leaving a weakened central business district.

In an effort to address these changes, the City has taken several steps. The downtown problems were studied in 1960 and, in 1972, a downtown improvement plan was completed by the City Planning staff. On a broader scale, a City-wide comprehensive plan was developed in 1969 and was rewritten in 1979. In addition, the City started a community development program in 1979 to assist in the conservation of older residential neighborhoods. Through this program and

with funds from the Federal Community Development Block Grant Program, the City has been able to provide low interest housing rehabilitation loans for housing occupied by people with lower incomes, improve storm drainage in the Central neighborhood, and correct some of the problems in the aging sanitary sewer system. The City also participates in a County-wide economic development program.

THE SURVEY AND INVENTORY

METHODOLOGY

The historic survey included all properties fifty years old or older within the City of Chehalis. These properties were identified through the County Assessor's property records. Additional historic information was gathered by reviewing the files and information in the Lewis County Museum, the local history section in the City Library, and a previous partial inventory which was completed in 1979. The previous inventory included 25 potentially historic properties.

The publications which were most helpful in providing information on the history of Chehalis were a 1915 publication by the Chehalis BEE-NUGGET and a 1952 publication by the Chehalis Chamber of Commerce. The BEE-NUGGET publication provides a detailed history and a description of the early City leaders. The Chamber publication provides an overview of the early history and description of the changes through 1952. Useful information was also obtained from early City Directories and a 1924 Sanborn insurance map.

A field survey was completed on all properties (1498) which were identified as 50 years old or older. The Historic Commission with the assistance of the project staff reviewed each building which had been surveyed and identified 224 properties as potentially significant. Additional research was completed on the selected 224 properties to identify significant events, people, and changes which were related to the building.

The survey team consisted of George Hauer, who completed field surveys and photography; Linda Webb and Jennifer Dawson, who completed research on general local history and on the buildings identified as potentially significant; Dale Miller from The Phoenix Group, who provided project organization, techni-

cal assistance and report preparation; and Ray Muyskens, who was the project supervisor.

The Chehalis Historic Commission reviewed all surveyed proper ties and assisted in identifying those properties which are potentially significant. The Commission members are Mike Austin, Brian Baker, Jim Fechtner, Robert Hubenthal, Jill Kangas, James Nale, and Selma Schwartz.

FINDINGS

In completing the survey, the team found that many of the potentially historic buildings were in one of three districts: downtown, Pennsylvania Avenue, and Hillside. One theme type of housing (Millworkers housing) was found in two specific locations (Prindle Street and Washington / Adams Avenue). The remaining potentially historic buildings were spread throughout the City.

The residential structures vary from basic Millworker housing on Prindle Street to large, neo-colonial estate type homes within several blocks on Pennsylvania Avenue. The more extravagant and larger homes were generally located in the Pennsylvania Avenue area or on the Hillside district. Smaller family houses in mission, bungalow, craftsman and vernacular style are interspersed throughout the City except in the downtown commercial area. Most of the residential building designs were brought to Chehalis and reflect housing types which were popular throughout the United States in the period from 1890 through the 1920s. These styles included craftsman, mission, bungalow, Queen Anne, Italianate, colonial, revival, and vernacular.

There does not appear to have been a particular architect or group of architects designing the Chehalis homes. Most of these homes appear to have been built by skilled craftsmen contractors using designs from standard available plan books.

The commercial area in downtown Chehalis was planned and developed by an optimistic group of early community leaders. The developers of downtown Chehalis formed a Community Development Corporation and carefully coordinated the layout, design and development of downtown. The development group had buildings designed and developed for the corners of each block to set the style and preferred uses in the block. Many of the original buildings were one to three story wood buildings, and most of these buildings were destroyed in a fire that swept through the commercial area in 1892. Downtown was reconstructed using brick and concrete to reduce the potential for a repeat district-wide destruction by fire. However, many of the brick buildings were damaged by the earthquake in 1949. The earthquake damage led to many buildings "modernization" projects which resulted in the removal of the external historic characteristics of some of the commercial buildings (Washington Hotel, City Hall, etc.).

Handwritten note: "Chehalis Commercial District was 1893" with a line pointing to the text above. Another handwritten note: "Chehalis Commercial District was 1893" with a line pointing to the text above.

RECOMMENDATIONS

The next steps in developing an effective historic conservation program and the recommendations from the survey project are:

- 1. Complete the establishment of a local historic register for properties and districts. The Historic Commission will need to review each inventoried property and potential district at advertised public meetings. After receiving comments and additional information from the public in the inventoried buildings and potential districts, the Commission will need to select properties and established districts for inclusion on the local register. The process of community review and the decision on the local register will take approximately six months (January through June, 1988) to complete.*
- 2. After the local register has been established, prepare and provide certificates or exterior building plaques to each owner of property included on the register.*
- 3. Prepare a map of historic places and a booklet describing selected registered properties.*
- 4. Find the necessary resources to assist the Lewis County Historical Museum in inventorying and cataloguing all of the historic information which is already at the Museum. There is a large amount of historic information and material, which would be more useful if fully catalogued and indexed.*

NOTES

1. "Memoirs of William West" as quoted in the *Chehalis BEE-NUGGET*,
HISTORICAL SOUVENIR EDITION, May 13, 1915
2. *Ibid*
3. *Ibid*
4. *Chehalis BEE-NUGGET*, April 4, 1912

APPENDICES



APPENDIX I

HISTORIC INVENTORY MASTER LIST BY GEOGRAPHIC AREA

WEST SIDE AREA

<i>Map Location #</i>	<i>Site #</i>	<i>Address</i>	<i>Historic Name/Date Built</i>
1	21-1445	3110 Airport Road	
2	21-1462	1358 River Road	
3	21-1482	353 Riverside Drive	
4	21-1473	515 Newaukum Avenue	
5	21-216	1132 State Street	
6	21-274	978 NW Pennsylvania	
7	21-238 / 239	920 State Street	
8	21-269	860 NW Pennsylvania	
9	21-241	887 State Street	
10	21-308	732 NW New York Avenue	
11	21-236A	733 State Street	
12	21-332	624 NW Maryland Avenue	
13	21-258	873 NW Folsom Avenue	
14	21-259	817 NW Folsom Avenue	
15	21-364	688 NW Pennsylvania	
16	21-262	651 NW Folsom Avenue	
17	21-465	679 State Street	

Map Location #	Site #	Address	Historic Name/Date Built
18	21-365	673 NW Pennsylvania	Palmer House, 1900
19	21-363	670 NW Pennsylvania	
20	21-366	649 NW Pennsylvania	1879
21	21-371	683 NW Quincy Street	
22	21-370	663 NW Quincy Street	
23	21-367	621 NW Quincy Place	John Loughran Home, 1920
24	21-462	623 State Street	Kaija's Feeds
25	21-355	761 NW West Street	Pauli Home, 1920
26	21-426	584 NW Pennsylvania	John Denhof Home, 1916
27	21-404	565 NW Pennsylvania	A.L. Coffman Home, 1906
28	21-425	554 NW Pennsylvania	
29	21-424	540 NW Pennsylvania	
30	21-405	525 NW Pennsylvania	Wm. Urquhart Home, 1920
31	21-431	684 NW Gertrude	1924
32	21-430	519 NW Quincy Place	1880
33	21-455	561 NW Rhode Island	Elgin Hotel, ca. 1900
34	21-406	495 NW Pennsylvania	Millet Home, ca. 1901
35	21-432	687 NW Gertrude	1925
36	21-407	461 NW Pennsylvania	E.A. Frost Home, ca. 1900
37	21-423	462 NW Pennsylvania	

Map Location #	Site #	Address	Historic Name/Date Built
38	21-422	440 NW Pennsylvania	
39	21-433	471 NW Quincy Street	
40	21-384	691 NW St. Helens Ave.	
41	21-421	682 NW St. Helens Ave.	Judge Rice Home, ca. 1900
42	21-409	675 NW St. Helens Ave.	N.B. Coffman Home, ca. 1900
43	21-420	666 NW St. Helens Ave.	Miles Home, ca. 1900
44	21-410	647 NW St. Helens Ave.	Coffman Home, ca. 1900
45	21-417	604 NW St. Helens Ave.	
46	21-413	565 NW St. Helens Ave.	
47	21-485	1090 NW Prindle Street	
48	21-482	1010 NW Prindle Street	
49	21-481	998 NW Prindle Street	
50	21-480	976 NW Prindle Street	
51	21-479	962 NW Prindle Street	
52	21-478	948 NW Prindle Street	
53	21-476	922 NW Prindle Street	
54	21-474	898 NW Prindle Street	
55	21-473	858 NW Prindle Street	

NORTHEAST HILLSIDE AREA

Map Location #	Site #	Address	Historic Name/Date Built
56	21-147	644 NW Franklin	
57	21-203	280 NE Cascade Ave.	Burnett Mansion, ca. 1900
58	21-202	555 NE Jefferson	Dieckman House, 1899
59	21-166	550 NE Adams Avenue	1885
60	21-164	540 NE Adams Avenue	Urquhart Home, ca. 1900
61	21-165	535 NW Adams Avenue	
62	21-168	502 NE Adams Avenue	Ribelin Home, 1927
63	21-170	479 NE Adams Avenue	Parrish Home, 1905-06
64	21-172	472 NE Adams Avenue	St. John Home, 1895
65	21-175	444 NE Adams	
66	21-144	135 NW Division St.	
67	21-89	472 NE Washington Ave.	Rush Home, ca. 1895
68	21-181	116 NE School Street	1900
69	21-183	138 NE School Street	
70	21-86	438 NE Washington Ave.	Dr. Dow's House, ca. 1904
71	21-184	379 NE Adams	
72	21-182	367 NE Adams	
73	21-200	171 NE Terrace Avenue	1928

Map Location #	Site #	Address	Historic Name/Date Built
74	21-206	279 NE Hillside Drive	1924
75	21-187	241 NE Terrace Avenue	
76	21-189	272 NE Terrace Avenue	1920
77	21-188	261 NE Terrace Avenue	
78	21-85	412 NE Washington Ave.	
79	21-11	89 NE Park Street	1915
80	21-97	365 NE Washington Ave.	ca. 1930
81	21-82	336 NE Washington Ave.	
82	21-81	322 NE Washington Ave.	
83	21-80	306 NE Washington Ave.	
84	21-79	292 NE Washington Ave.	
85	21-77	200 NE Washington Ave.	ca. 1920
86	21-75	126 NE Washington Ave.	1920
87	21-04	82 NE North Street	Stickland House, 1912
88	21-105	75 NE Washington Ave.	1936
89	21-73	78 NE Washington Ave.	ca. 1930
90	21-1213	278 SE Adams	Scout Lodge, 1935
91	21-1158	684 SE Adams Avenue	
92	21-1120	1024 SE Adams	
93	21-1118	1046 SE Adams Avenue	

**Map
Location**

Map Location #	Site #	Address	Historic Name/Date Built
94	21-1230	117 SE Washington Ave.	
95	21-1220	170 SE Washington Ave.	
96	21-1222	254 NE Washington Ave.	ca. 1900
97	21-1224	267 SE Washington Ave.	Kaufman Apartments, 1924
98	21-1171	622 SE Washington	
99	21-1186	672 SE Washington Ave.	
100	21-1176	742 SE Washington Ave.	
101	21-07	262 N. Market Blvd.	ca. 1900
102	21-1232	16 S. Market Blvd.	Methodist Church
103	21-1207	748 S. Market Blvd.	Wibra & Cloud Greenhouses, 1935

DOWNTOWN/INDUSTRIAL AREA

Map Location #	Site #	Address	Historic Name/Date Built
104	21-1488	1581 N. National Ave.	Chehalis Brick & Tile Co., 1902
105	21-349	591 N. National Ave.	J.P. Callison & Sons Co., 1900
106	21-353	604 NW West Street	
107	21-352	550 NW West Street	
108	21-464/466	391 State Street	Brewery
109	21-467	323 State Street	
110	21-468	305 State Street	West Side Grocery, 1915
111	21-470	642 NW Prindle St.	
112	21-469	620 NW Prindle St.	
113	21-495	624 NW Center Street	Kennicott Hospital
114	21-497	576 W. Main Street	
115	21-106	49 NE Division	
116	21-30	566 N. Market Blvd.	1910
117	21-29	556 N. Market Blvd.	Chehalis Theater, 1920
118	21-24	534 N. Market Blvd.	1904
119	21-23	516 N. Market Blvd.	Hartman & Nathan Building, 1906
120	21-22	500 N. Market Blvd.	Coffman Building / Citizen's Club, ca. 1900
121	21-34	555 N. Market Blvd.	1905

**Map
Location**

Map Location #	Site #	Address	Historic Name/Date Built
122	21-35	551 N. Market Blvd.	
123	21-36	545 N. Market Blvd.	Washington Hotel, ca. 1900
124	21-37	539 N. Market Blvd.	
125	21-38	535 N. Market Blvd.	
126	21-20	531 N. Market Blvd.	
127	21-41	521-523 N. Market Blvd.	The Smoke Shop, 1918
128	21-42	515 N. Market Blvd.	Commercial Block, ca. 1900
129	21-40	505 N. Market Blvd.	
130	21-21	486 N. Market Blvd.	1890
131	21-18	470 N. Market Blvd.	1919
132	21-17	460-466 N. Market Blvd.	1919
133	21-16	456 N. Market Blvd.	St. Helens Theater, 1910
134	21-15	400-408 N. Market Blvd.	St. Helens Inn, 1917-21 (site 1800's)
135	21-43	473 N. Market Blvd.	Coffman-Dobson Bank (site 1884)
136	21-44	465 N. Market Blvd.	Moore's Men's Store, 1927
137	21-45	463 N. Market Blvd.	Elks Club Building, 1921
138	21-46	437 N. Market Blvd.	
139	21-47	433 N. Market Blvd.	Judd Building, 1920
140	21-14	75 NE Cascade Ave.	San Juan Arms, ca. 1920
141	21-13	80 NE Cascade Ave.	City Hall

Map Location #	Site #	Address	Historic Name/Date Built
142	21-12	76 NE Park	Public Library
143	21-10	349 N. Market Blvd.	Westminster Pres. Church, ca. 1900
144	21-09	299 N. Market Blvd.	Brown Mortuary, 1923
145	21-01	55 N. Market Blvd.	ca. 1900
146	21-351	589 NW Front Street	Northern Pacific Depot, 1912
147	21-51	547 NW Pacific Ave.	Sears Building, ca. 1900
148	21-50	517 NW Pacific Ave.	
149	21-54	307 NW Park Street	
150	21-108	465 NW Chehalis Ave.	1920
151	21-56	473 NW Park Street	
152	21-111	369 NW Chehalis Ave.	Grand Opera House, ca. 1900
153	21-125	372 NW Chehalis Ave.	
154	21-112	365 NW Chehalis Ave.	ca. 1900
155	21-124	318 NW Chehalis Ave.	
156	21-113	300 NW Chehalis Ave.	1920
157	21-57	342 NW Pacific Ave.	
158	21-114	269 NW Chehalis Ave.	Saindon / Garbe Building, 1907
159	21-68/123	280 NW Chehalis Ave.	
160	21-115	243 NW Chehalis Ave.	
161	21-122	242 NW Chehalis Ave.	Royal Bakery, 1902

**Map
Location**

#	Site #	Address	Historic Name/Date Built
162	21-116	223 NW Chehalis Ave.	Cohn & Mintzer Building, 1914
163	21-66	133 NW Prindle St.	
164	21-65	111 NW Prindle St.	Christian Church, ca. 1900
165	21-64	101 NW Prindle St.	
166	21-130	225 NW Cascade Ave	U.S. Post Office, 1933
167	21-121	184 NW Chehalis Ave.	ca. 1921
168	21-129	130 NW Cascade Ave.	
169	21-128	142 NW Cascade Ave.	Pentacostal Church, ca. 1935
170	21-119	381 NW North Street	Lewis County Courthouse, 1927
171	21-137	423 W. Main Street	
172	21-140	123 W. Main Street	Masonic Temple, 1932
173	21-141	111 W. Main Street	
174	21-525	46 SW Chehalis Ave.	
175	21-500/523	67 SW Chehalis Ave.	Darigold
176	21-548/549	78 SW Chehalis Ave.	
177	21-596	99&100 SW Chehalis Ave.	Rainier Cross Arms Co.

CENTRAL AREA

Map Location #	Site #	Address	Historic Name/Date Built
178	21-505	287 SW Alfred	
179	21-501	19 SW Cascade Ave.	
180	21-701	18 SW Cascade Ave.	
181	21-531	256 SW Lewis Street	
182	21-535	214 SW Lewis Street	
183	21-536	59 SW Cascade Ave.	
184	21-539	240 SW James Street	
185	21-538	228 SW James Street	
186	21-613	233 S. Market Blvd.	R.E. Bennett School, 1928
187	21-609	51 SW 3rd	
188	21-603	135 SW 3rd	
189	21-601	261 SW 3rd	
190	21-1067	382 SW Cascade Ave.	
191	21-1068	420 SW Cascade Ave.	
192	21-707	475 SW Chehalis Ave.	McFadden House, 1859
193	21-894	463 S. Market Blvd.	
194	21-899	58 SW 5th	
195	21-768	324 SW 5th	

**Map
Location**

Historic Name/Date Built

St. Joseph's School, 1922

Address

Site #

123 SW 6th

21-931

621 SW Cascade Ave.

21-824

682 SW Cascade Ave.

21-1075

677 SW Cascade Ave.

21-828

699 SW Cascade Ave.

21-829

635 SW Chehalis Ave.

21-714

811 S. Market Blvd.

21-963

780 SW William

21-794

917 SW Cascade Ave.

21-841

279 SW 9th

21-839

961 S. Market Blvd.

21-989

71 SW 10th

21-1006

1079 S. Market Blvd.

21-1012

48 SW 11th

21-1014

1121 SW Cascade Ave.

21-849

1249 S. Market Blvd.

21-1054

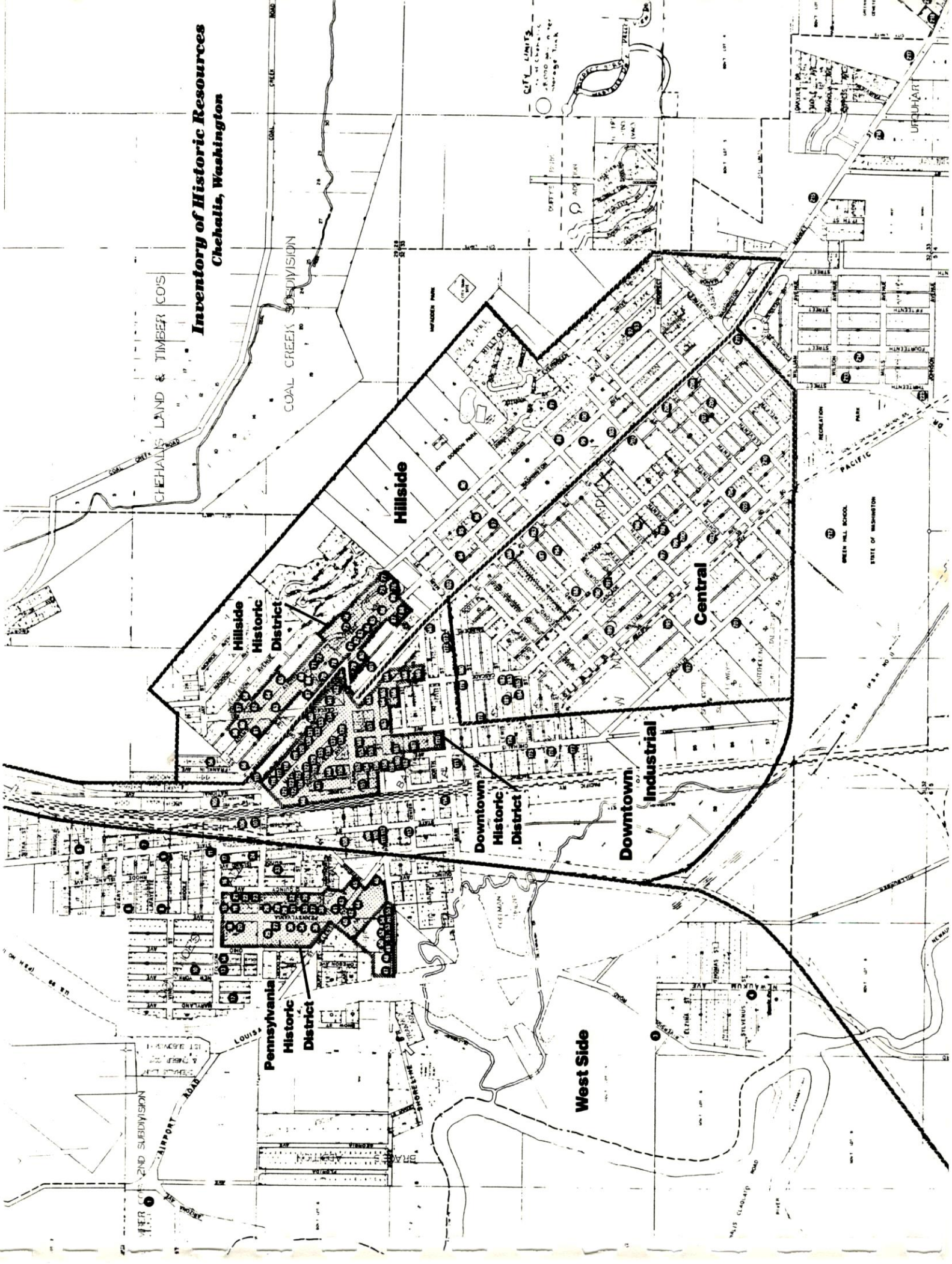
The Creamery, 1914

ALPHA JASTYVIED

HISTORIC PROPERTIES NOT SHOWN IN ANY OF THE ABOVE AREAS

Map Location #	Site #	Address	Historic Name/Date Built
212	21-1489	375 SW 11th	Green Hill School, 1891 Site
213	21-1254	324 SW 13th	
214	21-1271	453 SW 14th	
215	21-1246	1676 S. Market Blvd.	
216	21-1242	1879 S. Market Blvd.	
217	21-1238	1970 S. Market Blvd.	
218	21-1437	2022 S. Market Blvd.	
219	21-1439	34 SE Spring Street	
220	21-1340	1725 SW Snively Ave.	
221	21-1339	1767 SW Snively Rd.	
222	21-1426	2141 Jackson Highway	
223	21-1408	2325 Jackson Highway	
224	21-1410	2228 Jackson Highway	
225	(none)	13th & Johnson	Steam Locomotive #15, 1916

Inventory of Historic Resources Chehalis, Washington



APPENDIX II

INVENTORIED PROPERTIES BY THEME

AGRICULTURE

Site #	Address	Historic Name/Date Built
21-839	279 SW 9th	The Creamery, 1914
21-1489	375 SW 11th	Green Hill School, 1891 Site
21-1445	3110 Airport Road	
21-500/523	67 SW Chehalis Avenue	Darigold
21-1207	748 S. Market Blvd.	Wibra & Cloud Greenhouses, 1935
21-349	591 N. National Avenue	J.P. Callison & Sons Co., 1900
21-462	623 State Street	Kaija's Feeds

ARCHITECTURE

Site #	Address	Historic Name/Date Built
21-406	495 NW Pennsylvania	Millet Home, ca. 1901
21-425	554 NW Pennsylvania	
21-404	565 NW Pennsylvania	A.L. Coffman Home, 1906
21-426	584 NW Pennsylvania	John Denhof Home, 1916
21-164	540 NE Adams Avenue	Urquhart Home, ca. 1900
21-202	555 NE Jefferson	Dieckman House, 1899
21-86	438 NE Washington Ave.	Dr. Dow's House, ca. 1904
21-15	403-408 N. Market Blvd.	St. Helens Inn, 1917-21 (site 1800's)

.....

Historic Name/Date Built

Site #	Address	Historic Name/Date Built
21-899	58 SW 5th	
21-768	324 SW 5th	
21-1120	1024 SE Adams	
21-505	287 SW Alfred	
21-1067	382 SW Cascade Avenue	
21-262	651 NW Folsom <i>A.B. Casch</i>	
21-535	214 SW Lewis Street	
21-1232	16 S. Market Blvd.	Methodist Church
21-1242	1879 S. Market Blvd.	
21-308	732 NW New York Avenue	
21-1220	170 SE Washington Ave.	
21-1224	267 SE Washington Ave.	Kaufman Apartments, 1924

COMMERCE

Site #	Address	Historic Name/Date Built
21-455	561 NW Rhode Island	Elgin Hotel, ca. 1900
21-409	675 NW St. Helens Ave.	N.B. Coffman Home, ca. 1900
21-172	472 NE Adams Avenue	St. John Home, 1895
21-168	502 NE Adams Avenue	Ribelin Home, 1927
21-116	223 NW Chehalis Avenue	Cohn & Minter Building, 1914
21-122	242 NW Chehalis Avenue	Royal Bakery, 1902

Site #	Address	Historic Name/Date Built
21-114	269 NW Chehalis Avenue	Saindon / Garbe Building, 1907
21-112	365 NW Chehalis Avenue	ca. 1900
21-111	369 NW Chehalis Avenue	Grand Opera House, ca. 1900 <i>Brunswick</i>
21-351	589 NW Front Street	Northern Pacific Depot, 1912, 1978 <i>McC Museum</i>
21-01	55 N. Market Blvd.	ca. 1900
21-44	465 N. Market Blvd.	Moore's Men's Store, 1927
21-43	473 N. Market Blvd.	Coffman-Dobson Bank (site 1884)
21-21	486 N. Market Blvd.	ca. 1920
21-22	500 N. Market Blvd.	Coffman Bldg / Citizen's Club, ca. 1900
21-42	515 N. Market Blvd.	Commercial Block, ca. 1900
21-23	516 N. Market Blvd.	Hartman & Nathan Building, 1906
21-41	521-523 N. Market Blvd.	The Smoke Shop, 1918
21-24	534 N. Market Blvd.	1904
21-34	555 N. Market Blvd.	1905
21-51	547 NW Pacific Ave.	Sears Building, ca. 1900
21-500/523	67 SW Chehalis Avenue	Darigold
21-596	99 & 100 SW Chehalis Ave.	Rainier Cross Arms Co.
21-1207	748 S. Market Blvd.	Wibra & Cloud Greenhouses, 1935
21-349	591 N. National Avenue	<i>L. J.P.</i> Callison & Sons Co., 1900
21-1488	1581 N. National Avenue	Chehalis Brick & Tile Co., 1902
21-468	305 State Street	West Side Grocery, 1915

- 21-464 391 State Street Brewery
- 21-462 623 State Street Kaija's Feeds

COMMUNITY DEVELOPMENT

Site #	Address	Historic Name/Date Built
21-431	684 NW Gertrude	1924
21-432	687 NW Gertrude	1925
21-407	461 NW Pennsylvania	E.A. Frost Home, ca. 1900
21-405	525 NW Pennsylvania	Wm. Urquhart Home, 1920
21-425	554 NW Pennsylvania	
21-404	565 NW Pennsylvania	A.L. Coffman Home, 1906
21-426	584 NW Pennsylvania	John Denhof Home, 1916
21-365	673 NW Pennsylvania	Palmer House, 1900
21-430	519 NW Quincy Place	1880
21-367	621 NW Quincy Place	John Loughran Home, 1920
21-455	561 NW Rhode Island	Elgin Hotel, ca. 1900
21-410	647 NW St. Helens Ave.	Coffman Home, ca. 1900 ✓ Thomas Suffman
21-420	666 NW St. Helens Ave.	Miles Home, ca. 1900
21-409	675 NW St. Helens Ave.	N.B. Coffman Home, ca. 1900
21-421	682 NW St. Helens Ave.	Judge Rice Home, ca. 1900
21-172	472 NE Adams Avenue	St. John Home, 1895
21-170	479 NE Adams Avenue	Parrish Home, 1905-06

Richard Beckman

Thomas Suffman

Site #	Address	Historic Name/Date Built
21-168	502 NE Adams Avenue	Ribelin Home, 1927
21-164	540 NE Adams Avenue	Urquhart Home, ca. 1900
21-166	550 NE Adams Avenue	1885
21-203	280 NE Cascade Avenue	Burnett Mansion, ca. 1900
21-206	279 NE Hillside Drive	1924
21-202	555 NE Jefferson	Dieckman House, 1899
21-43	473 N. Market Blvd.	Coffman-Dobson Bank (site 1884)
201-04	82 NE North Street	Stickland House, 1912
21-181	116 NE School Street	1900
21-200	171 NE Terrace	1928
21-189	272 NE Terrace	1920
21-105	75 NE Washington Ave.	1936
21-73	78 NE Washington Ave.	ca. 1930 <i>Copy?</i>
21-75	126 NE Washington Ave.	1920
21-77	200 NE Washington Ave.	ca. 1920
21-1222	254 NE Washington Ave.	ca. 1900
21-82	336 NE Washington Ave.	ca. 1930
21-97	365 NE Washington Ave.	1915
21-85	412 NE Washington Ave.	
21-89	472 NE Washington Ave.	Rush Home, ca. 1895
21-14	75 NE Cascade Avenue	San Juan Arms, ca. 1920

picture in P. file museum

Site #	Address	Historic Name/Date Built
21-128	142 NW Cascade Avenue	Pentacostal Church, ca. 1935
21-130	225 NW Cascade Avenue	U.S. Post Office, 1933
21-121	184 NW Chehalis Avenue	ca. 1921
21-116	223 NW Chehalis Avenue	Cohn & Minter Building, 1914
21-114	269 NW Chehalis Avenue	Saindon / Garbe Building, 1907
21-113	300 NW Chehalis Avenue	1920
21-112	365 NW Chehalis Avenue	ca. 1900
21-111	369 NW Chehalis Avenue	Grand Opera House, ca. 1900
21-108	465 NW Chehalis Avenue	1920
21-351	589 NW Front Street	Northern Pacific Depot, 1912
21-141	111 W. Main Street	
21-10	349 N. Market Blvd.	Brunswick Bldg - Under Opera museum investigated file
21-15	400-408 N. Market Blvd.	Westminster Pres. Church, ca. 1900
21-47	433 N. Market Blvd.	St. Helens Inn, 1917-21 (site 1800's)
21-16	456 N. Market Blvd.	Judd Building, 1920
21-45	463 N. Market Blvd.	St. Helens Theater, 1910
21-17	460-466 N. Market Blvd.	Elks Club Building, 1921
21-44	465 N. Market Blvd.	1919
21-18	470 N. Market Blvd.	Moore's Men's Store, 1927
21-21	486 N. Market Blvd.	1919
21-22	500 N. Market Blvd.	1890
		Coffman Bldg / Citizen's Club, ca. 1900

Mintzer

"Churches," Under Presbyt Church

Museum Uncat - file

Site #	Address	Historic Name/Date Built	Remarks	Map Ref.
21-42	515 N. Market Blvd.	Commercial Block, ca. 1900		400 W 21-42
21-23	516 N. Market Blvd.	Hartman & Nathan Building, 1906		400 W 21-23
21-41	521-523 N. Market Blvd.	The Smoke Shop, 1918		400 W 21-41
21-24	534 N. Market Blvd.	1904		400 W 21-24
21-36	545 N. Market Blvd.	Washington Hotel, ca. 1900		400 W 21-36
21-34	555 N. Market Blvd.	1905		400 W 21-34
21-474	898 NW Prindle Street			400 W 21-474
21-476	922 NW Prindle Street			400 W 21-476
21-478	948 NW Prindle Street			400 W 21-478
21-479	962 NW Prindle Street			400 W 21-479
21-480	976 NW Prindle Street			400 W 21-480
21-481	998 NW Prindle Street		Mark Albert	400 W 21-481
21-482	1010 NW Prindle Street		Joseph B. Burt	400 W 21-482
21-485	1090 NW Prindle Street		Isabella Willard	400 W 21-485
21-79	292 NE Washington Ave.			400 W 21-79
21-80	306 NE Washington Ave.			400 W 21-80
21-81	322 NE Washington Ave.			400 W 21-81
21-182	367 NE Adams			400 W 21-182
21-184	379 NE Adams			400 W 21-184
21-609	51 SW 3rd			400 W 21-609
21-899	58 SW 5th			400 W 21-899

Site #	Address	Historic Name/Date Built
21-768	324 SW 5th	
21-931	123 SW 6th	St. Joseph's School, 1922
21-1213	278 SE Adams	Scout Lodge, 1935
21-175	444 NE Adams	
21-1120	1024 SE Adams	
21-505	287 SW Alfred	
21-1445	3110 Airport Road	
21-1067	382 SW Cascade Avenue	
21-1068	420 SW Cascade Avenue	
21-828	677 SW Cascade Avenue	
21-829	699 SW Cascade Avenue	
21-495	624 NW Center Street	Kennicott Hospital
21-525	46 SW Chehalis Avenue	
21-144	135 NW Division Street	
21-262	651 NW Folsom	
21-147	644 NW Franklin	
21-1410	2228 Jackson Highway	
21-535	214 SW Lewis Street	
21-989	961 S. Market Blvd.	
21-1242	1879 S. Market Blvd.	
21-308	732 NW New York Avenue	

Site #	Address	Historic Name/Date Built
21-473	858 NW Prindle Street	
21-1462	1358 River Road	
21-468	305 State Street	West Side Grocery, 1915
21-467	323 State Street	
21-464	391 State Street	Brewery
21-462	623 State Street	Kaija's Feeds
21-1339	1767 SW Snively Rd.	
21-1220	170 SE Washington Ave.	
21-1224	267 SE Washington Ave.	Kaufman Apartments, 1924
21-1186	672 SE Washington Ave.	
21-1176	742 SE Washington Ave.	

EDUCATION

Site #	Address	Historic Name/Date Built
21-931	123 SW 6th	St. Joseph's School, 1922
21-1489	375 SW 11th	Green Hill School, 1891 Site
21-1213	278 SE Adams	Scout Lodge, 1935
21-613	233 S. Market Blvd.	R.E. Bennett School, 1928

ENTERTAINMENT

Site #	Address	Historic Name/Date Built
21-111	369 NW Chehalis Avenue	Grand Opera House, ca. 1900
21-16	456 N. Market Blvd.	St. Helens Theater, 1910 ← was the theatre there that early? Thought it was built about 1907-
21-36	545 N. Market Blvd.	Washington Hotel, ca. 1900
21-29	556 N. Market Blvd.	Chehalis Theater, 1920

FRATERNAL

Site #	Address	Historic Name/Date Built
21-140	123 W. Main Street	Masonic Temple, 1932

GOVERNMENT

Site #	Address	Historic Name/Date Built
21-421	682 NW St. Helens Ave.	Judge Rice Home, ca. 1900
21-130	225 NW Cascade Avenue	U.S. Post Office, 1933
21-119	381 NE North	Lewis County Courthouse, 1927
21-1489	375 SW 11th	Green Hill School, 1891 Site
21-707	475 SW Chehalis Avenue	McFadden House, 1859

MANUFACTURING

Site #	Address	Historic Name/Date Built
21-596	99 & 100 SW Chehalis Ave.	Rainier Cross Arms Co.
21-1488	1581 N. National Avenue	Chehalis Brick & Tile Co., 1902

RELIGION

Site #	Address	Historic Name/Date Built
21-128	142 NW Cascade Avenue	Pentacostal Church, ca. 1935
21-141	111 W. Main Street	
21-10	349 N. Market Blvd.	Westminster Pres. Church, ca. 1900 - 1907/8
21-65	111 NW Prindle Street	Christian Church, ca. 1900
21-931	123 SW 6th	St. Joseph's School, 1922
21-1232	16 S. Market Blvd.	Methodist Church ca. 1908

SCIENCE

Site #	Address	Historic Name/Date Built
21-349	591 N. National Avenue	J. P. Callison & Sons Co., 1900

TRANSPORTATION

Site #	Address	Historic Name/Date Built
21-351	589 NW Front Street	Northern Pacific Depot, 1912

BIBLIOGRAPHY

CHEHALIS BEE-NUGGET

A FIELD GUIDE TO AMERICAN ARCHITECTURE; Rifkind, Carole; New American Library, 1983.

FIELD GUIDE TO AMERICAN HOUSES; McAlester, Virginia & Lee; Alfred A. Knopf, New York; 1984.

HONNE, THE SPIRIT OF THE CHEHALIS; Palmer, K.E.H.; Geneva, 1925.

"Report on Claims Of Chinook and Chehalis Indians"; 60th Congress; First Session; House Documents No. 517.

"Report on the Indian Tribes of the Territory of Washington"; Gibbs, G.; 33rd Congress; Second Session; House Documents No. 91, Volume 1, 1855.

WHAT STYLE IS IT?; Popeliers, John C.; Historic American Buildings Survey; National Trust for Historic Preservation,